

557000m E. 558000m E. 559000m E. 560000m E.

WGS84 Zone 10T 562000m E.

Oregon Section C - 74.4 miles
 Start - Hwy 140, mile 1773.4 (near Fish Lake)
 End - Hwy 138, mile 1847.8 (near Cascade crest)
 Elevation Gain +8,111'
 Elevation Loss -7,145'
 Elevation Change +966'

FishLakeTR - Fish Lake trail junction - mi 1773.2 - 4952 ft
Hwy140 - Highway 140 - mi 1773.4 - 4970 ft

FishLakeResort - - mi 1773.4 - ft
 Fish Lake Resort [fishlakeresort.net, 541-949-8500] is a hiker friendly resort 2 miles W of the PCT. The resort has a cafe, campground, cabins, laundry, showers, very small store and they accept resupply packages [\$.]

Ship UPS only [\$5 fee]:
 (Your Name)
 c/o Fish Lake Resort
 State HWY 140, Mile Marker 30
 Medford, OR 97501

CascadeCanal - Large creek-like Cascade Canal, wooden bridge. The Cascade Canal diverts water from Fourmile Lake to Medford growers. Usually reliable but occasionally shut off. - mi 1773.5 - 5001 ft

CS1774 - Small campsite - mi 1773.6 - 5031 ft

SummitTrail - Summit trail #3732 junction, stream nearby. - mi 1773.8 - 5094 ft

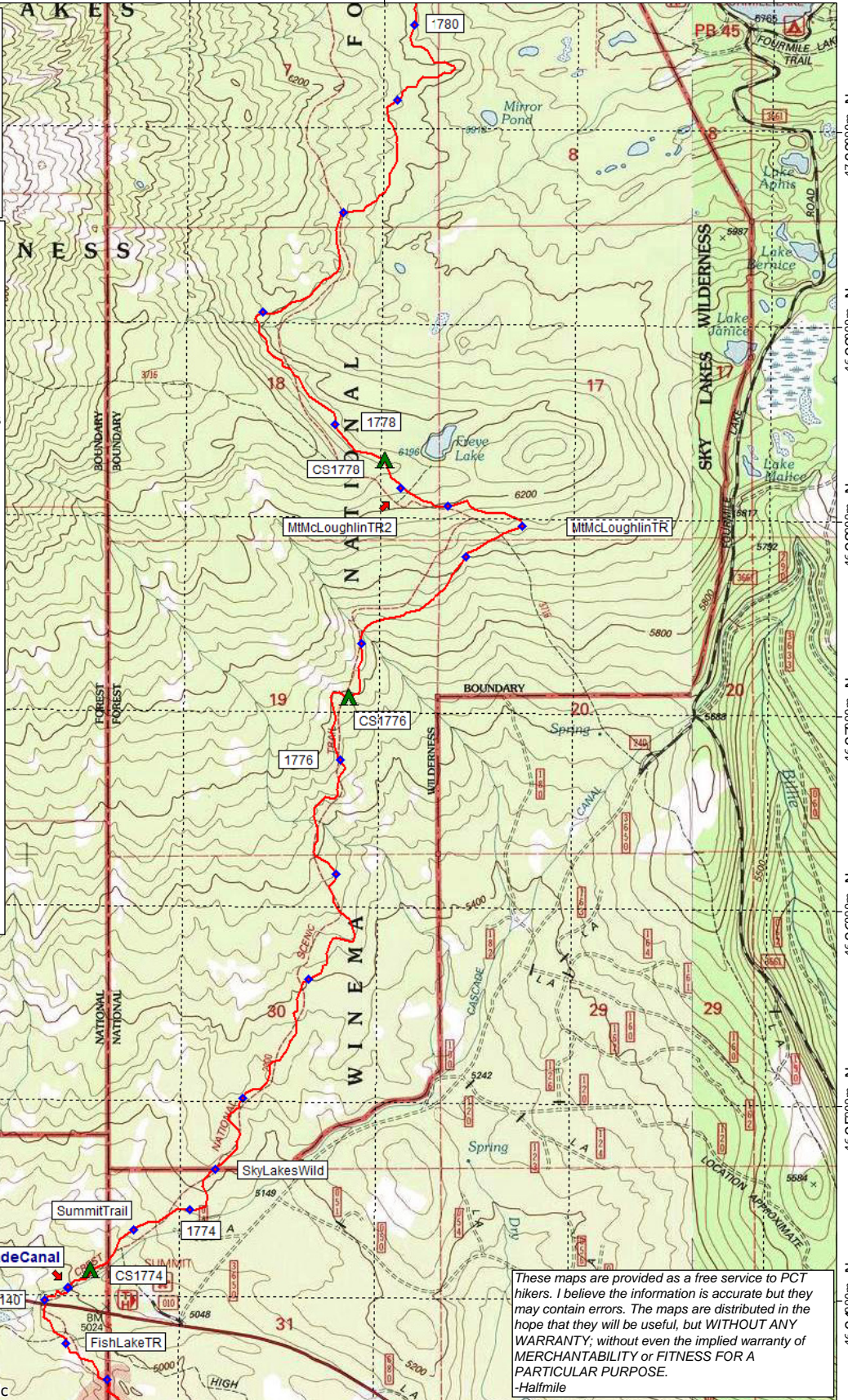
SkyLakesWild - Sky Lakes Wilderness boundary - mi 1774.2 - 5221 ft

CS1776 - Campsite - mi 1776.3 - 5779 ft

MtMcLoughlinTR - Mount McLoughlin Trailhead trail junction - mi 1777.2 - 6095 ft

MtMcLoughlinTR2 - Mount McLoughlin trail junction - mi 1777.7 - 6251 ft

CS1778 - Small campsite - mi 1777.8 - 6287 ft

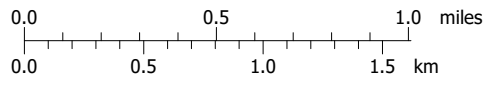


Map created with **TOPOM** ©2008 National Geographic

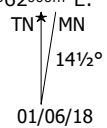
These maps are provided as a free service to PCT hikers. I believe the information is accurate but they may contain errors. The maps are distributed in the hope that they will be useful, but **WITHOUT ANY WARRANTY**; without even the implied warranty of **MERCHANTABILITY** or **FITNESS FOR A PARTICULAR PURPOSE**.
 -Halfmile



Support PCTA.org
 Leave No Trace



contour interval 40 feet
 1:31,680 1" = 1/2 mile
 Copyright 2018 Halfmile Media
 www.pctmap.net



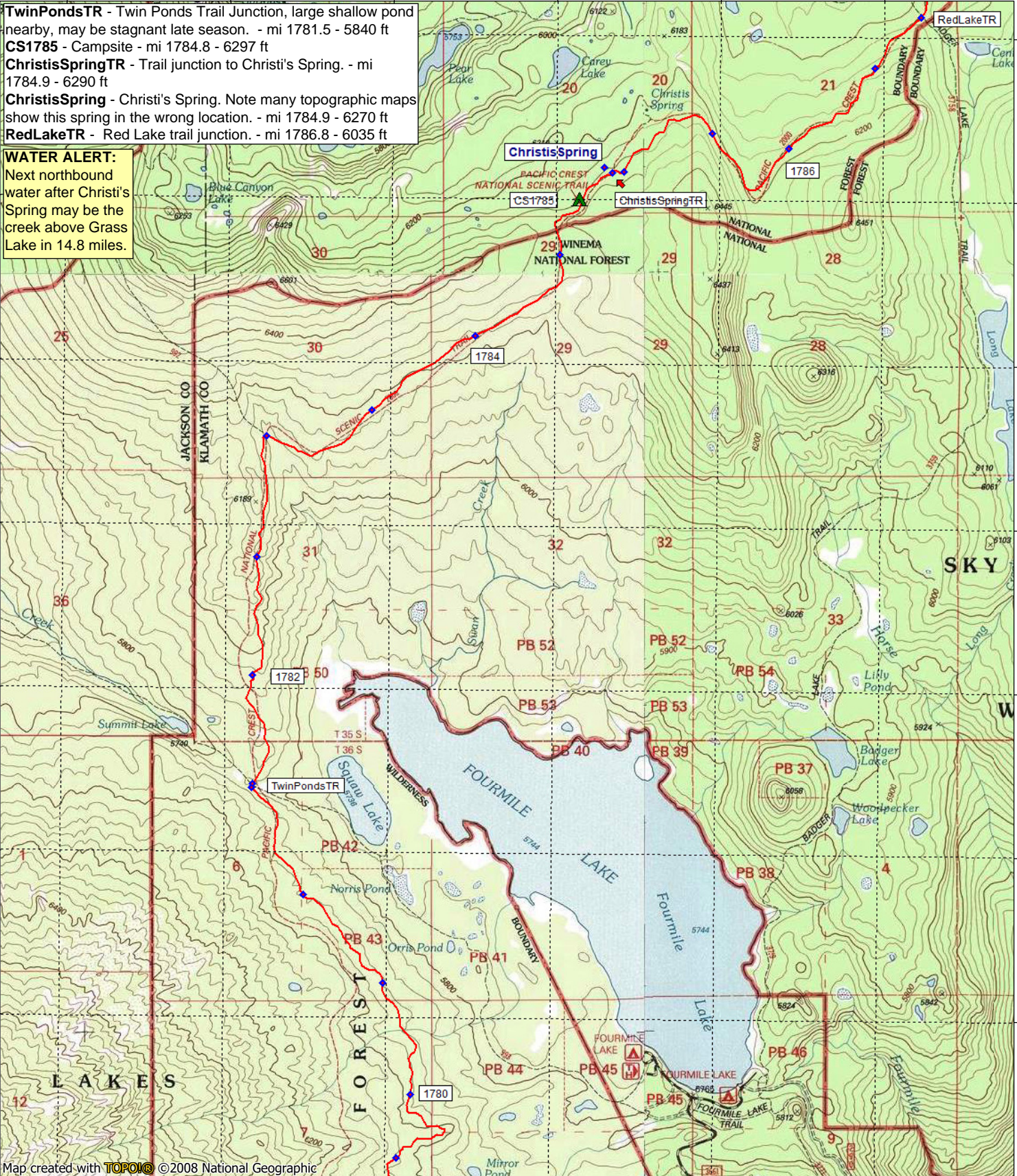
01/06/18

Oregon Section C - Page 2

558000m E. 559000m E. 560000m E. 561000m E. 562000m E. WGS84 Zone 10T 563000m E.

TwinPondsTR - Twin Ponds Trail Junction, large shallow pond nearby, may be stagnant late season. - mi 1781.5 - 5840 ft
CS1785 - Campsite - mi 1784.8 - 6297 ft
ChristisSpringTR - Trail junction to Christ's Spring. - mi 1784.9 - 6290 ft
ChristisSpring - Christ's Spring. Note many topographic maps show this spring in the wrong location. - mi 1784.9 - 6270 ft
RedLakeTR - Red Lake trail junction. - mi 1786.8 - 6035 ft

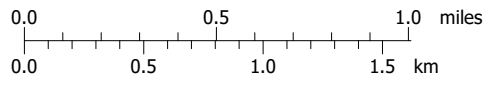
WATER ALERT:
 Next northbound water after Christ's Spring may be the creek above Grass Lake in 14.8 miles.



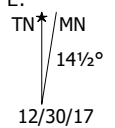
Map created with **TOPOIC** ©2008 National Geographic
 558000m E. 559000m E. 560000m E. 561000m E. 562000m E. WGS84 Zone 10T 563000m E.



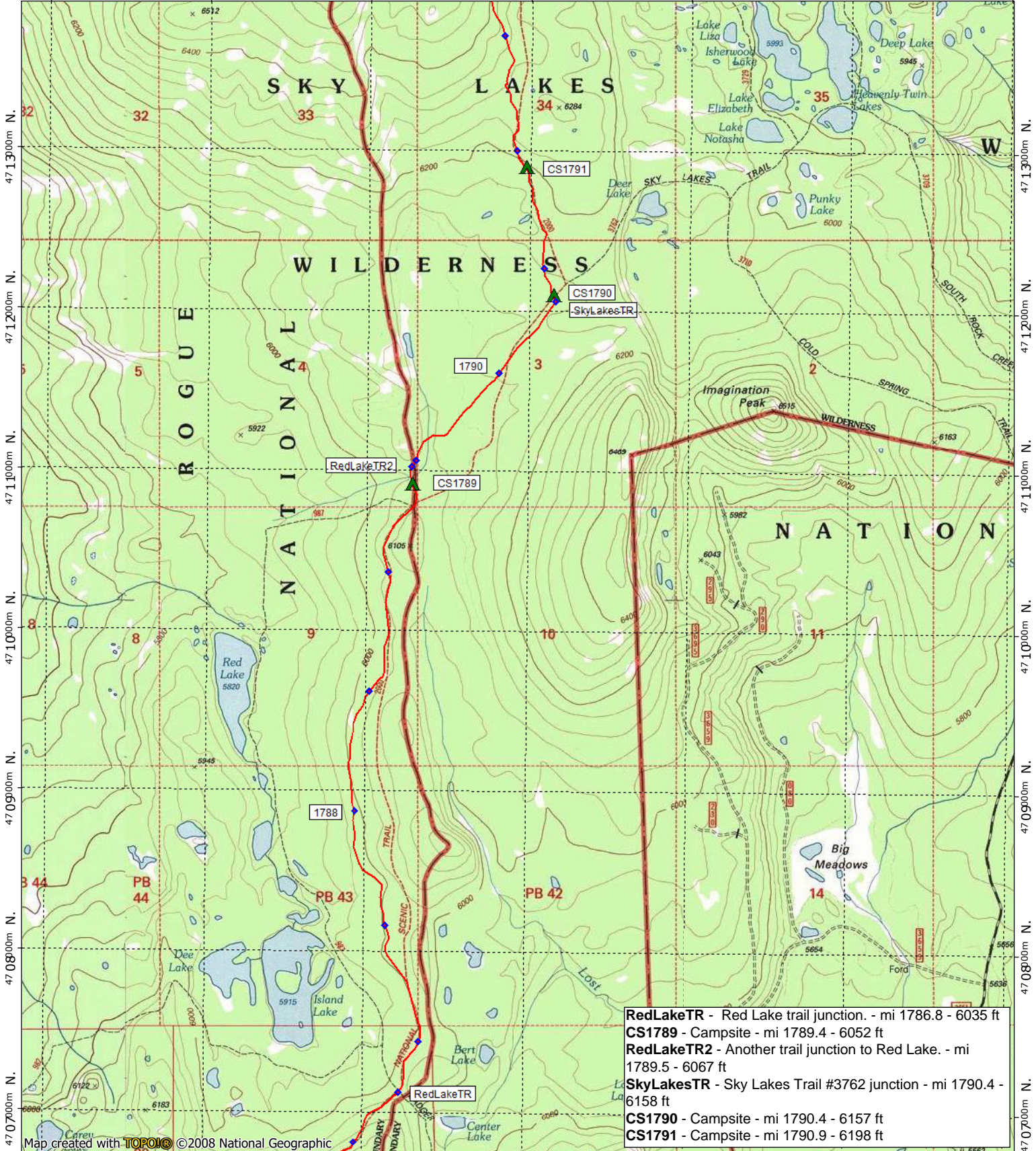
Support PCTA.org
 Leave No Trace



contour interval 20 meters & 40 feet
 1:31,680 1" = 1/2 mile
 Copyright 2018 Halfmile Media
 www.pctmap.net



561000m E. 562000m E. 563000m E. 564000m E. 565000m E. WGS84 Zone 10T 567000m E.



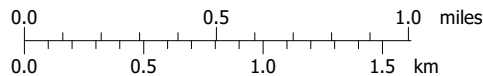
RedLakeTR - Red Lake trail junction. - mi 1786.8 - 6035 ft
CS1789 - Campsite - mi 1789.4 - 6052 ft
RedLakeTR2 - Another trail junction to Red Lake. - mi 1789.5 - 6067 ft
SkyLakesTR - Sky Lakes Trail #3762 junction - mi 1790.4 - 6158 ft
CS1790 - Campsite - mi 1790.4 - 6157 ft
CS1791 - Campsite - mi 1790.9 - 6198 ft

Map created with **TOPOIC** ©2008 National Geographic

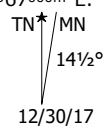
561000m E. 562000m E. 563000m E. 564000m E. 565000m E. WGS84 Zone 10T 567000m E.



Support PCTA.org
Leave No Trace

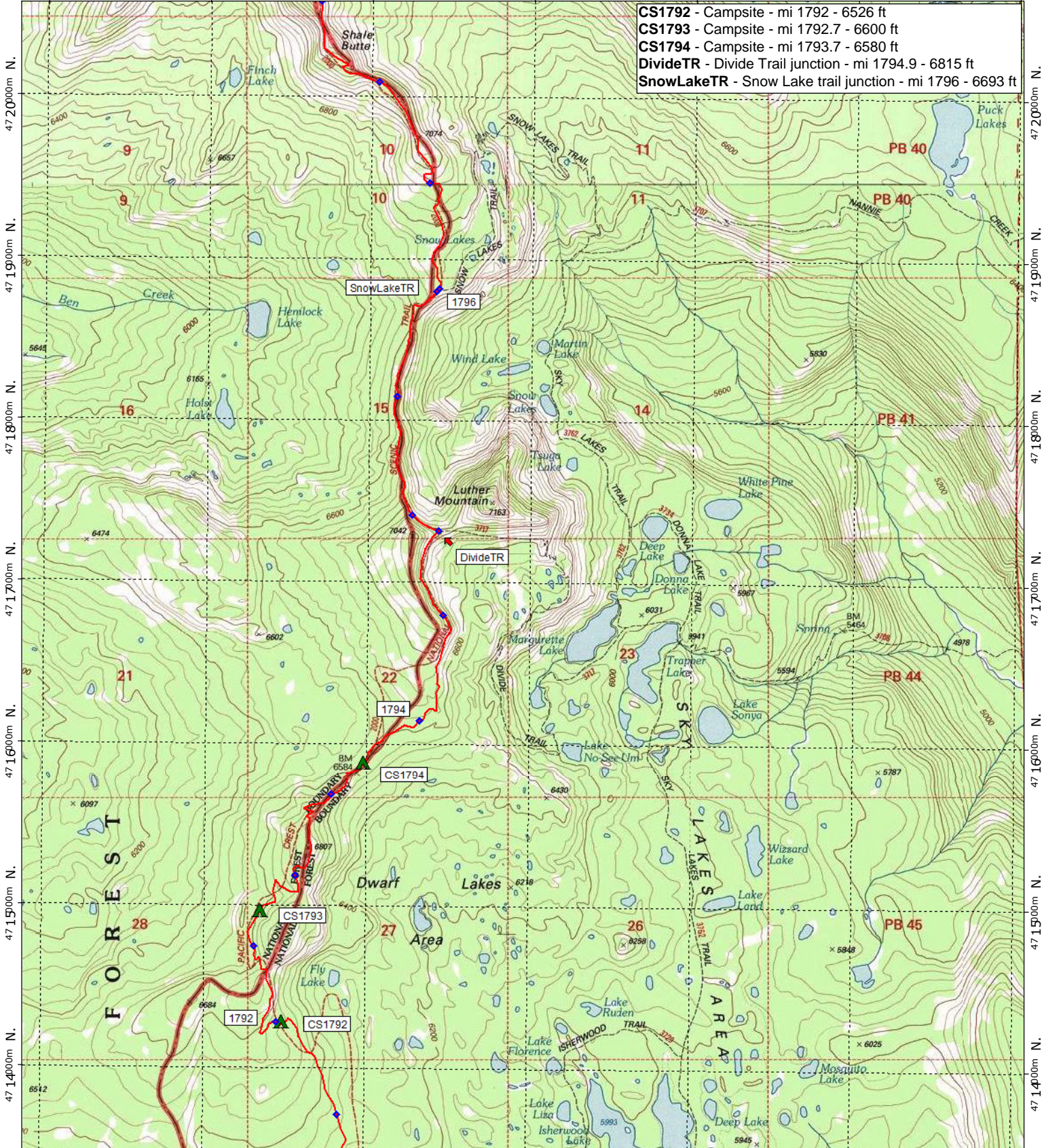


contour interval 40 feet
 1:31,680 1" = 1/2 mile
 Copyright 2018 Halfmile Media
 www.pctmap.net



Oregon Section C - Page 4

562000m E. 563000m E. 564000m E. 565000m E. 566000m E. WGS84 Zone 10T 568000m E.



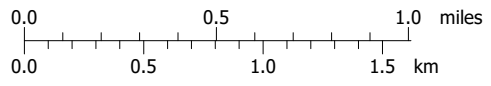
- CS1792 - Campsite - mi 1792 - 6526 ft
- CS1793 - Campsite - mi 1792.7 - 6600 ft
- CS1794 - Campsite - mi 1793.7 - 6580 ft
- DivideTR - Divide Trail junction - mi 1794.9 - 6815 ft
- SnowLakeTR - Snow Lake trail junction - mi 1796 - 6693 ft

562000m E. 563000m E. 564000m E. 565000m E. 566000m E. WGS84 Zone 10T 568000m E.

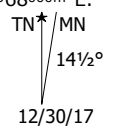
Map created with **TOPOIC** ©2008 National Geographic



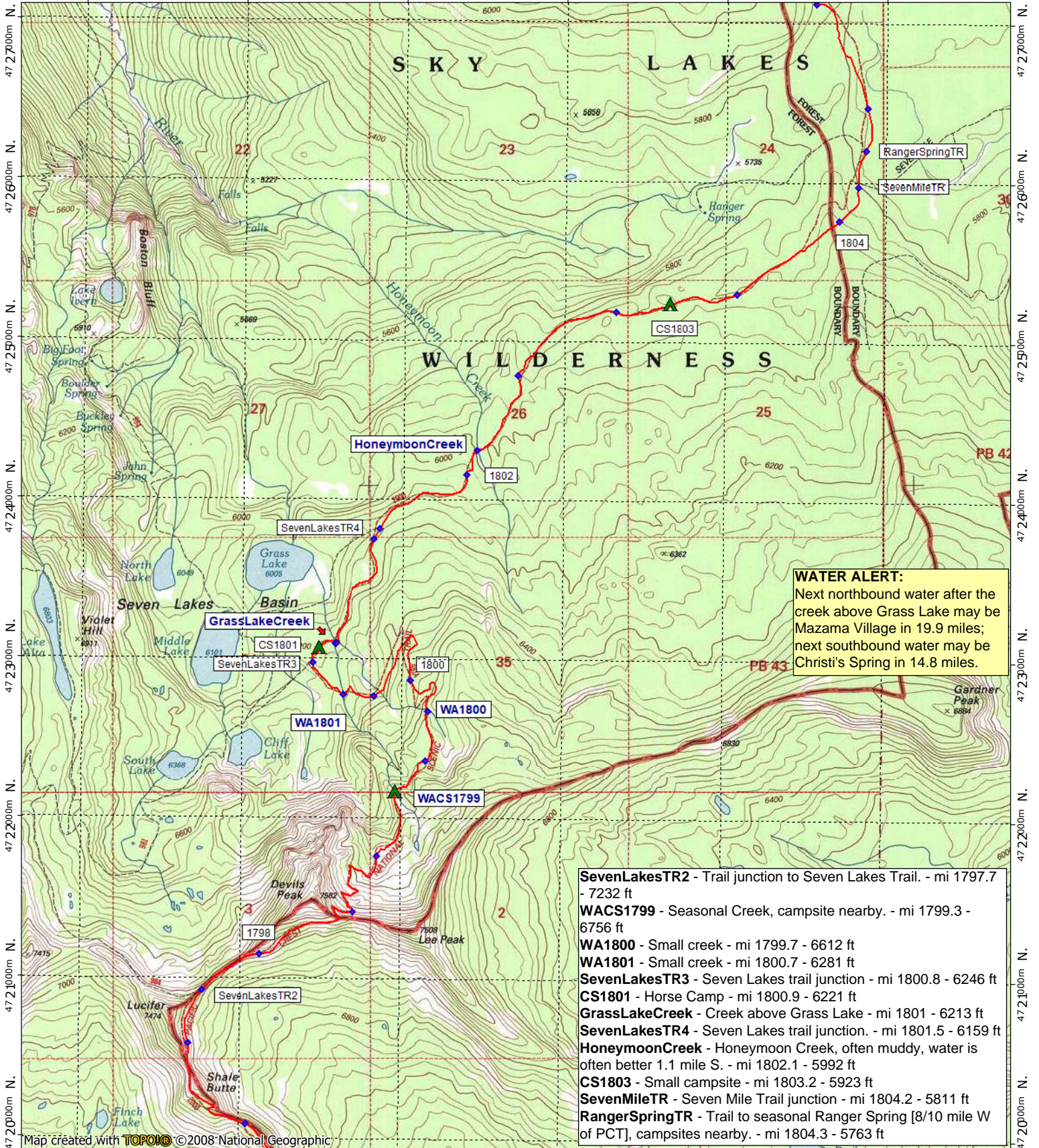
Support PCTA.org
Leave No Trace



contour interval 40 feet
1:31,680 1" = 1/2 mile
Copyright 2018 Halfmile Media
www.pctmap.net



563000m E. 564000m E. 565000m E. 566000m E. 567000m E. WGS84 Zone 10T 568000m E.



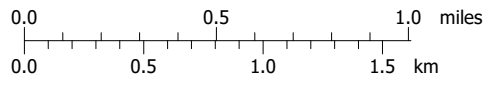
WATER ALERT:
 Next northbound water after the creek above Grass Lake may be Mazama Village in 19.9 miles; next southbound water may be Christi's Spring in 14.8 miles.

- SevenLakesTR2** - Trail junction to Seven Lakes Trail. - mi 1797.7 - 7232 ft
- WACS1799** - Seasonal Creek, campsite nearby. - mi 1799.3 - 6756 ft
- WA1800** - Small creek - mi 1799.7 - 6612 ft
- WA1801** - Small creek - mi 1800.7 - 6281 ft
- SevenLakesTR3** - Seven Lakes trail junction - mi 1800.8 - 6246 ft
- CS1801** - Horse Camp - mi 1800.9 - 6221 ft
- GrassLakeCreek** - Creek above Grass Lake - mi 1801 - 6213 ft
- SevenLakesTR4** - Seven Lakes trail junction. - mi 1801.5 - 6159 ft
- HoneymoonCreek** - Honeymoon Creek, often muddy, water is often better 1.1 mile S. - mi 1802.1 - 5992 ft
- CS1803** - Small campsite - mi 1803.2 - 5923 ft
- SevenMileTR** - Seven Mile Trail junction - mi 1804.2 - 5811 ft
- RangerSpringTR** - Trail to seasonal Ranger Spring [8/10 mile W of PCT], campsite nearby. - mi 1804.3 - 5763 ft

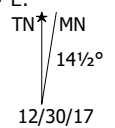
Map created with **TOPOIC** ©2008 National Geographic

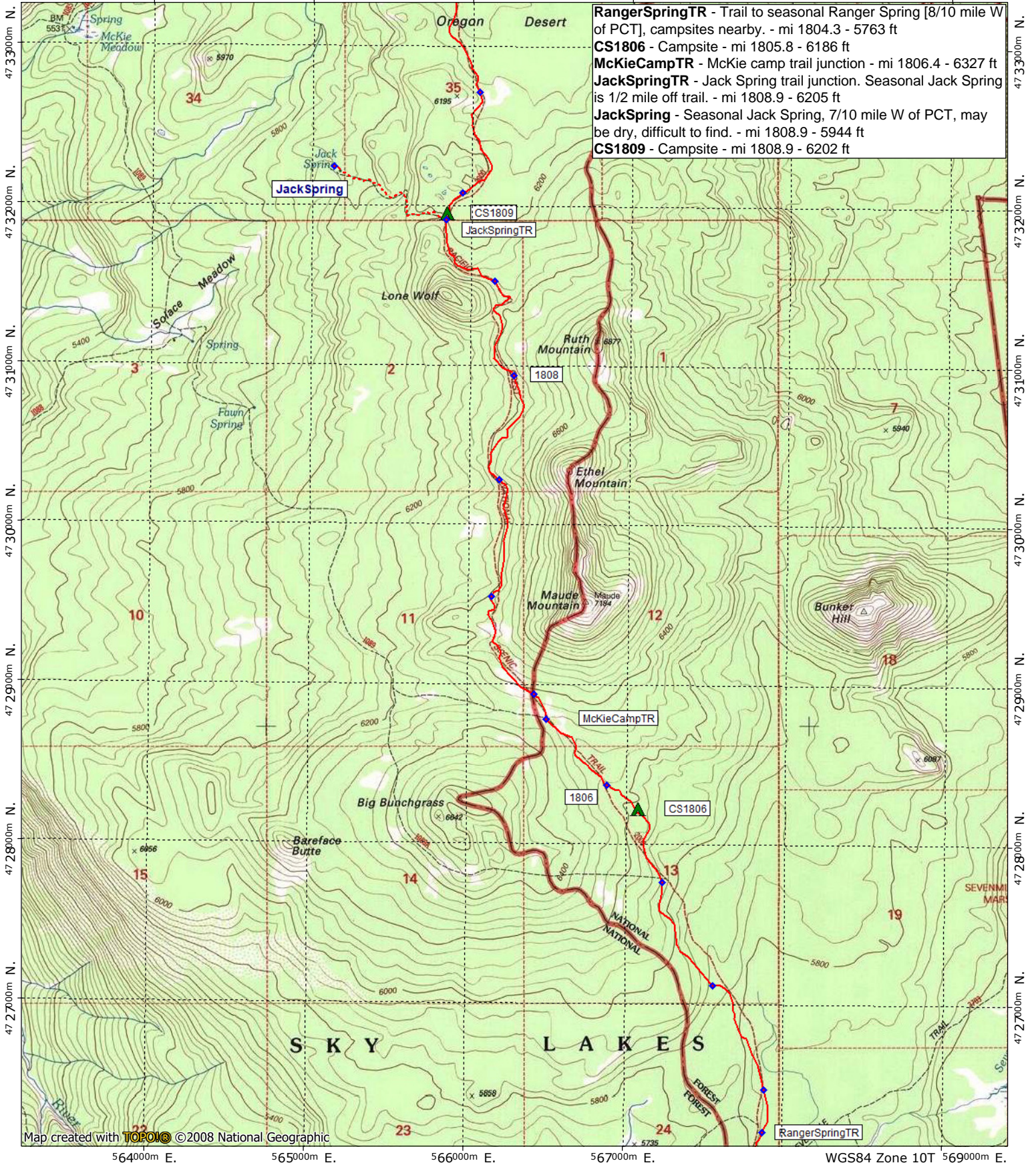


Support PCTA.org
 Leave No Trace



contour interval 40 feet
 1:31,680 1" = 1/2 mile
 Copyright 2018 Halfmile Media
 www.pctmap.net



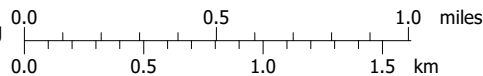


RangerSpringTR - Trail to seasonal Ranger Spring [8/10 mile W of PCT], campsites nearby. - mi 1804.3 - 5763 ft
CS1806 - Campsite - mi 1805.8 - 6186 ft
McKieCampTR - McKie camp trail junction - mi 1806.4 - 6327 ft
JackSpringTR - Jack Spring trail junction. Seasonal Jack Spring is 1/2 mile off trail. - mi 1808.9 - 6205 ft
JackSpring - Seasonal Jack Spring, 7/10 mile W of PCT, may be dry, difficult to find. - mi 1808.9 - 5944 ft
CS1809 - Campsite - mi 1808.9 - 6202 ft

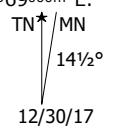
Map created with **Topo!** ©2008 National Geographic



Support PCTA.org
Leave No Trace

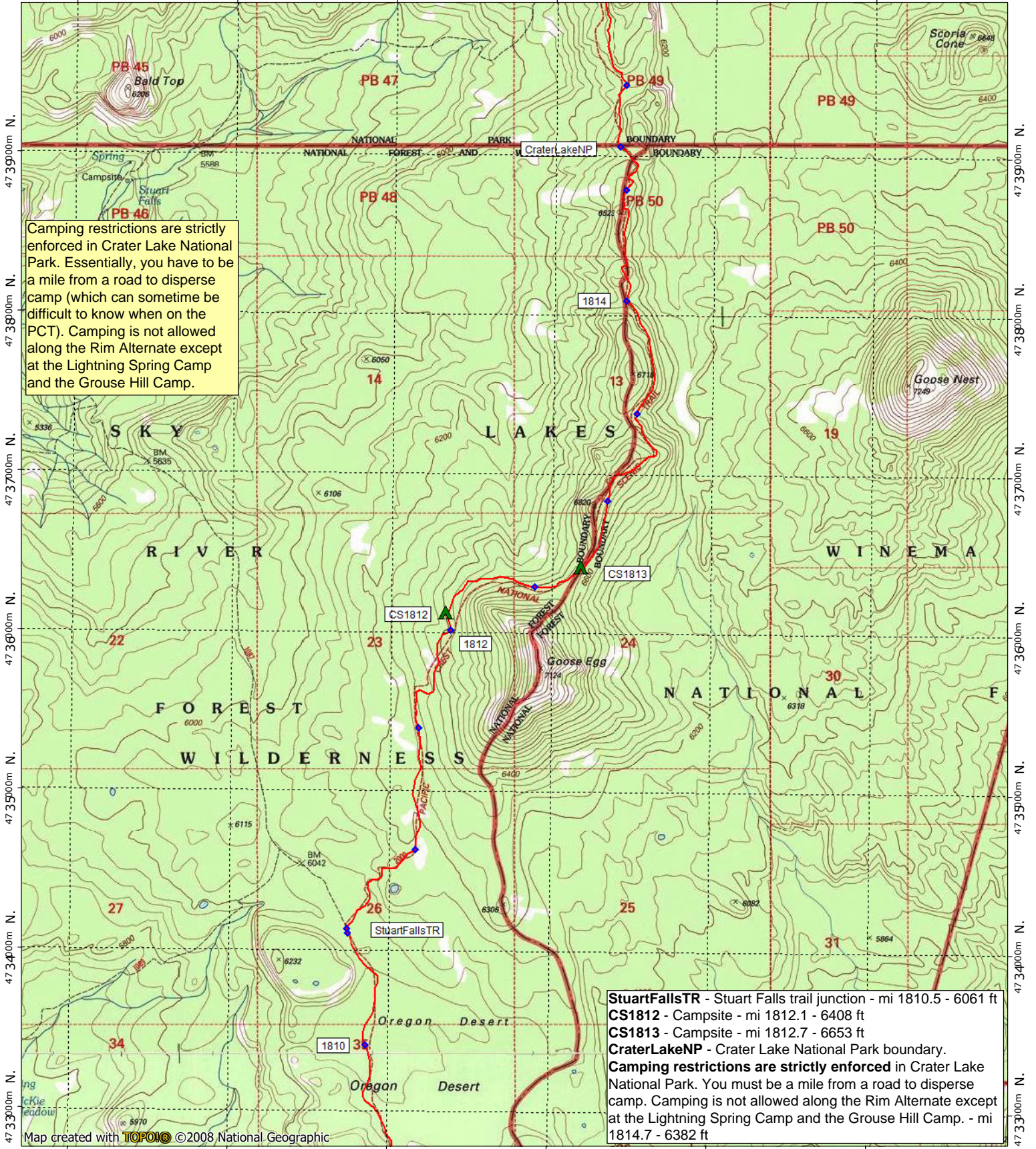


contour interval 40 feet
 1:31,680 1" = 1/2 mile
 Copyright 2018 Halfmile Media
 www.pctmap.net



Oregon Section C - Page 7

564000m E. 565000m E. 566000m E. 567000m E. 568000m E. WGS84 Zone 10T 569000m E.



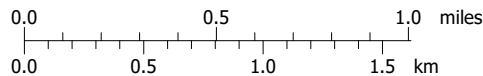
Camping restrictions are strictly enforced in Crater Lake National Park. Essentially, you have to be a mile from a road to disperse camp (which can sometime be difficult to know when on the PCT). Camping is not allowed along the Rim Alternate except at the Lightning Spring Camp and the Grouse Hill Camp.

StuartFallsTR - Stuart Falls trail junction - mi 1810.5 - 6061 ft
CS1812 - Campsite - mi 1812.1 - 6408 ft
CS1813 - Campsite - mi 1812.7 - 6653 ft
CraterLakeNP - Crater Lake National Park boundary.
Camping restrictions are strictly enforced in Crater Lake National Park. You must be a mile from a road to disperse camp. Camping is not allowed along the Rim Alternate except at the Lightning Spring Camp and the Grouse Hill Camp. - mi 1814.7 - 6382 ft

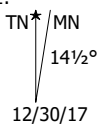
Map created with **TOPOIC** ©2008 National Geographic



Support PCTA.org
 Leave No Trace



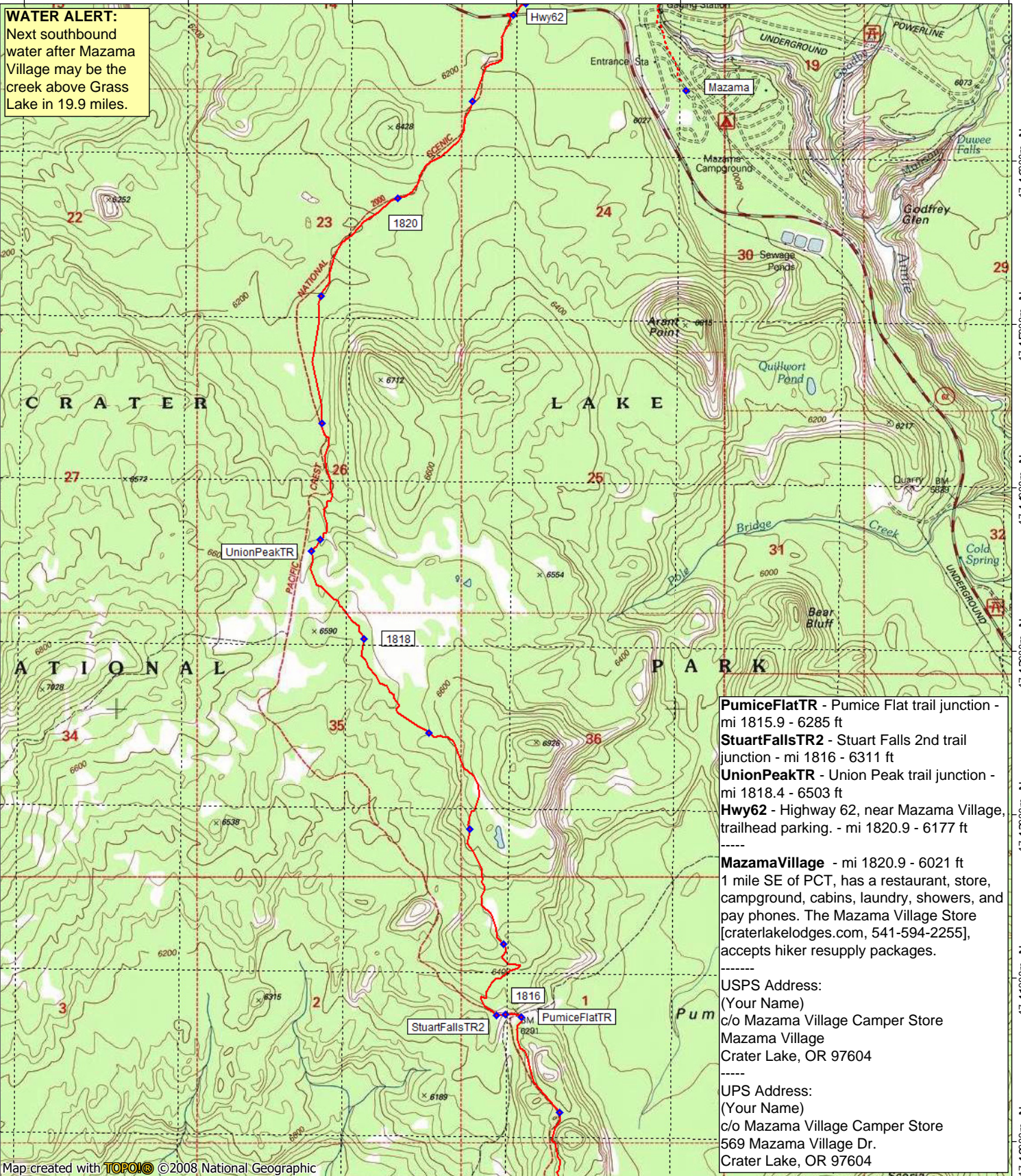
contour interval 40 feet
 1:31,680 1" = 1/2 mile
 Copyright 2018 Halfmile Media
 www.pctmap.net



12/30/17

564000m E. 565000m E. 566000m E. 567000m E. 568000m E. WGS84 Zone 10T 570000m E.

WATER ALERT:
Next southbound water after Mazama Village may be the creek above Grass Lake in 19.9 miles.



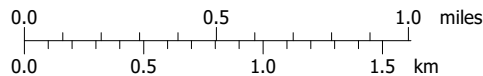
- PumiceFlatTR** - Pumice Flat trail junction - mi 1815.9 - 6285 ft
- StuartFallsTR2** - Stuart Falls 2nd trail junction - mi 1816 - 6311 ft
- UnionPeakTR** - Union Peak trail junction - mi 1818.4 - 6503 ft
- Hwy62** - Highway 62, near Mazama Village, trailhead parking. - mi 1820.9 - 6177 ft
- MazamaVillage** - mi 1820.9 - 6021 ft
1 mile SE of PCT, has a restaurant, store, campground, cabins, laundry, showers, and pay phones. The Mazama Village Store [craterlakelodges.com, 541-594-2255], accepts hiker resupply packages.
- USPS Address:**
(Your Name)
c/o Mazama Village Camper Store
Mazama Village
Crater Lake, OR 97604
- UPS Address:**
(Your Name)
c/o Mazama Village Camper Store
569 Mazama Village Dr.
Crater Lake, OR 97604

Map created with **TOPOIC** ©2008 National Geographic

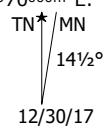
564000m E. 565000m E. 566000m E. 567000m E. 568000m E. WGS84 Zone 10T 570000m E.

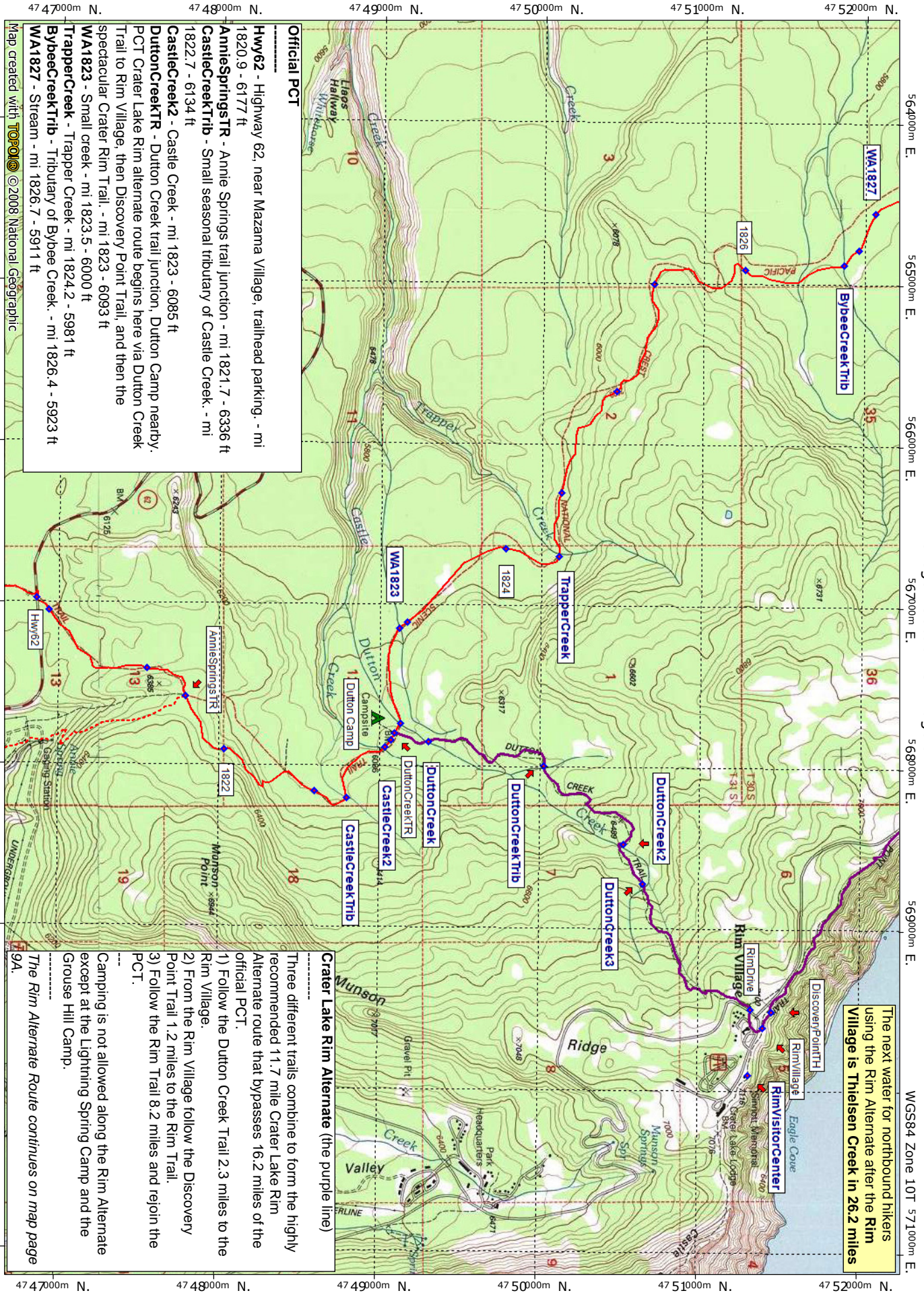


Support PCTA.org
Leave No Trace



contour interval 40 feet
1:31,680 1" = 1/2 mile
Copyright 2018 Halfmile Media
www.pctmap.net





The next water for northbound hikers using the Rim Alternate after the Rim Village is Thielsen Creek in 26.2 miles

Official PCT

Hwy62 - Highway 62, near Mazama Village, trailhead parking. - mi 1820.9 - 6177 ft

AnnieSpringstr - Annie Springs trail junction - mi 1821.7 - 6336 ft

CastleCreekTrib - Small seasonal tributary of Castle Creek. - mi 1822.7 - 6134 ft

CastleCreek2 - Castle Creek - mi 1823. - 6085 ft

DuttonCreekTR - Dutton Creek trail junction, Dutton Camp nearby. PCT Crater Lake Rim alternate route begins here via Dutton Creek Trail to Rim Village, then Discovery Point Trail, and then the spectacular Crater Rim Trail. - mi 1823 - 6093 ft

WA1823 - Small creek - mi 1823.5 - 6000 ft

TrapperCreek - Trapper Creek - mi 1824.2 - 5981 ft

BybeeCreekTrib - Tributary of Bybee Creek. - mi 1826.4 - 5923 ft

WA1827 - Stream - mi 1826.7 - 5911 ft

Crater Lake Rim Alternate (the purple line)

Three different trails combine to form the highly recommended 11.7 mile Crater Lake Rim Alternate route that bypasses 16.2 miles of the official PCT.

- 1) Follow the Dutton Creek Trail 2.3 miles to the Rim Village.
- 2) From the Rim Village follow the Discovery Point Trail 1.2 miles to the Rim Trail.
- 3) Follow the Rim Trail 8.2 miles and rejoin the PCT.

Camping is not allowed along the Rim Alternate except at the Lightning Spring Camp and the Grouse Hill Camp.

The Rim Alternate Route continues on map page 9A.

Map created with **TOPOM** © 2008 National Geographic

564000m E. 565000m E. 566000m E. 567000m E. 568000m E. 569000m E.

47 47000m N. 47 48000m N. 47 49000m N. 47 50000m N. 47 51000m N. 47 52000m N.

0.0 0.5 1.0 1.5 km

0.0 0.5 1.0 miles

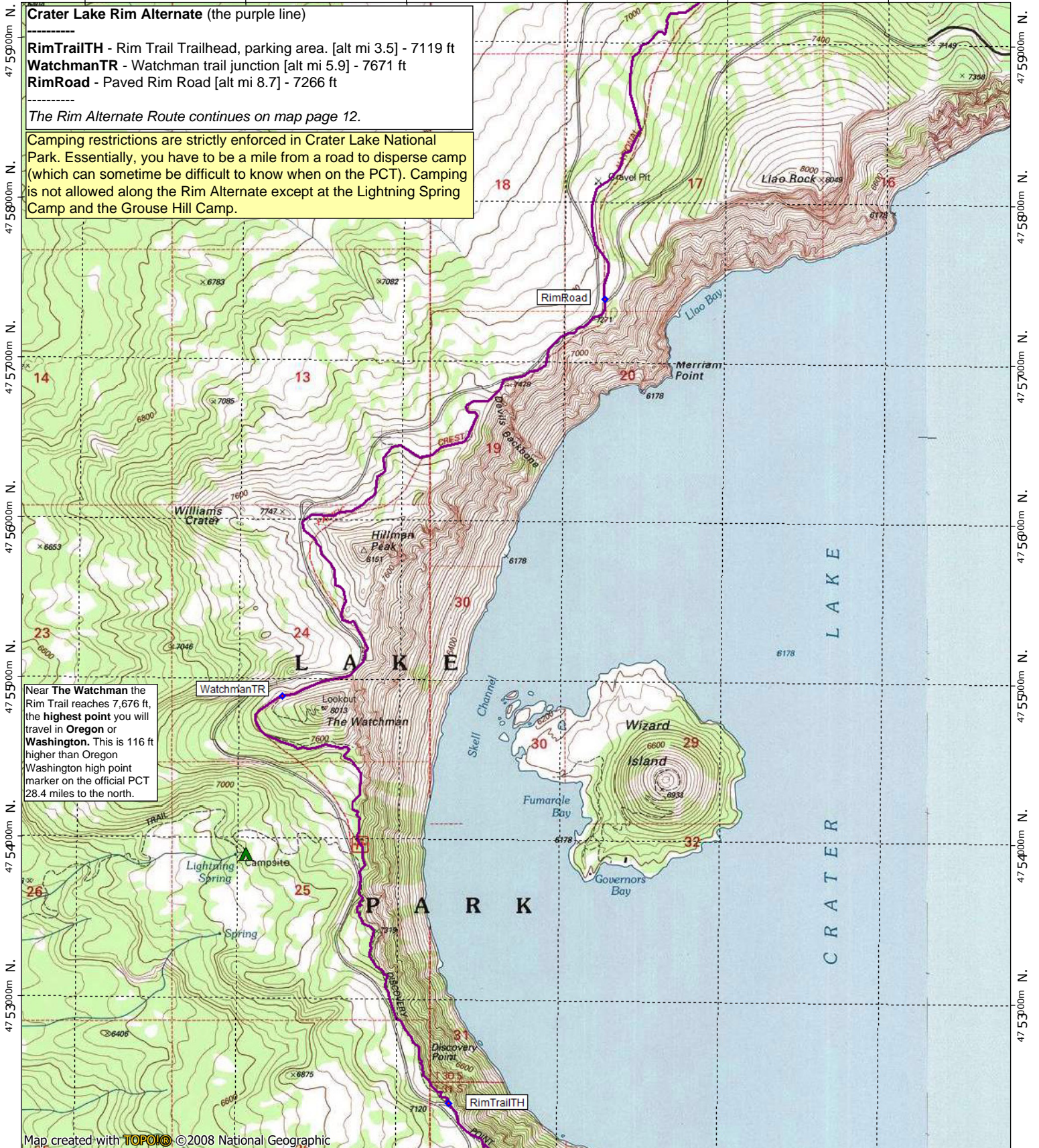
contour interval 40 feet
1:31,680 1" = 1/2 mile
Copyright 2018 Hall's Media
www.pctmap.net

WGS84 Zone 10T 571000m E.
TN MN
14 1/2°
12/30/17

NATIONAL GEOGRAPHIC

Oregon Section C - Page 9A

566000m E. 567000m E. 568000m E. 569000m E. 570000m E. WGS84 Zone 10T 571000m E.



Crater Lake Rim Alternate (the purple line)
RimTrailTH - Rim Trail Trailhead, parking area. [alt mi 3.5] - 7119 ft
WatchmanTR - Watchman trail junction [alt mi 5.9] - 7671 ft
RimRoad - Paved Rim Road [alt mi 8.7] - 7266 ft

The Rim Alternate Route continues on map page 12.

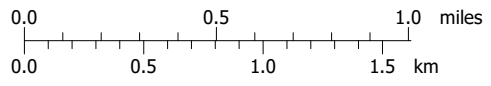
Camping restrictions are strictly enforced in Crater Lake National Park. Essentially, you have to be a mile from a road to disperse camp (which can sometime be difficult to know when on the PCT). Camping is not allowed along the Rim Alternate except at the Lightning Spring Camp and the Grouse Hill Camp.

Near **The Watchman** the Rim Trail reaches 7,676 ft, the **highest point** you will travel in **Oregon** or **Washington**. This is 116 ft higher than Oregon Washington high point marker on the official PCT 28.4 miles to the north.

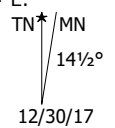
Map created with **TOPOLIC** ©2008 National Geographic

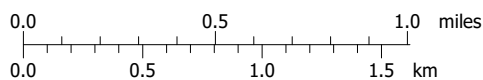
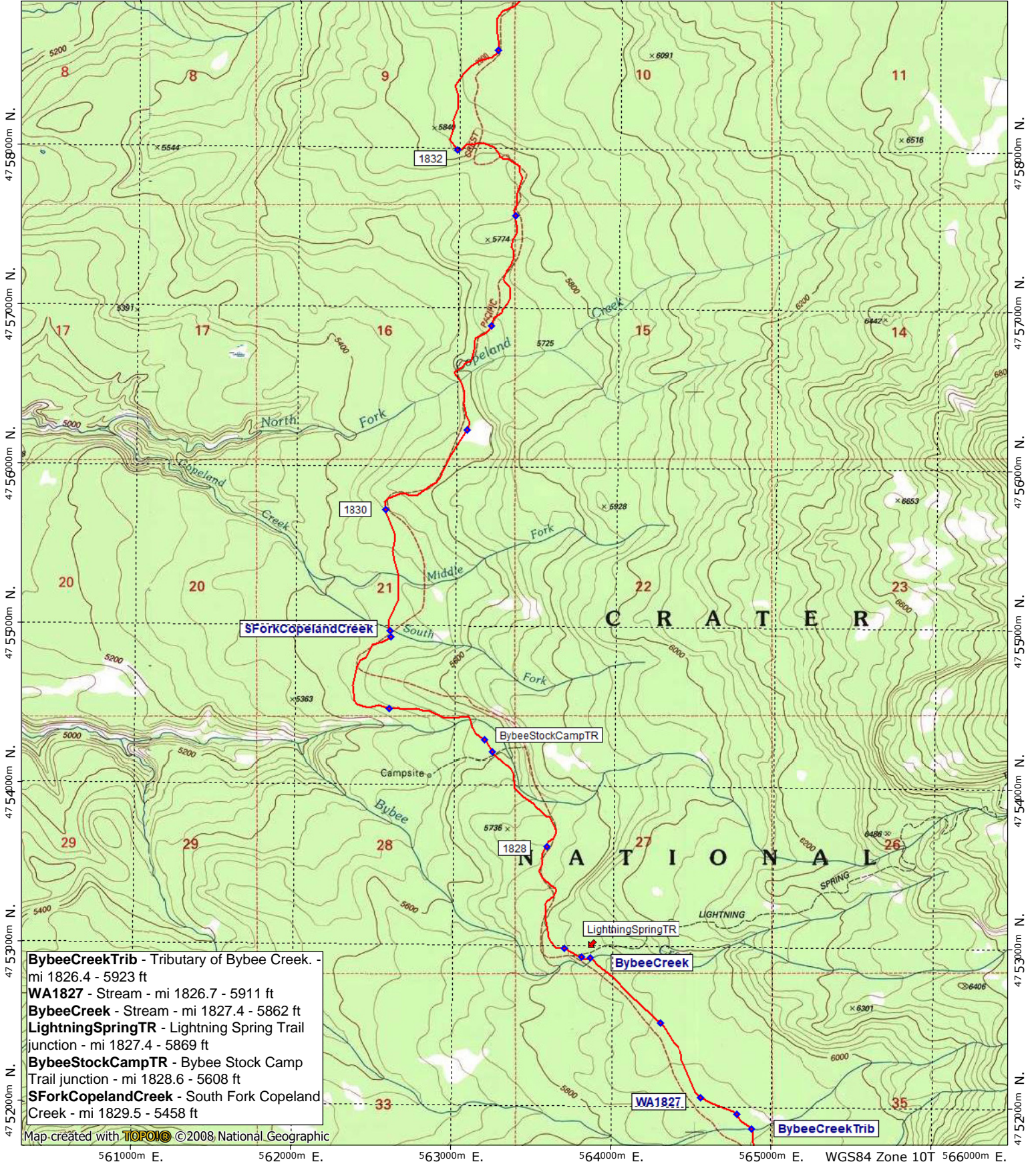


Support PCTA.org
 Leave No Trace

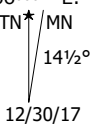


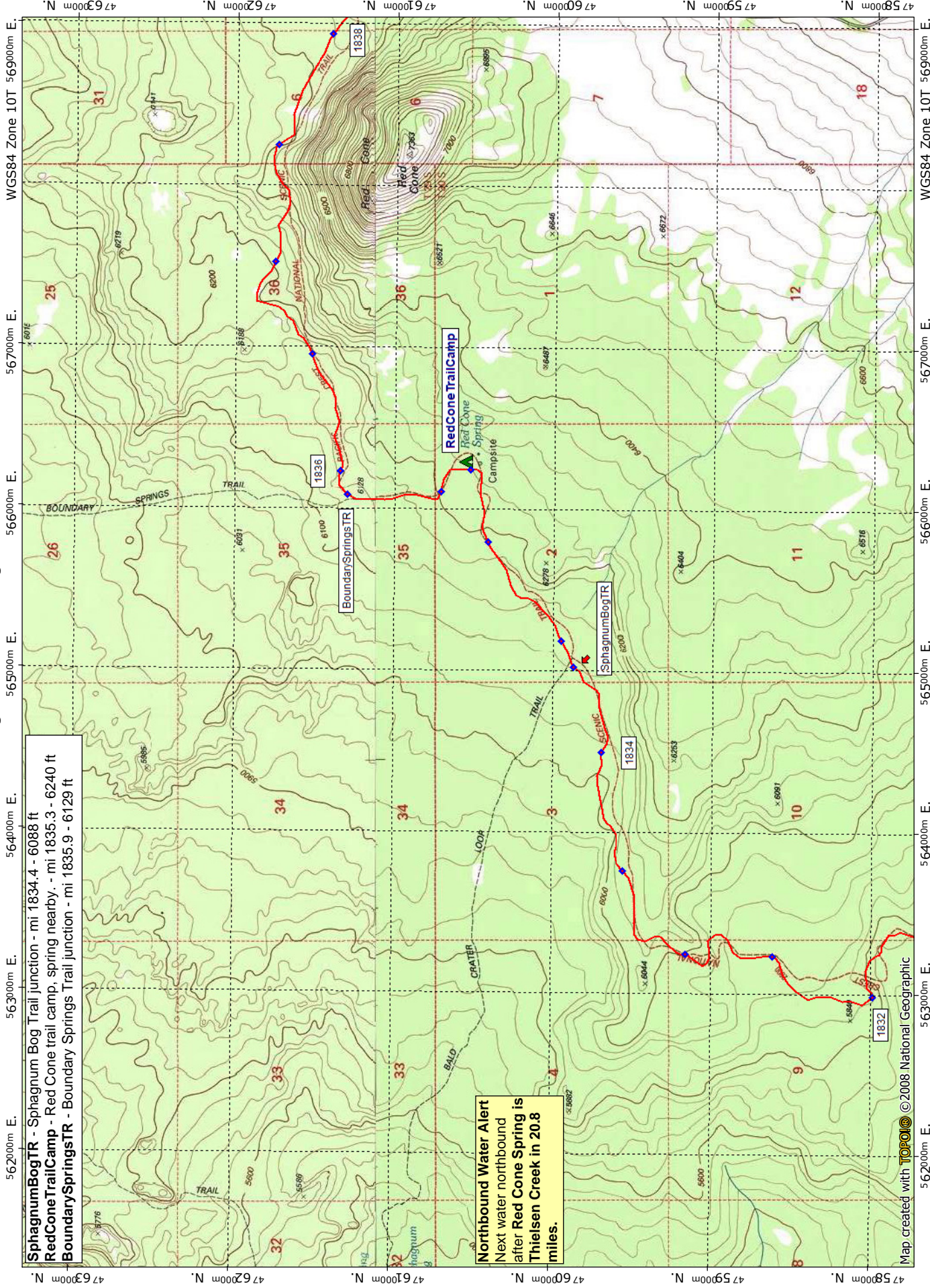
contour interval 40 feet
 1:31,680 1" = 1/2 mile
 Copyright 2018 Halfmile Media
 www.pctmap.net





contour interval 40 feet
 1:31,680 1" = 1/2 mile
 Copyright 2018 Halfmile Media
 www.pctmap.net





SphagnumBogTR - Sphagnum Bog Trail junction - mi 1834.4 - 6088 ft
RedConeTrailCamp - Red Cone trail camp, spring nearby, - mi 1835.3 - 6240 ft
BoundarySpringsTR - Boundary Springs Trail junction - mi 1835.9 - 6129 ft

Northbound Water Alert
 Next water northbound
 after Red Cone Spring is
 Thielsen Creek in 20.8
 miles.

Map created with **TOPO!** ©2008 National Geographic

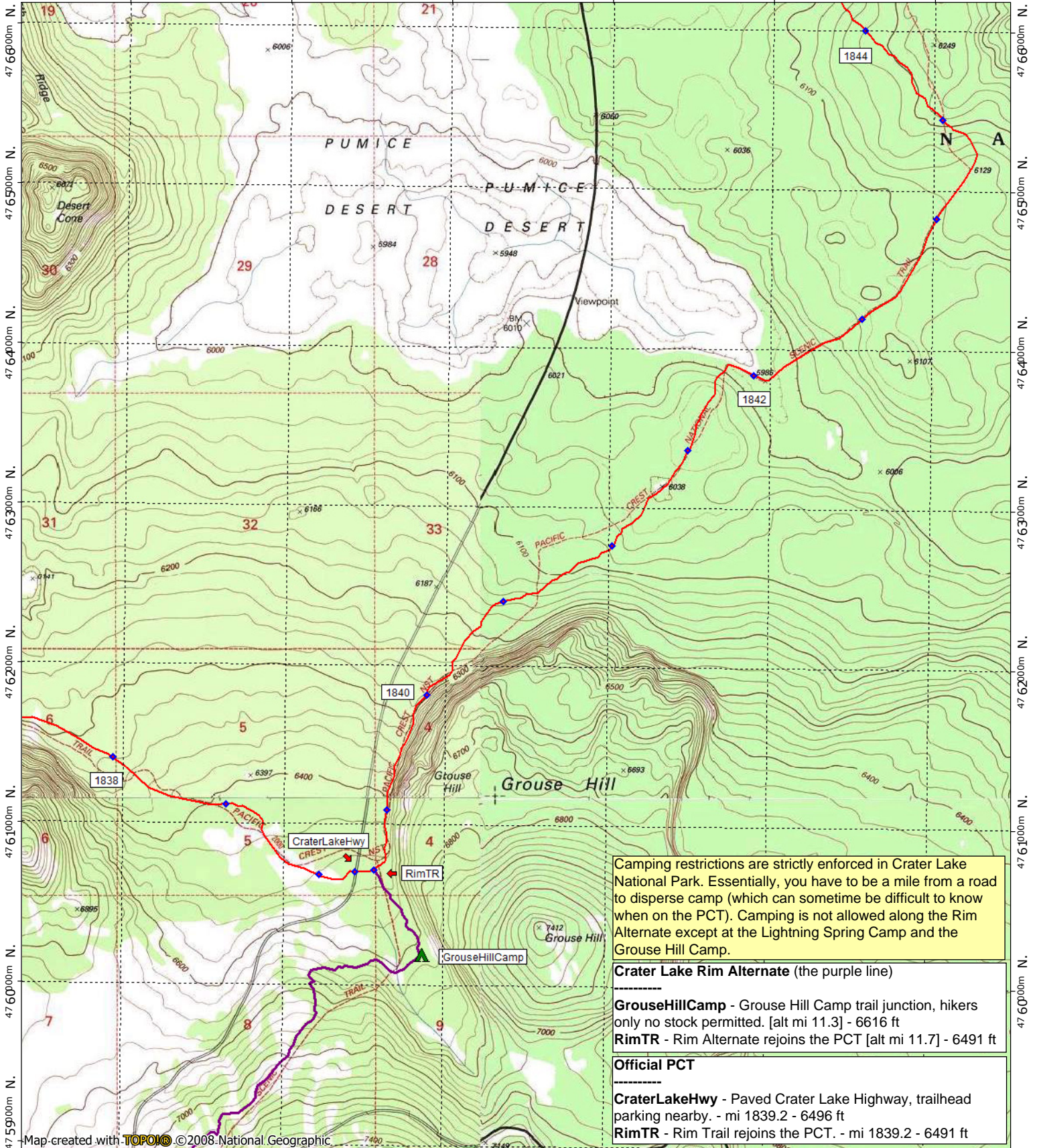


contour interval 40 feet
 1:31,680 1" = 1/2 mile
 Copyright 2018 Halfmile Media
 www.pctmap.net

4758000m N. 4759000m N. 4760000m N. 4761000m N. 4762000m N. 4763000m N.
 WGS84 Zone 10T 5690000m E.
 TNM MN 141/2°
 12/30/17

Oregon Section C - Page 12

569000m E. 570000m E. 571000m E. 572000m E. 573000m E. WGS84 Zone 10T 574000m E.



Camping restrictions are strictly enforced in Crater Lake National Park. Essentially, you have to be a mile from a road to disperse camp (which can sometime be difficult to know when on the PCT). Camping is not allowed along the Rim Alternate except at the Lightning Spring Camp and the Grouse Hill Camp.

- Crater Lake Rim Alternate (the purple line)**

- Grouse Hill Camp** - Grouse Hill Camp trail junction, hikers only no stock permitted. [alt mi 11.3] - 6616 ft
- RimTR** - Rim Alternate rejoins the PCT [alt mi 11.7] - 6491 ft

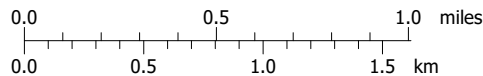
- Official PCT**

- Crater Lake Hwy** - Paved Crater Lake Highway, trailhead parking nearby. - mi 1839.2 - 6496 ft
- RimTR** - Rim Trail rejoins the PCT. - mi 1839.2 - 6491 ft

Map created with **TOPOIC** ©2008 National Geographic



Support PCTA.org
Leave No Trace



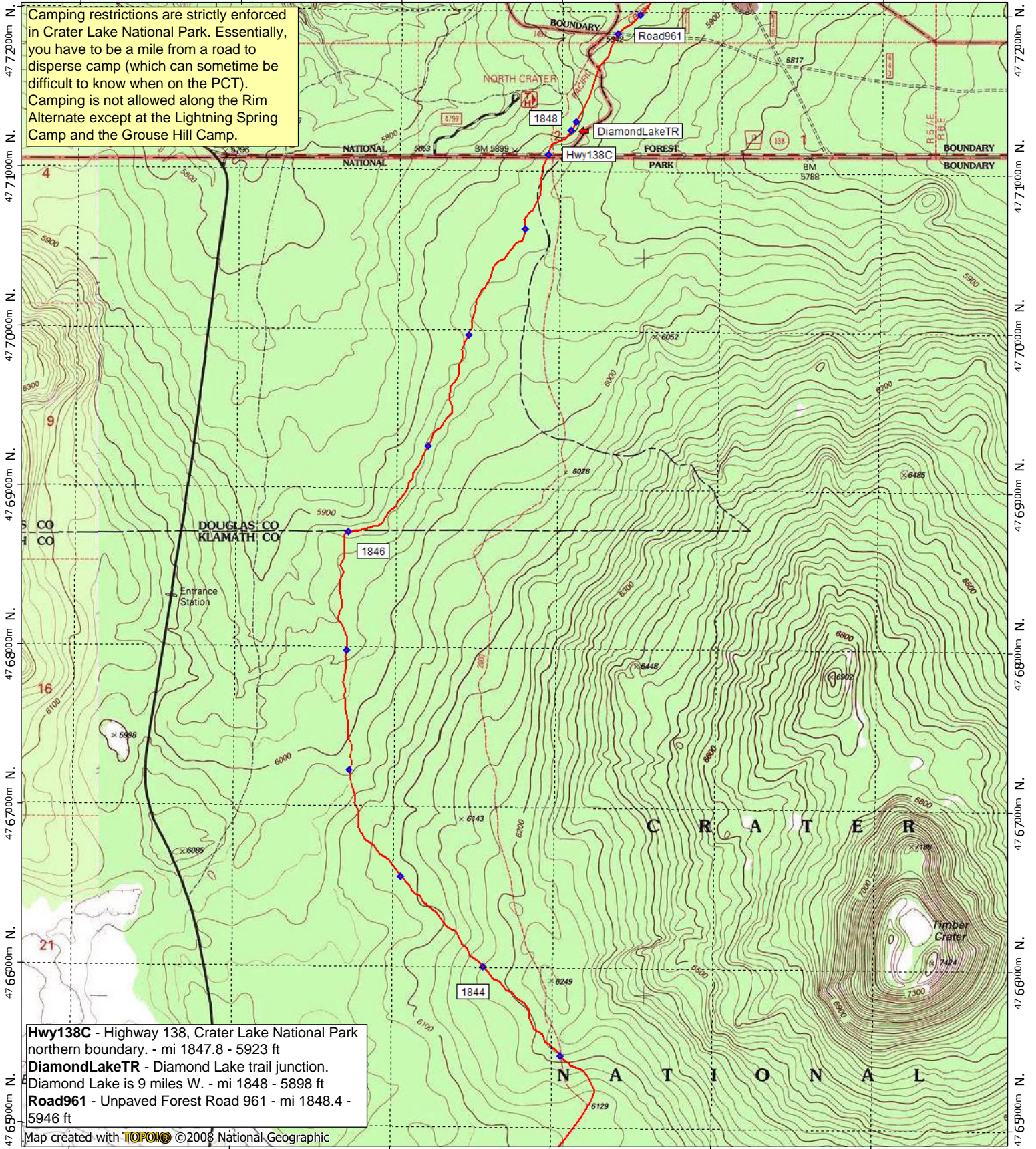
contour interval 40 feet
1:31,680 1" = 1/2 mile
Copyright 2018 Halfmile Media
www.pctmap.net



12/30/17

571000m E. 572000m E. 573000m E. 574000m E. 575000m E. WGS84 Zone 10T 576000m E.

Camping restrictions are strictly enforced in Crater Lake National Park. Essentially, you have to be a mile from a road to disperse camp (which can sometime be difficult to know when on the PCT). Camping is not allowed along the Rim Alternate except at the Lightning Spring Camp and the Grouse Hill Camp.

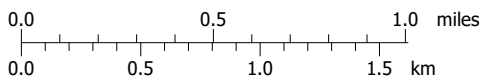


Hwy138C - Highway 138, Crater Lake National Park northern boundary. - mi 1847.8 - 5923 ft
DiamondLakeTR - Diamond Lake trail junction.
Diamond Lake is 9 miles W. - mi 1848 - 5898 ft
Road961 - Unpaved Forest Road 961 - mi 1848.4 - 5946 ft

Map created with **TOPOIC** ©2008 National Geographic



Support PCTA.org
Leave No Trace



contour interval 40 feet
1:31,680 1" = 1/2 mile
Copyright 2018 Halfmile Media
www.pctmap.net



