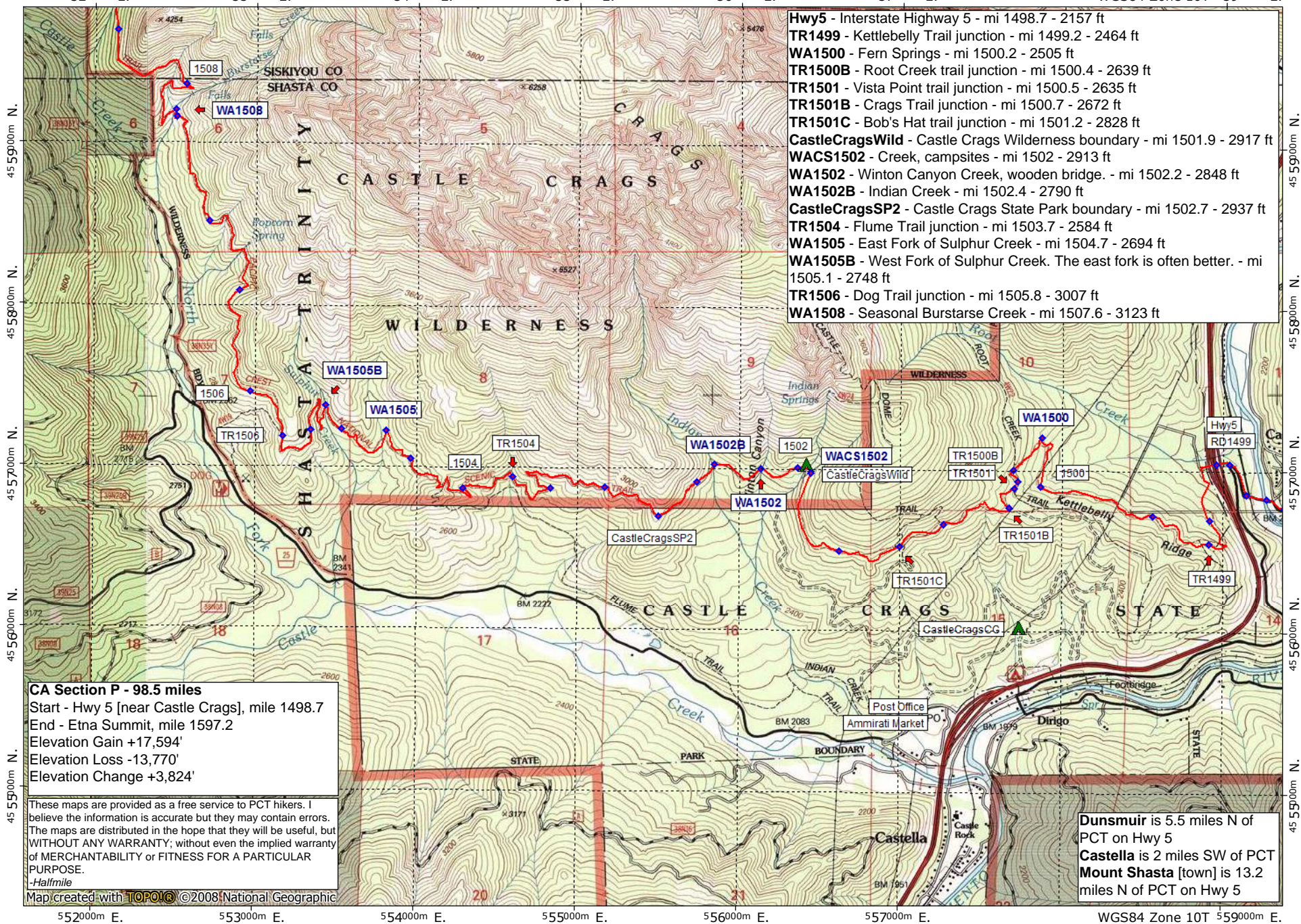


552000m E. 553000m E. 554000m E. 555000m E. 556000m E. 557000m E. WGS84 Zone 10T 559000m E.



- Hwy5** - Interstate Highway 5 - mi 1498.7 - 2157 ft
- TR1499** - Kettlebelly Trail junction - mi 1499.2 - 2464 ft
- WA1500** - Fern Springs - mi 1500.2 - 2505 ft
- TR1500B** - Root Creek trail junction - mi 1500.4 - 2639 ft
- TR1501** - Vista Point trail junction - mi 1500.5 - 2635 ft
- TR1501B** - Crags Trail junction - mi 1500.7 - 2672 ft
- TR1501C** - Bob's Hat trail junction - mi 1501.2 - 2828 ft
- CastleCragsWild** - Castle Crags Wilderness boundary - mi 1501.9 - 2917 ft
- WACS1502** - Creek, campsites - mi 1502 - 2913 ft
- WA1502** - Winton Canyon Creek, wooden bridge. - mi 1502.2 - 2848 ft
- WA1502B** - Indian Creek - mi 1502.4 - 2790 ft
- CastleCragsSP2** - Castle Crags State Park boundary - mi 1502.7 - 2937 ft
- TR1504** - Flume Trail junction - mi 1503.7 - 2584 ft
- WA1505** - East Fork of Sulphur Creek - mi 1504.7 - 2694 ft
- WA1505B** - West Fork of Sulphur Creek. The east fork is often better. - mi 1505.1 - 2748 ft
- TR1506** - Dog Trail junction - mi 1505.8 - 3007 ft
- WA1508** - Seasonal Burstarse Creek - mi 1507.6 - 3123 ft

CA Section P - 98.5 miles
 Start - Hwy 5 [near Castle Crags], mile 1498.7
 End - Etna Summit, mile 1597.2
 Elevation Gain +17,594'
 Elevation Loss -13,770'
 Elevation Change +3,824'

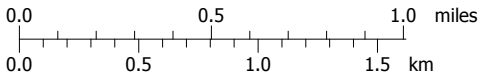
These maps are provided as a free service to PCT hikers. I believe the information is accurate but they may contain errors. The maps are distributed in the hope that they will be useful, but WITHOUT ANY WARRANTY; without even the implied warranty of MERCHANTABILITY or FITNESS FOR A PARTICULAR PURPOSE.
 -Halfmile

Map created with **TOPOLIC** ©2008 National Geographic

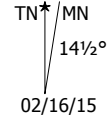
Dunsmuir is 5.5 miles N of PCT on Hwy 5
 Castella is 2 miles SW of PCT
 Mount Shasta [town] is 13.2 miles N of PCT on Hwy 5



Support PCTA.org
 Leave No Trace

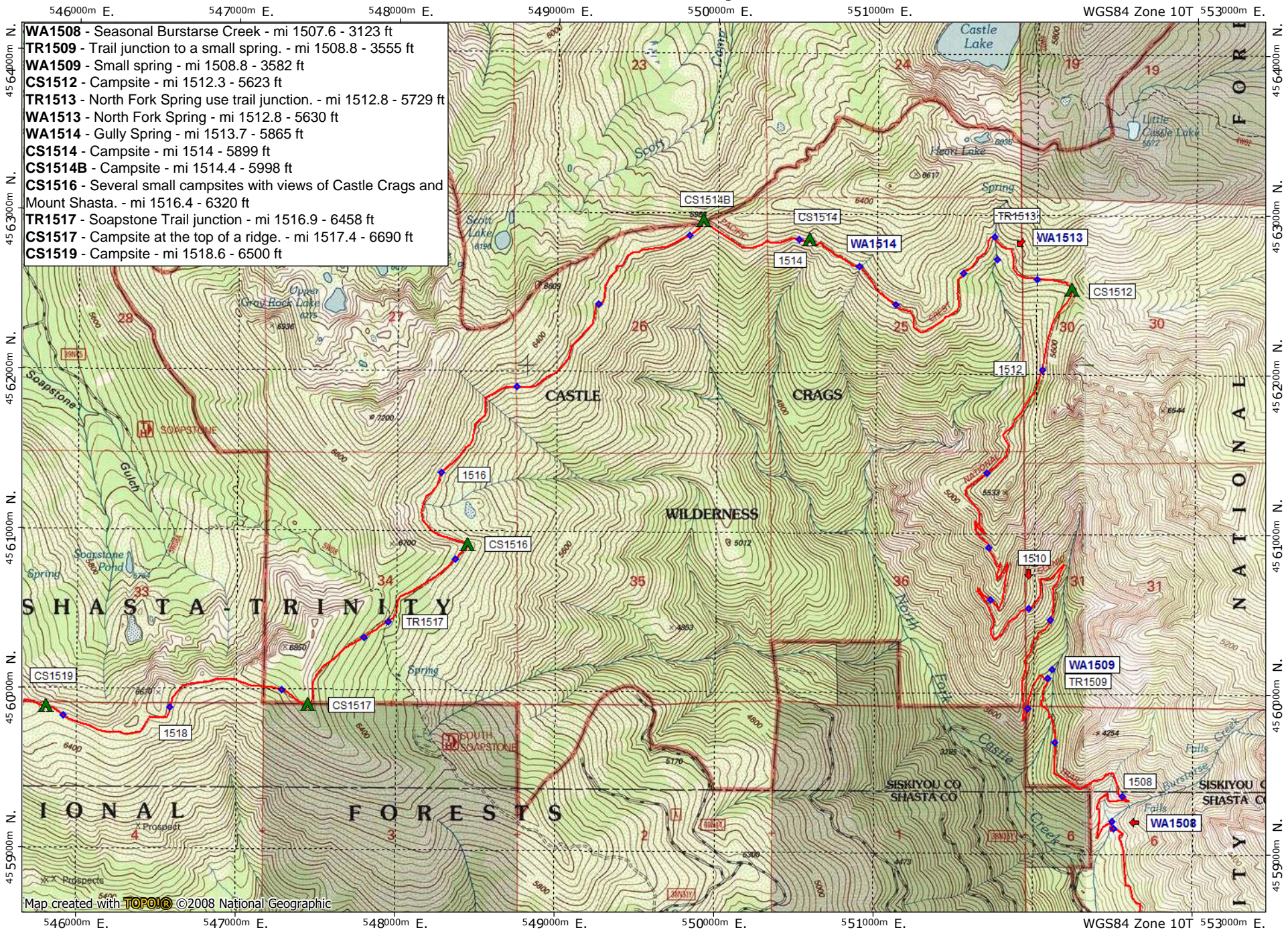


contour interval 40 feet
 1:31,680 1" = 1/2 mile
 Copyright 2015 Halfmile Media
 www.pctmap.net



02/16/15

California Section P - Page 2

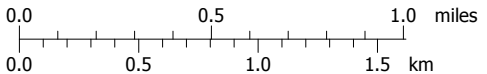


- WA1508** - Seasonal Burstarse Creek - mi 1507.6 - 3123 ft
- TR1509** - Trail junction to a small spring. - mi 1508.8 - 3555 ft
- WA1509** - Small spring - mi 1508.8 - 3582 ft
- CS1512** - Campsite - mi 1512.3 - 5623 ft
- TR1513** - North Fork Spring use trail junction. - mi 1512.8 - 5729 ft
- WA1513** - North Fork Spring - mi 1512.8 - 5630 ft
- WA1514** - Gully Spring - mi 1513.7 - 5865 ft
- CS1514** - Campsite - mi 1514 - 5899 ft
- CS1514B** - Campsite - mi 1514.4 - 5998 ft
- CS1516** - Several small campsites with views of Castle Crags and Mount Shasta. - mi 1516.4 - 6320 ft
- TR1517** - Soapstone Trail junction - mi 1516.9 - 6458 ft
- CS1517** - Campsite at the top of a ridge. - mi 1517.4 - 6690 ft
- CS1519** - Campsite - mi 1518.6 - 6500 ft

Map created with **TOPOIC** ©2008 National Geographic

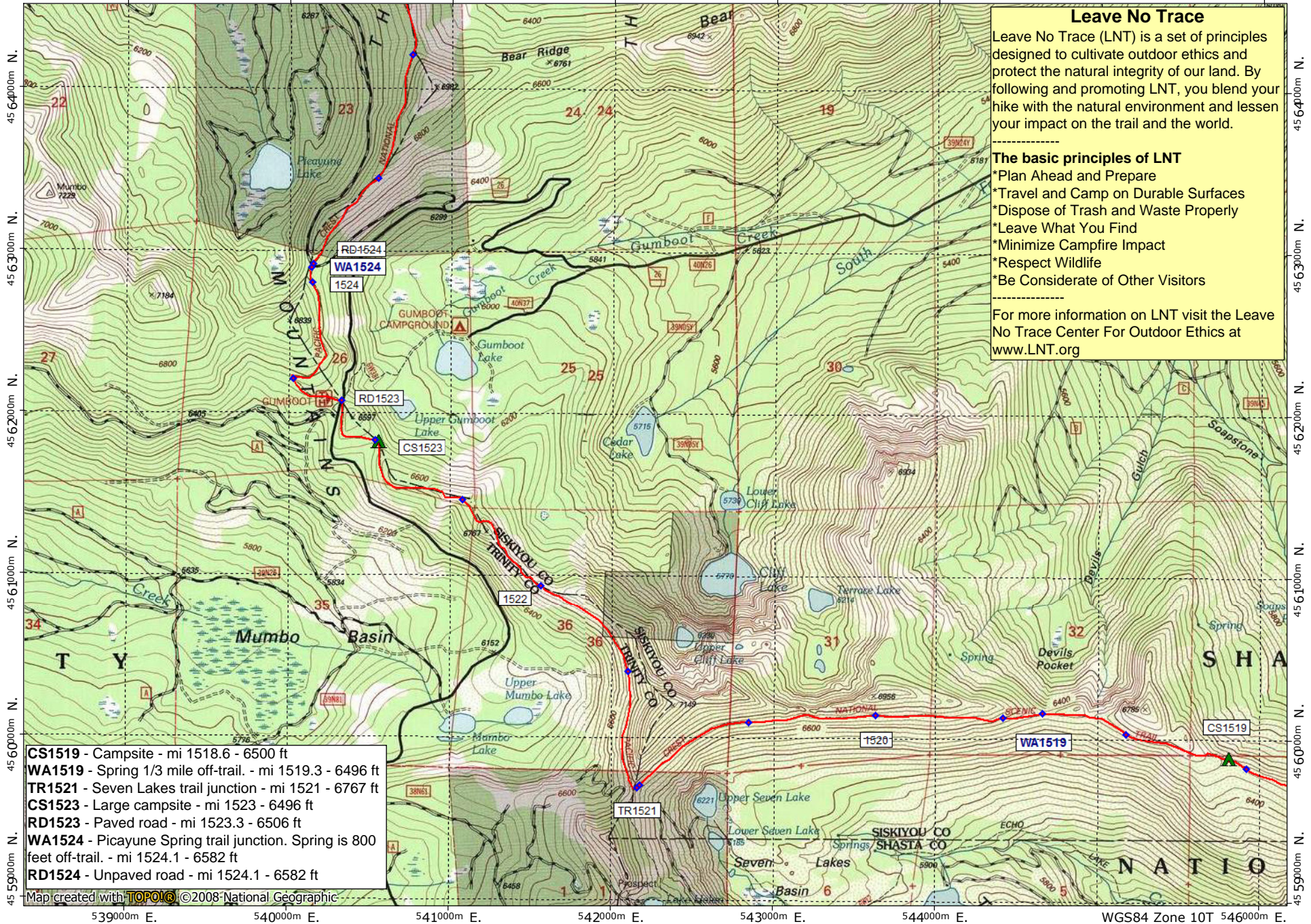


Support PCTA.org
Leave No Trace



contour interval 40 feet
1:31,680 1" = 1/2 mile
Copyright 2015 Halfmile Media
www.pctmap.net

TN MN
14 1/2°
02/15/15



Leave No Trace
 Leave No Trace (LNT) is a set of principles designed to cultivate outdoor ethics and protect the natural integrity of our land. By following and promoting LNT, you blend your hike with the natural environment and lessen your impact on the trail and the world.

The basic principles of LNT

- *Plan Ahead and Prepare
- *Travel and Camp on Durable Surfaces
- *Dispose of Trash and Waste Properly
- *Leave What You Find
- *Minimize Campfire Impact
- *Respect Wildlife
- *Be Considerate of Other Visitors

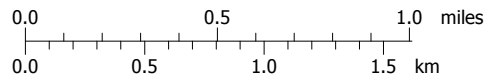
For more information on LNT visit the Leave No Trace Center For Outdoor Ethics at www.LNT.org

- CS1519** - Campsite - mi 1518.6 - 6500 ft
- WA1519** - Spring 1/3 mile off-trail. - mi 1519.3 - 6496 ft
- TR1521** - Seven Lakes trail junction - mi 1521 - 6767 ft
- CS1523** - Large campsite - mi 1523 - 6496 ft
- RD1523** - Paved road - mi 1523.3 - 6506 ft
- WA1524** - Picayune Spring trail junction. Spring is 800 feet off-trail. - mi 1524.1 - 6582 ft
- RD1524** - Unpaved road - mi 1524.1 - 6582 ft

Map created with **TOPOMAP** ©2008 National Geographic

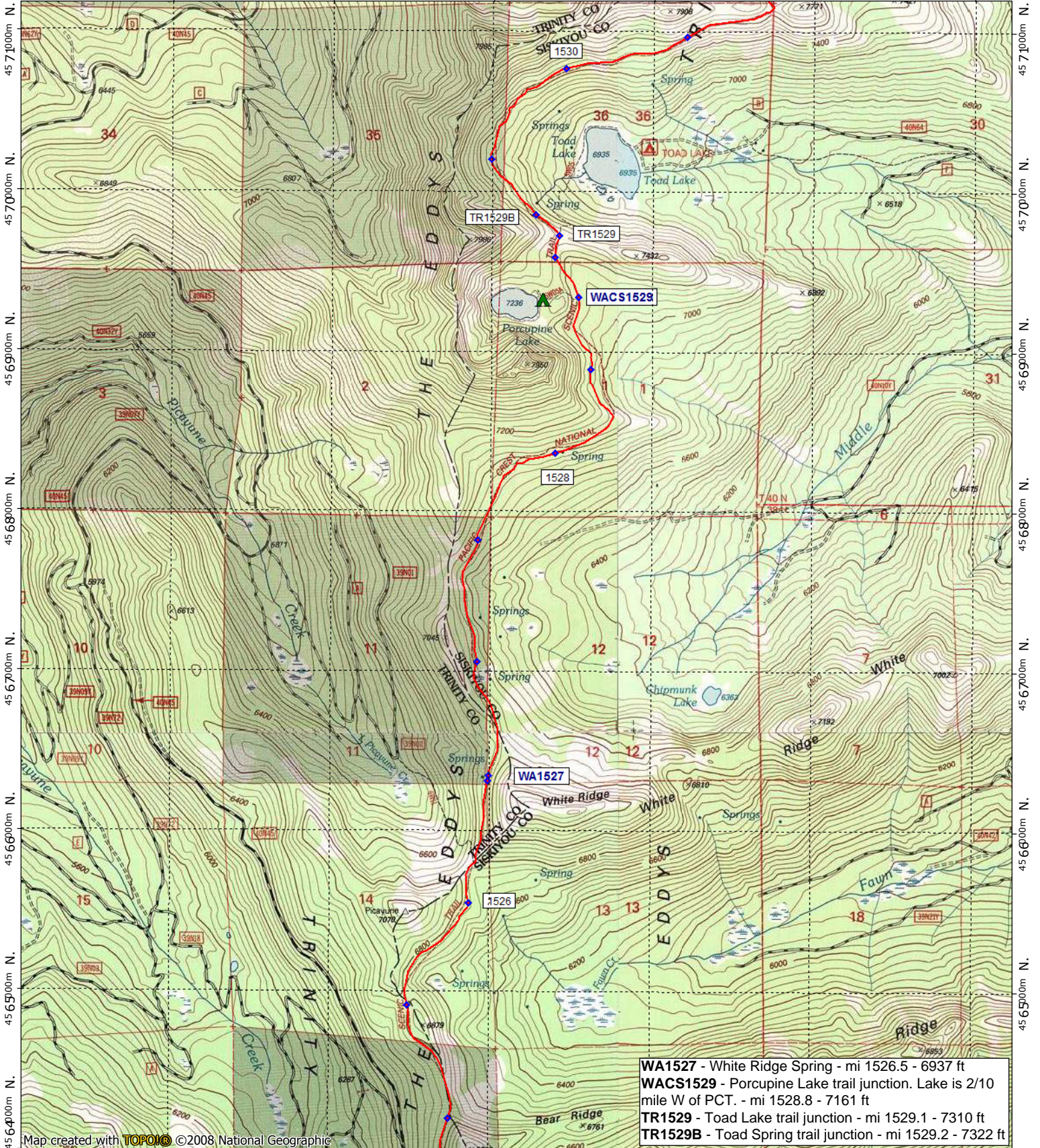


Support PCTA.org
 Leave No Trace



contour interval 40 feet
 1:31,680 1" = 1/2 mile
 Copyright 2015 Halfmile Media
www.pctmap.net

TN MN
 14 1/2°
 02/15/15

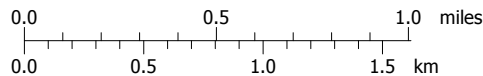


WA1527 - White Ridge Spring - mi 1526.5 - 6937 ft
WACS1529 - Porcupine Lake trail junction. Lake is 2/10 mile W of PCT. - mi 1528.8 - 7161 ft
TR1529 - Toad Lake trail junction - mi 1529.1 - 7310 ft
TR1529B - Toad Spring trail junction - mi 1529.2 - 7322 ft

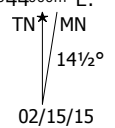
Map created with **TOPOLIC** ©2008 National Geographic



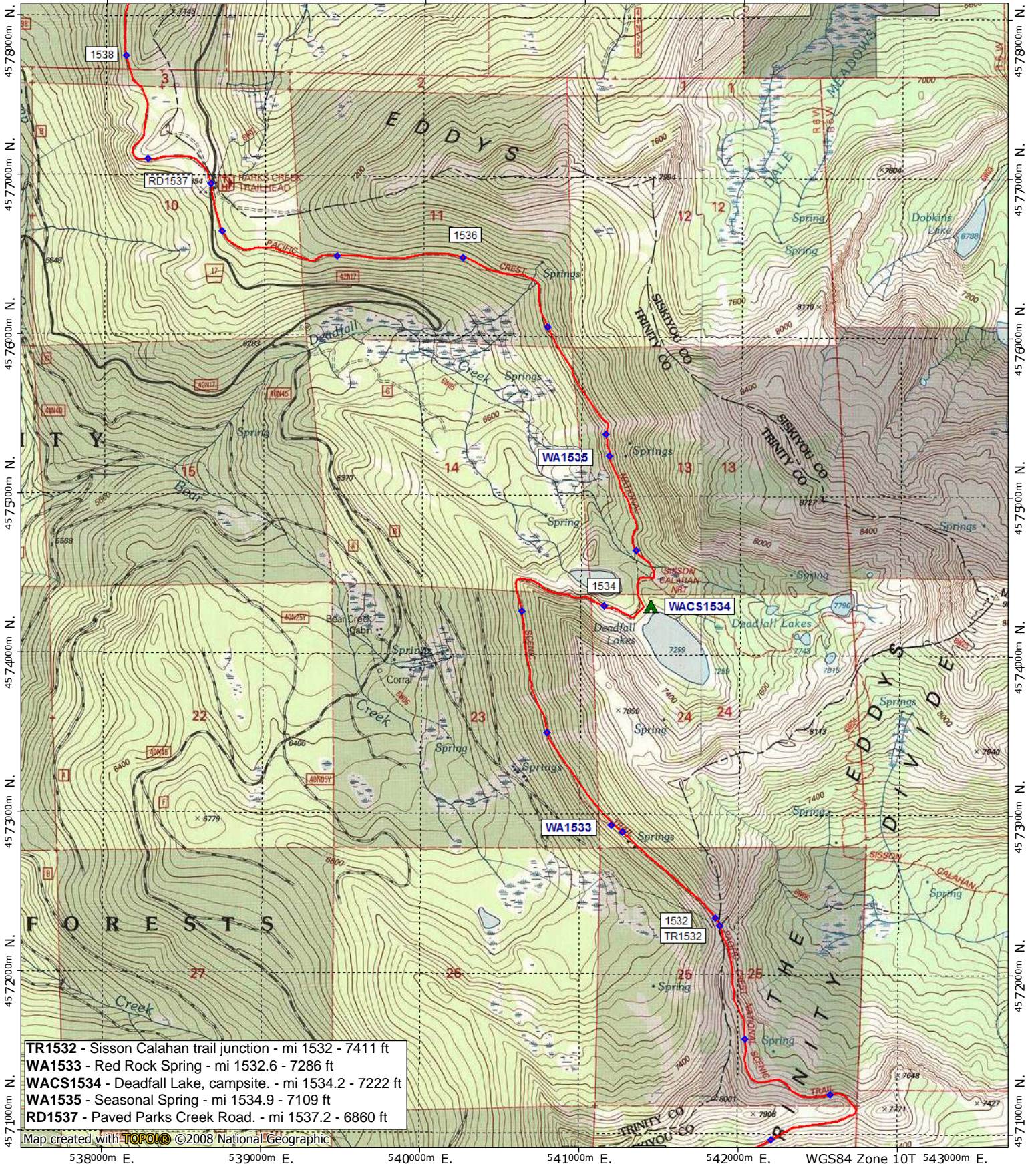
Support PCTA.org
Leave No Trace



contour interval 40 feet
 1:31,680 1" = 1/2 mile
 Copyright 2015 Halfmile Media
 www.pctmap.net



538000m E. 539000m E. 540000m E. 541000m E. 542000m E. WGS84 Zone 10T 543000m E.

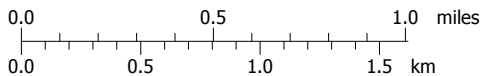


- TR1532** - Sisson Calahan trail junction - mi 1532 - 7411 ft
- WA1533** - Red Rock Spring - mi 1532.6 - 7286 ft
- WACS1534** - Deadfall Lake, campsite - mi 1534.2 - 7222 ft
- WA1535** - Seasonal Spring - mi 1534.9 - 7109 ft
- RD1537** - Paved Parks Creek Road - mi 1537.2 - 6860 ft

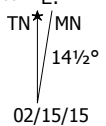
Map created with **TOPO!** ©2008 National Geographic



Support PCTA.org
Leave No Trace

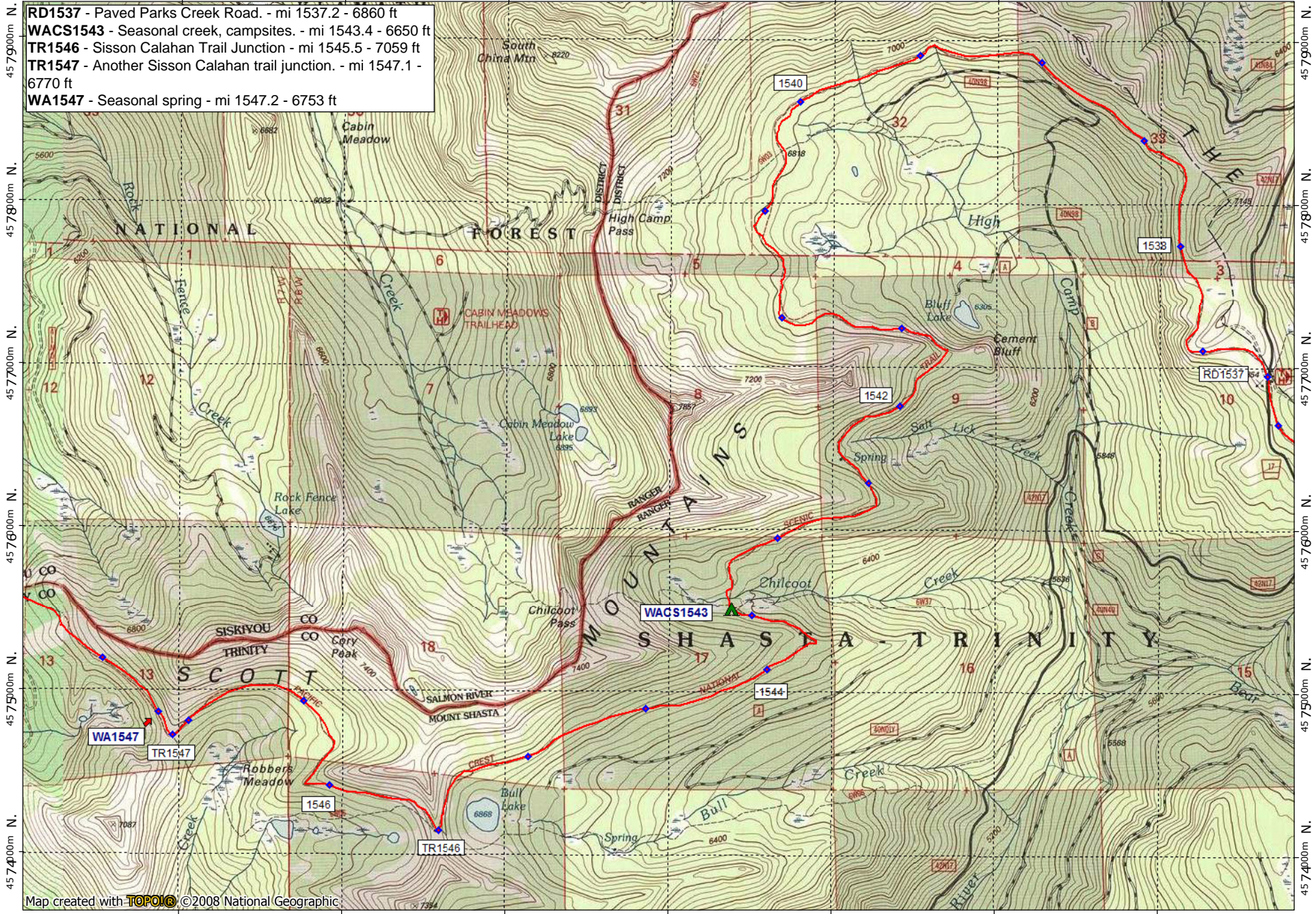


contour interval 40 feet
1:31,680 1" = 1/2 mile
Copyright 2015 Halfmile Media
www.pctmap.net



532000m E. 533000m E. 534000m E. 535000m E. 536000m E. 537000m E. WGS84 Zone 10T 538000m E.

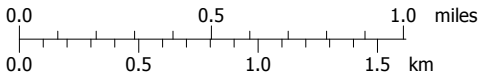
- RD1537** - Paved Parks Creek Road. - mi 1537.2 - 6860 ft
- WACS1543** - Seasonal creek, campsites. - mi 1543.4 - 6650 ft
- TR1546** - Sisson Calahan Trail Junction - mi 1545.5 - 7059 ft
- TR1547** - Another Sisson Calahan trail junction. - mi 1547.1 - 6770 ft
- WA1547** - Seasonal spring - mi 1547.2 - 6753 ft



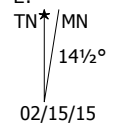
Map created with **TOPOIC** ©2008 National Geographic



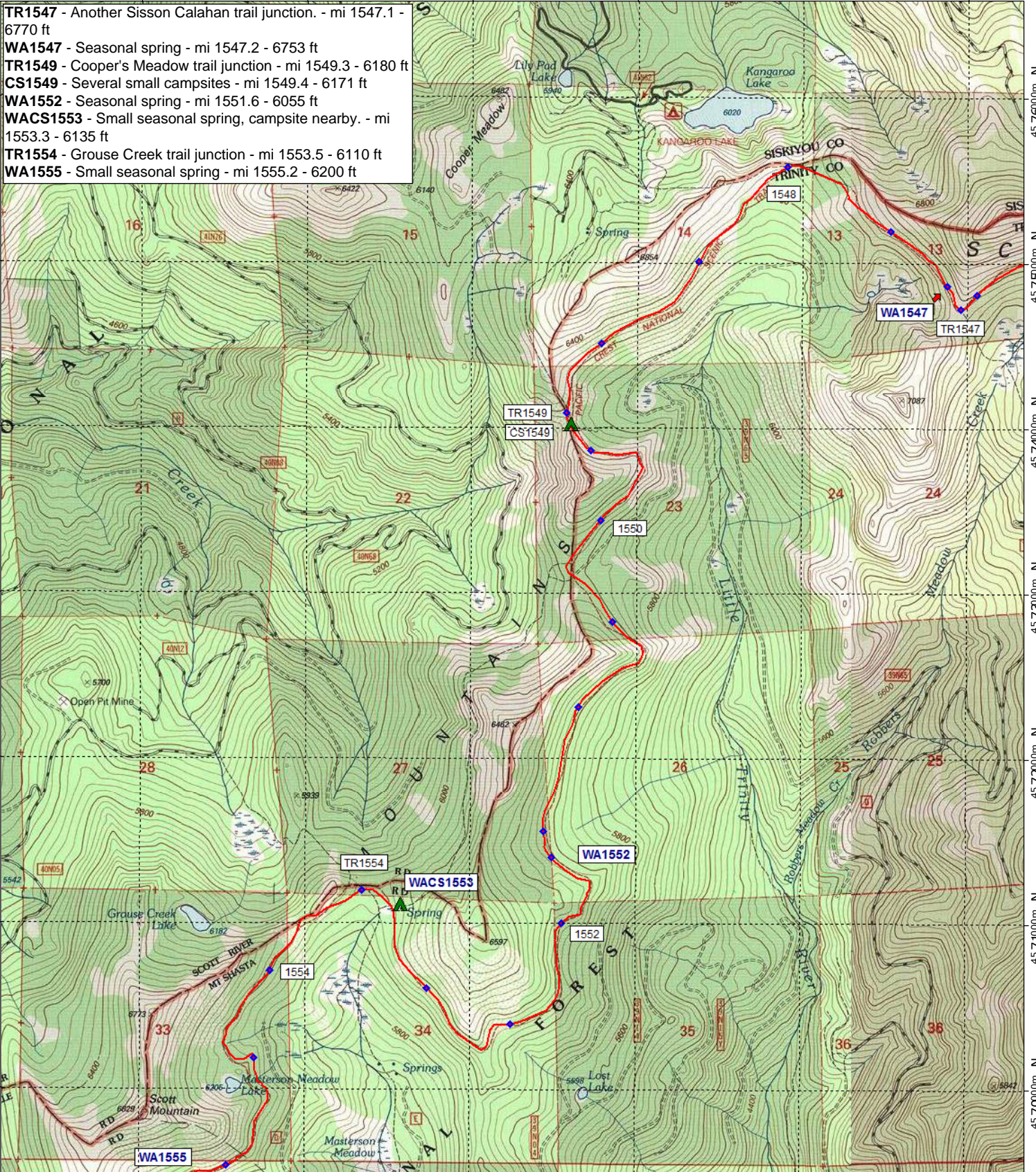
Support PCTA.org
Leave No Trace



contour interval 40 feet
1:31,680 1" = 1/2 mile
Copyright 2015 Halfmile Media
www.pctmap.net



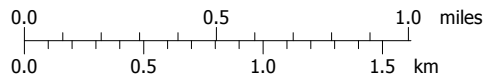
- TR1547** - Another Sisson Calahan trail junction. - mi 1547.1 - 6770 ft
- WA1547** - Seasonal spring - mi 1547.2 - 6753 ft
- TR1549** - Cooper's Meadow trail junction - mi 1549.3 - 6180 ft
- CS1549** - Several small campsites - mi 1549.4 - 6171 ft
- WA1552** - Seasonal spring - mi 1551.6 - 6055 ft
- WACS1553** - Small seasonal spring, campsite nearby. - mi 1553.3 - 6135 ft
- TR1554** - Grouse Creek trail junction - mi 1553.5 - 6110 ft
- WA1555** - Small seasonal spring - mi 1555.2 - 6200 ft



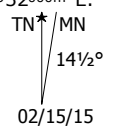
Map created with **TOPONIC** ©2008 National Geographic

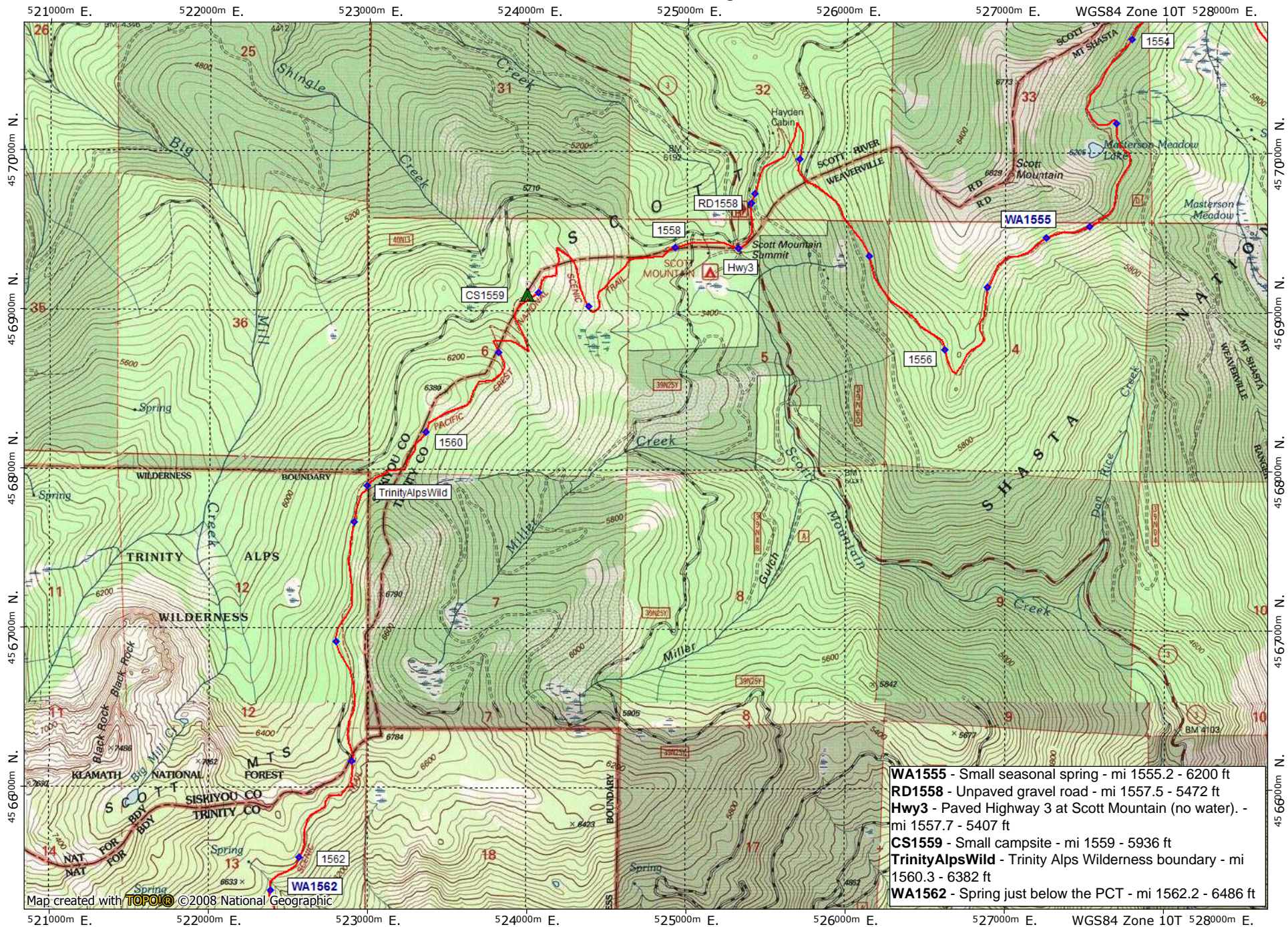


Support PCTA.org
Leave No Trace



contour interval 40 feet
1:31,680 1" = 1/2 mile
Copyright 2015 Halfmile Media
www.pctmap.net





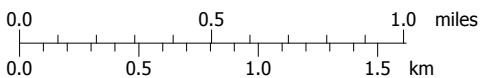
- WA1555** - Small seasonal spring - mi 1555.2 - 6200 ft
- RD1558** - Unpaved gravel road - mi 1557.5 - 5472 ft
- Hwy3** - Paved Highway 3 at Scott Mountain (no water). - mi 1557.7 - 5407 ft
- CS1559** - Small campsite - mi 1559 - 5936 ft
- TrinityAlpsWild** - Trinity Alps Wilderness boundary - mi 1560.3 - 6382 ft
- WA1562** - Spring just below the PCT - mi 1562.2 - 6486 ft

Map created with **TOPO!** ©2008 National Geographic

521000m E. 522000m E. 523000m E. 524000m E. 525000m E. 526000m E. 527000m E. WGS84 Zone 10T 528000m E.

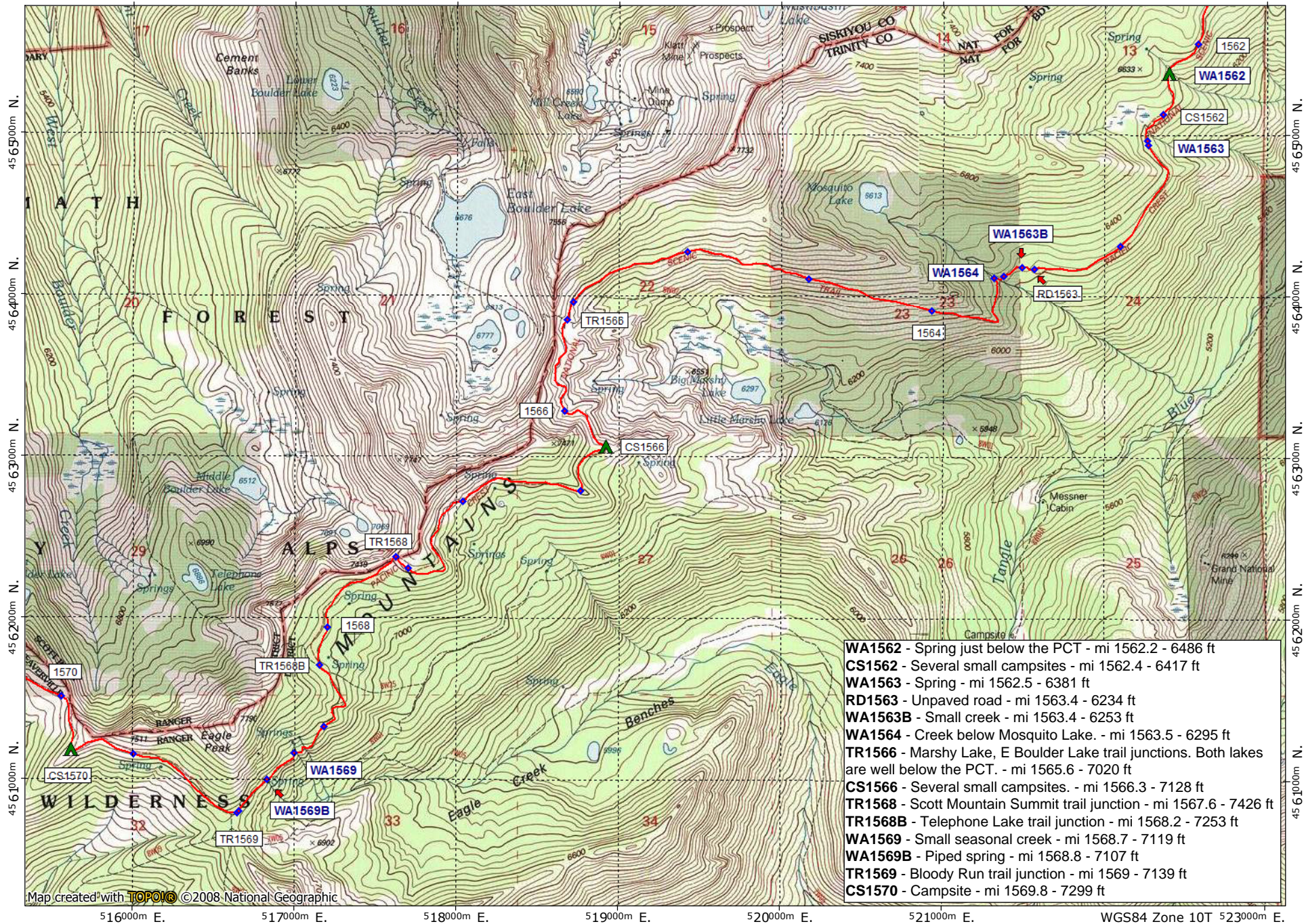


Support PCTA.org
Leave No Trace



contour interval 40 feet
 1:31,680 1" = 1/2 mile
 Copyright 2015 Halfmile Media
 www.pctmap.net

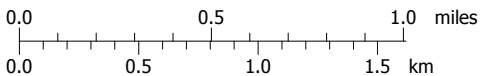
TN ↑ MN
 14½°
 02/15/15



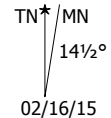
Map created with **TOPOLIC** ©2008 National Geographic



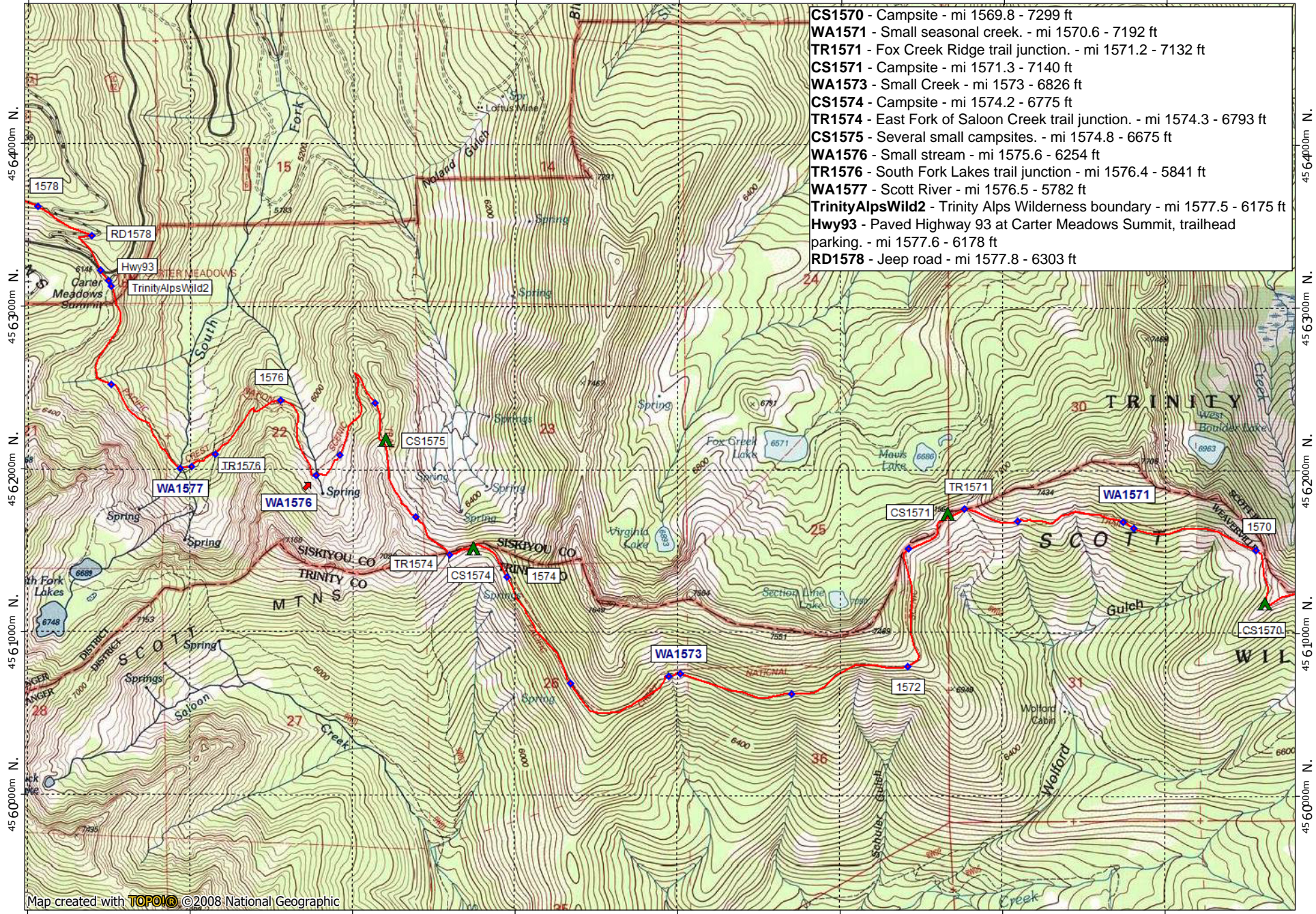
Support PCTA.org
Leave No Trace



contour interval 40 feet
1:31,680 1" = 1/2 mile
Copyright 2015 Halfmile Media
www.pctmap.net



508000m E. 509000m E. 510000m E. 511000m E. 512000m E. 513000m E. 514000m E. WGS84 Zone 10T 515000m E.



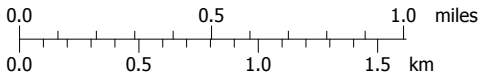
- CS1570** - Campsite - mi 1569.8 - 7299 ft
- WA1571** - Small seasonal creek. - mi 1570.6 - 7192 ft
- TR1571** - Fox Creek Ridge trail junction. - mi 1571.2 - 7132 ft
- CS1571** - Campsite - mi 1571.3 - 7140 ft
- WA1573** - Small Creek - mi 1573 - 6826 ft
- CS1574** - Campsite - mi 1574.2 - 6775 ft
- TR1574** - East Fork of Saloon Creek trail junction. - mi 1574.3 - 6793 ft
- CS1575** - Several small campsites. - mi 1574.8 - 6675 ft
- WA1576** - Small stream - mi 1575.6 - 6254 ft
- TR1576** - South Fork Lakes trail junction - mi 1576.4 - 5841 ft
- WA1577** - Scott River - mi 1576.5 - 5782 ft
- TrinityAlpsWild2** - Trinity Alps Wilderness boundary - mi 1577.5 - 6175 ft
- Hwy93** - Paved Highway 93 at Carter Meadows Summit, trailhead parking. - mi 1577.6 - 6178 ft
- RD1578** - Jeep road - mi 1577.8 - 6303 ft

Map created with **TOPOLIC** ©2008 National Geographic

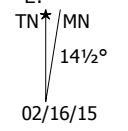
508000m E. 509000m E. 510000m E. 511000m E. 512000m E. 513000m E. 514000m E. WGS84 Zone 10T 515000m E.

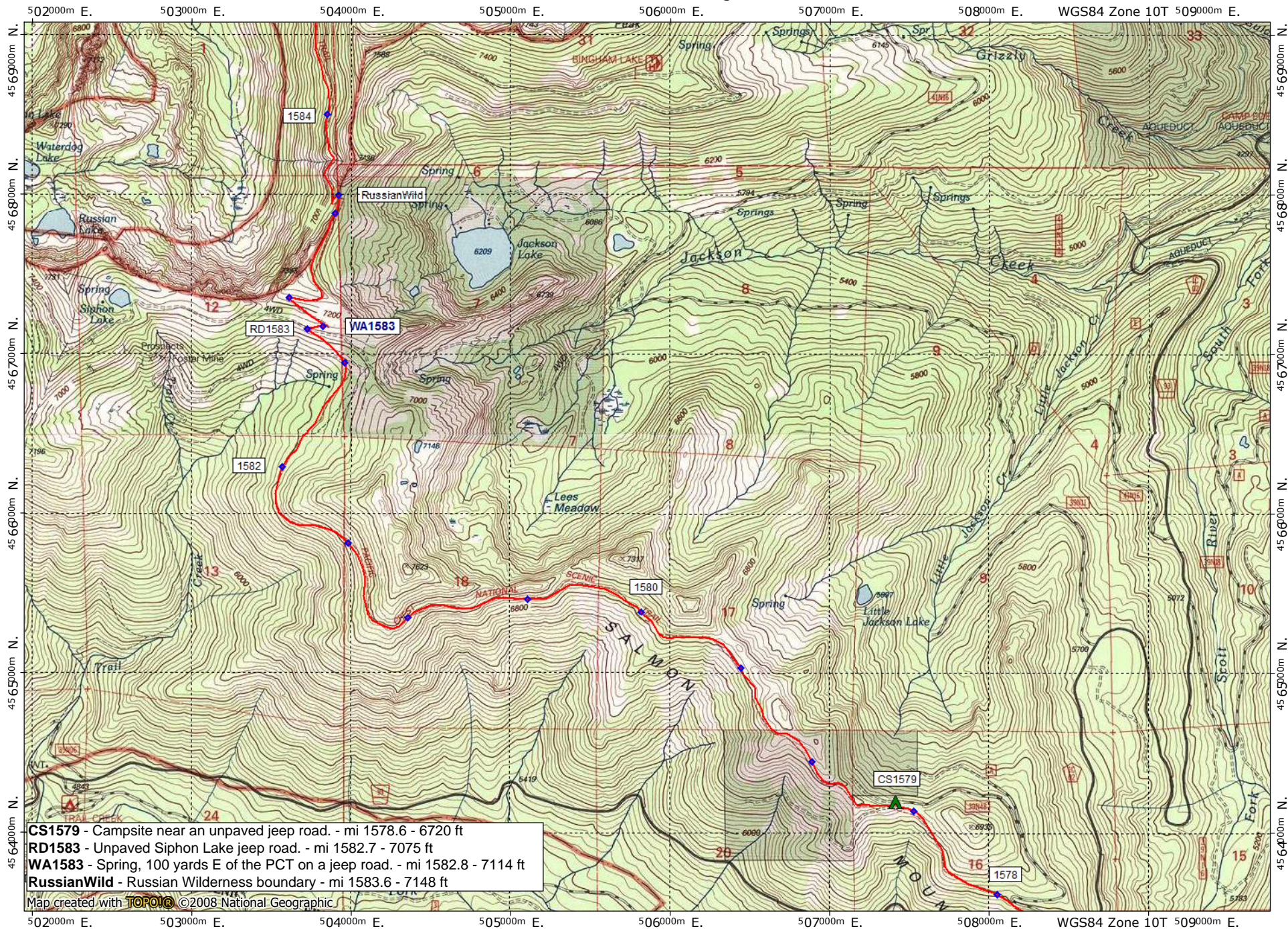


Support PCTA.org
Leave No Trace



contour interval 40 feet
1:31,680 1" = 1/2 mile
Copyright 2015 Halfmile Media
www.pctmap.net





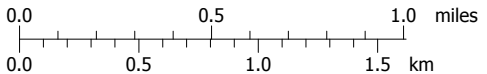
CS1579 - Campsite near an unpaved jeep road. - mi 1578.6 - 6720 ft
RD1583 - Unpaved Siphon Lake jeep road. - mi 1582.7 - 7075 ft
WA1583 - Spring, 100 yards E of the PCT on a jeep road. - mi 1582.8 - 7114 ft
RussianWild - Russian Wilderness boundary - mi 1583.6 - 7148 ft

Map created with **TOPOM** ©2008 National Geographic

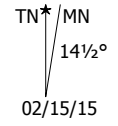
502000m E. 503000m E. 504000m E. 505000m E. 506000m E. 507000m E. 508000m E. 509000m E. WGS84 Zone 10T 4564000m N. 4565000m N. 4566000m N. 4567000m N. 4568000m N. 4569000m N.



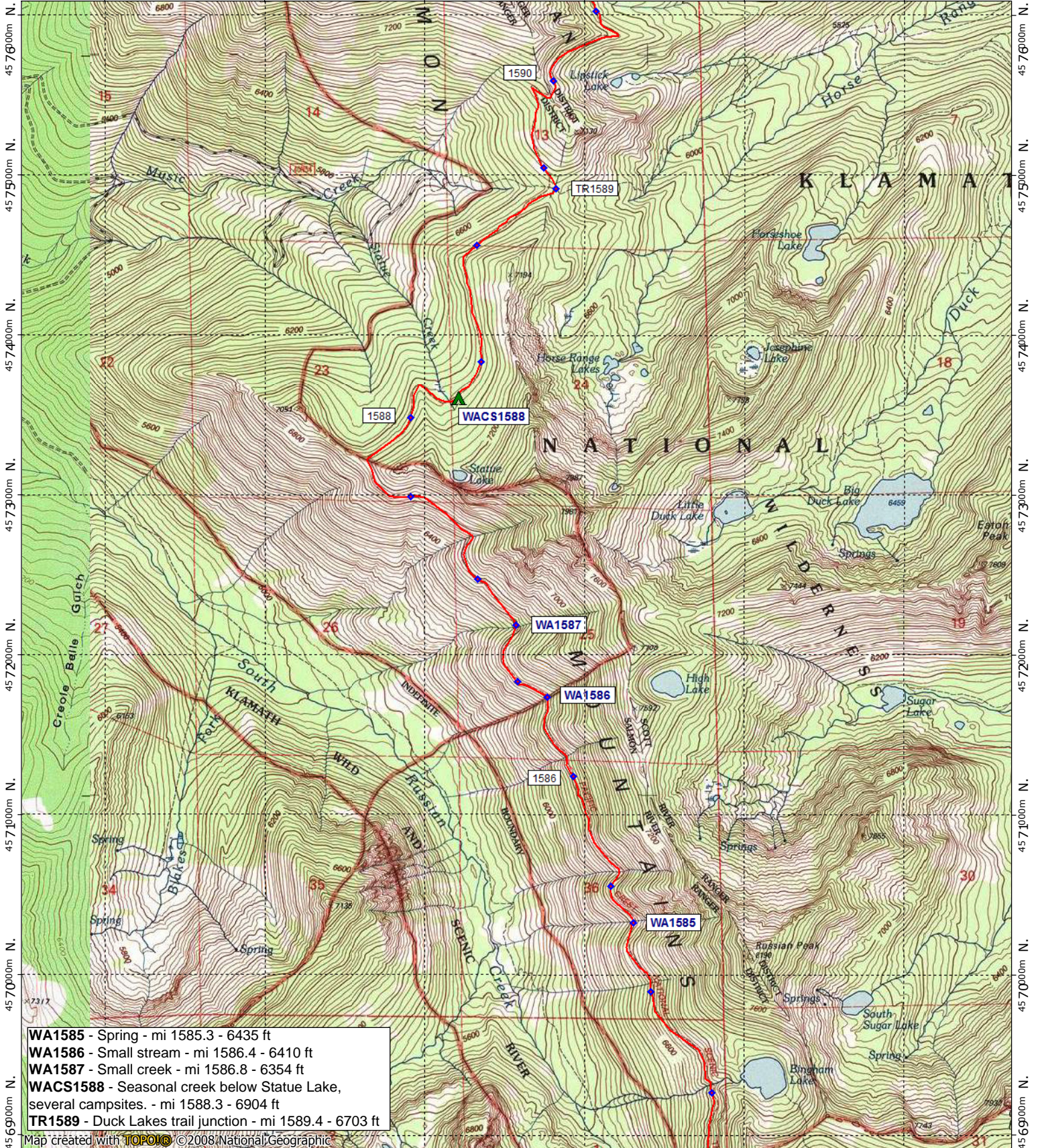
Support PCTA.org
 Leave No Trace



contour interval 40 feet
 1:31,680 1" = 1/2 mile
 Copyright 2015 Halfmile Media
www.pctmap.net



500000m E. 501000m E. 502000m E. 503000m E. 504000m E. WGS84 Zone 10T 505000m E.



4576000m N. 4575000m N. 4574000m N. 4573000m N. 4572000m N. 4571000m N. 4570000m N. 4569000m N.

4576000m N. 4575000m N. 4574000m N. 4573000m N. 4572000m N. 4571000m N. 4570000m N. 4569000m N.

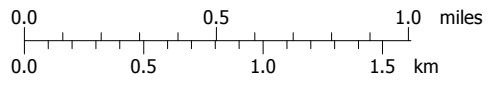
- WA1585** - Spring - mi 1585.3 - 6435 ft
- WA1586** - Small stream - mi 1586.4 - 6410 ft
- WA1587** - Small creek - mi 1586.8 - 6354 ft
- WACS1588** - Seasonal creek below Statue Lake, several campsites. - mi 1588.3 - 6904 ft
- TR1589** - Duck Lakes trail junction - mi 1589.4 - 6703 ft

Map created with **TOPOIC** ©2008 National Geographic

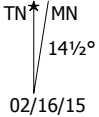
500000m E. 501000m E. 502000m E. 503000m E. 504000m E. WGS84 Zone 10T 505000m E.

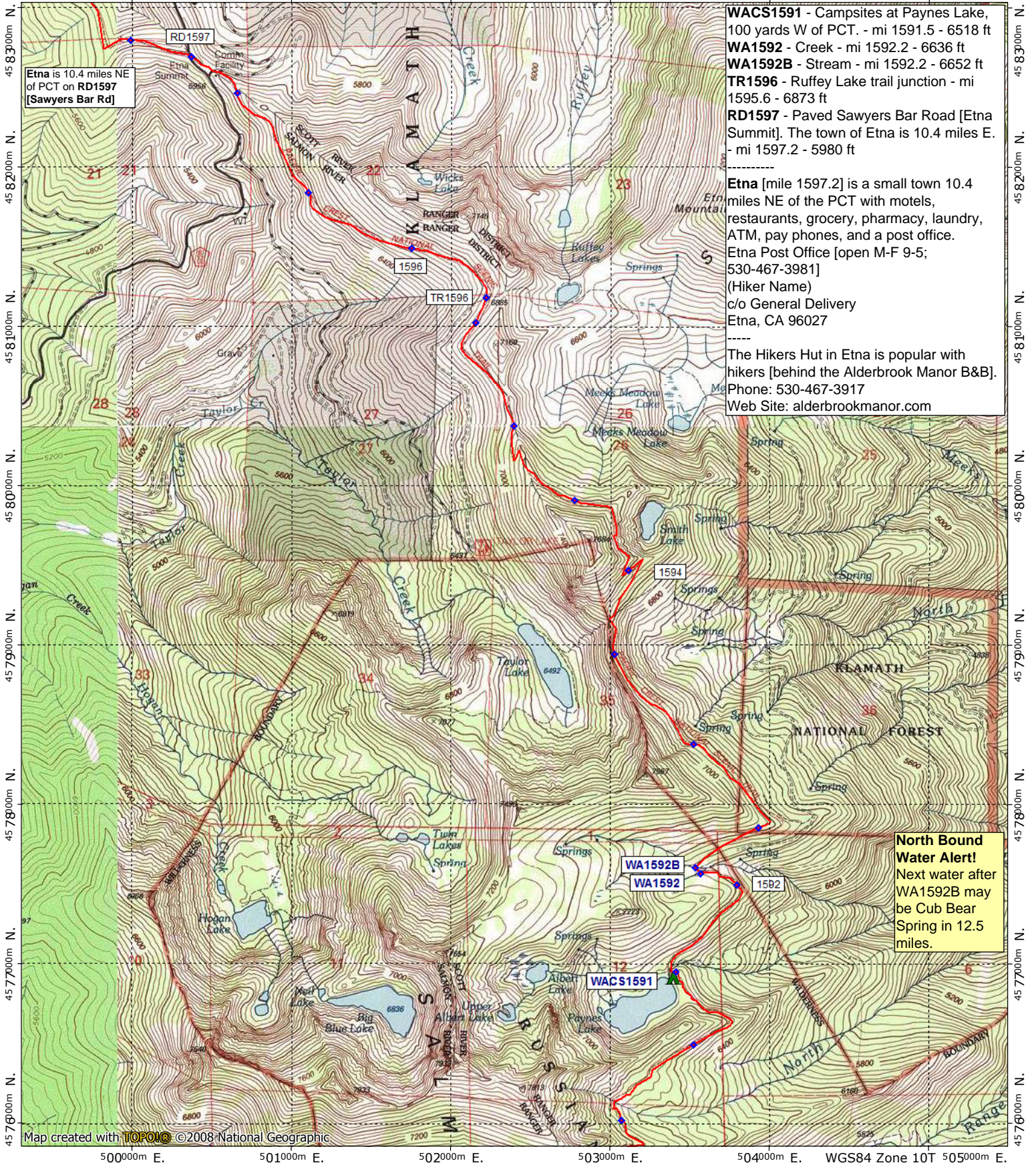


Support PCTA.org
Leave No Trace



contour interval 40 feet
 1:31,680 1" = 1/2 mile
 Copyright 2015 Halfmile Media
 www.pctmap.net





Etna is 10.4 miles NE of PCT on RD1597 [Sawyers Bar Rd]

WACS1591 - Campsites at Paynes Lake, 100 yards W of PCT. - mi 1591.5 - 6518 ft
WA1592 - Creek - mi 1592.2 - 6636 ft
WA1592B - Stream - mi 1592.2 - 6652 ft
TR1596 - Ruffey Lake trail junction - mi 1595.6 - 6873 ft
RD1597 - Paved Sawyers Bar Road [Etna Summit]. The town of Etna is 10.4 miles E. - mi 1597.2 - 5980 ft

Etna [mile 1597.2] is a small town 10.4 miles NE of the PCT with motels, restaurants, grocery, pharmacy, laundry, ATM, pay phones, and a post office. Etna Post Office [open M-F 9-5; 530-467-3981] (Hiker Name) c/o General Delivery Etna, CA 96027

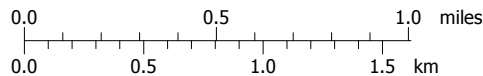
 The Hikers Hut in Etna is popular with hikers [behind the Alderbrook Manor B&B]. Phone: 530-467-3917 Web Site: alderbrookmanor.com

North Bound Water Alert!
 Next water after WA1592B may be Cub Bear Spring in 12.5 miles.

Map created with **TOPOMAP** ©2008 National Geographic



Support PCTA.org
 Leave No Trace



contour interval 40 feet
 1:31,680 1" = 1/2 mile
 Copyright 2017 Halfmile Media
 www.pctmap.net

