

- WACS1416** - Burney Falls State Park PCT trail camp, outhouse, picnic tables, outhouse, trash cans. - mi 1415.9 - 2972 ft
- TR1417** - Burney Falls trail junction - mi 1416.5 - 2944 ft
- BurneyFallsSP** - Burney Falls State Park, store, campground, water, showers, laundry. - mi 1416.5 - 2930 ft
- RD1417** - Unpaved road - mi 1417.2 - 2905 ft
- RD1417B** - Unpaved road - mi 1417.4 - 2899 ft
- RD1418** - Paved Clark Creek Road, low voltage power line nearby. - mi 1417.5 - 2895 ft
- BrittonDam** - PCT crosses Lake Britton Dam on a paved road. - mi 1418.4 - 2706 ft
- RD1418B** - PCT departs the paved road after crossing the Lake Britton Dam. - mi 1418.4 - 2782 ft
- RD1419** - PCT joins a paved road. - mi 1418.6 - 2824 ft
- RD1419B** - PCT departs the paved road. - mi 1418.6 - 2835 ft
- RD1419C** - Unpaved road - mi 1418.8 - 2946 ft
- RD1419D** - Unpaved road - mi 1419.1 - 2978 ft
- WACS1422** - Cross Rock Creek on a wood bridge. Good water, but only a few small campsites nearby. - mi 1422 - 2971 ft
- CS1422** - Several campsites - mi 1422.2 - 3056 ft
- RD1422** - Unpaved road - mi 1422.3 - 3102 ft
- RD1423** - Unpaved road - mi 1422.5 - 3174 ft

CA Section O - 82.2 miles
 Start - Burney Falls State Park, mile 1416.5
 End - Hwy 5 [near Castle Crag], mile 1498.7
 Elevation Gain +17,969'
 Elevation Loss -18,764'
 Elevation Change -795'

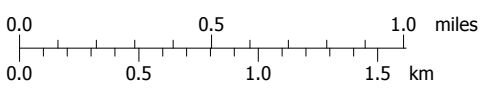
These maps are provided as a free service to PCT hikers. I believe the information is accurate but they may contain errors. The maps are distributed in the hope that they will be useful, but WITHOUT ANY WARRANTY; without even the implied warranty of MERCHANTABILITY or FITNESS FOR A PARTICULAR PURPOSE.
 -Halfmile

South Bound Water Alert!
 Next water after Burney Falls State Park may be the lake in 11.3 miles.

Map created with **TOPOLIC** ©2008 National Geographic



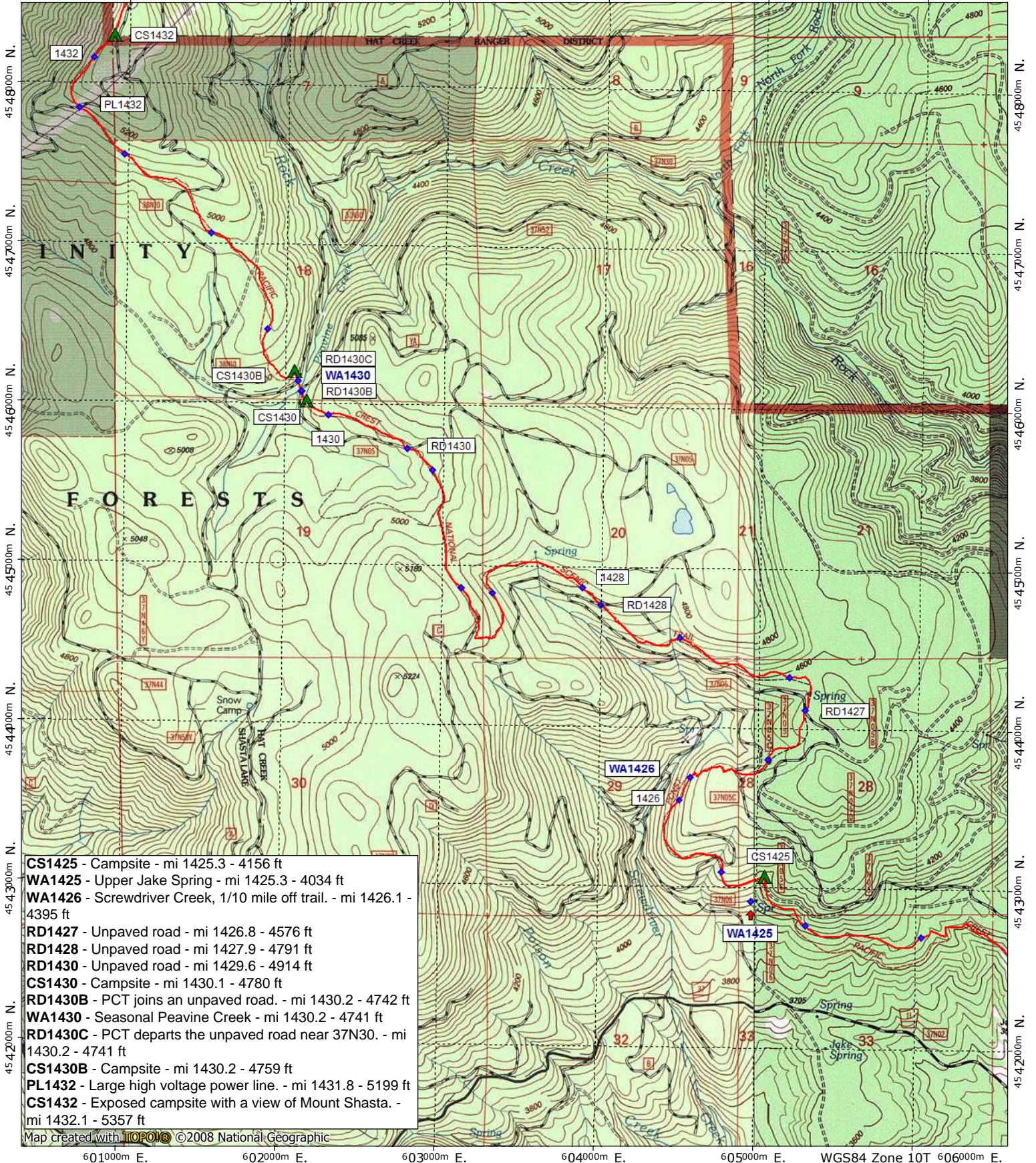
Support PCTA.org
 Leave No Trace



contour interval 40 feet
 1:31,680 1" = 1/2 mile
 Copyright 2015 Halfmile Media
 www.pctmap.net

TN MN
 14 1/2°
 02/15/15

601000m E. 602000m E. 603000m E. 604000m E. 605000m E. WGS84 Zone 10T 606000m E.



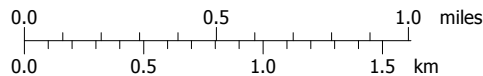
- CS1425** - Campsite - mi 1425.3 - 4156 ft
- WA1425** - Upper Jake Spring - mi 1425.3 - 4034 ft
- WA1426** - Screwdriver Creek, 1/10 mile off trail. - mi 1426.1 - 4395 ft
- RD1427** - Unpaved road - mi 1426.8 - 4576 ft
- RD1428** - Unpaved road - mi 1427.9 - 4791 ft
- RD1430** - Unpaved road - mi 1429.6 - 4914 ft
- CS1430** - Campsite - mi 1430.1 - 4780 ft
- RD1430B** - PCT joins an unpaved road. - mi 1430.2 - 4742 ft
- WA1430** - Seasonal Peavine Creek - mi 1430.2 - 4741 ft
- RD1430C** - PCT departs the unpaved road near 37N30. - mi 1430.2 - 4741 ft
- CS1430B** - Campsite - mi 1430.2 - 4759 ft
- PL1432** - Large high voltage power line. - mi 1431.8 - 5199 ft
- CS1432** - Exposed campsite with a view of Mount Shasta. - mi 1432.1 - 5357 ft

Map created with **TOPOClik** ©2008 National Geographic

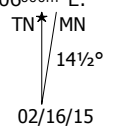
601000m E. 602000m E. 603000m E. 604000m E. 605000m E. WGS84 Zone 10T 606000m E.

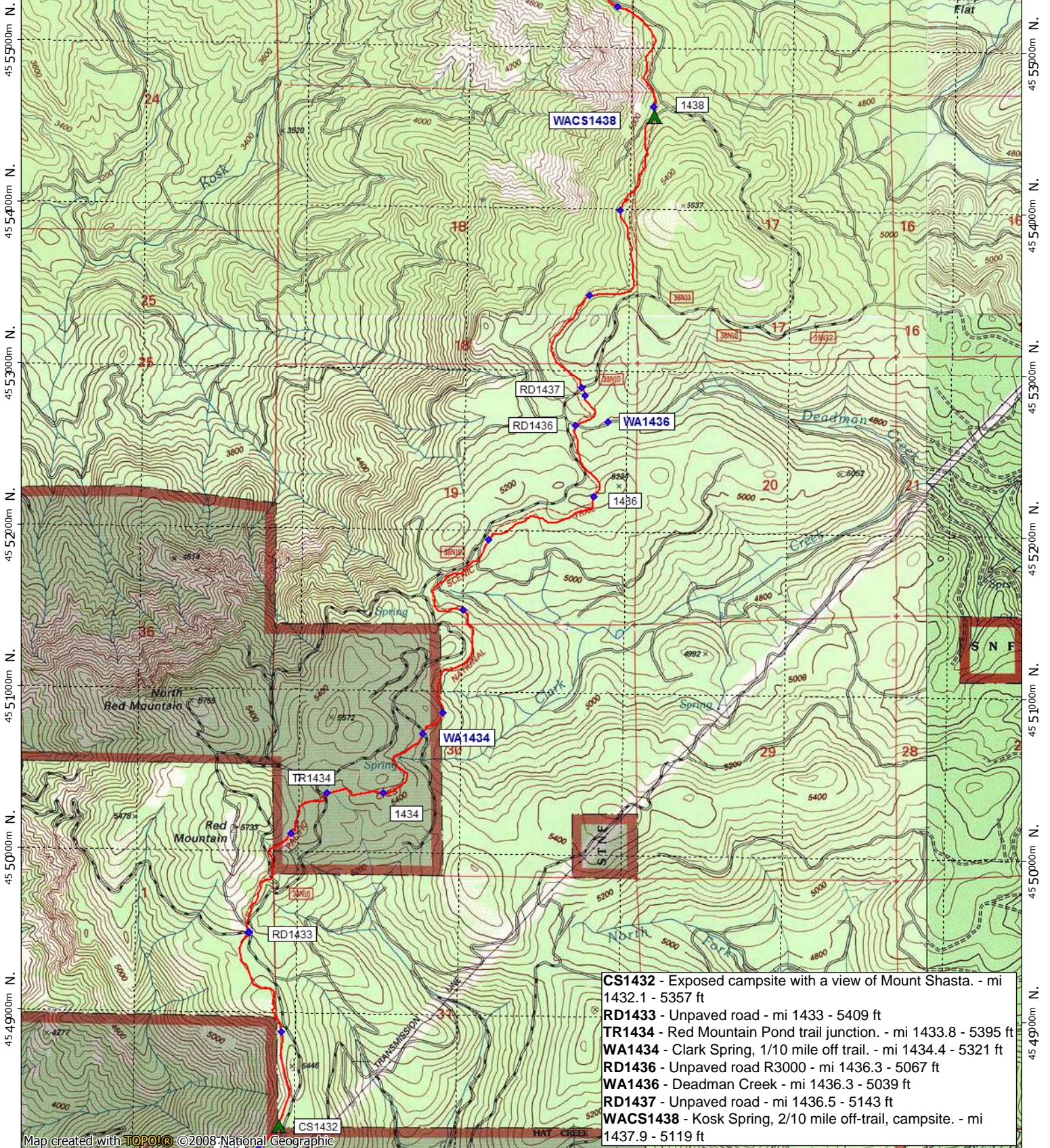


Support PCTA.org
Leave No Trace



contour interval 40 feet
1:31,680 1" = 1/2 mile
Copyright 2015 Halfmile Media
www.pctmap.net



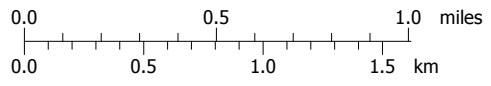


- CS1432** - Exposed campsite with a view of Mount Shasta. - mi 1432.1 - 5357 ft
- RD1433** - Unpaved road - mi 1433 - 5409 ft
- TR1434** - Red Mountain Pond trail junction. - mi 1433.8 - 5395 ft
- WA1434** - Clark Spring, 1/10 mile off trail. - mi 1434.4 - 5321 ft
- RD1436** - Unpaved road R3000 - mi 1436.3 - 5067 ft
- WA1436** - Deadman Creek - mi 1436.3 - 5039 ft
- RD1437** - Unpaved road - mi 1436.5 - 5143 ft
- WACS1438** - Kosk Spring, 2/10 mile off-trail, campsite. - mi 1437.9 - 5119 ft

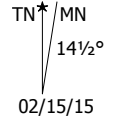
Map created with **Topo!** ©2008 National Geographic

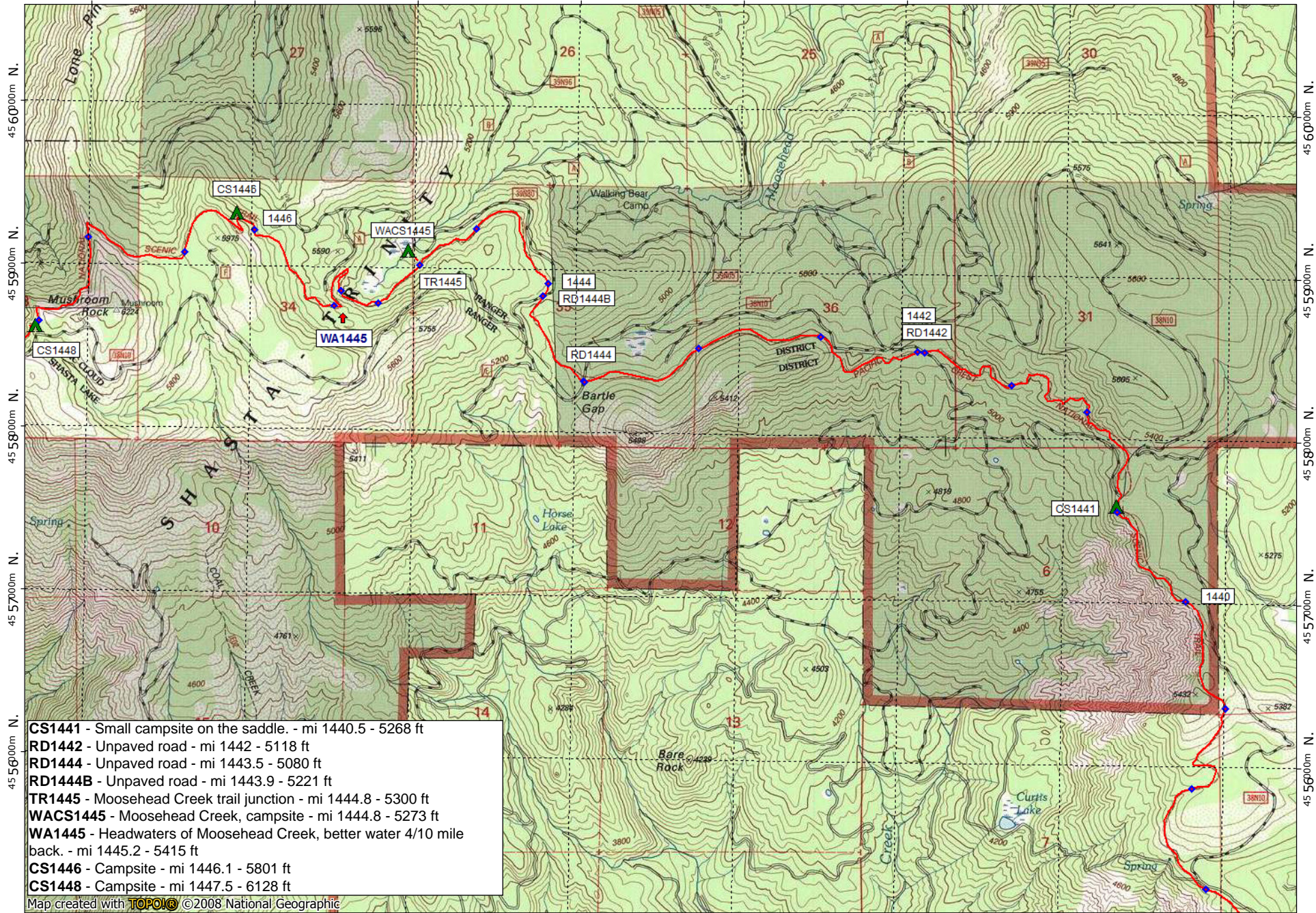


Support PCTA.org
Leave No Trace

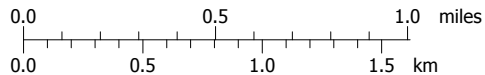


contour interval 40 feet
 1:31,680 1" = 1/2 mile
 Copyright 2015 Halfmile Media
 www.pctmap.net

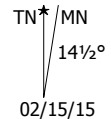




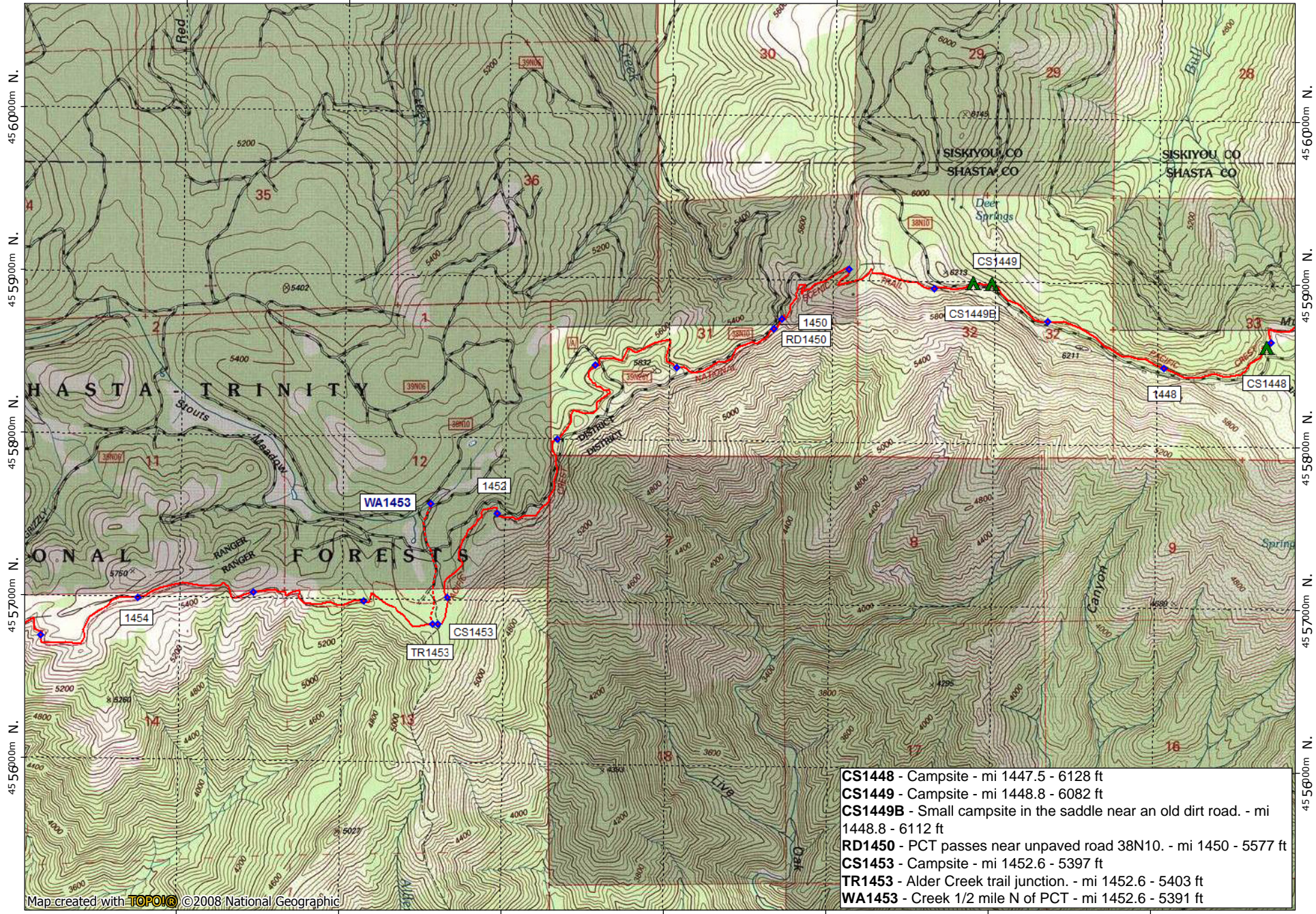
Support PCTA.org
Leave No Trace



contour interval 40 feet
1:31,680 1" = 1/2 mile
Copyright 2015 Halfmile Media
www.pctmap.net



589000m E. 590000m E. 591000m E. 592000m E. 593000m E. 594000m E. WGS84 Zone 10T 595000m E.

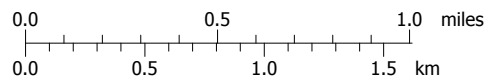


- CS1448** - Campsite - mi 1447.5 - 6128 ft
- CS1449** - Campsite - mi 1448.8 - 6082 ft
- CS1449B** - Small campsite in the saddle near an old dirt road. - mi 1448.8 - 6112 ft
- RD1450** - PCT passes near unpaved road 38N10. - mi 1450 - 5577 ft
- CS1453** - Campsite - mi 1452.6 - 5397 ft
- TR1453** - Alder Creek trail junction. - mi 1452.6 - 5403 ft
- WA1453** - Creek 1/2 mile N of PCT - mi 1452.6 - 5391 ft

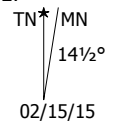
Map created with **TOPOLIC** ©2008 National Geographic



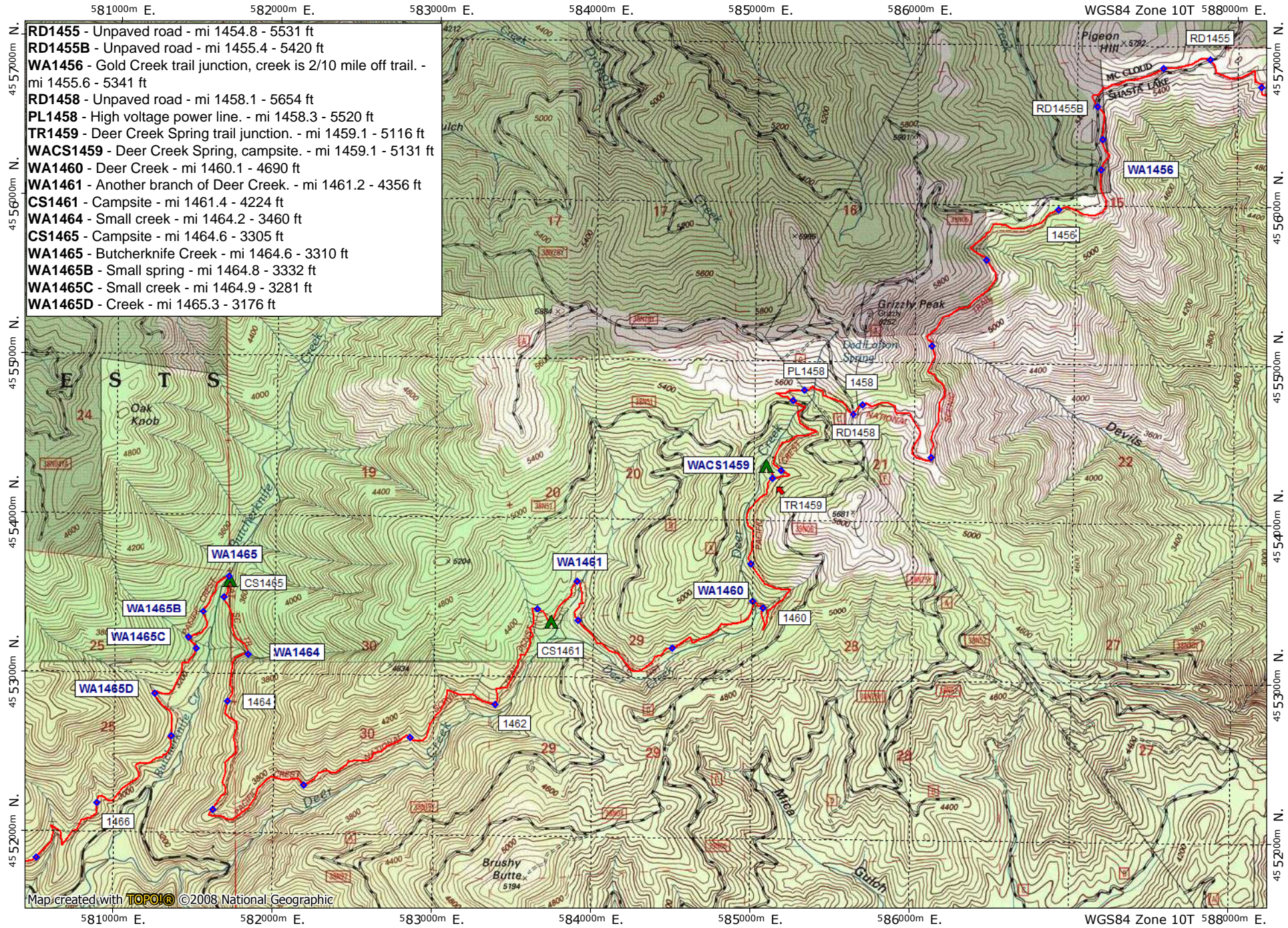
Support PCTA.org
Leave No Trace



contour interval 40 feet
1:31,680 1" = 1/2 mile
Copyright 2015 Halfmile Media
www.pctmap.net



02/15/15

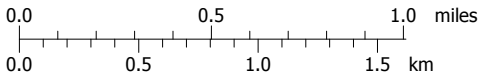


- RD1455 - Unpaved road - mi 1454.8 - 5531 ft
- RD1455B - Unpaved road - mi 1455.4 - 5420 ft
- WA1456 - Gold Creek trail junction, creek is 2/10 mile off trail. - mi 1455.6 - 5341 ft
- RD1458 - Unpaved road - mi 1458.1 - 5654 ft
- PL1458 - High voltage power line. - mi 1458.3 - 5520 ft
- TR1459 - Deer Creek Spring trail junction. - mi 1459.1 - 5116 ft
- WACS1459 - Deer Creek Spring, campsite. - mi 1459.1 - 5131 ft
- WA1460 - Deer Creek - mi 1460.1 - 4690 ft
- WA1461 - Another branch of Deer Creek. - mi 1461.2 - 4356 ft
- CS1461 - Campsite - mi 1461.4 - 4224 ft
- WA1464 - Small creek - mi 1464.2 - 3460 ft
- CS1465 - Campsite - mi 1464.6 - 3305 ft
- WA1465 - Butcherknife Creek - mi 1464.6 - 3310 ft
- WA1465B - Small spring - mi 1464.8 - 3332 ft
- WA1465C - Small creek - mi 1464.9 - 3281 ft
- WA1465D - Creek - mi 1465.3 - 3176 ft

Map created with **TOPOC!** ©2008 National Geographic



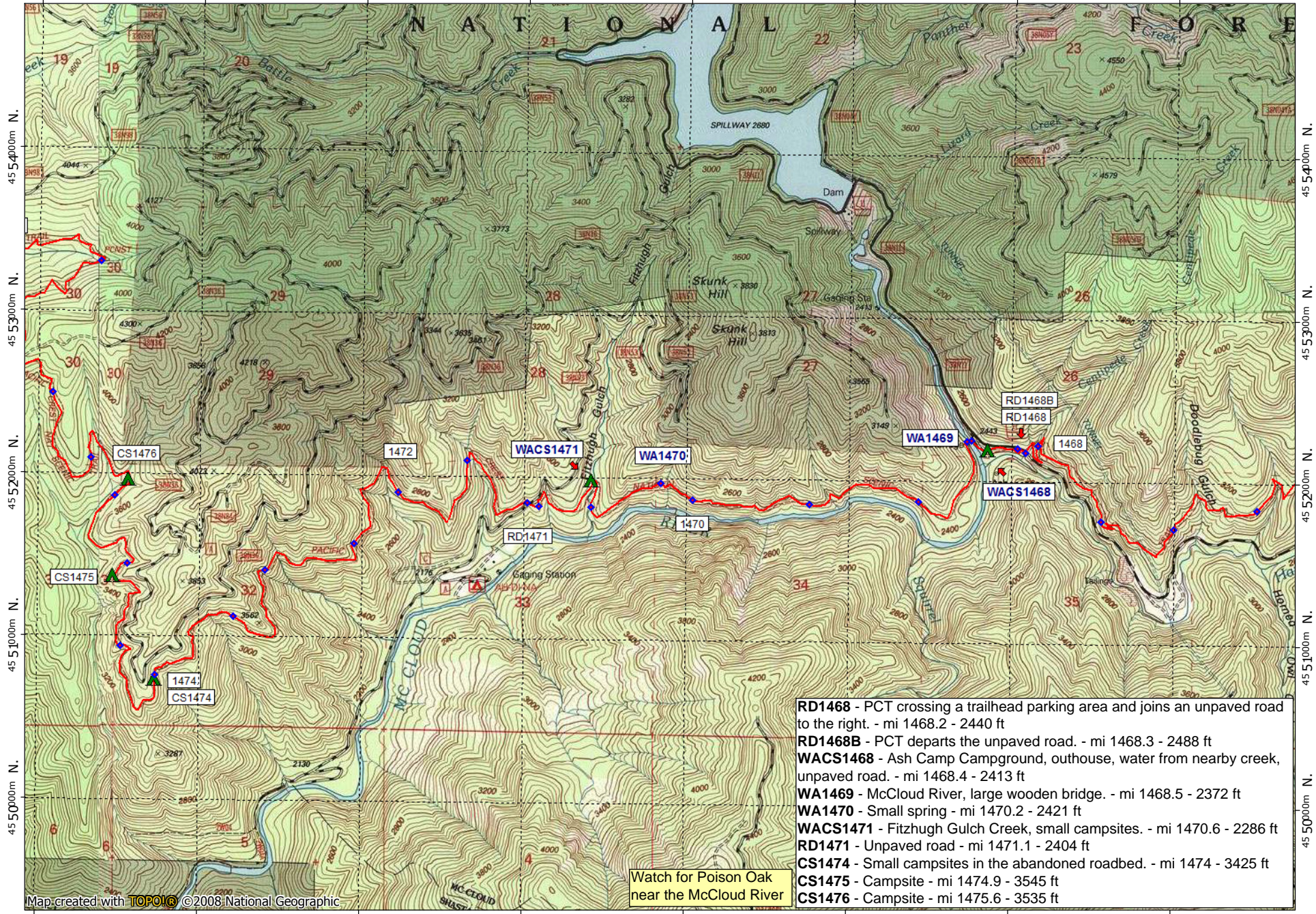
Support PCTA.org
Leave No Trace



contour interval 40 feet
1:31,680 1" = 1/2 mile
Copyright 2015 Halfmile Media
www.pctmap.net

TN MN
14 1/2°
02/16/15

573000m E. 574000m E. 575000m E. 576000m E. 577000m E. 578000m E. 579000m E. WGS84 Zone 10T 580000m E.



Map created with **TOPO!** ©2008 National Geographic

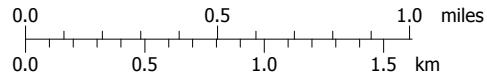
Watch for Poison Oak near the McCloud River

- RD1468** - PCT crossing a trailhead parking area and joins an unpaved road to the right. - mi 1468.2 - 2440 ft
- RD1468B** - PCT departs the unpaved road. - mi 1468.3 - 2488 ft
- WACS1468** - Ash Camp Campground, outhouse, water from nearby creek, unpaved road. - mi 1468.4 - 2413 ft
- WA1469** - McCloud River, large wooden bridge. - mi 1468.5 - 2372 ft
- WA1470** - Small spring - mi 1470.2 - 2421 ft
- WACS1471** - Fitzhugh Gulch Creek, small campsites. - mi 1470.6 - 2286 ft
- RD1471** - Unpaved road - mi 1471.1 - 2404 ft
- CS1474** - Small campsites in the abandoned roadbed. - mi 1474 - 3425 ft
- CS1475** - Campsite - mi 1474.9 - 3545 ft
- CS1476** - Campsite - mi 1475.6 - 3535 ft

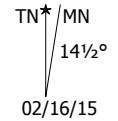
573000m E. 574000m E. 575000m E. 576000m E. 577000m E. 578000m E. 579000m E. WGS84 Zone 10T 580000m E.



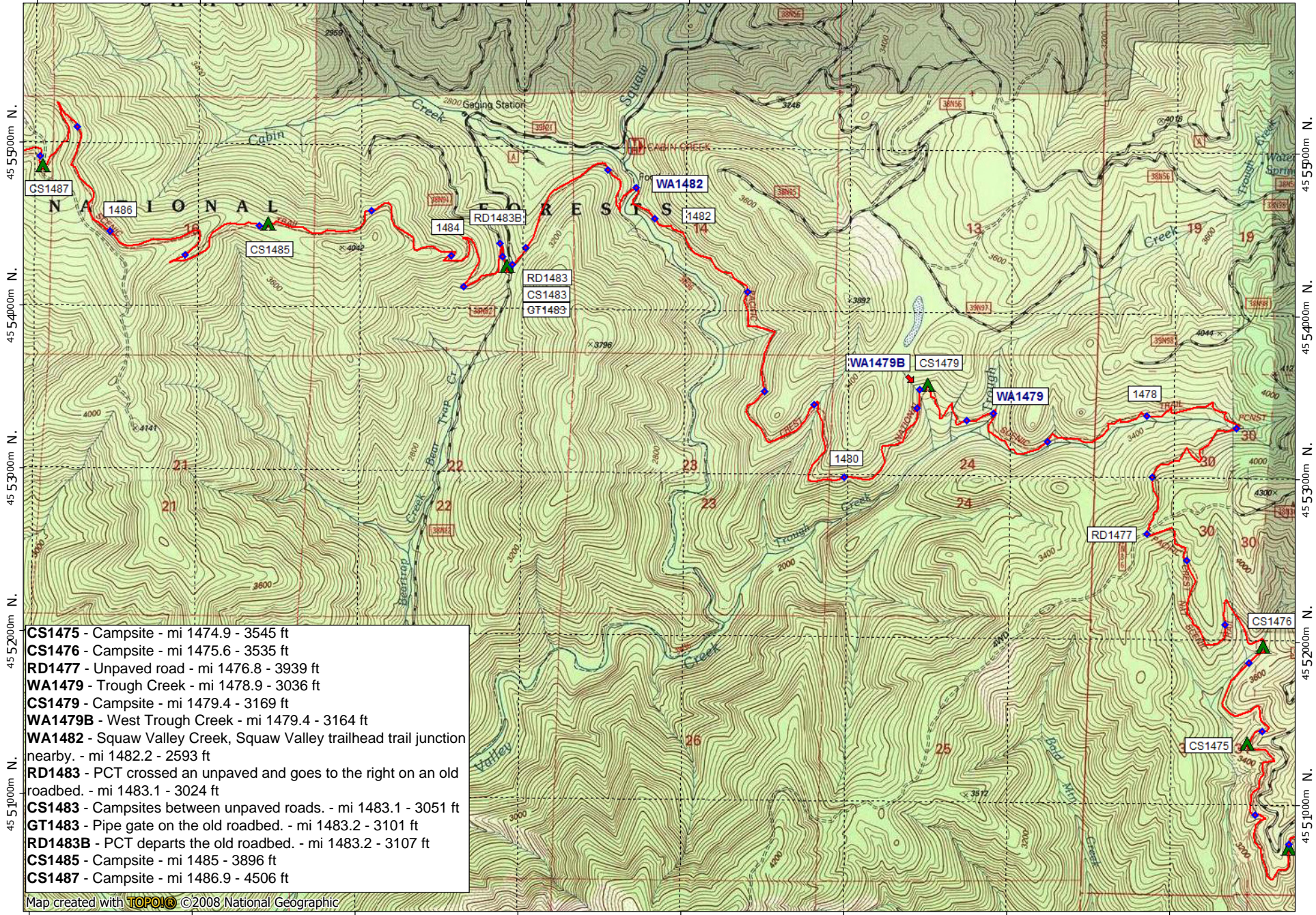
Support PCTA.org
Leave No Trace



contour interval 40 feet
1:31,680 1" = 1/2 mile
Copyright 2015 Halfmile Media
www.pctmap.net



566000m E. 567000m E. 568000m E. 569000m E. 570000m E. 571000m E. 572000m E. WGS84 Zone 10T 573000m E.



45 51900m N.
45 5400m N.
45 5300m N.
45 5200m N.
45 5100m N.

45 51900m N.
45 5400m N.
45 5300m N.
45 5200m N.
45 5100m N.

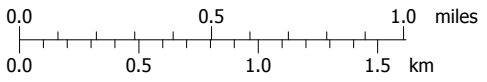
- CS1475** - Campsite - mi 1474.9 - 3545 ft
- CS1476** - Campsite - mi 1475.6 - 3535 ft
- RD1477** - Unpaved road - mi 1476.8 - 3939 ft
- WA1479** - Trough Creek - mi 1478.9 - 3036 ft
- CS1479** - Campsite - mi 1479.4 - 3169 ft
- WA1479B** - West Trough Creek - mi 1479.4 - 3164 ft
- WA1482** - Squaw Valley Creek, Squaw Valley trailhead trail junction nearby. - mi 1482.2 - 2593 ft
- RD1483** - PCT crossed an unpaved and goes to the right on an old roadbed. - mi 1483.1 - 3024 ft
- CS1483** - Campsites between unpaved roads. - mi 1483.1 - 3051 ft
- GT1483** - Pipe gate on the old roadbed. - mi 1483.2 - 3101 ft
- RD1483B** - PCT departs the old roadbed. - mi 1483.2 - 3107 ft
- CS1485** - Campsite - mi 1485 - 3896 ft
- CS1487** - Campsite - mi 1486.9 - 4506 ft

Map created with **TOPOM!** ©2008 National Geographic

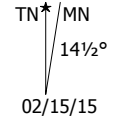
566000m E. 567000m E. 568000m E. 569000m E. 570000m E. 571000m E. 572000m E. WGS84 Zone 10T 573000m E.



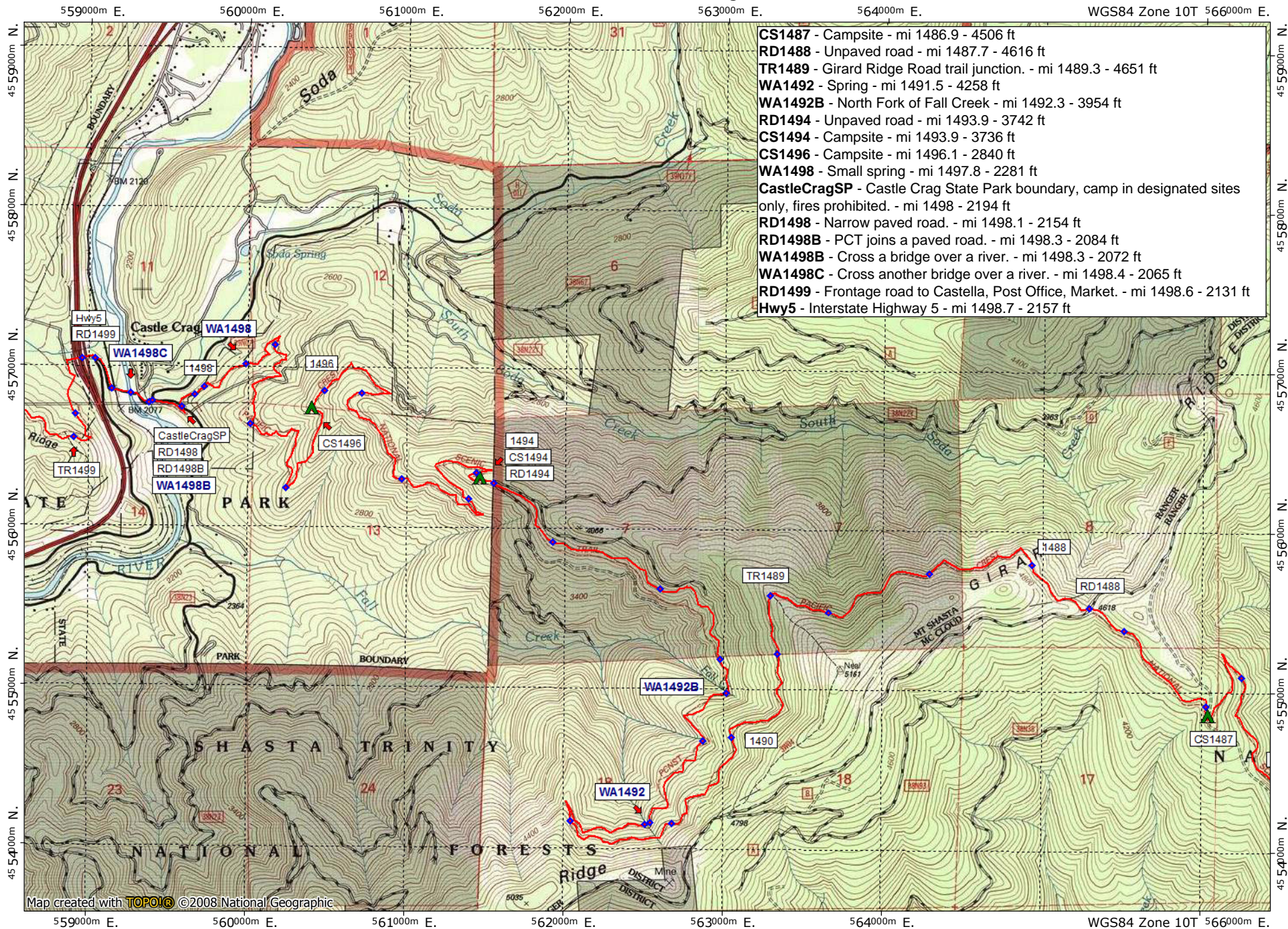
Support PCTA.org
Leave No Trace



contour interval 40 feet
1:31,680 1" = 1/2 mile
Copyright 2015 Halfmile Media
www.pctmap.net



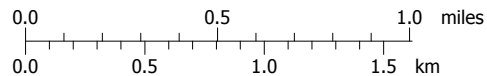
02/15/15



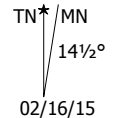
Map created with **TOPO!** ©2008 National Geographic



Support PCTA.org
Leave No Trace



contour interval 40 feet
1:31,680 1" = 1/2 mile
Copyright 2015 Halfmile Media
www.pctmap.net



02/16/15

California Section O - Castella-Dunsmuir Area

556000m E. 557000m E. 558000m E. 559000m E. 560000m E. WGS84 Zone 10T 562000m E.

Castella [mile 1498.7] is a very small town and nearby state park 2 miles SW of the PCT, w/ the Ammirati Market, state park campground w/ \$5 hiker campsites, coin showers, pay phone and a post office.
 Ammirati's Market is next to the post office, [open every day 8-9; 530-235-2676] and accepts hiker resupply packages sent by UPS, FedEx or USPS. Include ETA on your package.
 USPS address:
 (Hiker Name)
 c/o Ammirati's Market
 PO Box 90
 Castella, CA 96017

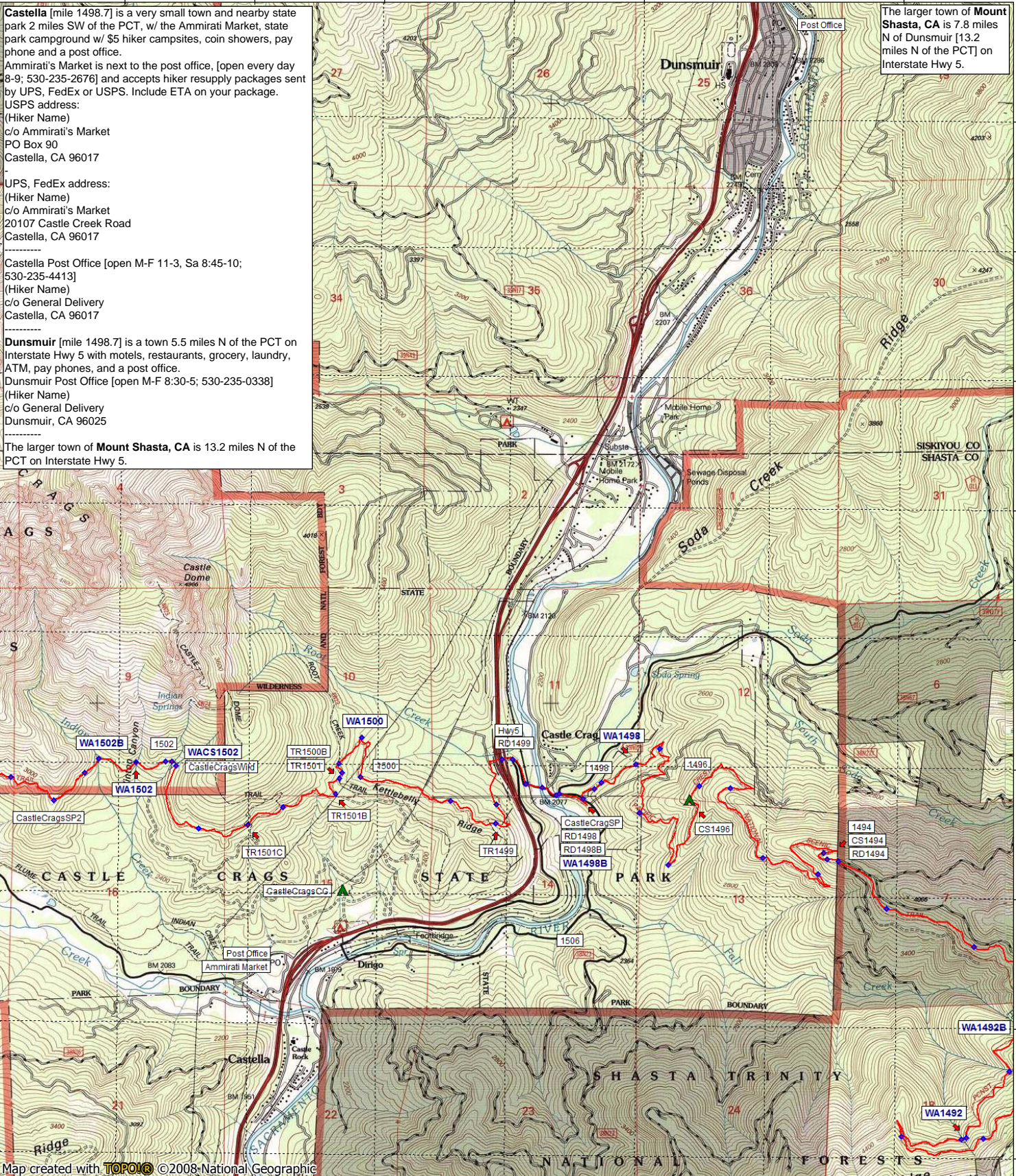
UPS, FedEx address:
 (Hiker Name)
 c/o Ammirati's Market
 20107 Castle Creek Road
 Castella, CA 96017

Castella Post Office [open M-F 11-3, Sa 8:45-10; 530-235-4413]
 (Hiker Name)
 c/o General Delivery
 Castella, CA 96017

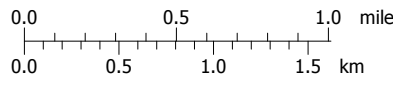
Dunsmuir [mile 1498.7] is a town 5.5 miles N of the PCT on Interstate Hwy 5 with motels, restaurants, grocery, laundry, ATM, pay phones, and a post office.
 Dunsmuir Post Office [open M-F 8:30-5; 530-235-0338]
 (Hiker Name)
 c/o General Delivery
 Dunsmuir, CA 96025

The larger town of **Mount Shasta, CA** is 13.2 miles N of the PCT on Interstate Hwy 5.

The larger town of **Mount Shasta, CA** is 7.8 miles N of Dunsmuir [13.2 miles N of the PCT] on Interstate Hwy 5.



Map created with **TOPOiQ** ©2008-National Geographic



contour interval 40 feet
 1:31,680 1" = 1/2 mile
 Copyright 2016 Halfmile Media
 www.pctmap.net

TN ↑ MN
 14½°
 02/15/15

