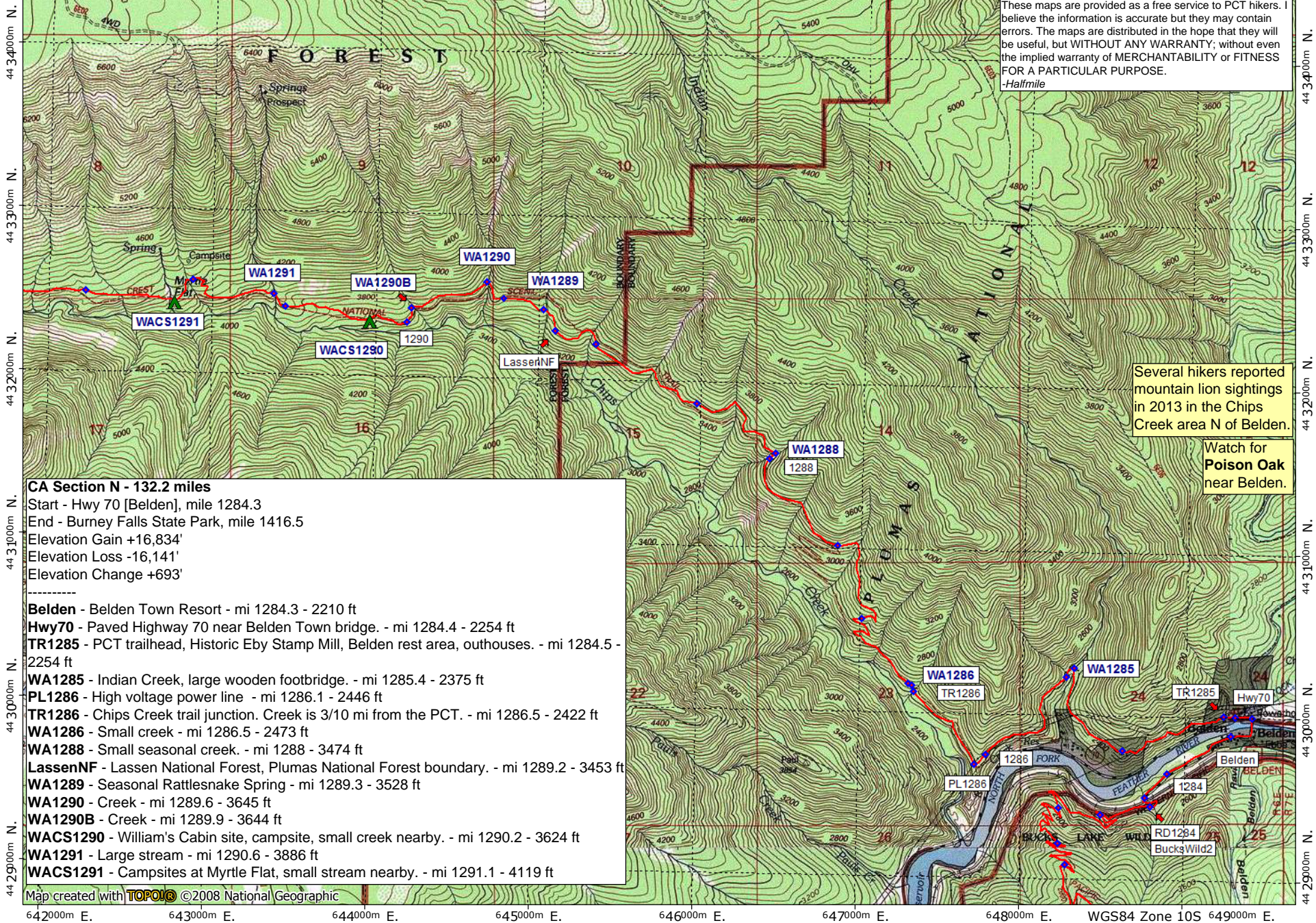


642000m E. 643000m E. 644000m E. 645000m E. 646000m E. 647000m E. 648000m E. WGS84 Zone 10S 649000m E.



These maps are provided as a free service to PCT hikers. I believe the information is accurate but they may contain errors. The maps are distributed in the hope that they will be useful, but WITHOUT ANY WARRANTY; without even the implied warranty of MERCHANTABILITY or FITNESS FOR A PARTICULAR PURPOSE.  
-Halfmile

Several hikers reported mountain lion sightings in 2013 in the Chips Creek area N of Belden.

Watch for Poison Oak near Belden.

**CA Section N - 132.2 miles**  
 Start - Hwy 70 [Belden], mile 1284.3  
 End - Burney Falls State Park, mile 1416.5  
 Elevation Gain +16,834'  
 Elevation Loss -16,141'  
 Elevation Change +693'

---

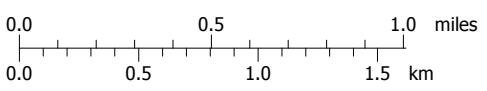
**Belden** - Belden Town Resort - mi 1284.3 - 2210 ft  
**Hwy70** - Paved Highway 70 near Belden Town bridge. - mi 1284.4 - 2254 ft  
**TR1285** - PCT trailhead, Historic Eby Stamp Mill, Belden rest area, outhouses. - mi 1284.5 - 2254 ft  
**WA1285** - Indian Creek, large wooden footbridge. - mi 1285.4 - 2375 ft  
**PL1286** - High voltage power line - mi 1286.1 - 2446 ft  
**TR1286** - Chips Creek trail junction. Creek is 3/10 mi from the PCT. - mi 1286.5 - 2422 ft  
**WA1286** - Small creek - mi 1286.5 - 2473 ft  
**WA1288** - Small seasonal creek. - mi 1288 - 3474 ft  
**LassenNF** - Lassen National Forest, Plumas National Forest boundary. - mi 1289.2 - 3453 ft  
**WA1289** - Seasonal Rattlesnake Spring - mi 1289.3 - 3528 ft  
**WA1290** - Creek - mi 1289.6 - 3645 ft  
**WA1290B** - Creek - mi 1289.9 - 3644 ft  
**WACS1290** - William's Cabin site, campsite, small creek nearby. - mi 1290.2 - 3624 ft  
**WA1291** - Large stream - mi 1290.6 - 3886 ft  
**WACS1291** - Campsites at Myrtle Flat, small stream nearby. - mi 1291.1 - 4119 ft

Map created with **TOPO!** ©2008 National Geographic

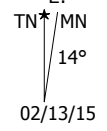
642000m E. 643000m E. 644000m E. 645000m E. 646000m E. 647000m E. 648000m E. WGS84 Zone 10S 649000m E.



Support PCTA.org  
Leave No Trace

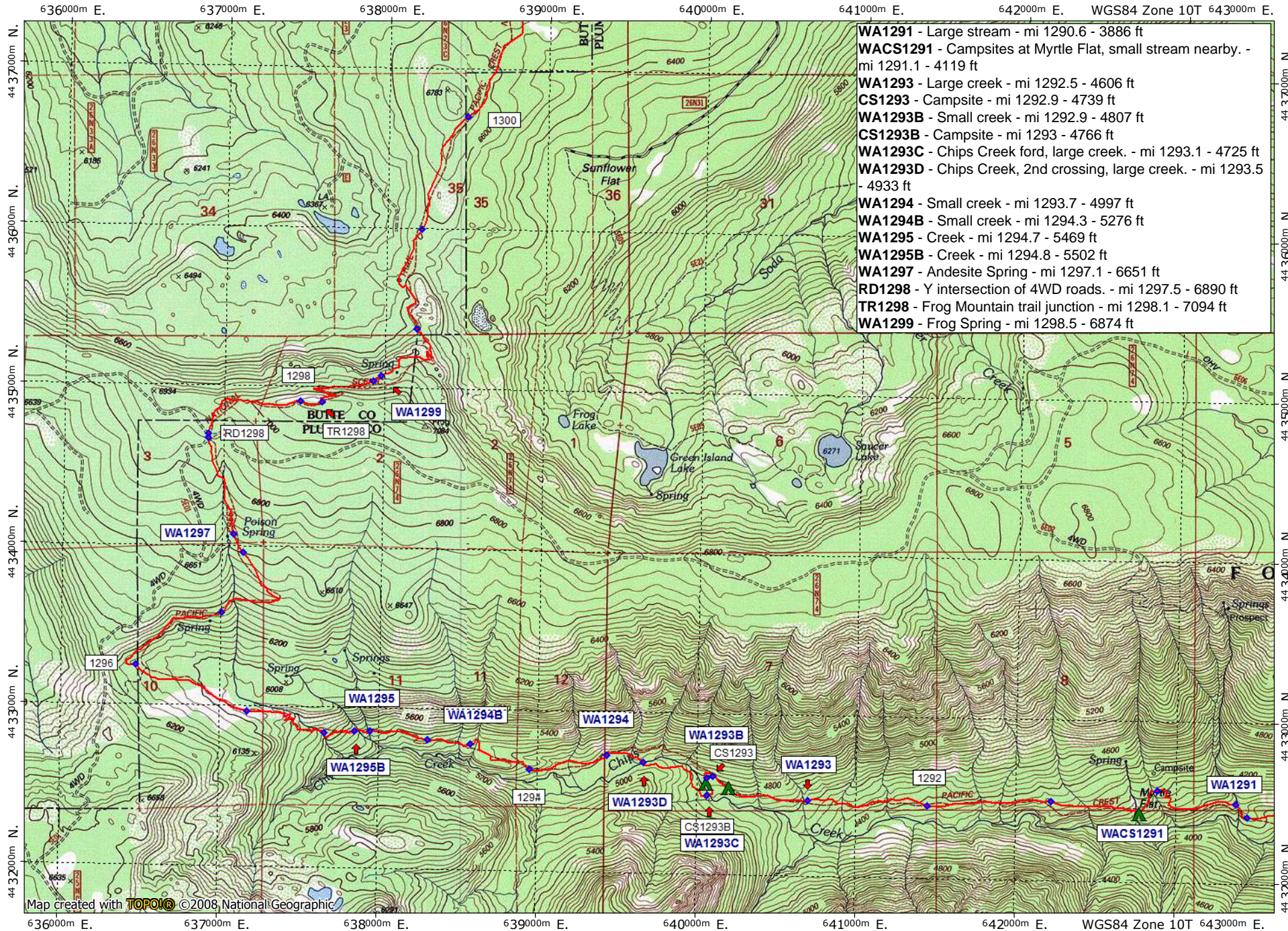


contour interval 40 feet  
 1:31,680 1" = 1/2 mile  
 Copyright 2015 Halfmile Media  
 www.pctmap.net



02/13/15

California Section N - Page 2



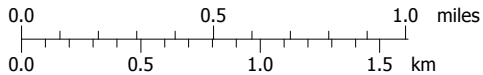
- WA1291 - Large stream - mi 1290.6 - 3886 ft
- WACS1291 - Campsites at Myrtle Flat, small stream nearby. - mi 1291.1 - 4119 ft
- WA1293 - Large creek - mi 1292.5 - 4606 ft
- CS1293 - Campsite - mi 1292.9 - 4739 ft
- WA1293B - Small creek - mi 1292.9 - 4807 ft
- CS1293B - Campsite - mi 1293 - 4766 ft
- WA1293C - Chips Creek ford, large creek. - mi 1293.1 - 4725 ft
- WA1293D - Chips Creek, 2nd crossing, large creek. - mi 1293.5 - 4933 ft
- WA1294 - Small creek - mi 1293.7 - 4997 ft
- WA1294B - Small creek - mi 1294.3 - 5276 ft
- WA1295 - Creek - mi 1294.7 - 5469 ft
- WA1295B - Creek - mi 1294.8 - 5502 ft
- WA1297 - Andesite Spring - mi 1297.1 - 6651 ft
- RD1298 - Y intersection of 4WD roads. - mi 1297.5 - 6890 ft
- TR1298 - Frog Mountain trail junction - mi 1298.1 - 7094 ft
- WA1299 - Frog Spring - mi 1298.5 - 6874 ft

Map created with **TOPOM** ©2008 National Geographic

636000m E. 637000m E. 638000m E. 639000m E. 640000m E. 641000m E. 642000m E. WGS84 Zone 10T 643000m E.

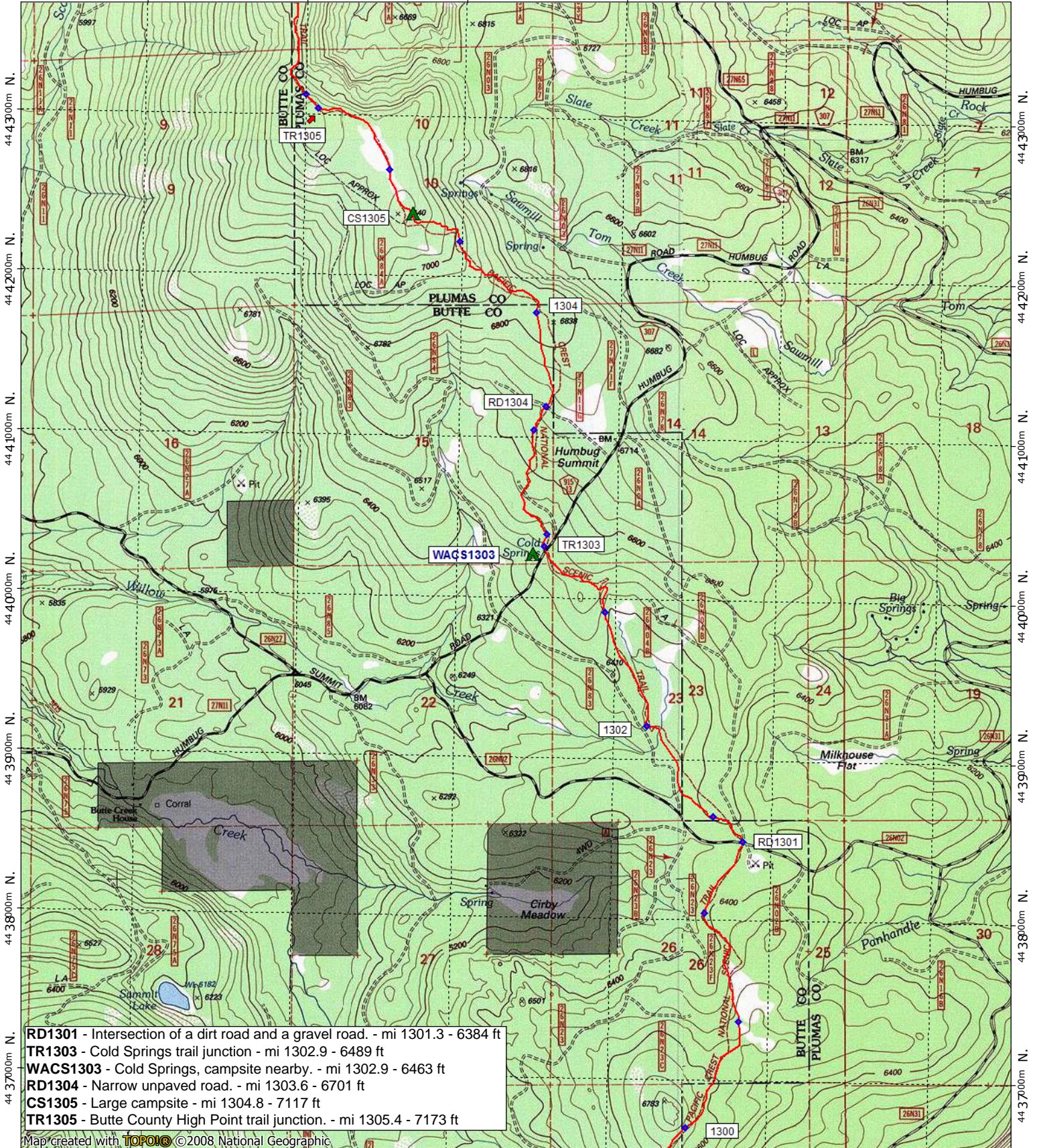


Support PCTA.org  
Leave No Trace



contour interval 40 feet  
1:31,680 1" = 1/2 mile  
Copyright 2015 Halfmile Media  
www.pctmap.net



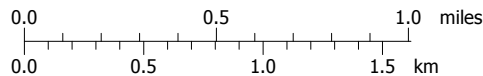


- RD1301** - Intersection of a dirt road and a gravel road. - mi 1301.3 - 6384 ft
- TR1303** - Cold Springs trail junction - mi 1302.9 - 6489 ft
- WACS1303** - Cold Springs, campsite nearby. - mi 1302.9 - 6463 ft
- RD1304** - Narrow unpaved road. - mi 1303.6 - 6701 ft
- CS1305** - Large campsite - mi 1304.8 - 7117 ft
- TR1305** - Butte County High Point trail junction. - mi 1305.4 - 7173 ft

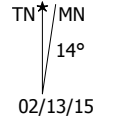
Map created with **TOPOIC** ©2008 National Geographic

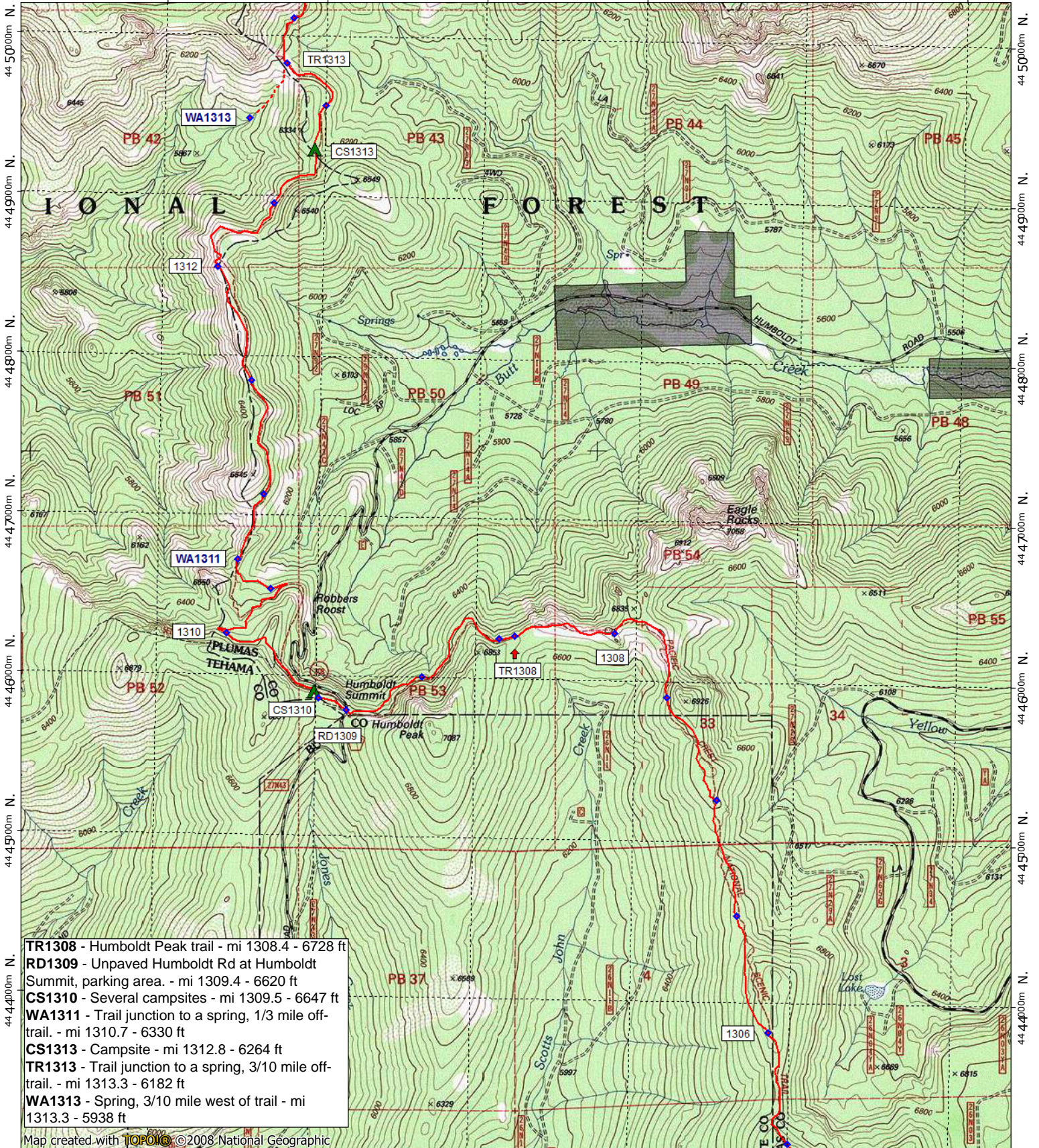


Support PCTA.org  
Leave No Trace

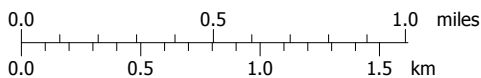


contour interval 40 feet  
1:31,680 1" = 1/2 mile  
Copyright 2015 Halfmile Media  
www.pctmap.net

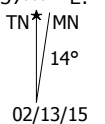


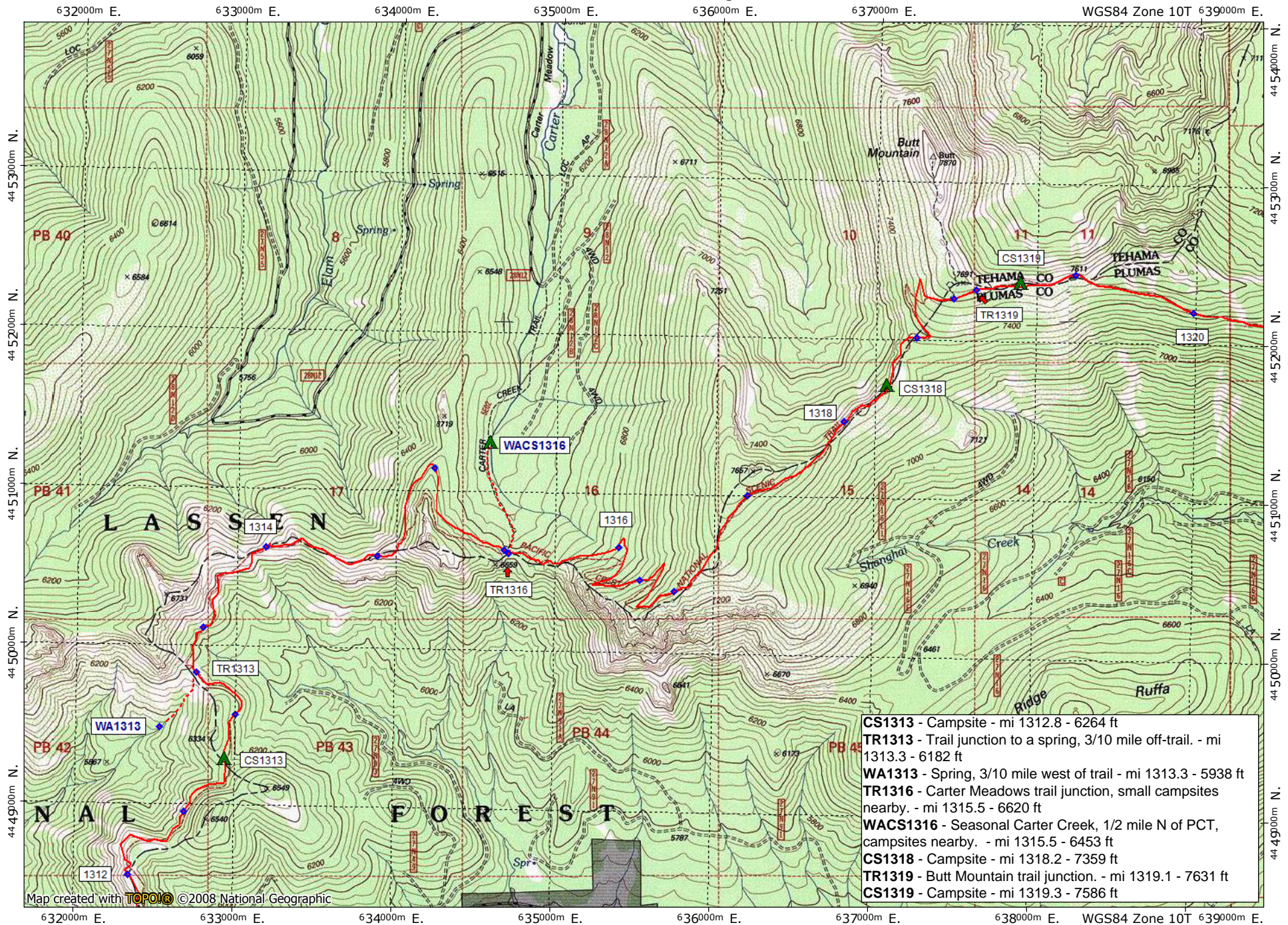


Support [PCTA.org](http://PCTA.org)  
Leave No Trace



contour interval 40 feet  
1:31,680 1" = 1/2 mile  
Copyright 2015 Halfmile Media  
[www.pctmap.net](http://www.pctmap.net)



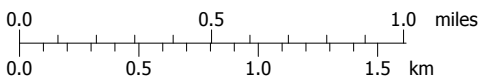


- CS1313** - Campsite - mi 1312.8 - 6264 ft
- TR1313** - Trail junction to a spring, 3/10 mile off-trail. - mi 1313.3 - 6182 ft
- WA1313** - Spring, 3/10 mile west of trail - mi 1313.3 - 5938 ft
- TR1316** - Carter Meadows trail junction, small campsites nearby. - mi 1315.5 - 6620 ft
- WACS1316** - Seasonal Carter Creek, 1/2 mile N of PCT, campsites nearby. - mi 1315.5 - 6453 ft
- CS1318** - Campsite - mi 1318.2 - 7359 ft
- TR1319** - Butt Mountain trail junction. - mi 1319.1 - 7631 ft
- CS1319** - Campsite - mi 1319.3 - 7586 ft

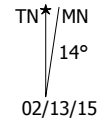
Map created with **TOPO!** ©2008 National Geographic



Support PCTA.org  
Leave No Trace



contour interval 40 feet  
1:31,680 1" = 1/2 mile  
Copyright 2015 Halfmile Media  
www.pctmap.net

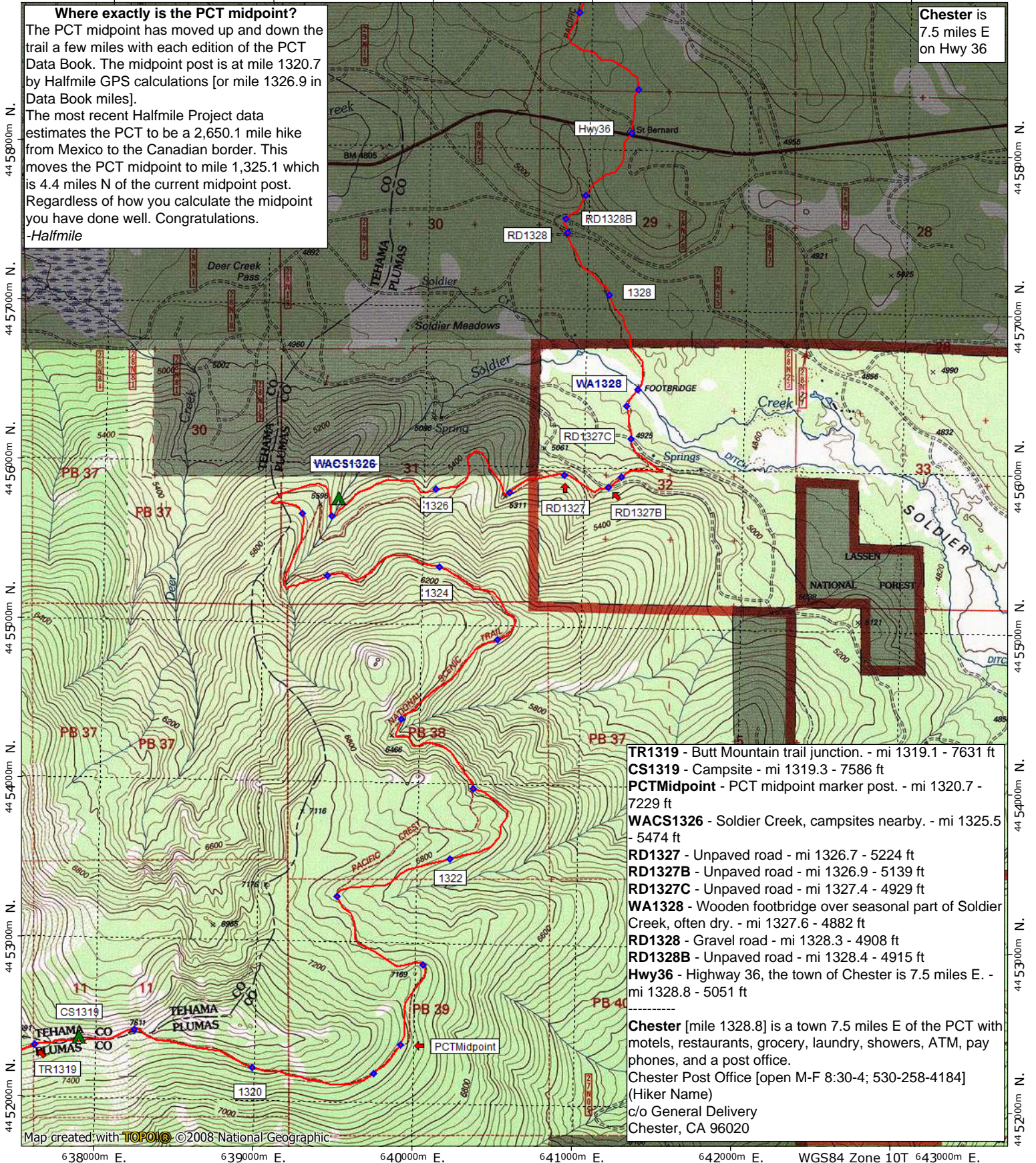


02/13/15

**Where exactly is the PCT midpoint?**

The PCT midpoint has moved up and down the trail a few miles with each edition of the PCT Data Book. The midpoint post is at mile 1320.7 by Halfmile GPS calculations [or mile 1326.9 in Data Book miles].  
 The most recent Halfmile Project data estimates the PCT to be a 2,650.1 mile hike from Mexico to the Canadian border. This moves the PCT midpoint to mile 1,325.1 which is 4.4 miles N of the current midpoint post. Regardless of how you calculate the midpoint you have done well. Congratulations.  
 -Halfmile

**Chester is 7.5 miles E on Hwy 36**

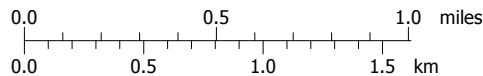


- TR1319 - Butt Mountain trail junction. - mi 1319.1 - 7631 ft
  - CS1319 - Campsite - mi 1319.3 - 7586 ft
  - PCTMidpoint - PCT midpoint marker post. - mi 1320.7 - 7229 ft
  - WACS1326 - Soldier Creek, campsites nearby. - mi 1325.5 - 5474 ft
  - RD1327 - Unpaved road - mi 1326.7 - 5224 ft
  - RD1327B - Unpaved road - mi 1326.9 - 5139 ft
  - RD1327C - Unpaved road - mi 1327.4 - 4929 ft
  - WA1328 - Wooden footbridge over seasonal part of Soldier Creek, often dry. - mi 1327.6 - 4882 ft
  - RD1328 - Gravel road - mi 1328.3 - 4908 ft
  - RD1328B - Unpaved road - mi 1328.4 - 4915 ft
  - Hwy36 - Highway 36, the town of Chester is 7.5 miles E. - mi 1328.8 - 5051 ft
- Chester** [mile 1328.8] is a town 7.5 miles E of the PCT with motels, restaurants, grocery, laundry, showers, ATM, pay phones, and a post office.  
 Chester Post Office [open M-F 8:30-4; 530-258-4184] (Hiker Name)  
 c/o General Delivery  
 Chester, CA 96020

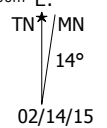
Map created with **TOPOID** ©2008 National Geographic



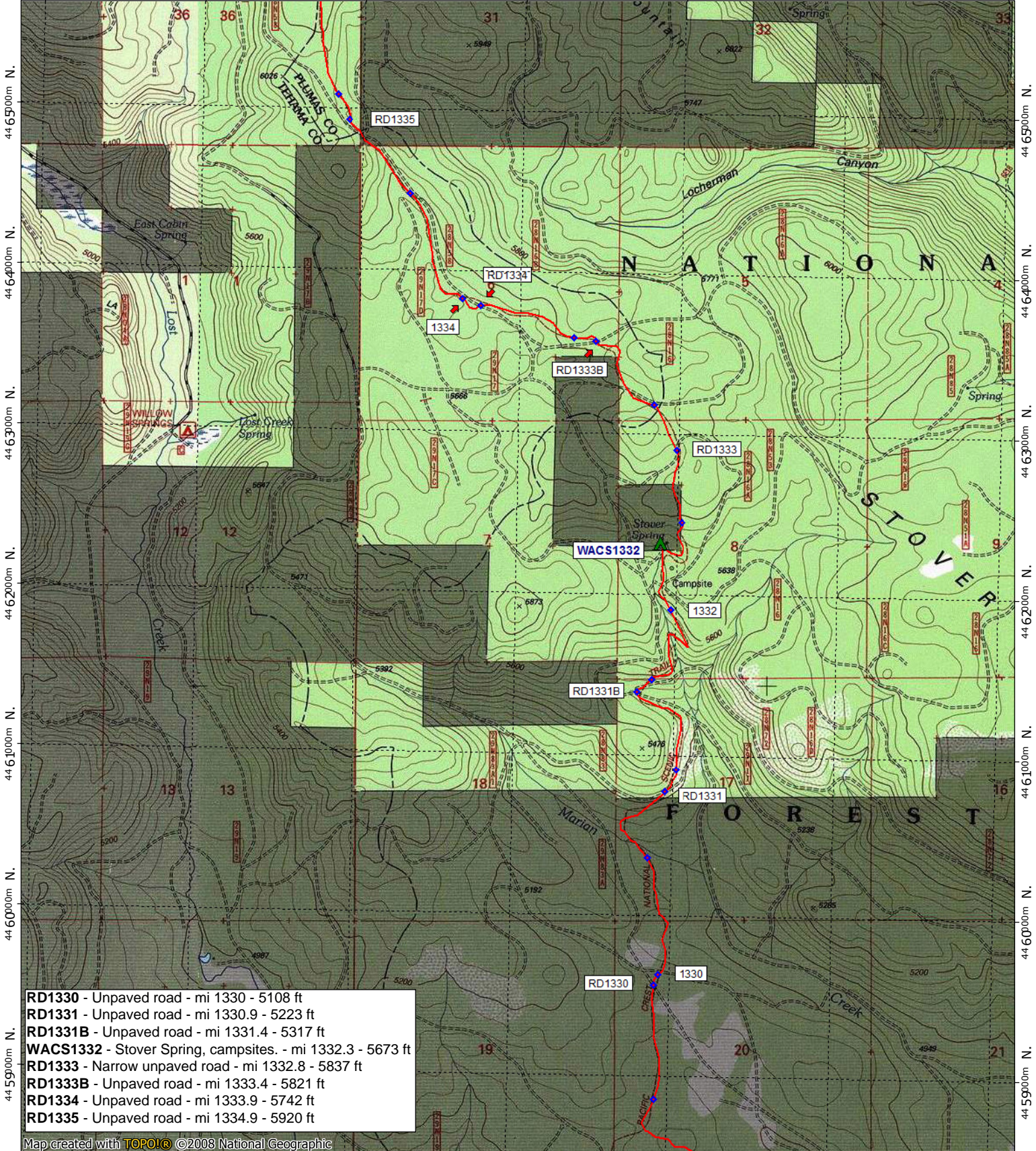
Support PCTA.org  
 Leave No Trace



contour interval 40 feet  
 1:31,680 1" = 1/2 mile  
 Copyright 2015 Halfmile Media  
 www.pctmap.net



637000m E. 638000m E. 639000m E. 640000m E. 641000m E. WGS84 Zone 10T 643000m E.



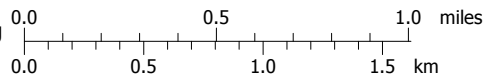
- RD1330 - Unpaved road - mi 1330 - 5108 ft
- RD1331 - Unpaved road - mi 1330.9 - 5223 ft
- RD1331B - Unpaved road - mi 1331.4 - 5317 ft
- WACS1332 - Stover Spring, campsites. - mi 1332.3 - 5673 ft
- RD1333 - Narrow unpaved road - mi 1332.8 - 5837 ft
- RD1333B - Unpaved road - mi 1333.4 - 5821 ft
- RD1334 - Unpaved road - mi 1333.9 - 5742 ft
- RD1335 - Unpaved road - mi 1334.9 - 5920 ft

Map created with **TOPO!** ©2008 National Geographic

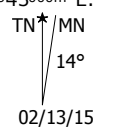
637000m E. 638000m E. 639000m E. 640000m E. 641000m E. WGS84 Zone 10T 643000m E.



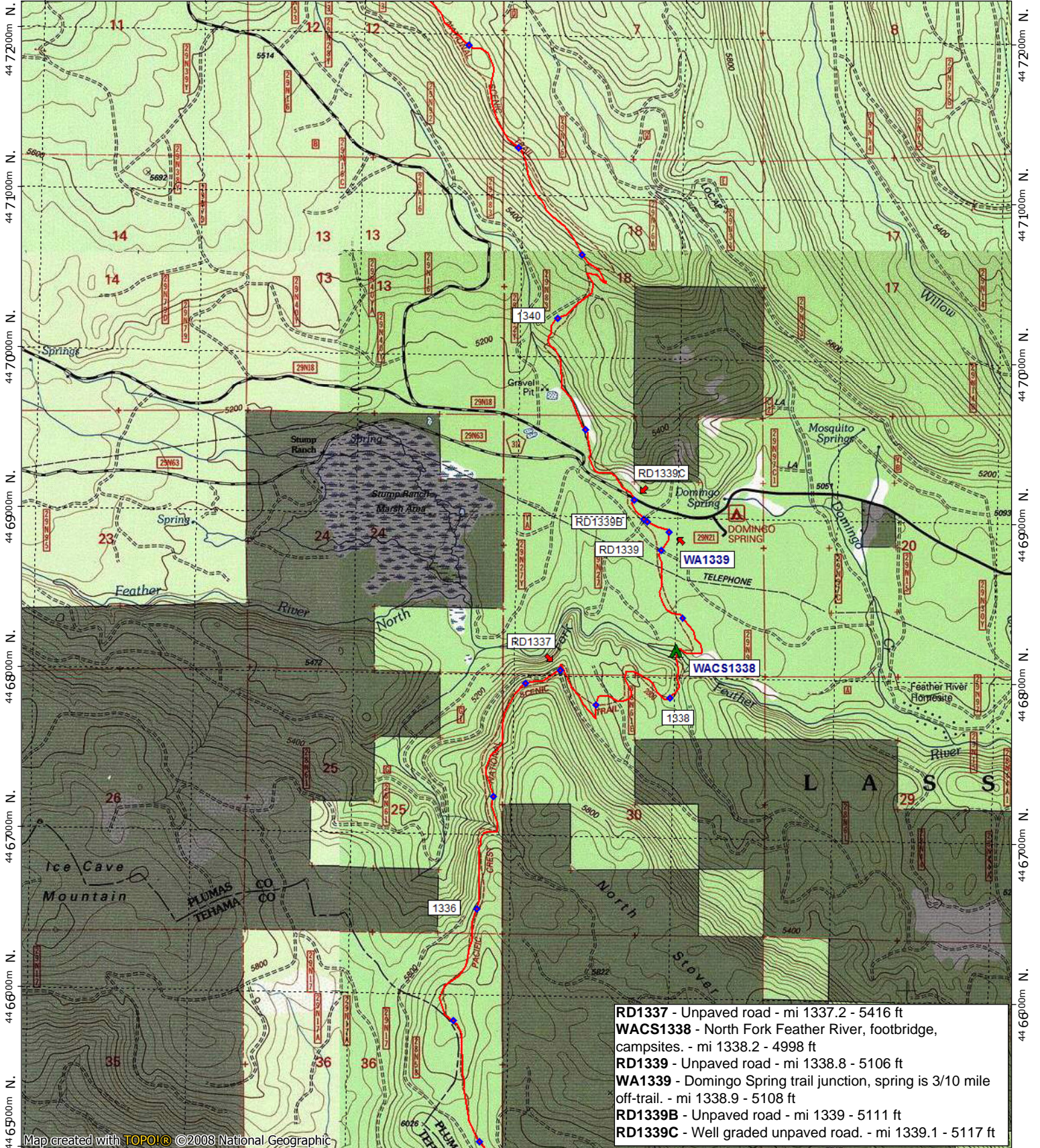
Support [PCTA.org](http://PCTA.org)  
Leave No Trace



contour interval 40 feet  
 1:31,680 1" = 1/2 mile  
 Copyright 2015 Halfmile Media  
[www.pctmap.net](http://www.pctmap.net)



636000m E. 637000m E. 638000m E. 639000m E. 640000m E. WGS84 Zone 10T 642000m E.



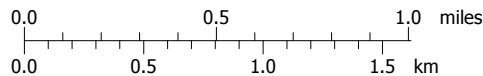
- RD1337** - Unpaved road - mi 1337.2 - 5416 ft
- WACS1338** - North Fork Feather River, footbridge, campsites. - mi 1338.2 - 4998 ft
- RD1339** - Unpaved road - mi 1338.8 - 5106 ft
- WA1339** - Domingo Spring trail junction, spring is 3/10 mile off-trail. - mi 1338.9 - 5108 ft
- RD1339B** - Unpaved road - mi 1339 - 5111 ft
- RD1339C** - Well graded unpaved road. - mi 1339.1 - 5117 ft

Map created with **TOPO!** ©2008 National Geographic

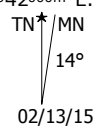
636000m E. 637000m E. 638000m E. 639000m E. 640000m E. WGS84 Zone 10T 642000m E.



Support PCTA.org  
Leave No Trace



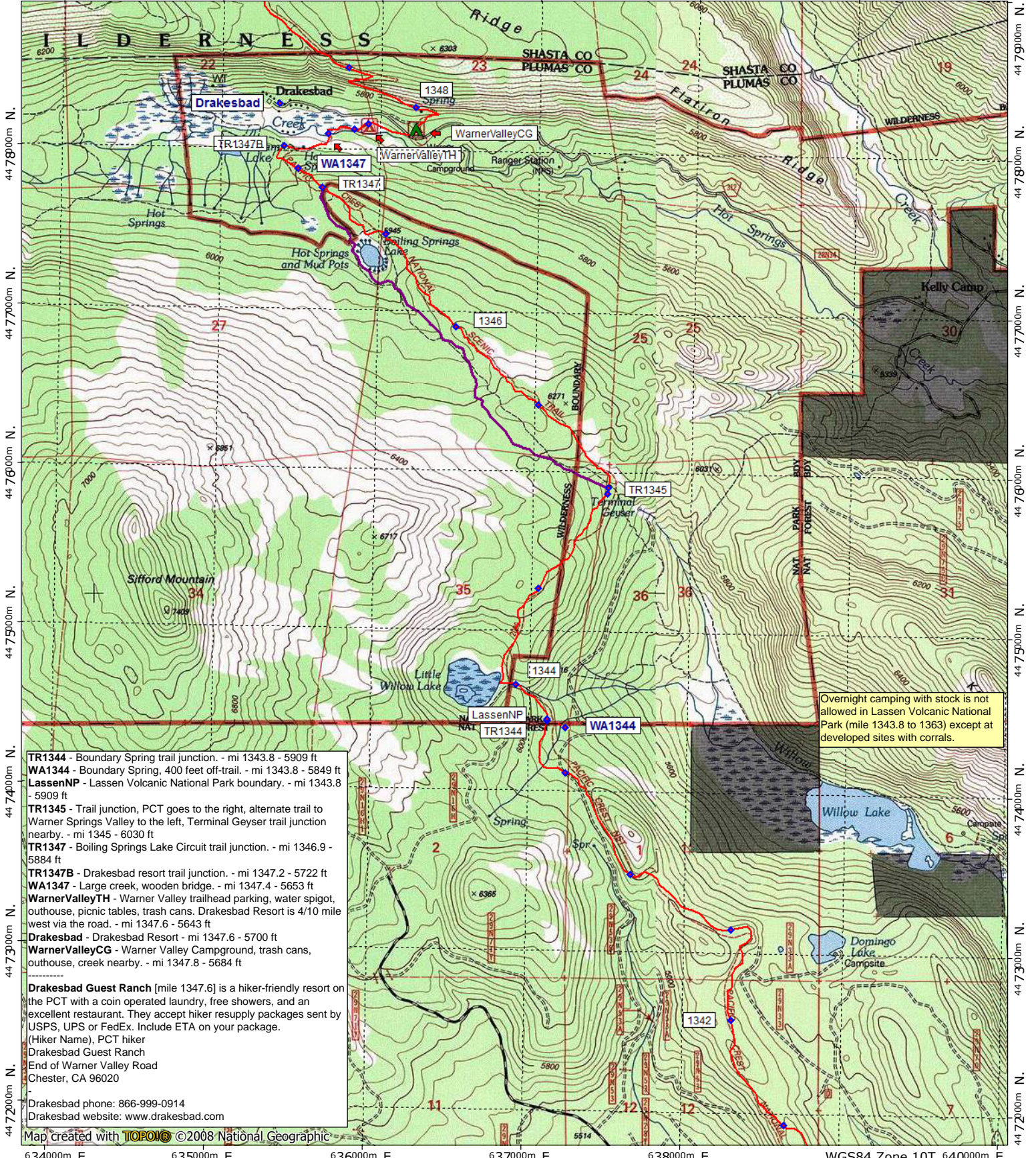
contour interval 40 feet  
1:31,680 1" = 1/2 mile  
Copyright 2015 Halfmile Media  
www.pctmap.net



02/13/15



634000m E. 635000m E. 636000m E. 637000m E. 638000m E. 639000m E.



Overnight camping with stock is not allowed in Lassen Volcanic National Park (mile 1343.8 to 1363) except at developed sites with corrals.

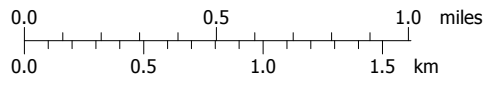
**TR1344** - Boundary Spring trail junction. - mi 1343.8 - 5909 ft  
**WA1344** - Boundary Spring, 400 feet off-trail. - mi 1343.8 - 5849 ft  
**LassenNP** - Lassen Volcanic National Park boundary. - mi 1343.8 - 5909 ft  
**TR1345** - Trail junction, PCT goes to the right, alternate trail to Warner Springs Valley to the left, Terminal Geyser trail junction nearby. - mi 1345 - 6030 ft  
**TR1347** - Boiling Springs Lake Circuit trail junction. - mi 1346.9 - 5884 ft  
**TR1347B** - Drakesbad resort trail junction. - mi 1347.2 - 5722 ft  
**WA1347** - Large creek, wooden bridge. - mi 1347.4 - 5653 ft  
**WarnerValleyTH** - Warner Valley trailhead parking, water spigot, outhouse, picnic tables, trash cans. Drakesbad Resort is 4/10 mile west via the road. - mi 1347.6 - 5643 ft  
**Drakesbad** - Drakesbad Resort - mi 1347.6 - 5700 ft  
**WarnerValleyCG** - Warner Valley Campground, trash cans, outhouse, creek nearby. - mi 1347.8 - 5684 ft

**Drakesbad Guest Ranch** [mile 1347.6] is a hiker-friendly resort on the PCT with a coin operated laundry, free showers, and an excellent restaurant. They accept hiker resupply packages sent by USPS, UPS or FedEx. Include ETA on your package.  
 (Hiker Name), PCT hiker  
 Drakesbad Guest Ranch  
 End of Warner Valley Road  
 Chester, CA 96020  
 Drakesbad phone: 866-999-0914  
 Drakesbad website: [www.drakesbad.com](http://www.drakesbad.com)

Map created with **TOPOIC** ©2008 National Geographic



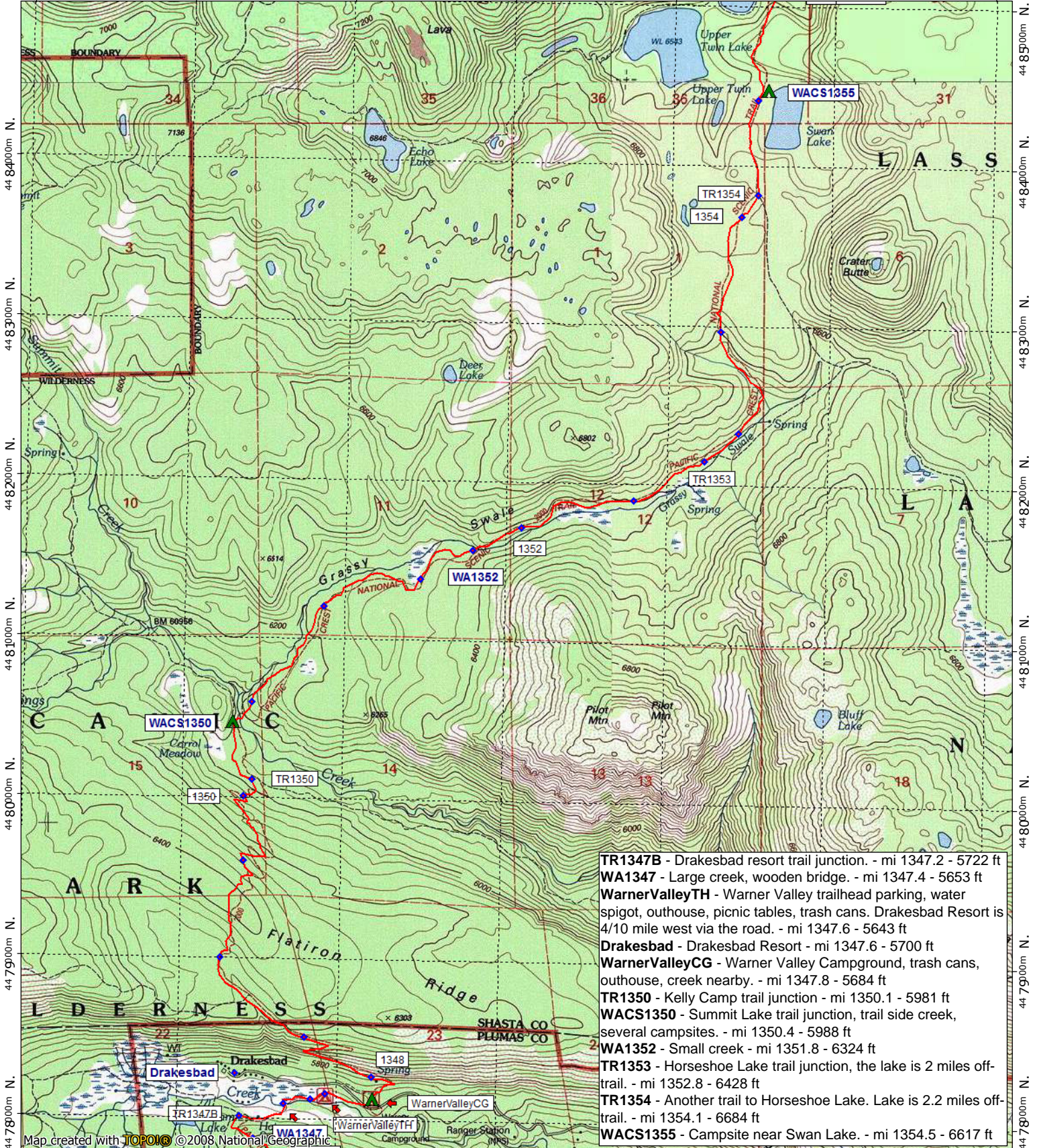
Support PCTA.org  
Leave No Trace



contour interval 40 feet  
 1:31,680 1" = 1/2 mile  
 Copyright 2016 Halfmile Media  
[www.pctmap.net](http://www.pctmap.net)

TN MN  
 14 1/2°  
 02/13/15

634000m E. 635000m E. 636000m E. 637000m E. 638000m E. WGS84 Zone 10T 640000m E.

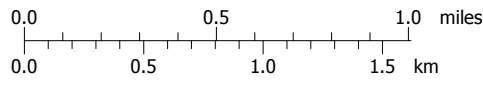


- TR1347B** - Drakesbad resort trail junction. - mi 1347.2 - 5722 ft
- WA1347** - Large creek, wooden bridge. - mi 1347.4 - 5653 ft
- WarnerValleyTH** - Warner Valley trailhead parking, water spigot, outhouse, picnic tables, trash cans. Drakesbad Resort is 4/10 mile west via the road. - mi 1347.6 - 5643 ft
- Drakesbad** - Drakesbad Resort - mi 1347.6 - 5700 ft
- WarnerValleyCG** - Warner Valley Campground, trash cans, outhouse, creek nearby. - mi 1347.8 - 5684 ft
- TR1350** - Kelly Camp trail junction - mi 1350.1 - 5981 ft
- WACS1350** - Summit Lake trail junction, trail side creek, several campsites. - mi 1350.4 - 5988 ft
- WA1352** - Small creek - mi 1351.8 - 6324 ft
- TR1353** - Horseshoe Lake trail junction, the lake is 2 miles off-trail. - mi 1352.8 - 6428 ft
- TR1354** - Another trail to Horseshoe Lake. Lake is 2.2 miles off-trail. - mi 1354.1 - 6684 ft
- WACS1355** - Campsite near Swan Lake. - mi 1354.5 - 6617 ft

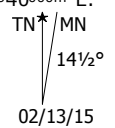
Map created with **TOPOLIS** ©2008, National Geographic



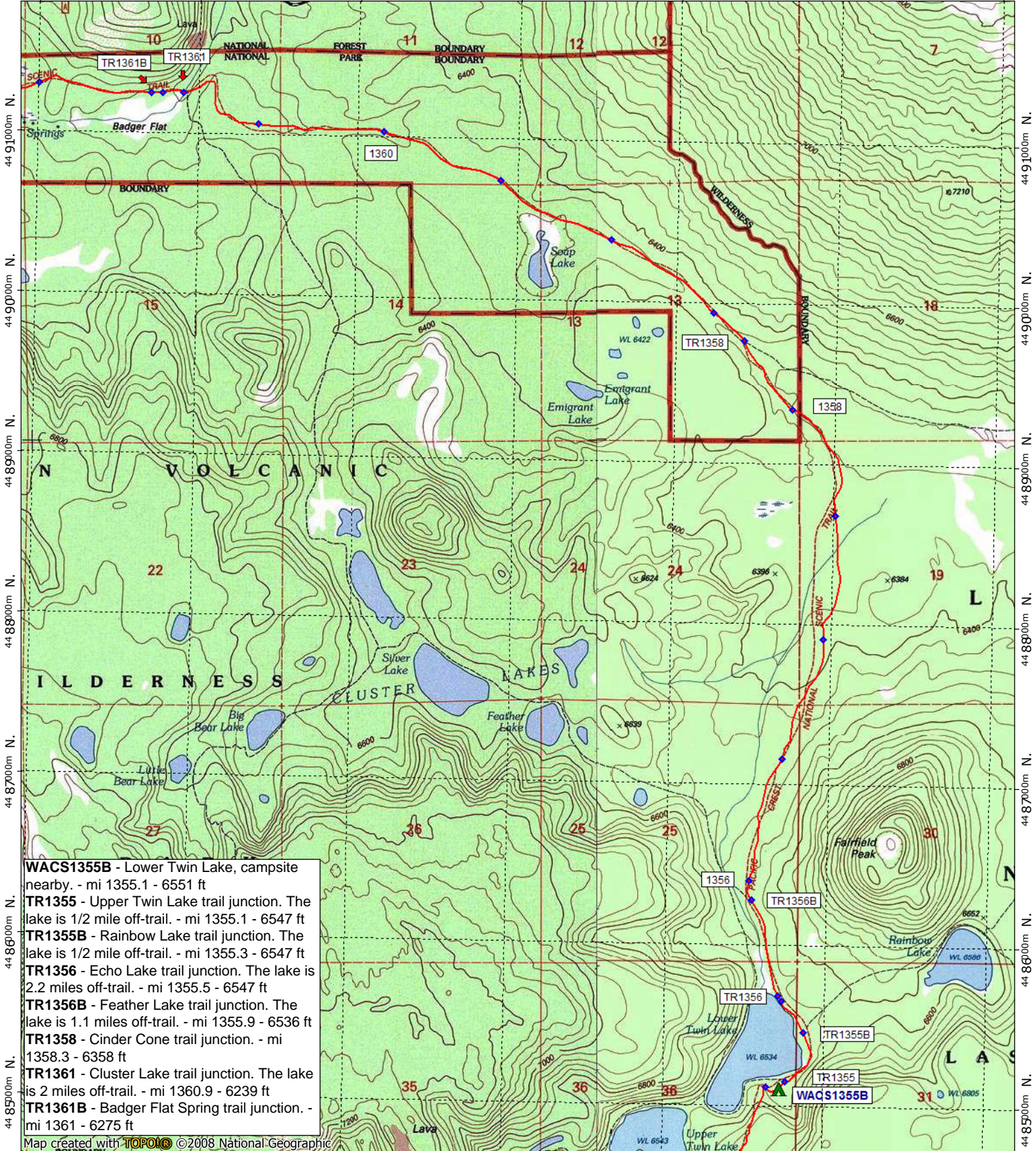
Support [PCTA.org](http://PCTA.org)  
Leave No Trace



contour interval 40 feet  
1:31,680 1" = 1/2 mile  
Copyright 2015 Halfmile Media  
[www.pctmap.net](http://www.pctmap.net)

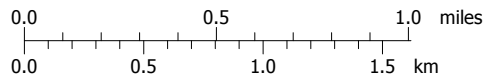


02/13/15

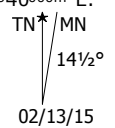


- WACS1355B** - Lower Twin Lake, campsite nearby. - mi 1355.1 - 6551 ft
- TR1355** - Upper Twin Lake trail junction. The lake is 1/2 mile off-trail. - mi 1355.1 - 6547 ft
- TR1355B** - Rainbow Lake trail junction. The lake is 1/2 mile off-trail. - mi 1355.3 - 6547 ft
- TR1356** - Echo Lake trail junction. The lake is 2.2 miles off-trail. - mi 1355.5 - 6547 ft
- TR1356B** - Feather Lake trail junction. The lake is 1.1 miles off-trail. - mi 1355.9 - 6536 ft
- TR1358** - Cinder Cone trail junction. - mi 1358.3 - 6358 ft
- TR1361** - Cluster Lake trail junction. The lake is 2 miles off-trail. - mi 1360.9 - 6239 ft
- TR1361B** - Badger Flat Spring trail junction. - mi 1361 - 6275 ft

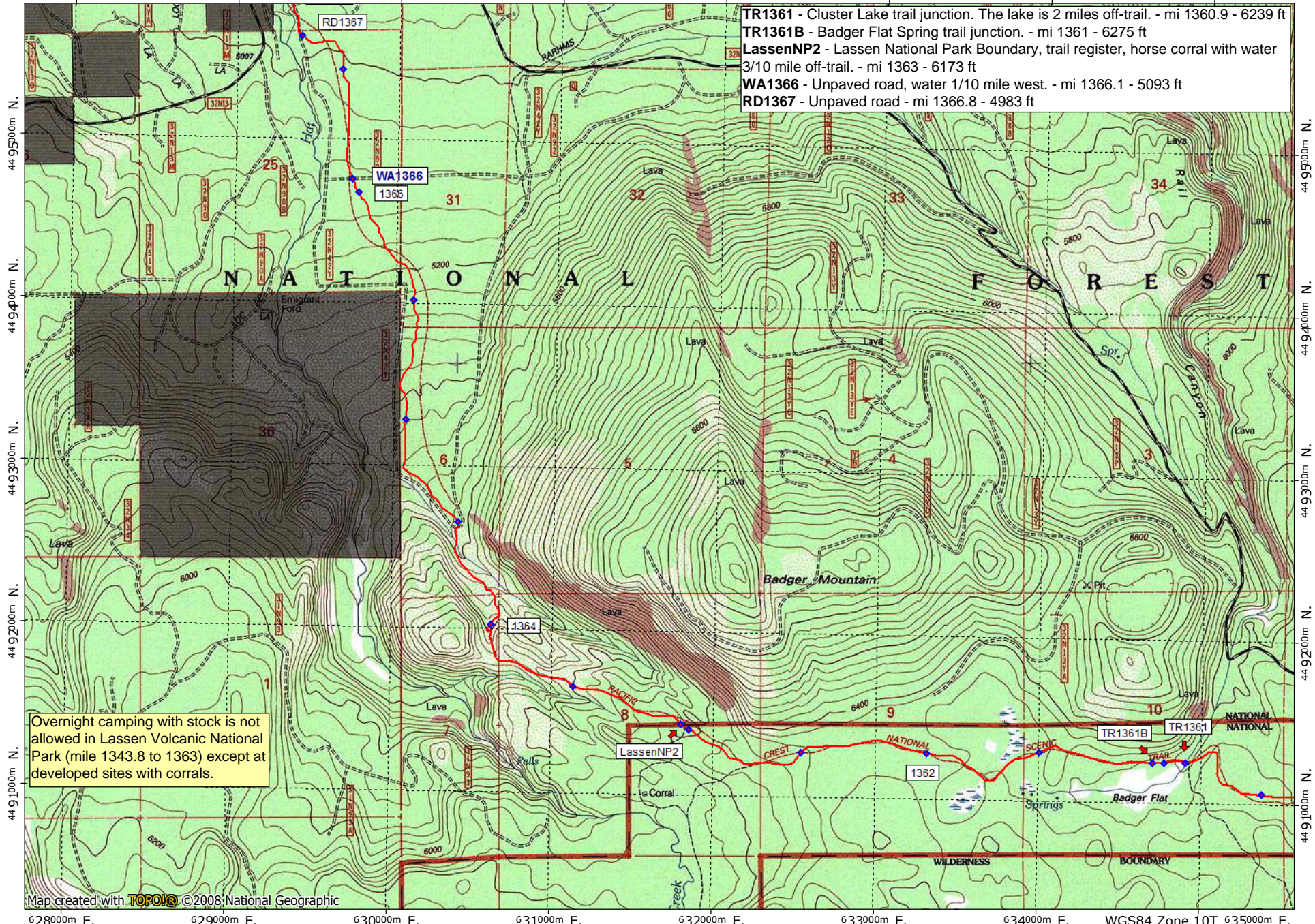
Map created with **TOPOLIC** ©2008 National Geographic



contour interval 40 feet  
 1:31,680 1" = 1/2 mile  
 Copyright 2015 Halfmile Media  
 www.pctmap.net



628000m E. 629000m E. 630000m E. 631000m E. 632000m E. 633000m E. 634000m E. WGS84 Zone 10T 635000m E.



**TR1361** - Cluster Lake trail junction. The lake is 2 miles off-trail. - mi 1360.9 - 6239 ft  
**TR1361B** - Badger Flat Spring trail junction. - mi 1361 - 6275 ft  
**LassenNP2** - Lassen National Park Boundary, trail register, horse corral with water 3/10 mile off-trail. - mi 1363 - 6173 ft  
**WA1366** - Unpaved road, water 1/10 mile west. - mi 1366.1 - 5093 ft  
**RD1367** - Unpaved road - mi 1366.8 - 4983 ft

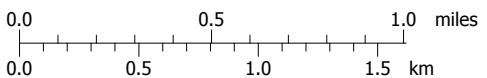
Overnight camping with stock is not allowed in Lassen Volcanic National Park (mile 1343.8 to 1363) except at developed sites with corrals.

Map created with **TOPOM** ©2008 National Geographic

628000m E. 629000m E. 630000m E. 631000m E. 632000m E. 633000m E. 634000m E. WGS84 Zone 10T 635000m E.

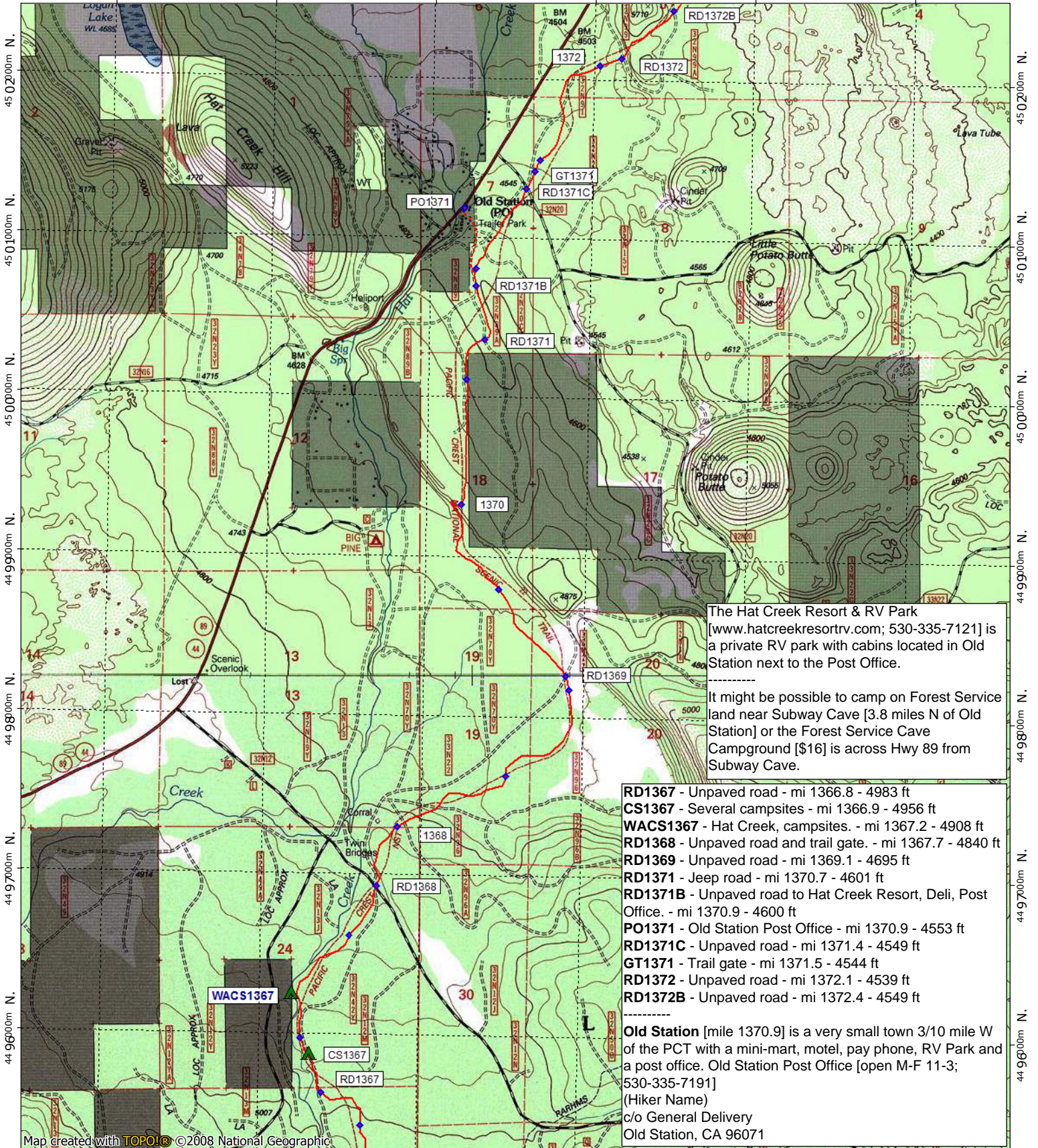


Support PCTA.org  
Leave No Trace



contour interval 40 feet  
 1:31,680 1" = 1/2 mile  
 Copyright 2016 Halfmile Media  
 www.pctmap.net

TN ↑ MN  
 14½°  
 02/13/15

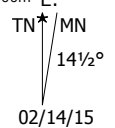
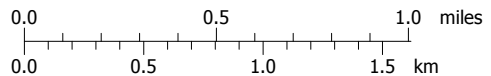


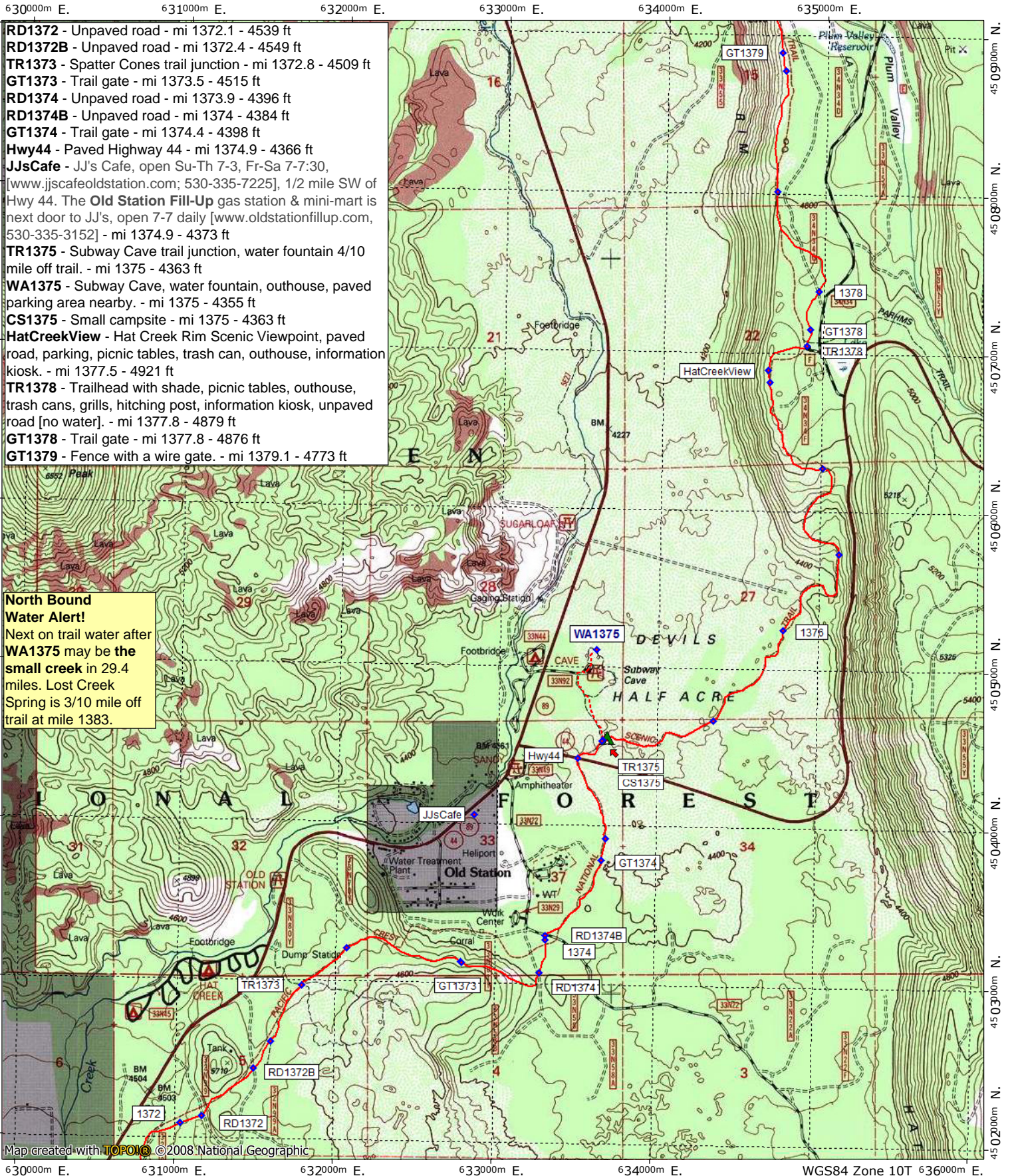
The Hat Creek Resort & RV Park [www.hatcreekresortrv.com; 530-335-7121] is a private RV park with cabins located in Old Station next to the Post Office.

It might be possible to camp on Forest Service land near Subway Cave [3.8 miles N of Old Station] or the Forest Service Cave Campground [16] is across Hwy 89 from Subway Cave.

- RD1367 - Unpaved road - mi 1366.8 - 4983 ft
- CS1367 - Several campsites - mi 1366.9 - 4956 ft
- WACS1367 - Hat Creek, campsites. - mi 1367.2 - 4908 ft
- RD1368 - Unpaved road and trail gate. - mi 1367.7 - 4840 ft
- RD1369 - Unpaved road - mi 1369.1 - 4695 ft
- RD1371 - Jeep road - mi 1370.7 - 4601 ft
- RD1371B - Unpaved road to Hat Creek Resort, Deli, Post Office. - mi 1370.9 - 4600 ft
- PO1371 - Old Station Post Office - mi 1370.9 - 4553 ft
- RD1371C - Unpaved road - mi 1371.4 - 4549 ft
- GT1371 - Trail gate - mi 1371.5 - 4544 ft
- RD1372 - Unpaved road - mi 1372.1 - 4539 ft
- RD1372B - Unpaved road - mi 1372.4 - 4549 ft

**Old Station** [mile 1370.9] is a very small town 3/10 mile W of the PCT with a mini-mart, motel, pay phone, RV Park and a post office. Old Station Post Office [open M-F 11-3; 530-335-7191] (Hiker Name) c/o General Delivery Old Station, CA 96071





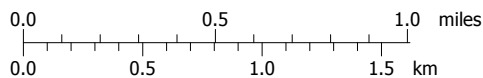
- RD1372** - Unpaved road - mi 1372.1 - 4539 ft
- RD1372B** - Unpaved road - mi 1372.4 - 4549 ft
- TR1373** - Spatter Cones trail junction - mi 1372.8 - 4509 ft
- GT1373** - Trail gate - mi 1373.5 - 4515 ft
- RD1374** - Unpaved road - mi 1373.9 - 4396 ft
- RD1374B** - Unpaved road - mi 1374 - 4384 ft
- GT1374** - Trail gate - mi 1374.4 - 4398 ft
- Hwy44** - Paved Highway 44 - mi 1374.9 - 4366 ft
- JJsCafe** - JJ's Cafe, open Su-Th 7-3, Fr-Sa 7-7:30, [www.jjscafeoldstation.com; 530-335-7225], 1/2 mile SW of Hwy 44. The **Old Station Fill-Up** gas station & mini-mart is next door to JJ's, open 7-7 daily [www.oldstationfillup.com, 530-335-3152] - mi 1374.9 - 4373 ft
- TR1375** - Subway Cave trail junction, water fountain 4/10 mile off trail. - mi 1375 - 4363 ft
- WA1375** - Subway Cave, water fountain, outhouse, paved parking area nearby. - mi 1375 - 4355 ft
- CS1375** - Small campsite - mi 1375 - 4363 ft
- HatCreekView** - Hat Creek Rim Scenic Viewpoint, paved road, parking, picnic tables, trash can, outhouse, information kiosk. - mi 1377.5 - 4921 ft
- TR1378** - Trailhead with shade, picnic tables, outhouse, trash cans, grills, hitching post, information kiosk, unpaved road [no water]. - mi 1377.8 - 4879 ft
- GT1378** - Trail gate - mi 1377.8 - 4876 ft
- GT1379** - Fence with a wire gate. - mi 1379.1 - 4773 ft

**North Bound Water Alert!**  
 Next on trail water after **WA1375** may be the **small creek** in 29.4 miles. Lost Creek Spring is 3/10 mile off trail at mile 1383.

Map created with **TOPOLINK** ©2008 National Geographic



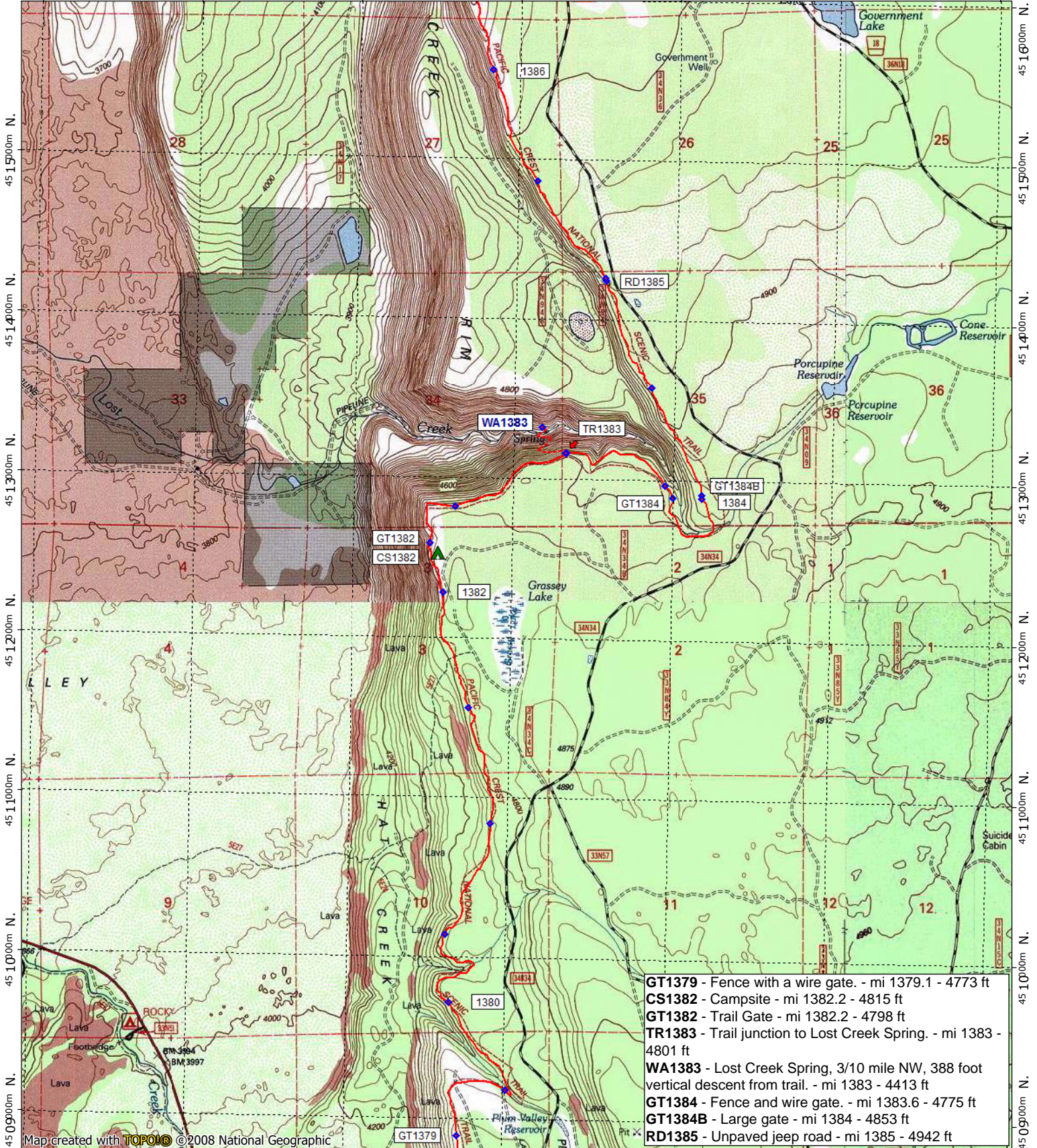
Support [PCTA.org](http://PCTA.org)  
 Leave No Trace



contour interval 40 feet  
 1:31,680 1" = 1/2 mile  
 Copyright 2016 Halfmile Media  
[www.pctmap.net](http://www.pctmap.net)

WGS84 Zone 10T 636000m E.  
 TN MN  
 14 1/2°  
 02/14/15

632000m E. 633000m E. 634000m E. 635000m E. 636000m E. WGS84 Zone 10T 638000m E.



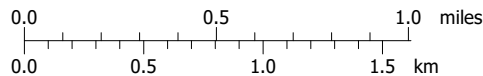
- GT1379** - Fence with a wire gate. - mi 1379.1 - 4773 ft
- CS1382** - Campsite - mi 1382.2 - 4815 ft
- GT1382** - Trail Gate - mi 1382.2 - 4798 ft
- TR1383** - Trail junction to Lost Creek Spring. - mi 1383 - 4801 ft
- WA1383** - Lost Creek Spring, 3/10 mile NW, 388 foot vertical descent from trail. - mi 1383 - 4413 ft
- GT1384** - Fence and wire gate. - mi 1383.6 - 4775 ft
- GT1384B** - Large gate - mi 1384 - 4853 ft
- RD1385** - Unpaved jeep road - mi 1385 - 4942 ft

Map created with **TOPOLIC** ©2008 National Geographic

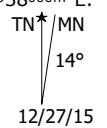
632000m E. 633000m E. 634000m E. 635000m E. 636000m E. WGS84 Zone 10T 638000m E.



Support [PCTA.org](http://PCTA.org)  
Leave No Trace



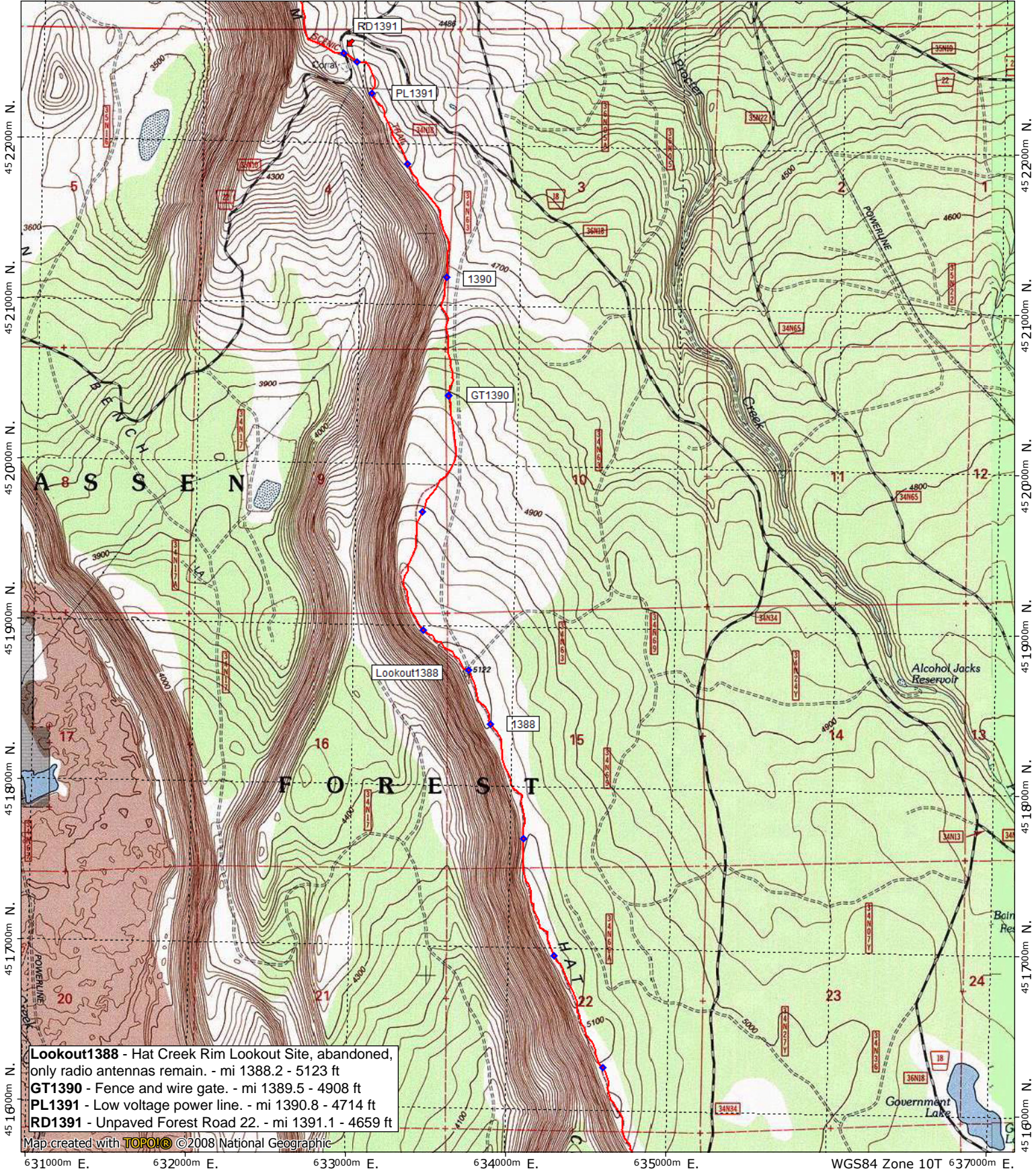
contour interval 20 & 40 feet  
1:31,680 1" = 1/2 mile  
Copyright 2016 Halfmile Media  
[www.pctmap.net](http://www.pctmap.net)



12/27/15

California Section N - Page 16

631000m E. 632000m E. 633000m E. 634000m E. 635000m E. WGS84 Zone 10T 637000m E.



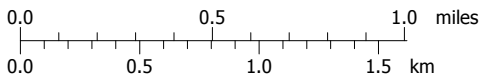
- Lookout1388** - Hat Creek Rim Lookout Site, abandoned, only radio antennas remain. - mi 1388.2 - 5123 ft
- GT1390** - Fence and wire gate. - mi 1389.5 - 4908 ft
- PL1391** - Low voltage power line. - mi 1390.8 - 4714 ft
- RD1391** - Unpaved Forest Road 22. - mi 1391.1 - 4659 ft

Map created with **TOPOLIC** ©2008 National Geographic

631000m E. 632000m E. 633000m E. 634000m E. 635000m E. WGS84 Zone 10T 637000m E.



Support PCTA.org  
Leave No Trace



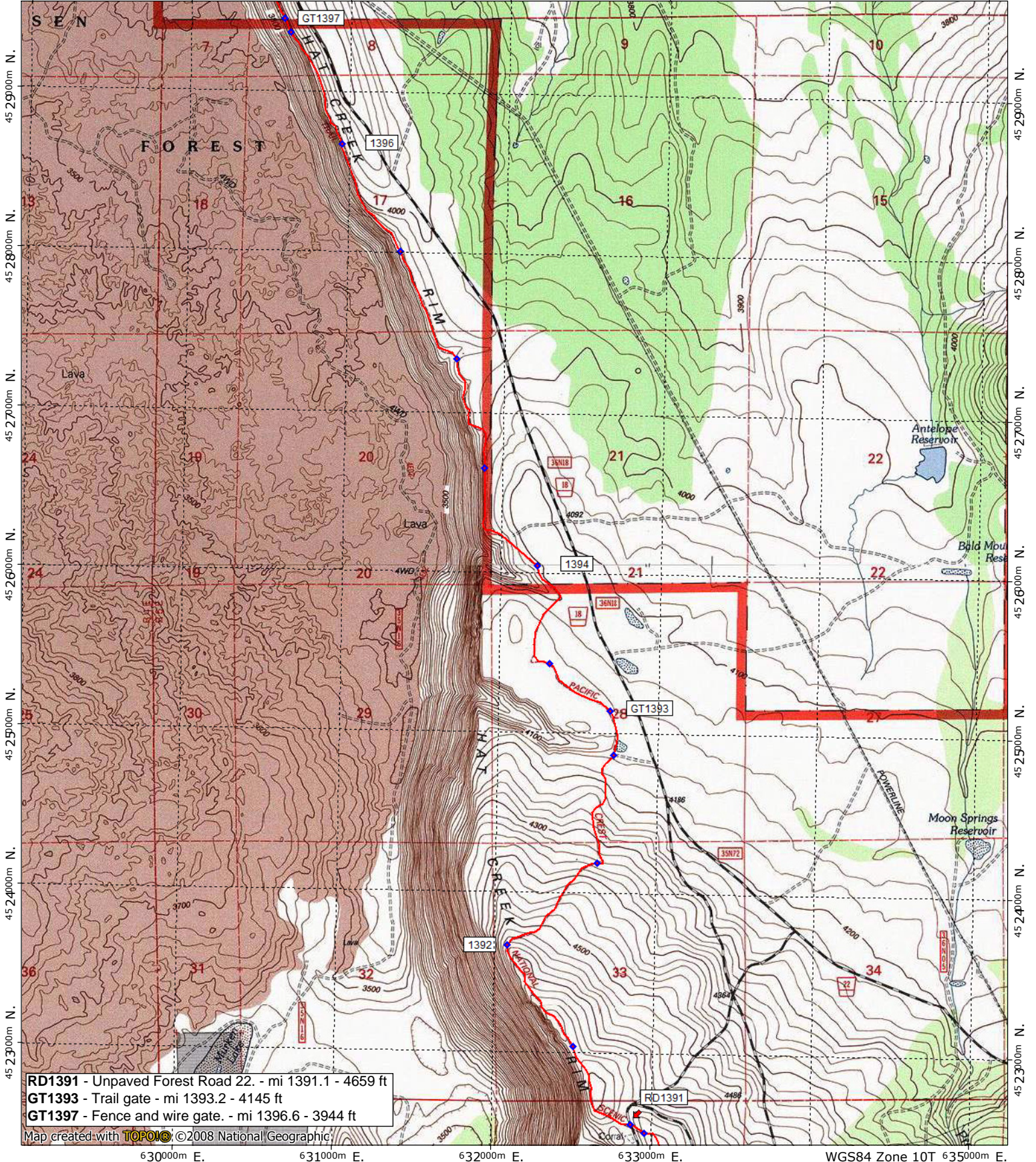
contour interval 20 feet  
1:31,680 1" = 1/2 mile  
Copyright 2015 Halfmile Media  
www.pctmap.net

TN ↑ MN  
14 1/2°  
02/14/15



California Section N - Page 17

629000m E. 630000m E. 631000m E. 632000m E. 633000m E. WGS84 Zone 10T 635000m E.

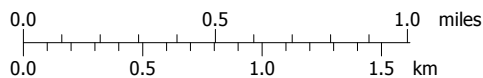


RD1391 - Unpaved Forest Road 22. - mi 1391.1 - 4659 ft  
 GT1393 - Trail gate - mi 1393.2 - 4145 ft  
 GT1397 - Fence and wire gate. - mi 1396.6 - 3944 ft

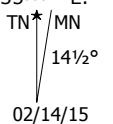
Map created with **TOPOIC** ©2008 National Geographic

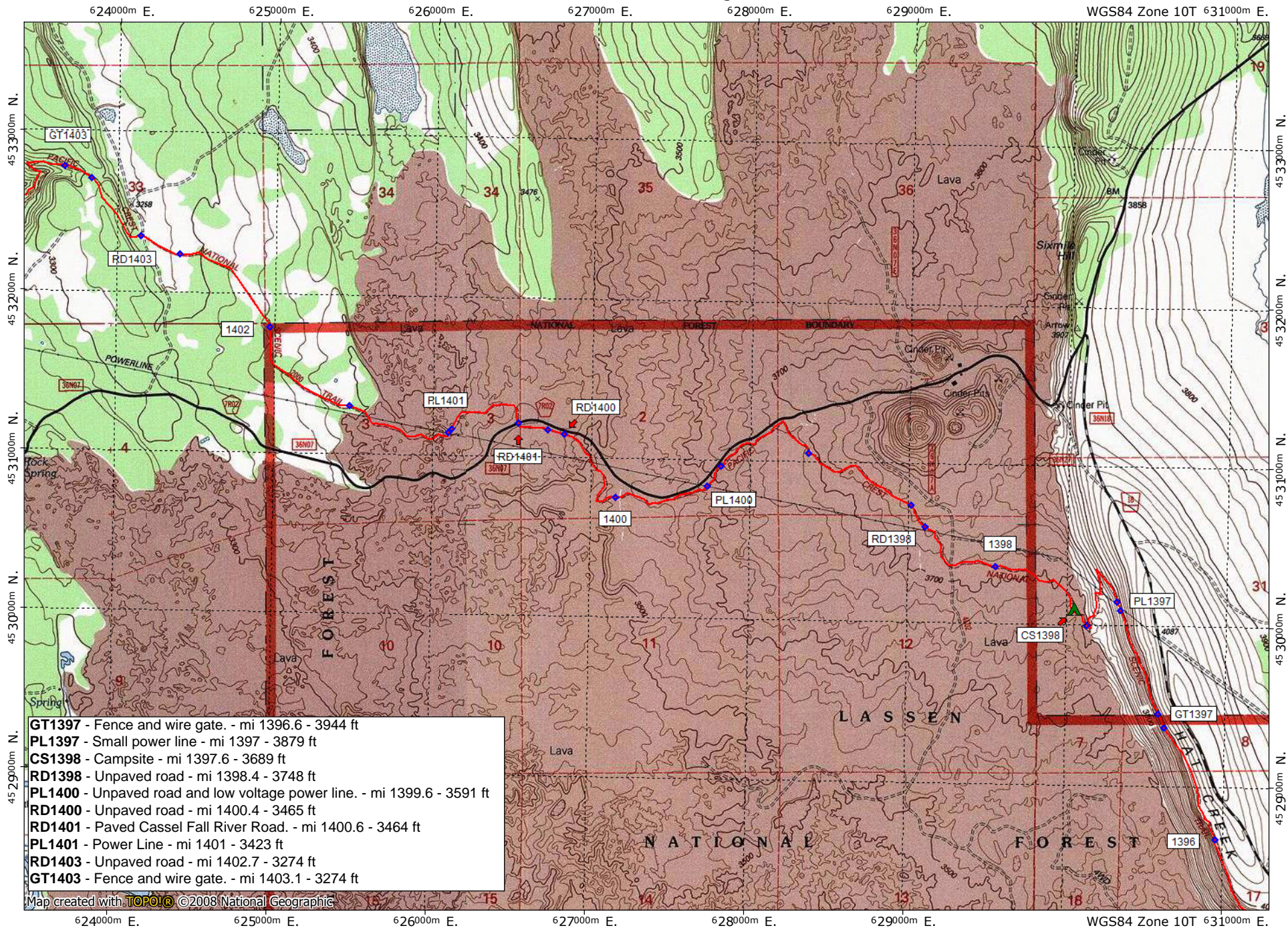


Support PCTA.org  
 Leave No Trace



contour interval 20 feet  
 1:31,680 1" = 1/2 mile  
 Copyright 2015 Halfmile Media  
 www.pctmap.net

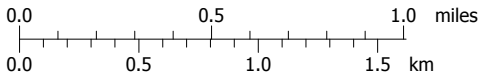




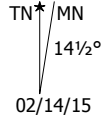
- GT1397** - Fence and wire gate. - mi 1396.6 - 3944 ft
- PL1397** - Small power line - mi 1397 - 3879 ft
- CS1398** - Campsite - mi 1397.6 - 3689 ft
- RD1398** - Unpaved road - mi 1398.4 - 3748 ft
- PL1400** - Unpaved road and low voltage power line. - mi 1399.6 - 3591 ft
- RD1400** - Unpaved road - mi 1400.4 - 3465 ft
- RD1401** - Paved Cassel Fall River Road. - mi 1400.6 - 3464 ft
- PL1401** - Power Line - mi 1401 - 3423 ft
- RD1403** - Unpaved road - mi 1402.7 - 3274 ft
- GT1403** - Fence and wire gate. - mi 1403.1 - 3274 ft



Support PCTA.org  
Leave No Trace



contour interval 20 feet  
1:31,680 1" = 1/2 mile  
Copyright 2015 Halfmile Media  
www.pctmap.net



618000m E. 619000m E. 620000m E. 621000m E. 622000m E. WGS84 Zone 10T 623000m E.

**Burney** [mile 1408.8] is a town 7.7 miles SW of the PCT with motels, restaurants, Safeway grocery, laundry, ATM, pay phones, and a post office.  
 Burney Post Office [open M-F 9:30-4; 530-335-5430] (Hiker Name)  
 c/o General Delivery  
 Burney, CA 96013

Burney is 7.7 miles SW on Hwy 299

**North Bound Water Alert!**  
 Next water after WA1405C may be Burney Falls State Park in 11.3 miles

**South Bound Water Alert!**  
 Next on trail water after WA1404 may be Subway Cave in 29.4 miles. Lost Creek Spring is 3/10 mile off trail at mile 1383.

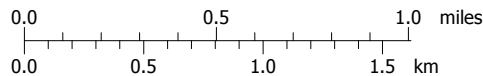
- GT1403 - Fence and wire gate. - mi 1403.1 - 3274 ft
- TR1404 - Rock Creek trail junction, no camping sign. - mi 1404.3 - 3036 ft
- WA1404 - Small creek - mi 1404.4 - 3008 ft
- GT1404 - Trail gate - mi 1404.5 - 3001 ft
- RD1405 - Trail joins a paved road near a hydroelectric plant. - mi 1404.5 - 2992 ft
- WA1405 - Hiker bridge over a river - mi 1404.6 - 2977 ft
- RD1405B - PCT departs the paved road at a parking lot. - mi 1404.6 - 2999 ft
- RD1405C - Cross a gravel PG&E road. Crystal Lake Fish Hatchery is to the right. - mi 1404.8 - 3000 ft
- WA1405B - Crystal Lake Fish Hatchery, 300 feet E of trail, water. - mi 1404.8 - 2989 ft
- RD1405D - Cross paved road, trail gate N of road. - mi 1404.9 - 3001 ft
- WA1405C - Pass near a lake - mi 1405.2 - 2981 ft
- GT1406 - Trail gate - mi 1405.7 - 3001 ft
- CS1406 - Several small campsites. - mi 1405.9 - 3034 ft
- PL1407 - Small power line - mi 1407 - 3285 ft
- PL1407B - High voltage power line - mi 1407.2 - 3312 ft
- RD1408 - Unpaved road - mi 1408.1 - 3242 ft
- RD1408B - Unpaved road - mi 1408.3 - 3134 ft
- Hwy299 - Paved Highway 299 - mi 1408.8 - 3112 ft
- RD1409 - Unpaved road - mi 1409.2 - 3114 ft
- RD1409B - Unpaved road - mi 1409.3 - 3120 ft
- PL1411 - Gas pipeline with warning signs. - mi 1411.1 - 3123 ft

Map created with **TOPOIC** ©2008 National Geographic

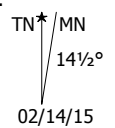
618000m E. 619000m E. 620000m E. 621000m E. 622000m E. WGS84 Zone 10T 623000m E.



Support PCTA.org  
 Leave No Trace



contour interval 20 feet  
 1:31,680 1" = 1/2 mile  
 Copyright 2016 Halfmile Media  
 www.pctmap.net

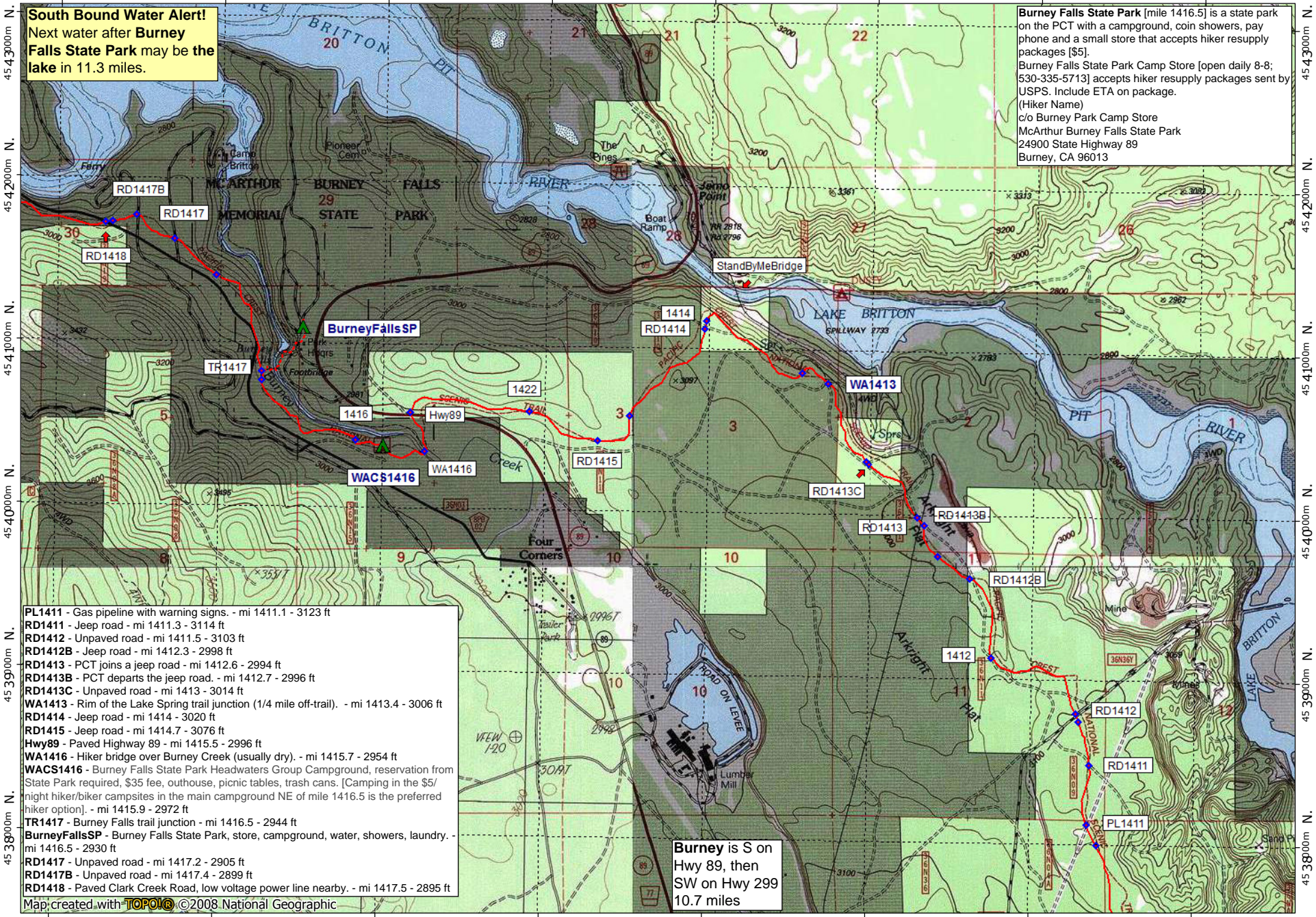


02/14/15

612000m E. 613000m E. 614000m E. 615000m E. 616000m E. 617000m E. 618000m E. WGS84 Zone 10T 619000m E.

**South Bound Water Alert!**  
Next water after Burney Falls State Park may be the lake in 11.3 miles.

Burney Falls State Park [mile 1416.5] is a state park on the PCT with a campground, coin showers, pay phone and a small store that accepts hiker resupply packages [\$5].  
Burney Falls State Park Camp Store [open daily 8-8; 530-335-5713] accepts hiker resupply packages sent by USPS. Include ETA on package.  
(Hiker Name)  
c/o Burney Park Camp Store  
McArthur Burney Falls State Park  
24900 State Highway 89  
Burney, CA 96013



- PL1411 - Gas pipeline with warning signs. - mi 1411.1 - 3123 ft
- RD1411 - Jeep road - mi 1411.3 - 3114 ft
- RD1412 - Unpaved road - mi 1411.5 - 3103 ft
- RD1412B - Jeep road - mi 1412.3 - 2998 ft
- RD1413 - PCT joins a jeep road - mi 1412.6 - 2994 ft
- RD1413B - PCT departs the jeep road. - mi 1412.7 - 2996 ft
- RD1413C - Unpaved road - mi 1413 - 3014 ft
- WA1413 - Rim of the Lake Spring trail junction (1/4 mile off-trail). - mi 1413.4 - 3006 ft
- RD1414 - Jeep road - mi 1414 - 3020 ft
- RD1415 - Jeep road - mi 1414.7 - 3076 ft
- Hwy89 - Paved Highway 89 - mi 1415.5 - 2996 ft
- WA1416 - Hiker bridge over Burney Creek (usually dry). - mi 1415.7 - 2954 ft
- WAC\$1416 - Burney Falls State Park Headwaters Group Campground, reservation from State Park required, \$35 fee, outhouse, picnic tables, trash cans. [Camping in the \$5/night hiker/biker campsites in the main campground NE of mile 1416.5 is the preferred hiker option]. - mi 1415.9 - 2972 ft
- TR1417 - Burney Falls trail junction - mi 1416.5 - 2944 ft
- Burney Falls SP - Burney Falls State Park, store, campground, water, showers, laundry. - mi 1416.5 - 2930 ft
- RD1417 - Unpaved road - mi 1417.2 - 2905 ft
- RD1417B - Unpaved road - mi 1417.4 - 2899 ft
- RD1418 - Paved Clark Creek Road, low voltage power line nearby. - mi 1417.5 - 2895 ft

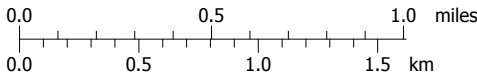
Burney is S on Hwy 89, then SW on Hwy 299 10.7 miles

Map created with **TOPOLIC** ©2008 National Geographic

612000m E. 613000m E. 614000m E. 615000m E. 616000m E. 617000m E. 618000m E. WGS84 Zone 10T 619000m E.



Support PCTA.org  
Leave No Trace



contour interval 20 & 40 feet  
1:31,680 1" = 1/2 mile  
Copyright 2016 Halfmile Media  
www.pctmap.net

TN MN  
14 1/2°  
02/14/15

