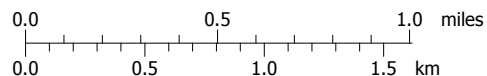


Support PCTA.org  
 Leave No Trace



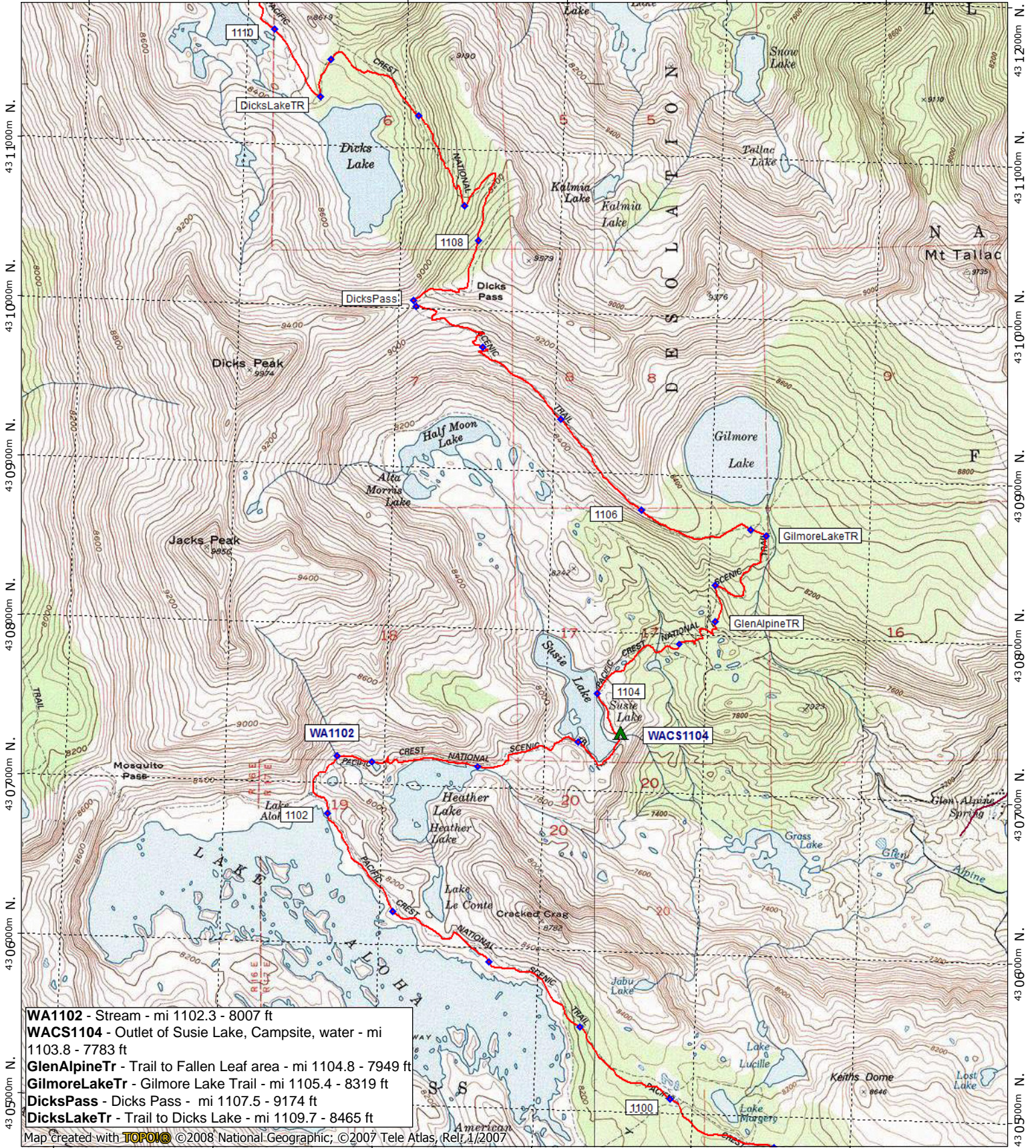
contour interval 40 feet  
 1:31,680 1" = 1/2 mile  
 Copyright 2011 Halfmile Media  
 www.pctmap.net

TN MN  
 14°  
 12/12/09

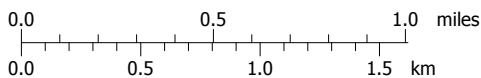


# California Section K - Page 2

746000m E. 747000m E. 748000m E. 749000m E. 750000m E. WGS84 Zone 10S 751000m E.



Support PCTA.org  
Leave No Trace



contour interval 40 feet  
 1:31,680 1" = 1/2 mile  
 Copyright 2011 Halfmile Media  
 www.pctmap.net

TN\* MN  
 14°  
 11/19/10

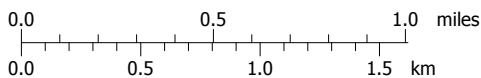


# California Section K - Page 3

743000m E. 744000m E. 745000m E. 746000m E. 747000m E. WGS84 Zone 10S 748000m E.



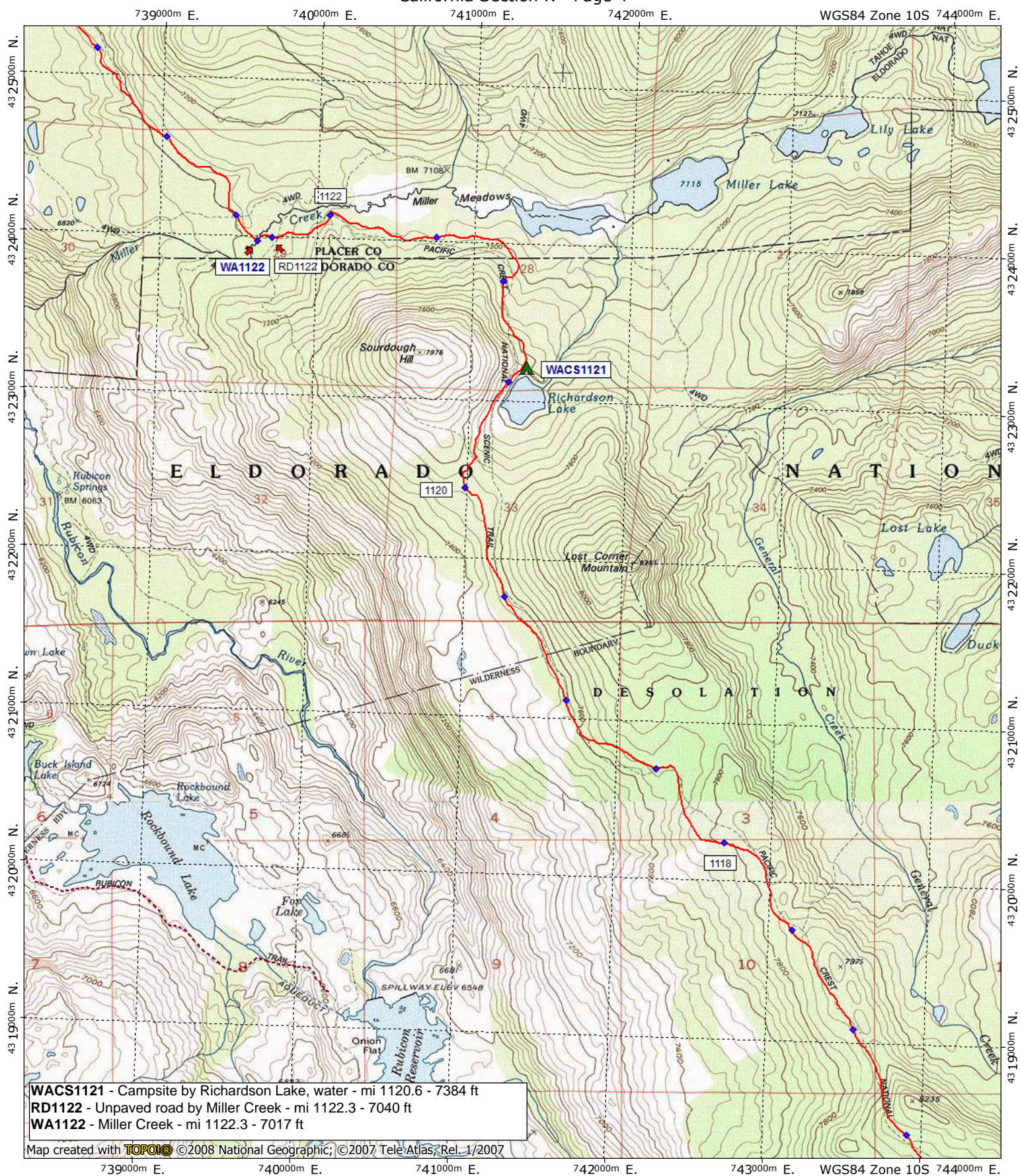
Support PCTA.org  
Leave No Trace



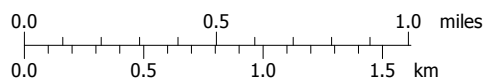
contour interval 40 feet  
 1:31,680 1" = 1/2 mile  
 Copyright 2011 Halfmile Media  
 www.pctmap.net

TN\* MN  
 14°  
 11/12/10





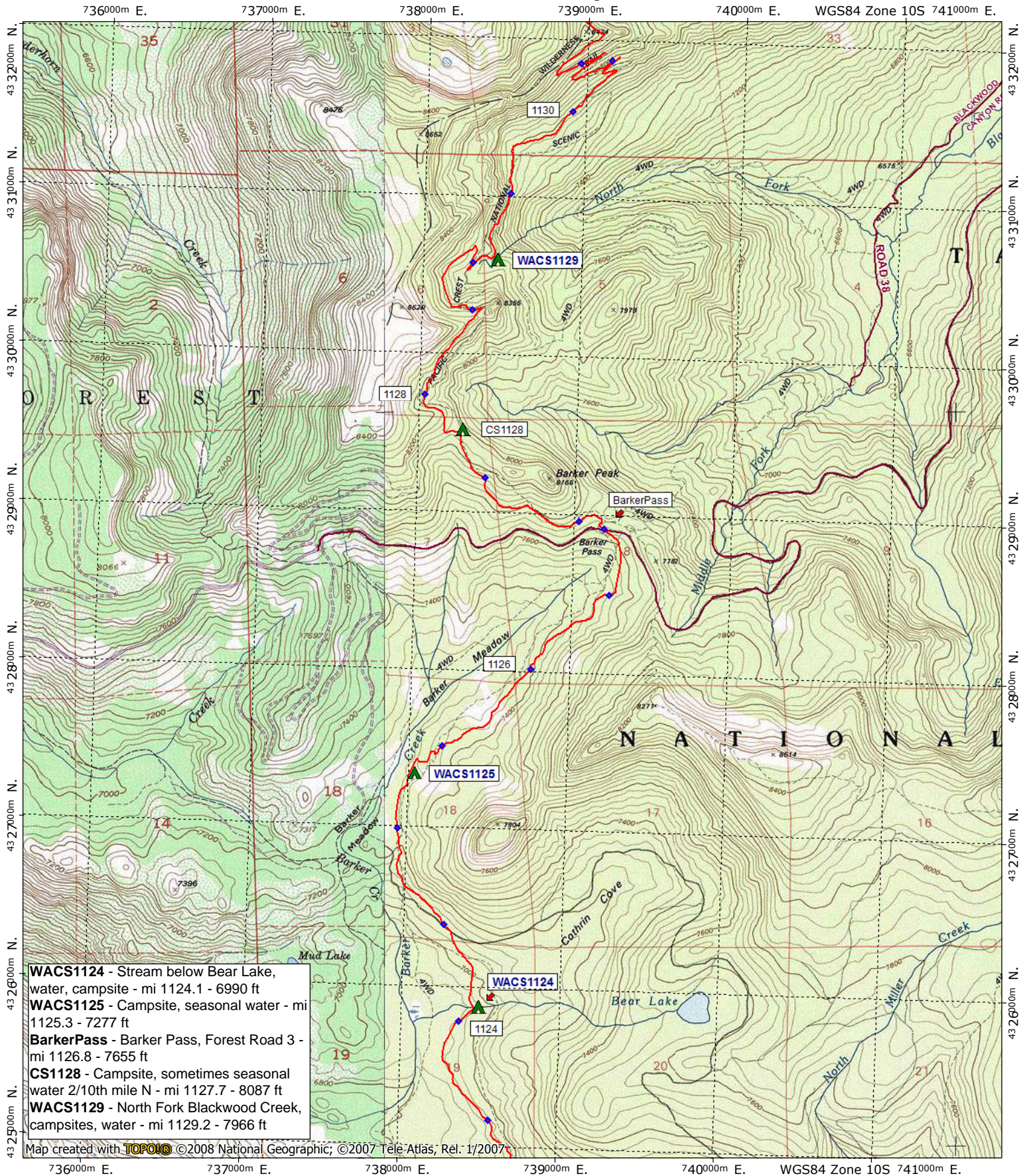
Support PCTA.org  
Leave No Trace



contour interval 40 feet  
1:31,680 1" = 1/2 mile  
Copyright 2011 Halfmile Media  
www.pctmap.net

TN\* MN  
14°  
11/12/10





Support PCTA.org  
Leave No Trace

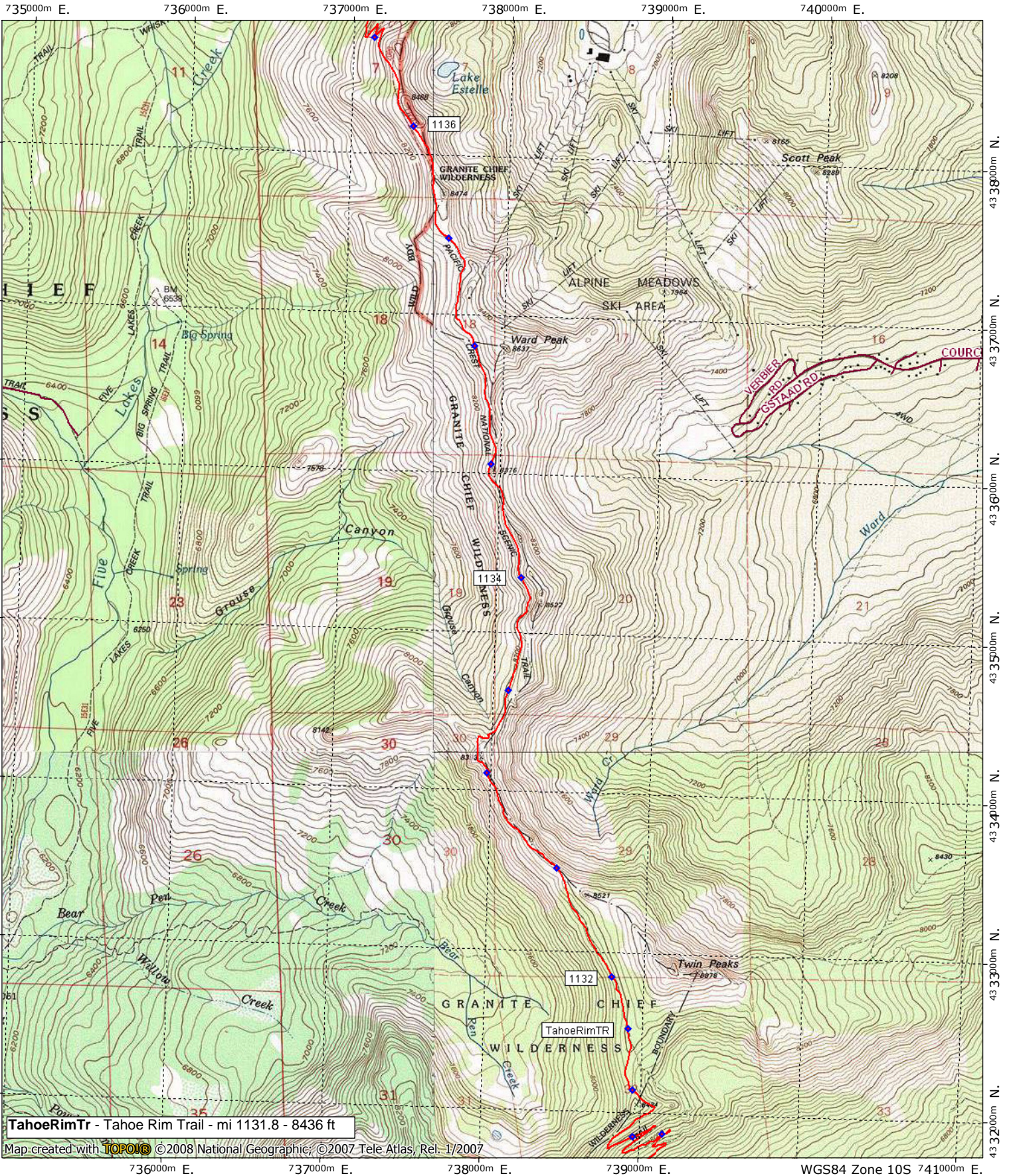
0.0 0.5 1.0 miles  
0.0 0.5 1.0 1.5 km

contour interval 40 feet  
1:31,680 1" = 1/2 mile  
Copyright 2011 Halfmile Media  
www.pctmap.net

TN MN  
14°  
11/19/10



# California Section K - Page 6

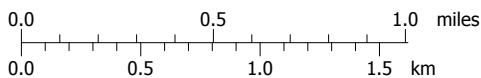


TahoeRimTr - Tahoe Rim Trail - mi 1131.8 - 8436 ft

Map created with **TOPOICS** ©2008 National Geographic, ©2007 Tele Atlas, Rel. 1/2007



Support PCTA.org  
Leave No Trace

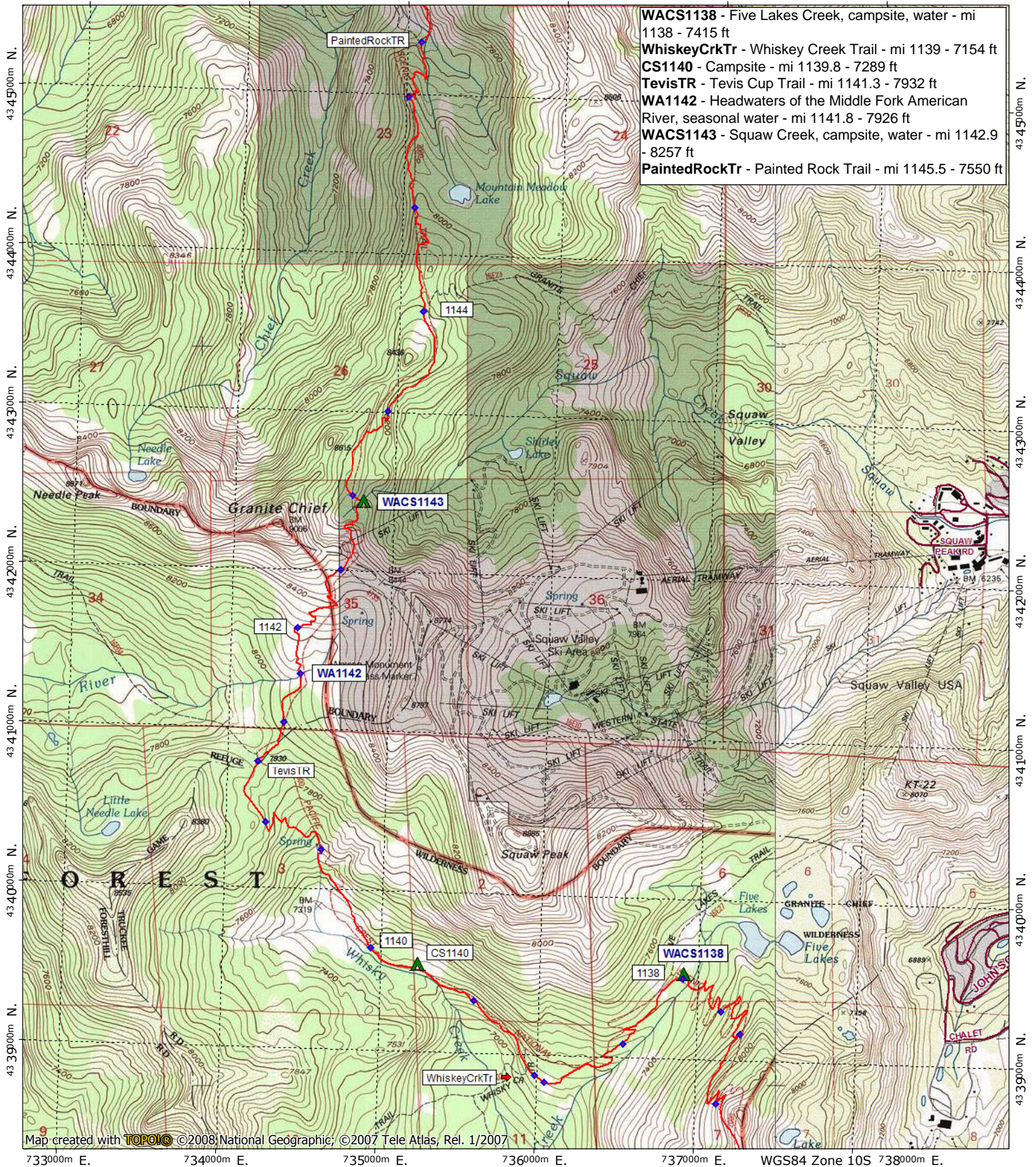


contour interval 40 feet  
1:31,680 1" = 1/2 mile  
Copyright 2011 Halfmile Media  
www.pctmap.net

WGS84 Zone 10S 741000m E.  
TN MN  
14 1/2°  
12/12/09



733000m E. 734000m E. 735000m E. 736000m E. 737000m E. WGS84 Zone 10S 738000m E.



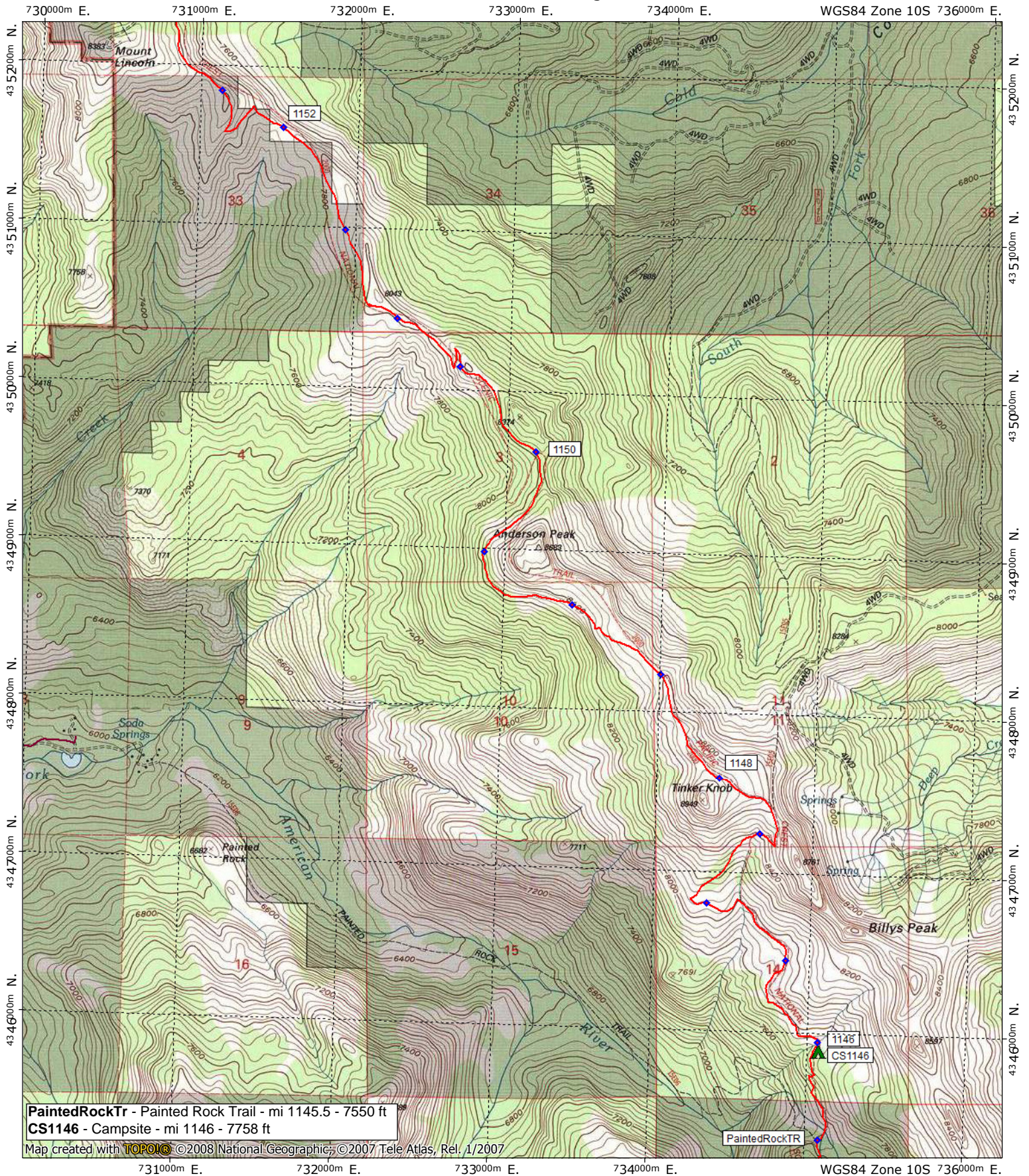
Support PCTA.org  
 Leave No Trace

0.0 0.5 1.0 miles  
 0.0 0.5 1.0 1.5 km

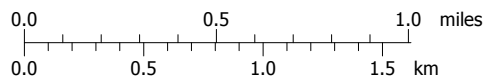
contour interval 40 feet  
 1:31,680 1" = 1/2 mile  
 Copyright 2011 Halfmile Media  
 www.pctmap.net

TN\* MN  
 14°  
 11/19/10





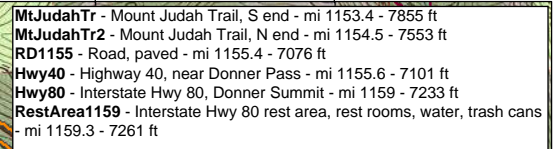
Support PCTA.org  
Leave No Trace



contour interval 40 feet  
 1:31,680 1" = 1/2 mile  
 Copyright 2011 Halfmile Media  
 www.pctmap.net

TN MN  
 14 1/2°  
 11/12/10





**Truckee** [mile 1155.6 or 1159] is a town 12 miles E of the PCT with motels, restaurants, grocery, pharmacy, outfitter, ATM, pay phones, and post office.  
Truckee Post Office [open M-F 8:30-5, Sa 11-2; 530-587-7158]  
(Hiker Name)  
c/o General Delivery  
Truckee, CA 96161

**Truckee** is 12 miles E of the PCT. It can be a difficult hitch because you must navigate Interstate 80.

