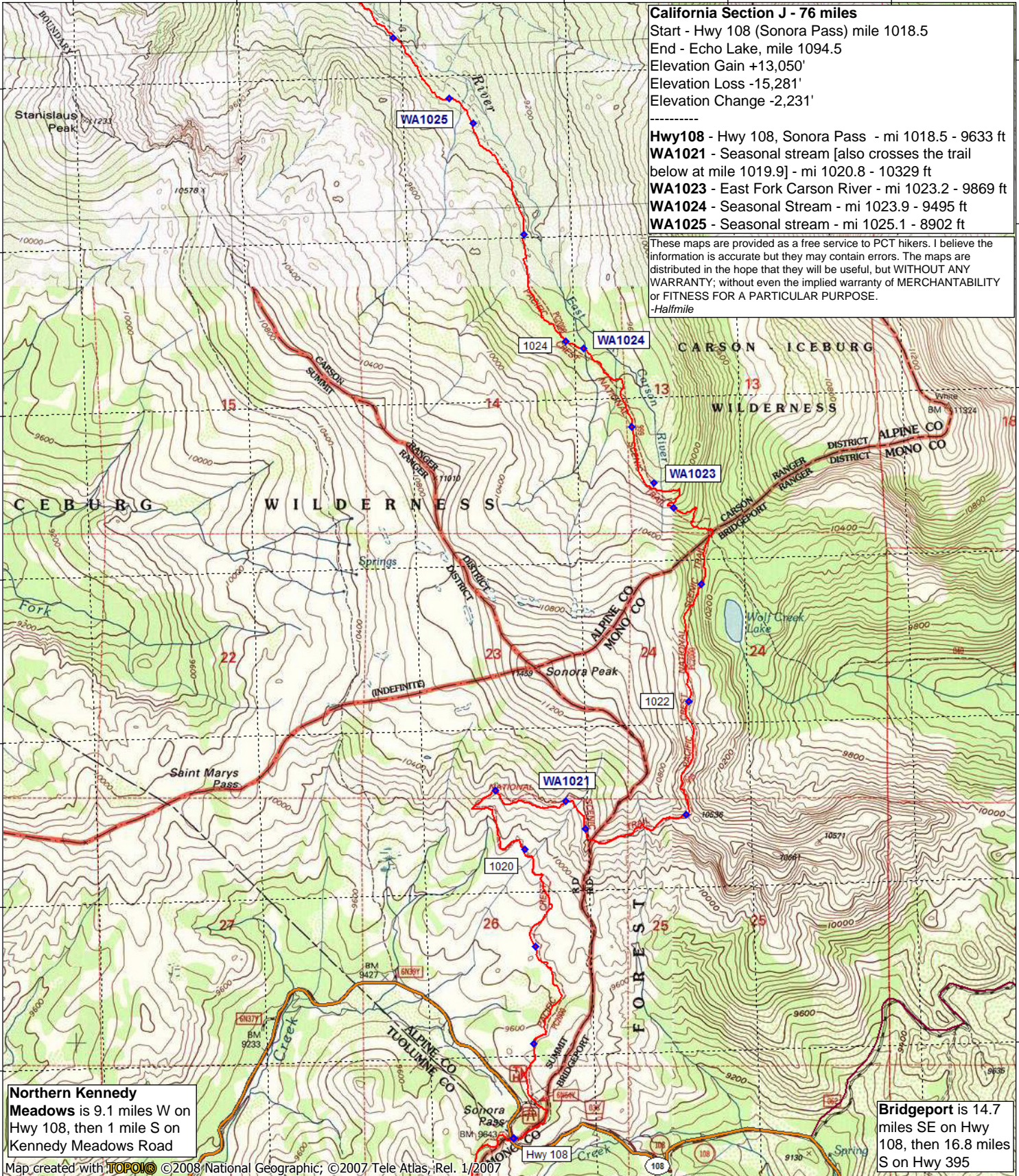


California Section J - 76 miles
 Start - Hwy 108 (Sonora Pass) mile 1018.5
 End - Echo Lake, mile 1094.5
 Elevation Gain +13,050'
 Elevation Loss -15,281'
 Elevation Change -2,231'

Hwy108 - Hwy 108, Sonora Pass - mi 1018.5 - 9633 ft
WA1021 - Seasonal stream [also crosses the trail below at mile 1019.9] - mi 1020.8 - 10329 ft
WA1023 - East Fork Carson River - mi 1023.2 - 9869 ft
WA1024 - Seasonal Stream - mi 1023.9 - 9495 ft
WA1025 - Seasonal stream - mi 1025.1 - 8902 ft

These maps are provided as a free service to PCT hikers. I believe the information is accurate but they may contain errors. The maps are distributed in the hope that they will be useful, but WITHOUT ANY WARRANTY; without even the implied warranty of MERCHANTABILITY or FITNESS FOR A PARTICULAR PURPOSE.
 -Halfmile

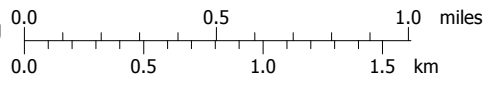


Northern Kennedy Meadows is 9.1 miles W on Hwy 108, then 1 mile S on Kennedy Meadows Road

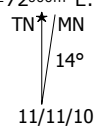
Bridgeport is 14.7 miles SE on Hwy 108, then 16.8 miles S on Hwy 395

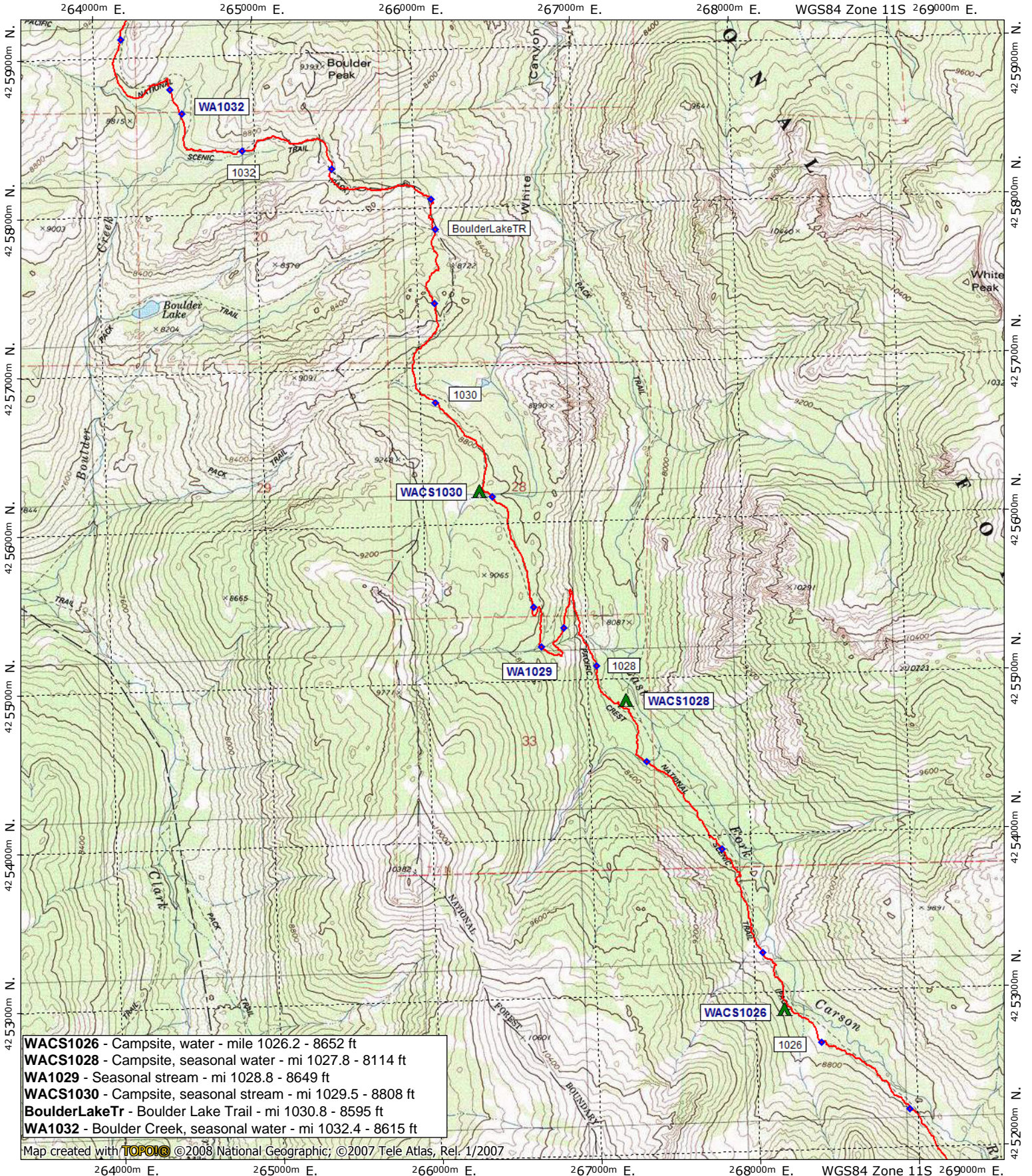


Support PCTA.org
 Leave No Trace



contour interval 40 & 80 feet
 1:31,680 1" = 1/2 mile
 Copyright 2011 Halfmile Media
 www.pctmap.net



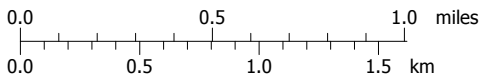


- WACS1026** - Campsite, water - mile 1026.2 - 8652 ft
- WACS1028** - Campsite, seasonal water - mi 1027.8 - 8114 ft
- WA1029** - Seasonal stream - mi 1028.8 - 8649 ft
- WACS1030** - Campsite, seasonal stream - mi 1029.5 - 8808 ft
- BoulderLakeTr** - Boulder Lake Trail - mi 1030.8 - 8595 ft
- WA1032** - Boulder Creek, seasonal water - mi 1032.4 - 8615 ft

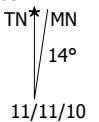
Map created with **TOPOM** ©2008 National Geographic; ©2007 Tele Atlas, Rel. 1/2007



Support PCTA.org
Leave No Trace

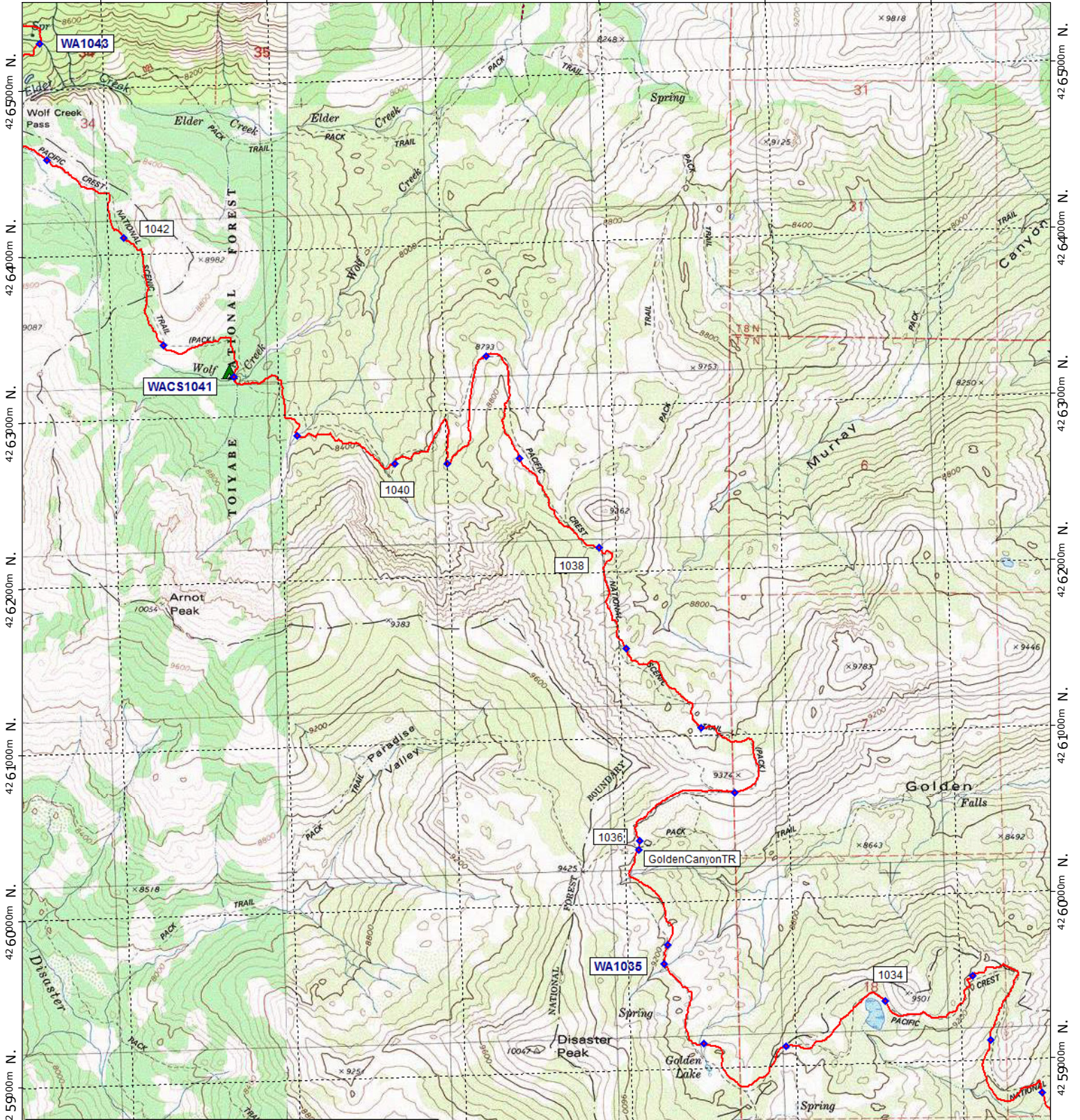


contour interval 80 feet
1:31,680 1" = 1/2 mile
Copyright 2011 Halfmile Media
www.pctmap.net



California Section J - Page 3

259000m E. 260000m E. 261000m E. 262000m E. 263000m E. WGS84 Zone 11S 264000m E.



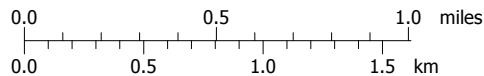
WA1035 - Seasonal stream - mi 1035.4 - 9123 ft
 GoldenCanyonTr - Golden Canyon Trail - mi 1036 - 9221 ft
 WACS1041 - Wolf Creek, campsites, water - mi 1041 - 8417 ft

Map created with **TOPOIC** ©2008 National Geographic, ©2007 Tele Atlas, Rel. 1/2007

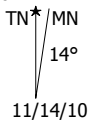
259000m E. 260000m E. 261000m E. 262000m E. 263000m E. WGS84 Zone 11S 264000m E.



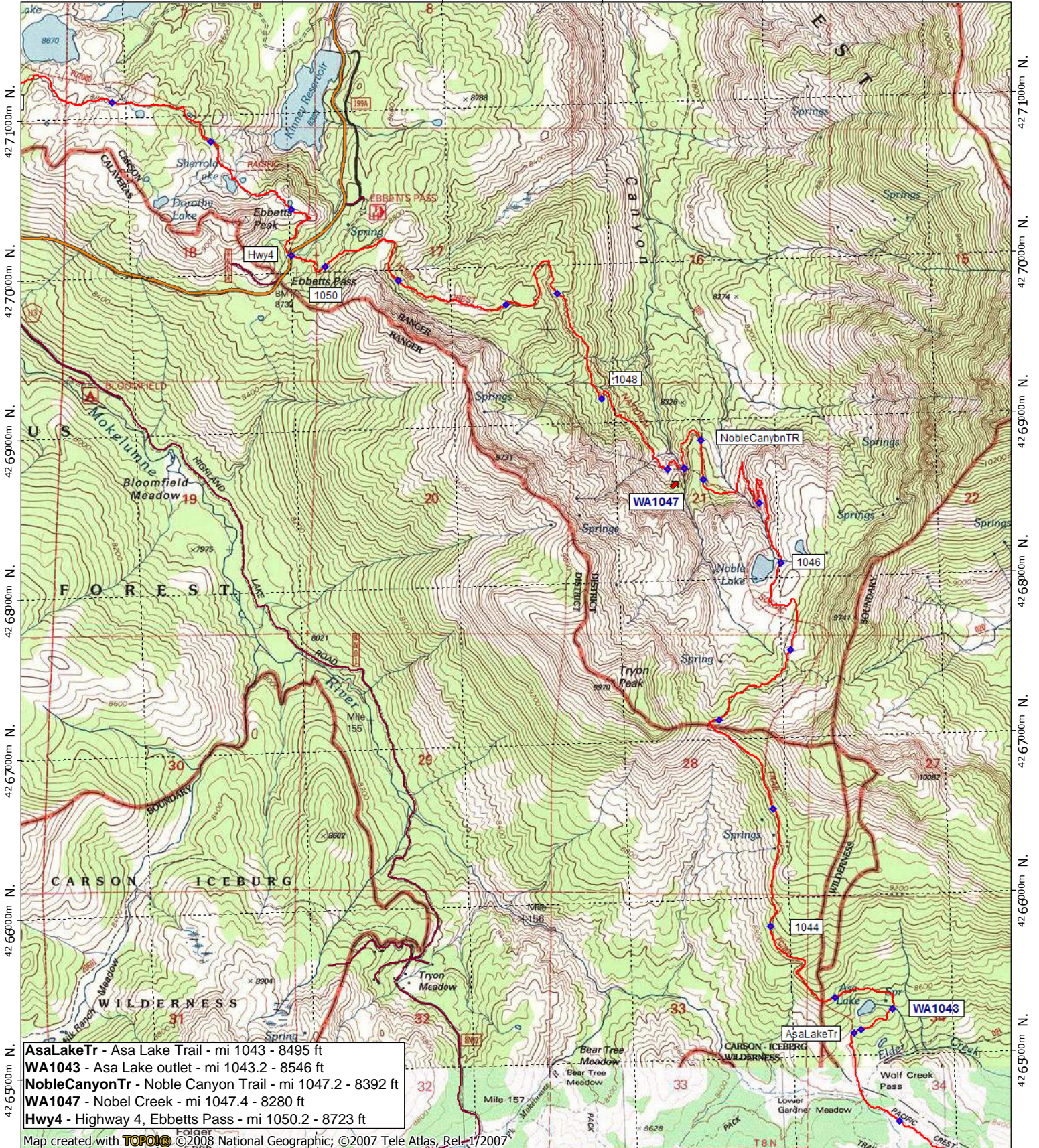
Support PCTA.org
 Leave No Trace



contour interval 80 feet
 1:31,680 1" = 1/2 mile
 Copyright 2011 Half mile Media
 www.pctmap.net



254000m E. 255000m E. 256000m E. 257000m E. 258000m E. WGS84 Zone 11S 259000m E.



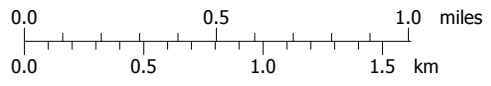
- AsaLakeTr** - Asa Lake Trail - mi 1043 - 8495 ft
- WA1043** - Asa Lake outlet - mi 1043.2 - 8546 ft
- NobleCanyonTr** - Noble Canyon Trail - mi 1047.2 - 8392 ft
- WA1047** - Nobel Creek - mi 1047.4 - 8280 ft
- Hwy4** - Highway 4, Ebbetts Pass - mi 1050.2 - 8723 ft

Map created with **TOPOM** ©2008 National Geographic; ©2007 Tele Atlas, Rel-1/2007

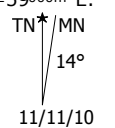
254000m E. 255000m E. 256000m E. 257000m E. 259000m E. WGS84 Zone 11S



Support PCTA.org
Leave No Trace

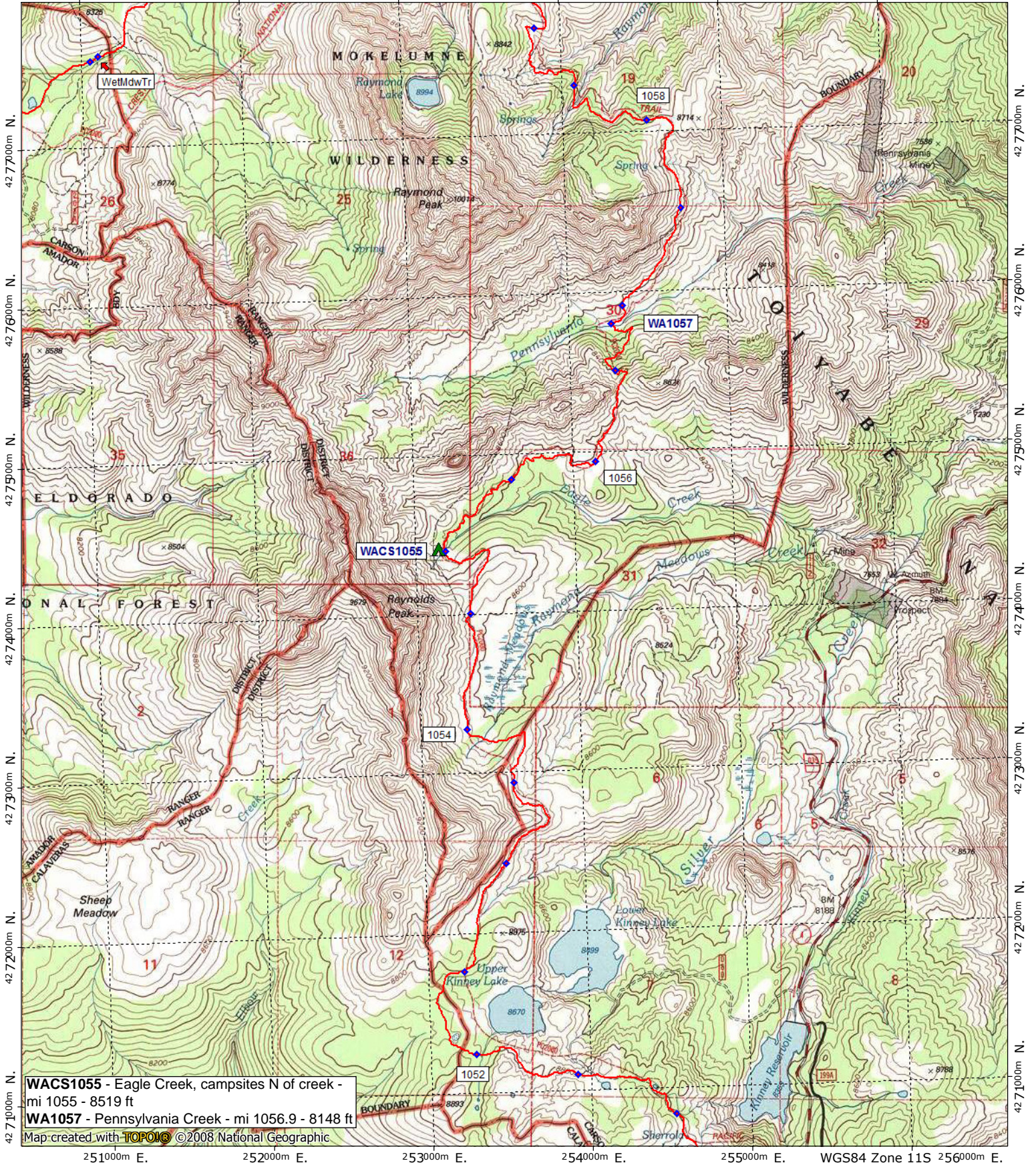


contour interval 40 feet
1:31,680 1" = 1/2 mile
Copyright 2011 Halfmile Media
www.pctmap.net



11/11/10

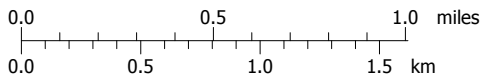
251000m E. 252000m E. 253000m E. 254000m E. 255000m E. WGS84 Zone 11S 256000m E.



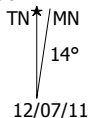
WACS1055 - Eagle Creek, campsites N of creek -
 mi 1055 - 8519 ft
 WA1057 - Pennsylvania Creek - mi 1056.9 - 8148 ft
 Map created with **TOPOIC** ©2008 National Geographic



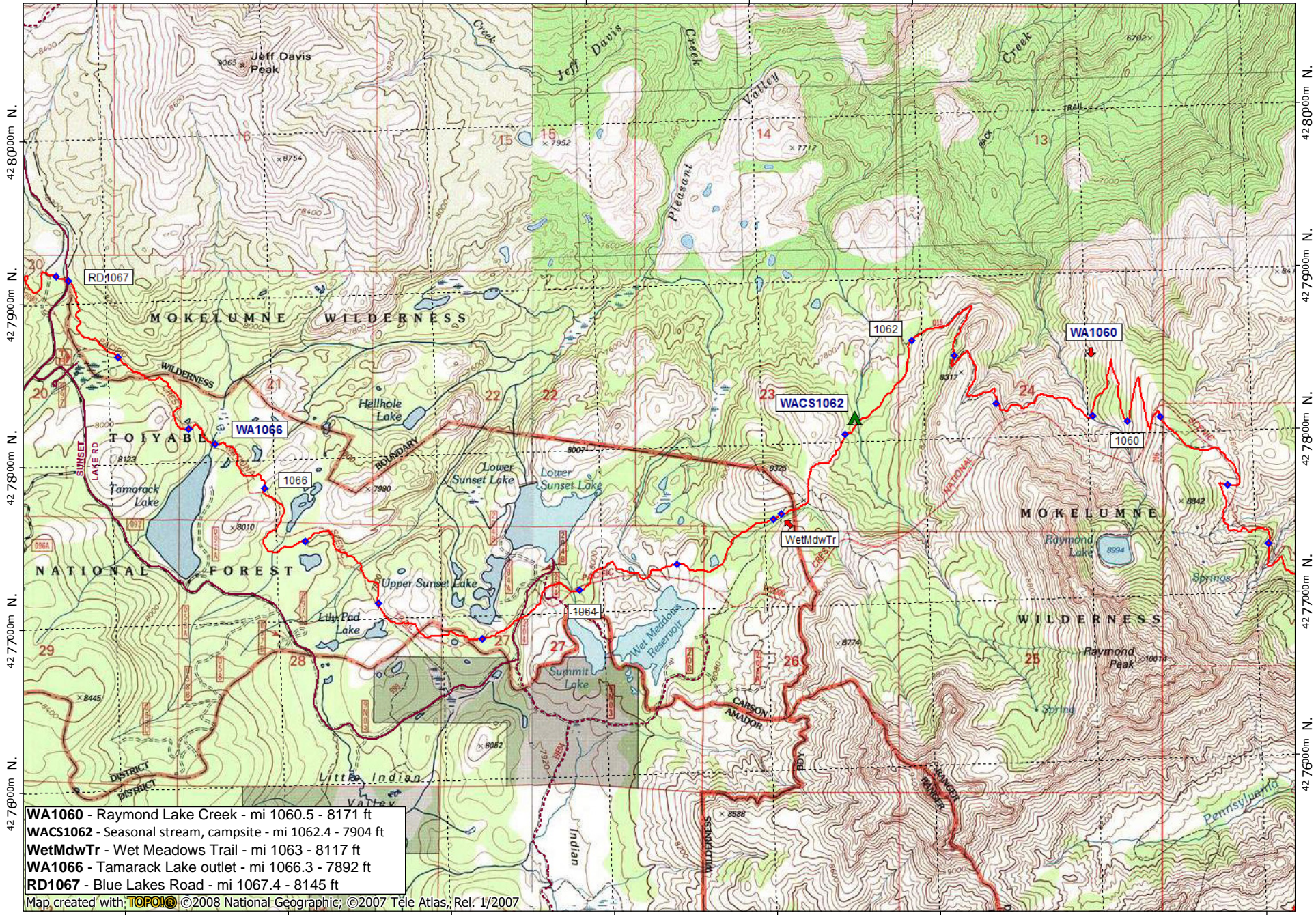
Support PCTA.org
 Leave No Trace



contour interval 40 feet
 1:31,680 1" = 1/2 mile
 Copyright 2012 Halfmile Media
 www.pctmap.net



247000m E. 248000m E. 249000m E. 250000m E. 251000m E. 252000m E. WGS84 Zone 11S 254000m E.

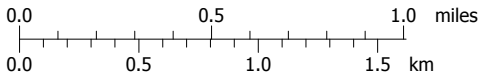


- WA1060 - Raymond Lake Creek - mi 1060.5 - 8171 ft
- WACS1062 - Seasonal stream, campsite - mi 1062.4 - 7904 ft
- WetMdwTr - Wet Meadows Trail - mi 1063 - 8117 ft
- WA1066 - Tamarack Lake outlet - mi 1066.3 - 7892 ft
- RD1067 - Blue Lakes Road - mi 1067.4 - 8145 ft

Map created with **TOPOMAP** ©2008 National Geographic; ©2007 Tele Atlas; Rel. 1/2007

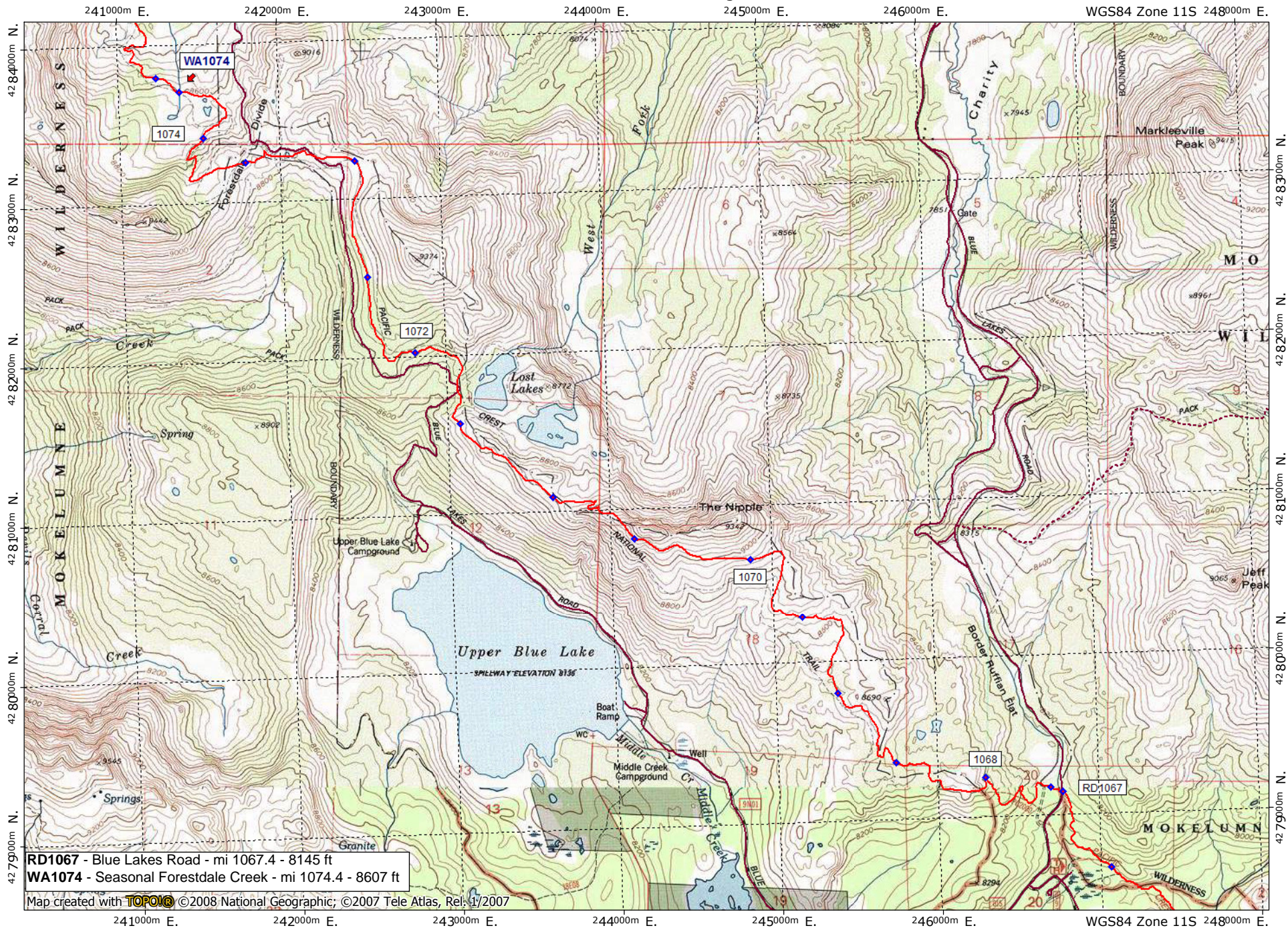


Support PCTA.org
Leave No Trace



contour interval 40 feet
 1:31,680 1" = 1/2 mile
 Copyright 2011 Halfmile Media
 www.pctmap.net

TN MN
 14°
 11/11/10

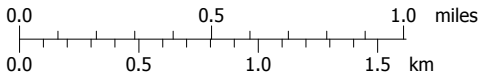


RD1067 - Blue Lakes Road - mi 1067.4 - 8145 ft
WA1074 - Seasonal Forestdale Creek - mi 1074.4 - 8607 ft

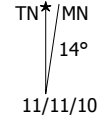
Map created with **TOPOMAP** ©2008 National Geographic; ©2007 Tele Atlas, Rel: 1/2007



Support PCTA.org
 Leave No Trace

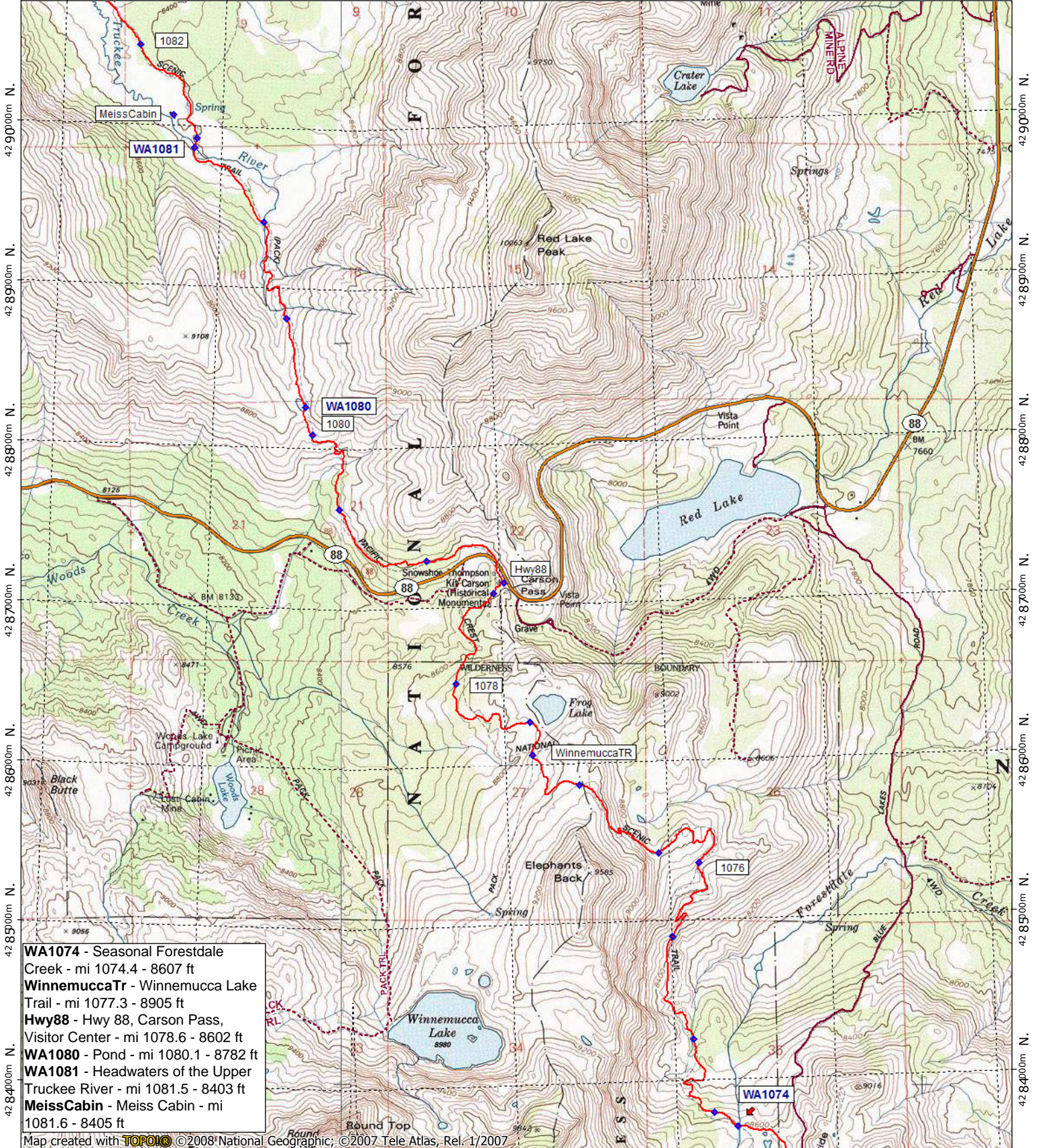


contour interval 40 feet
 1:31,680 1" = 1/2 mile
 Copyright 2011 Halfmile Media
 www.pctmap.net



11/11/10

759000m E. 760000m E. 240000m E. 241000m E. WGS84 Zone 11S 243000m E.



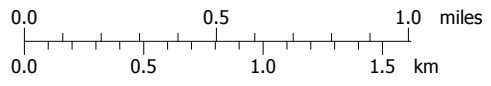
- WA1074** - Seasonal Forestdale Creek - mi 1074.4 - 8607 ft
- WinnemuccaTr** - Winnemucca Lake Trail - mi 1077.3 - 8905 ft
- Hwy88** - Hwy 88, Carson Pass, Visitor Center - mi 1078.6 - 8602 ft
- WA1080** - Pond - mi 1080.1 - 8782 ft
- WA1081** - Headwaters of the Upper Truckee River - mi 1081.5 - 8403 ft
- MeissCabin** - Meiss Cabin - mi 1081.6 - 8405 ft

Map created with **TOPOLIC** ©2008 National Geographic; ©2007 Tele Atlas, Rel. 1/2007

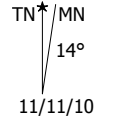
759000m E. WGS84 Zone 10S 761000m E. 239000m E. 240000m E. 241000m E. WGS84 Zone 11S 243000m E.

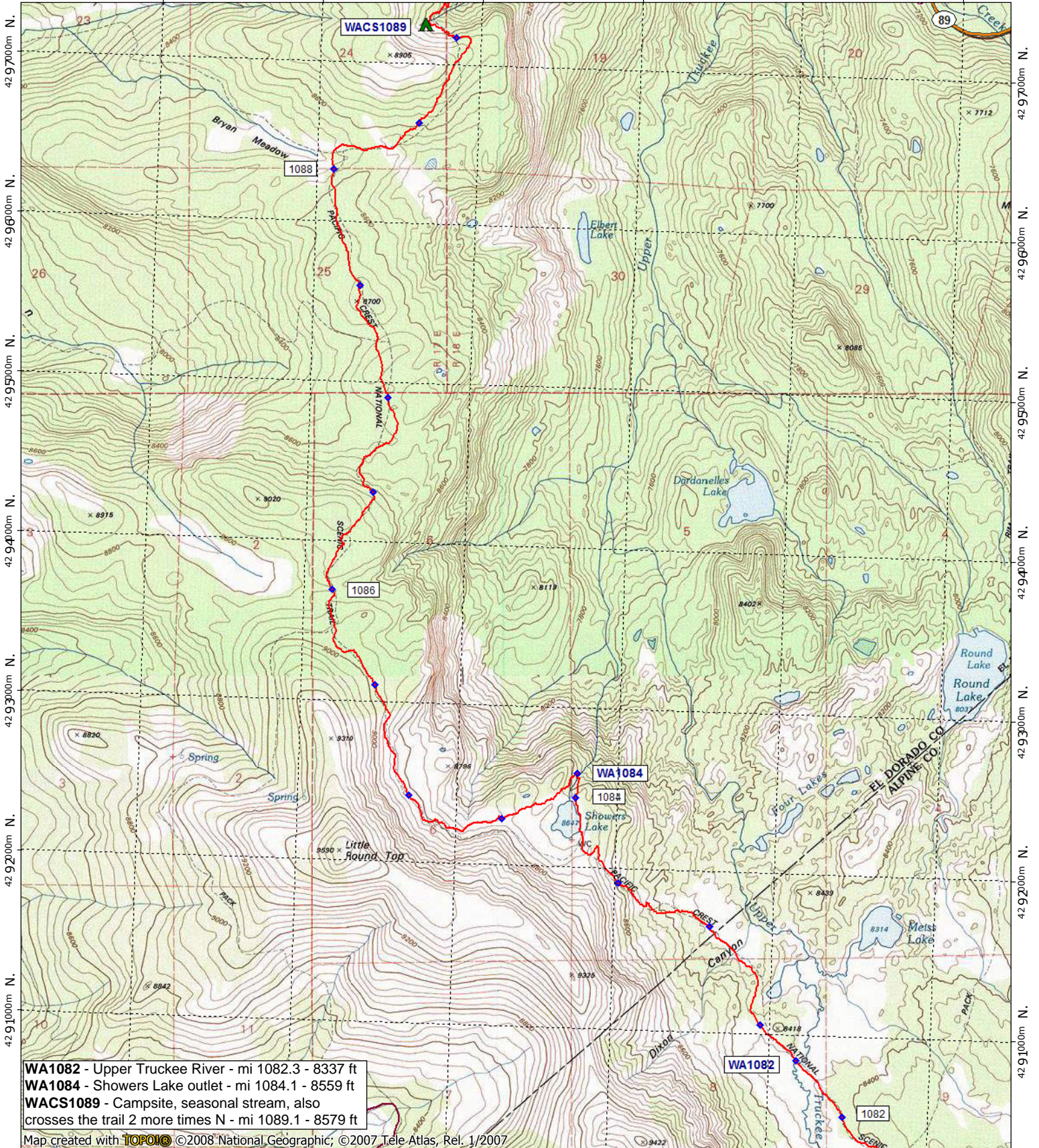


Support PCTA.org
Leave No Trace



contour interval 40 feet
 1:31,680 1" = 1/2 mile
 Copyright 2012 Halfmile Media
 www.pctmap.net



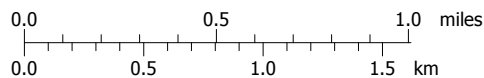


WA1082 - Upper Truckee River - mi 1082.3 - 8337 ft
WA1084 - Showers Lake outlet - mi 1084.1 - 8559 ft
WACS1089 - Campsite, seasonal stream, also crosses the trail 2 more times N - mi 1089.1 - 8579 ft

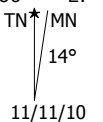
Map created with **TOPOLIC** ©2008 National Geographic; ©2007 Tele Atlas, Rel. 1/2007



Support PCTA.org
Leave No Trace



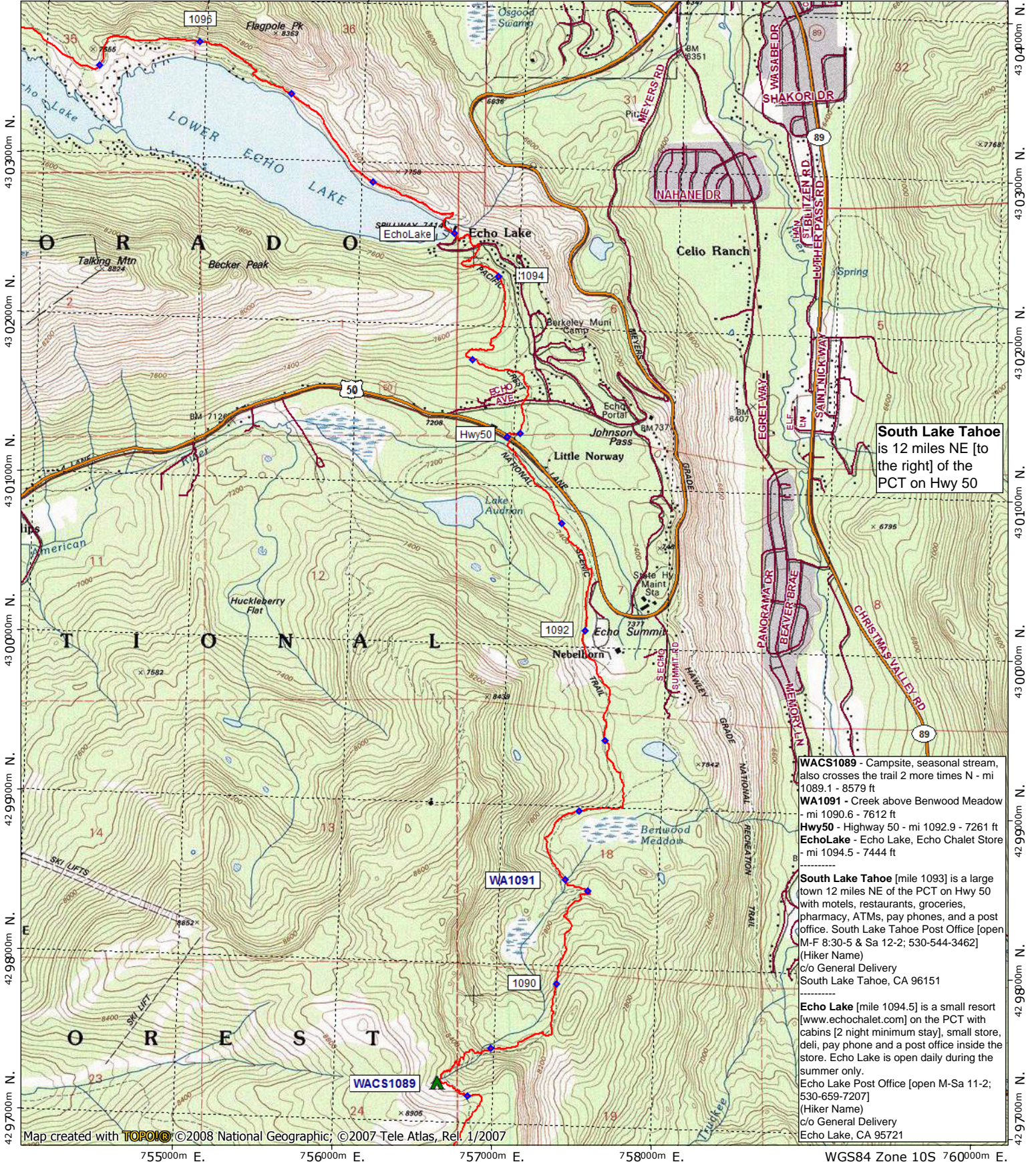
contour interval 40 feet
 1:31,680 1" = 1/2 mile
 Copyright 2011 Halfmile Media
 www.pctmap.net



11/11/10

California Section J - Page 10

754000m E. 755000m E. 756000m E. 757000m E. 758000m E. WGS84 Zone 10S 760000m E.



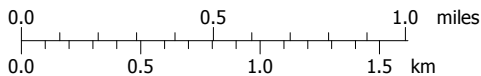
South Lake Tahoe is 12 miles NE [to the right] of the PCT on Hwy 50

- WACS1089** - Campsite, seasonal stream, also crosses the trail 2 more times N - mi 1089.1 - 8579 ft
- WA1091** - Creek above Benwood Meadow - mi 1090.6 - 7612 ft
- Hwy50** - Highway 50 - mi 1092.9 - 7261 ft
- EchoLake** - Echo Lake, Echo Chalet Store - mi 1094.5 - 7444 ft
- South Lake Tahoe** [mile 1093] is a large town 12 miles NE of the PCT on Hwy 50 with motels, restaurants, groceries, pharmacy, ATMs, pay phones, and a post office. South Lake Tahoe Post Office [open M-F 8:30-5 & Sa 12-2; 530-544-3462] (Hiker Name) c/o General Delivery South Lake Tahoe, CA 96151
- Echo Lake** [mile 1094.5] is a small resort [www.echochalet.com] on the PCT with cabins [2 night minimum stay], small store, deli, pay phone and a post office inside the store. Echo Lake is open daily during the summer only. Echo Lake Post Office [open M-Sa 11-2; 530-659-7207] (Hiker Name) c/o General Delivery Echo Lake, CA 95721

Map created with **TOPOLIO** ©2008 National Geographic; ©2007 Tele Atlas, Rel. 1/2007



Support PCTA.org
Leave No Trace



contour interval 40 feet
1:31,680 1" = 1/2 mile
Copyright 2011 Halfmile Media
www.pctmap.net

