

Glen Aulin may be the last water northbound until WA0956 [McCabe Creek] in 8 miles.

California Section I - 76 miles
 Start - Hwy 120 [Tuolumne Meadow], mile 942.5
 End - Hwy 108 [Sonora Pass], mile 1018.5
 Elevation Gain +14,167'
 Elevation Loss -13,102'
 Elevation Change +1,065'

YoungLakeTr - Young Lakes Trail - mi 944.6 - 8669 ft
GlenAulin - Glen Aulin camp, bear lockers, may be the last water until McCabe Creek in 8 miles - mi 948.4 - 7899 ft

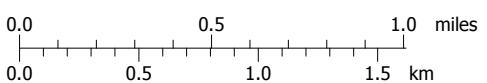
These maps are provided as a free service to PCT hikers. I believe the information is accurate but they may contain errors. The maps are distributed in the hope that they will be useful, but WITHOUT ANY WARRANTY; without even the implied warranty of MERCHANTABILITY or FITNESS FOR A PARTICULAR PURPOSE.
 -Halfmile

No camping within 4 miles of Tuolumne Meadows.

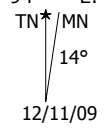
Map created with **TOPOLIO** ©2008 National Geographic; ©2007 Tele Atlas, Rel. 1/2007



Support PCTA.org
 Leave No Trace

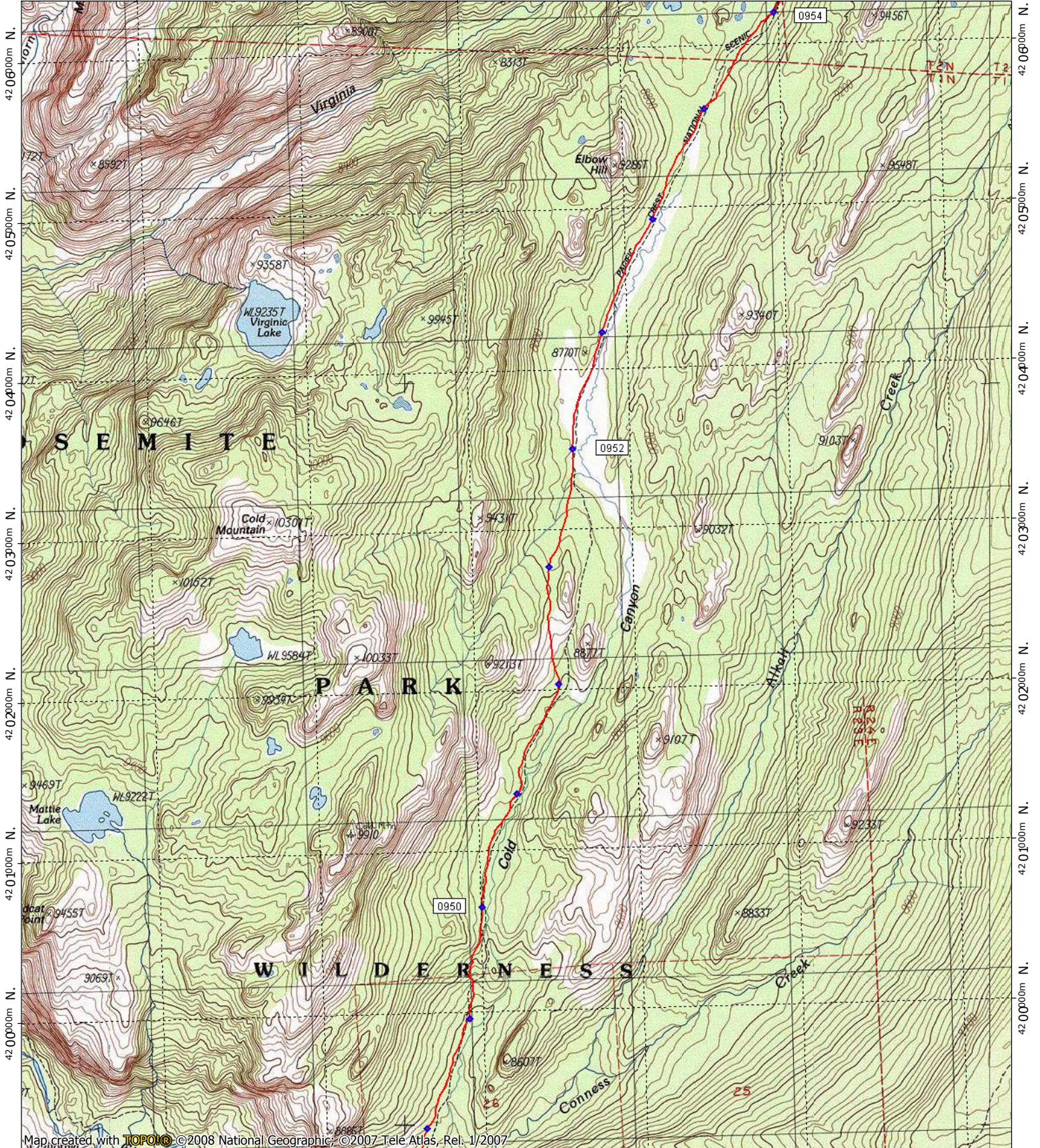


contour interval 40 feet
 1:31,680 1" = 1/2 mile
 Copyright 2012 Halfmile Media
 www.pctmap.net



12/11/09

286000m E. 287000m E. 288000m E. 289000m E. WGS84 Zone 11S 291000m E.

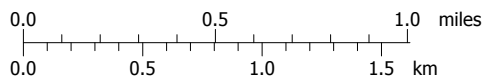


Map created with **TOPOLIC** ©2008 National Geographic, ©2007 Tele Atlas, Rel. 1/2007

286000m E. 287000m E. 288000m E. 289000m E. WGS84 Zone 11S 291000m E.



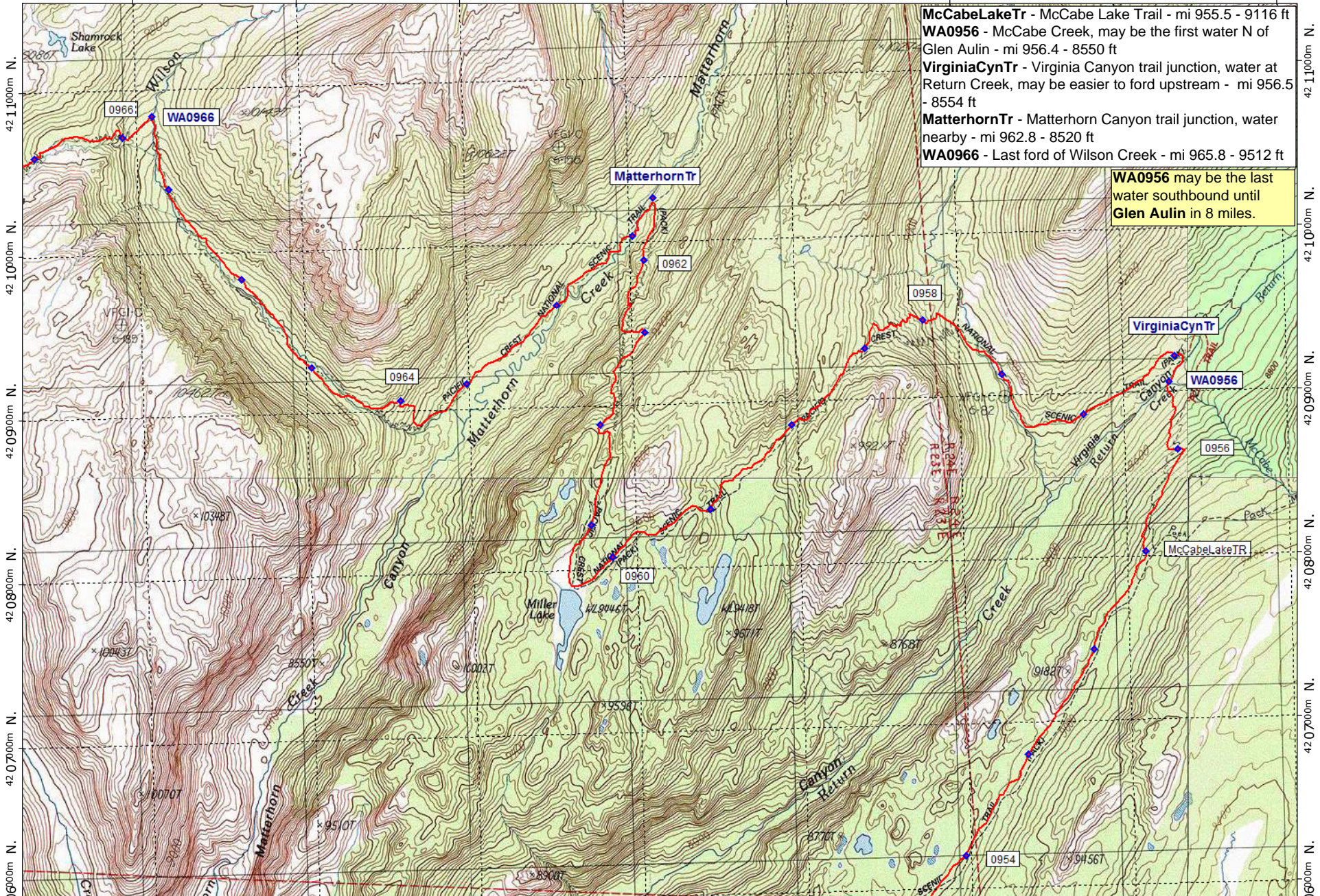
Support PCTA.org
Leave No Trace



contour interval 40 feet
1:31,680 1" = 1/2 mile
Copyright 2011 Halfmile Media
www.pctmap.net



285000m E. 286000m E. 287000m E. 288000m E. 289000m E. 290000m E. WGS84 Zone 11S 292000m E.



McCabeLakeTr - McCabe Lake Trail - mi 955.5 - 9116 ft
WA0956 - McCabe Creek, may be the first water N of Glen Aulin - mi 956.4 - 8550 ft
VirginiaCynTr - Virginia Canyon trail junction, water at Return Creek, may be easier to ford upstream - mi 956.5 - 8554 ft
MatterhornTr - Matterhorn Canyon trail junction, water nearby - mi 962.8 - 8520 ft
WA0966 - Last ford of Wilson Creek - mi 965.8 - 9512 ft

WA0956 may be the last water southbound until **Glen Aulin** in 8 miles.

Map created with **TOPOLIC** ©2008 National Geographic; ©2007 Tele Atlas, Rel: 1/2007

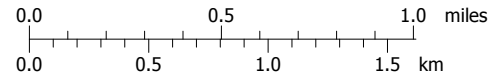
285000m E. 286000m E. 287000m E. 288000m E. 289000m E. 290000m E. 291000m E.

42.06000m N.
42.07000m N.
42.08000m N.
42.09000m N.
42.10000m N.
42.11000m N.

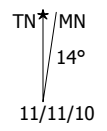
42.06000m N.
42.07000m N.
42.08000m N.
42.09000m N.
42.10000m N.
42.11000m N.



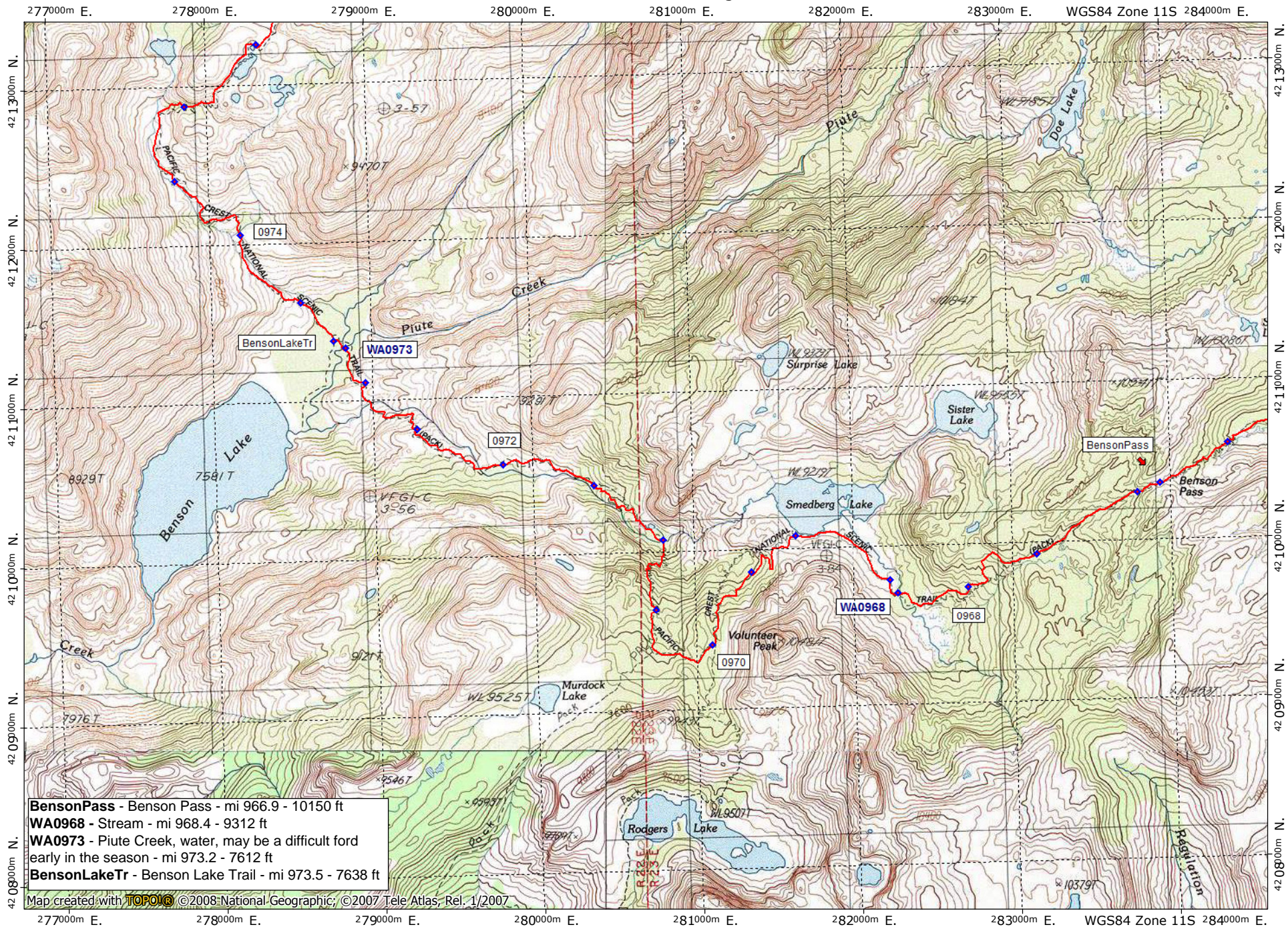
Support PCTA.org
Leave No Trace



contour interval 40 feet
 1:31,680 1" = 1/2 mile
 Copyright 2011 Halfmile Media
www.pctmap.net



11/11/10

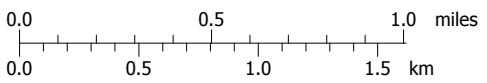


BensonPass - Benson Pass - mi 966.9 - 10150 ft
WA0968 - Stream - mi 968.4 - 9312 ft
WA0973 - Piute Creek, water, may be a difficult ford early in the season - mi 973.2 - 7612 ft
BensonLakeTr - Benson Lake Trail - mi 973.5 - 7638 ft

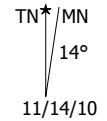
Map created with **TOPOLIC** ©2008 National Geographic; ©2007 Tele Atlas, Rel. 1/2007

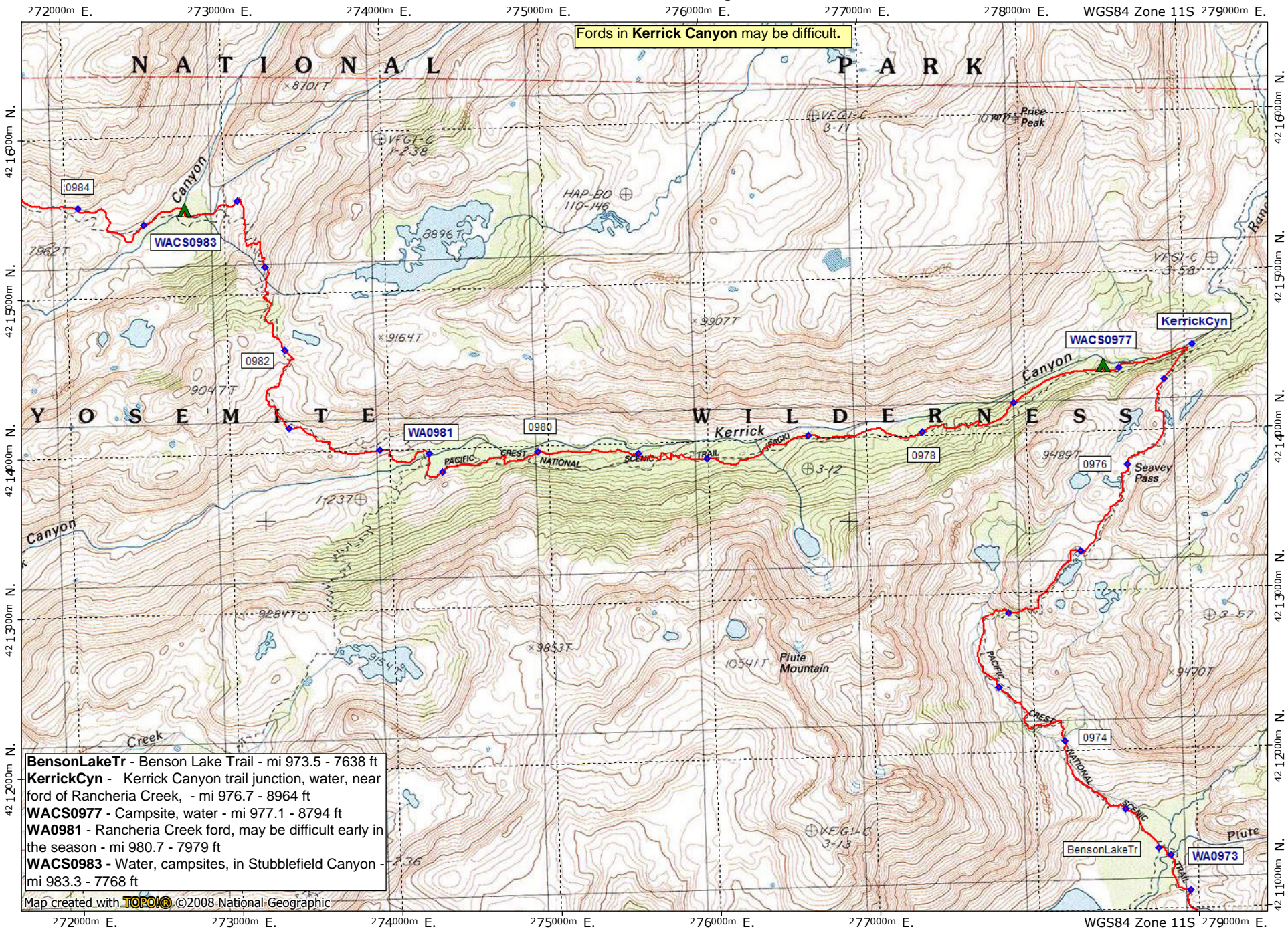


Support PCTA.org
 Leave No Trace



contour interval 40 feet
 1:31,680 1" = 1/2 mile
 Copyright 2011 Halfmile Media
 www.pctmap.net



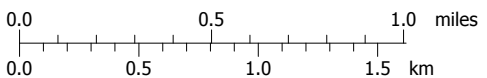


BensonLakeTr - Benson Lake Trail - mi 973.5 - 7638 ft
KerrickCyn - Kerrick Canyon trail junction, water, near ford of Rancheria Creek, - mi 976.7 - 8964 ft
WACS0977 - Campsite, water - mi 977.1 - 8794 ft
WA0981 - Rancheria Creek ford, may be difficult early in the season - mi 980.7 - 7979 ft
WACS0983 - Water, campsites, in Stubblefield Canyon - mi 983.3 - 7768 ft

Map created with **TOPOM** ©2008 National Geographic



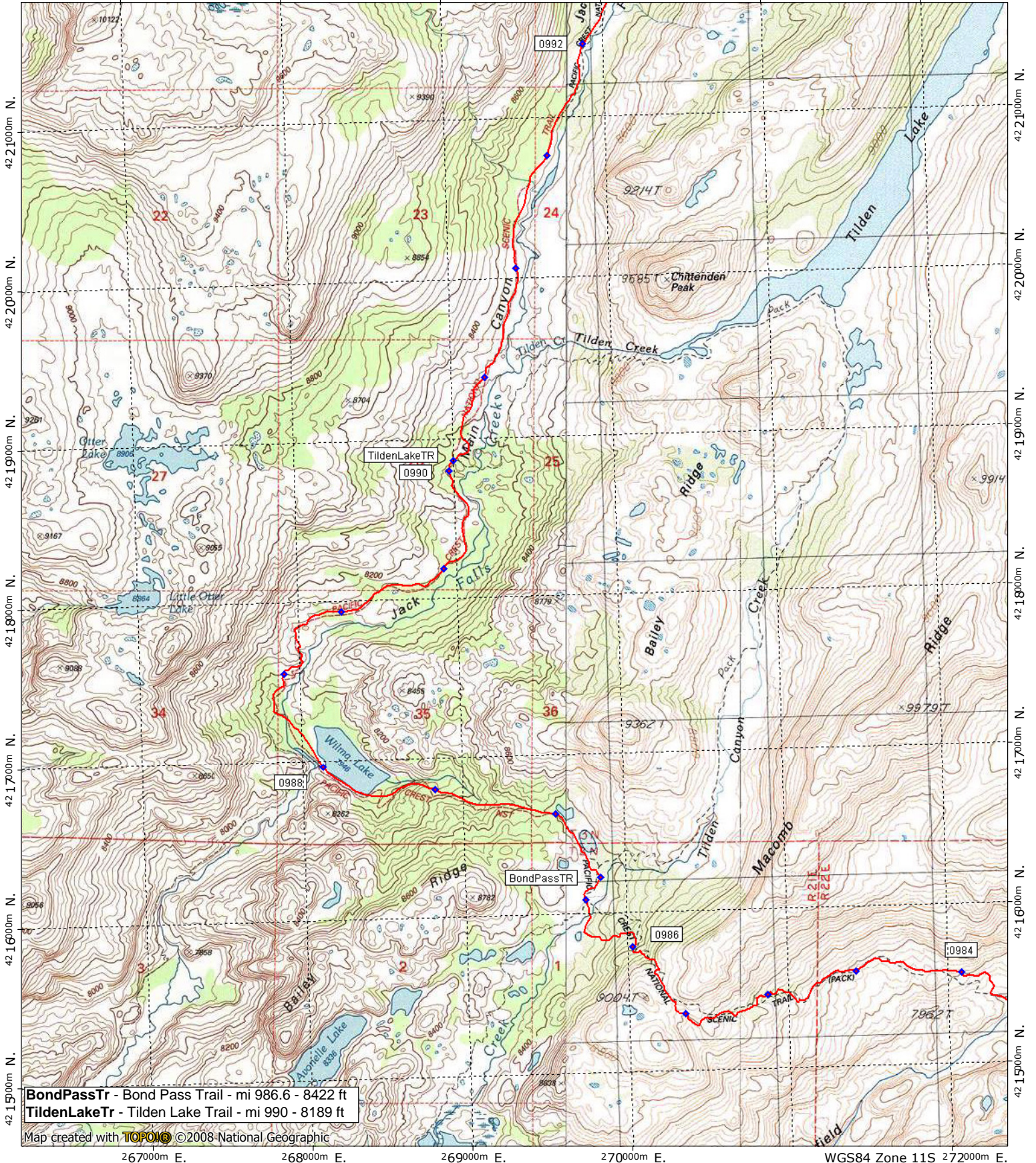
Support PCTA.org
Leave No Trace



contour interval 40 feet
 1:31,680 1" = 1/2 mile
 Copyright 2011 Halfmile Media
 www.pctmap.net

TN ↑ MN
 14°
 11/14/10

267000m E. 268000m E. 269000m E. 270000m E. 271000m E. WGS84 Zone 11S 272000m E.

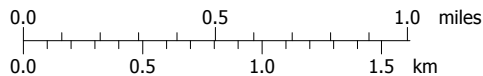


BondPasTr - Bond Pass Trail - mi 986.6 - 8422 ft
TildenLakeTr - Tilden Lake Trail - mi 990 - 8189 ft

Map created with **TOPOIC** ©2008-National Geographic



Support PCTA.org
 Leave No Trace

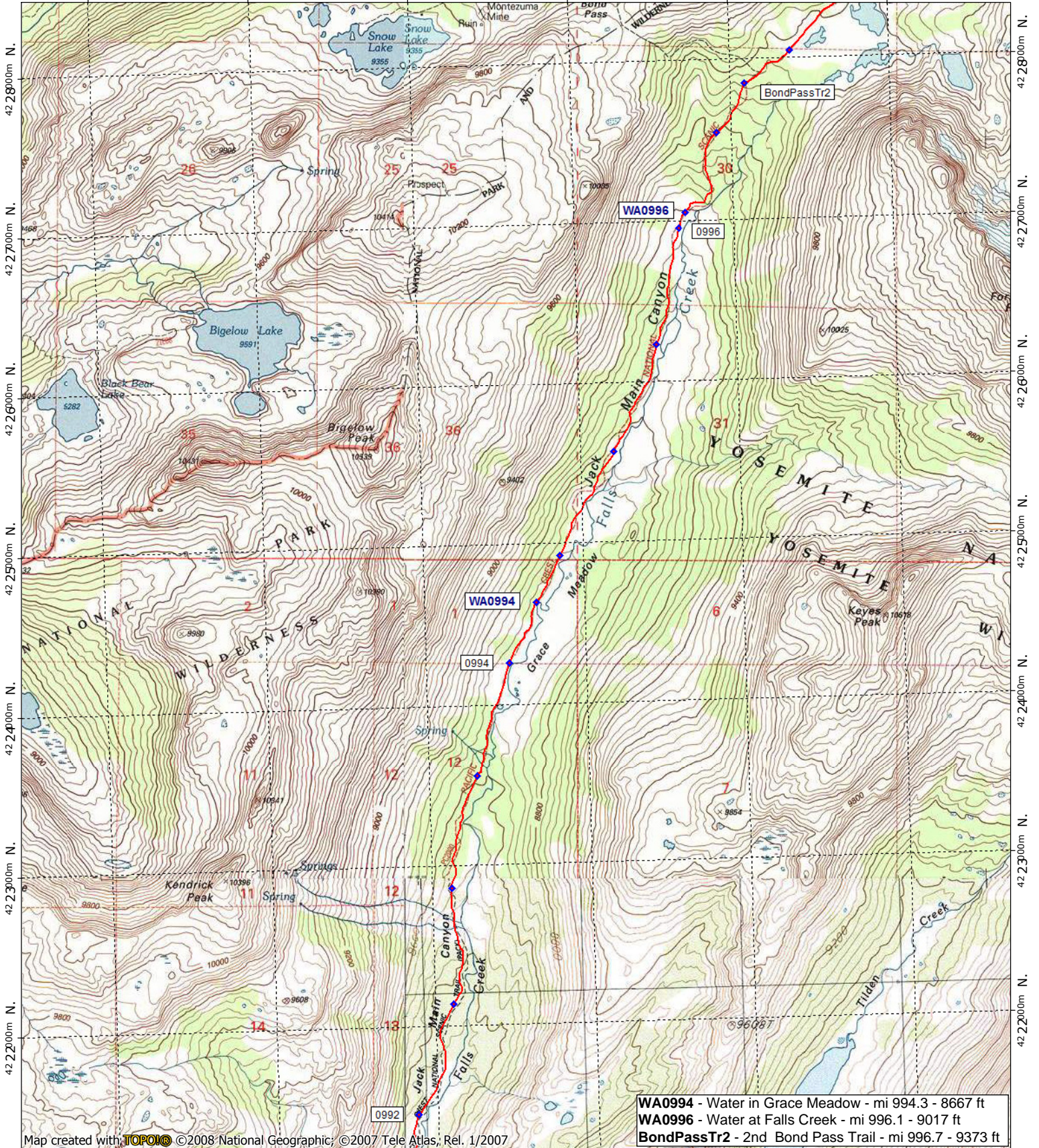


contour interval 40 feet
 1:31,680 1" = 1/2 mile
 Copyright 2011 Halfmile Media
 www.pctmap.net

TN MN
 14°
 12/11/09

California Section I - Page 7

268000m E. 269000m E. 270000m E. 271000m E. 272000m E. WGS84 Zone 11S 273000m E.

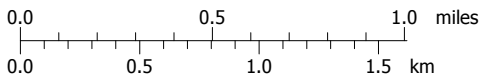


Map created with **TOPOLIC** ©2008 National Geographic; ©2007 Tele Atlas, Rel. 1/2007

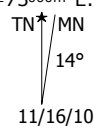
WA0994 - Water in Grace Meadow - mi 994.3 - 8667 ft
WA0996 - Water at Falls Creek - mi 996.1 - 9017 ft
BondPassTr2 - 2nd Bond Pass Trail - mi 996.7 - 9373 ft



Support PCTA.org
 Leave No Trace



contour interval 40 feet
 1:31,680 1" = 1/2 mile
 Copyright 2011 Halfmile Media
 www.pctmap.net

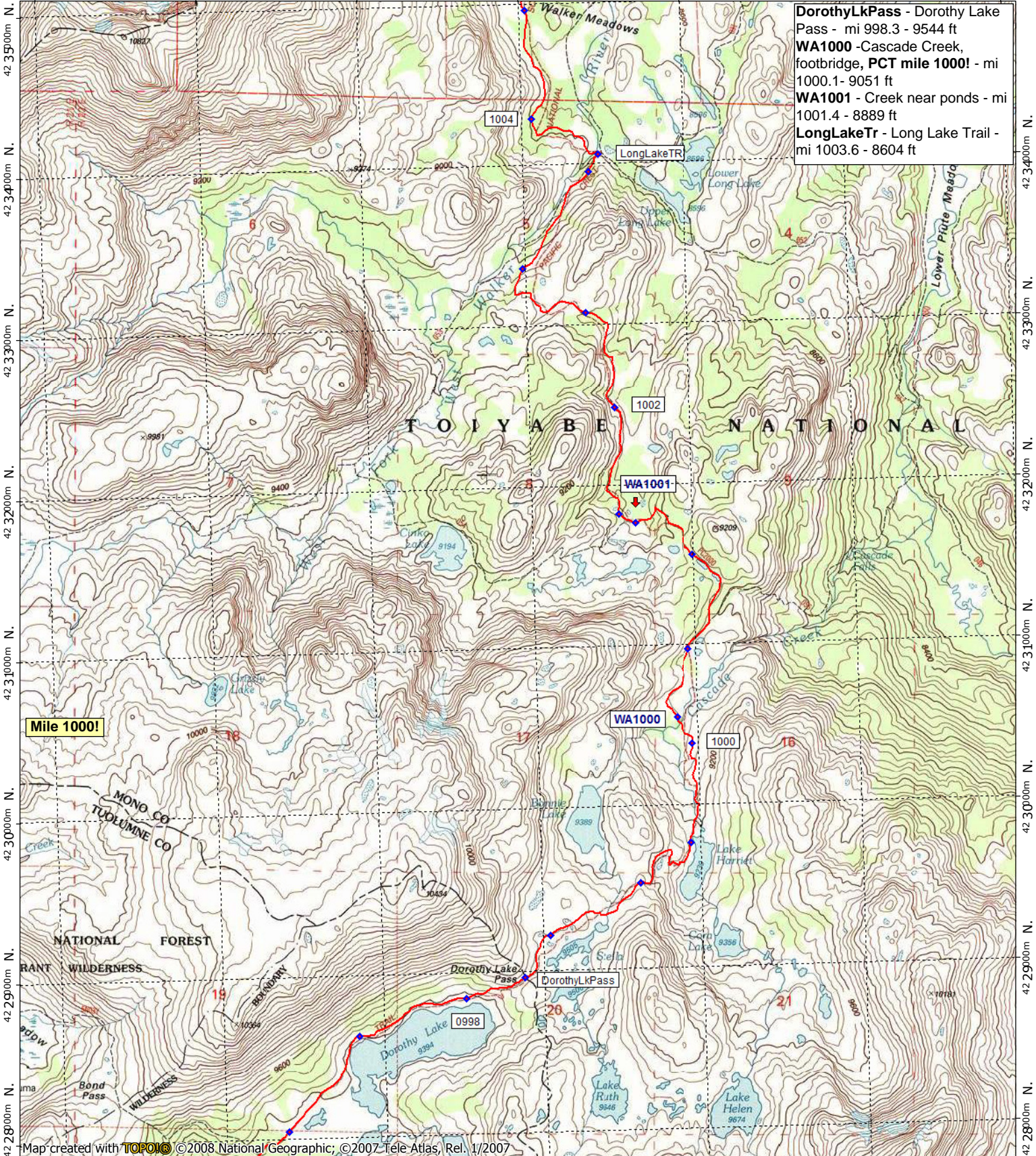


11/16/10

California Section I - Page 8

271000m E. 272000m E. 273000m E. 274000m E. 275000m E. WGS84 Zone 11S 277000m E.

DorothyLkPass - Dorothy Lake Pass - mi 998.3 - 9544 ft
WA1000 - Cascade Creek, footbridge, **PCT mile 1000!** - mi 1000.1- 9051 ft
WA1001 - Creek near ponds - mi 1001.4 - 8889 ft
LongLakeTr - Long Lake Trail - mi 1003.6 - 8604 ft

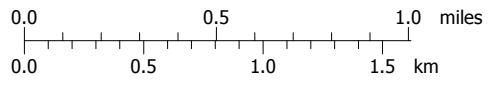


Mile 1000!

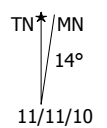
Map created with **TOPOIC** ©2008 National Geographic; ©2007 Tele Atlas, Rel. 1/2007



Support PCTA.org
 Leave No Trace

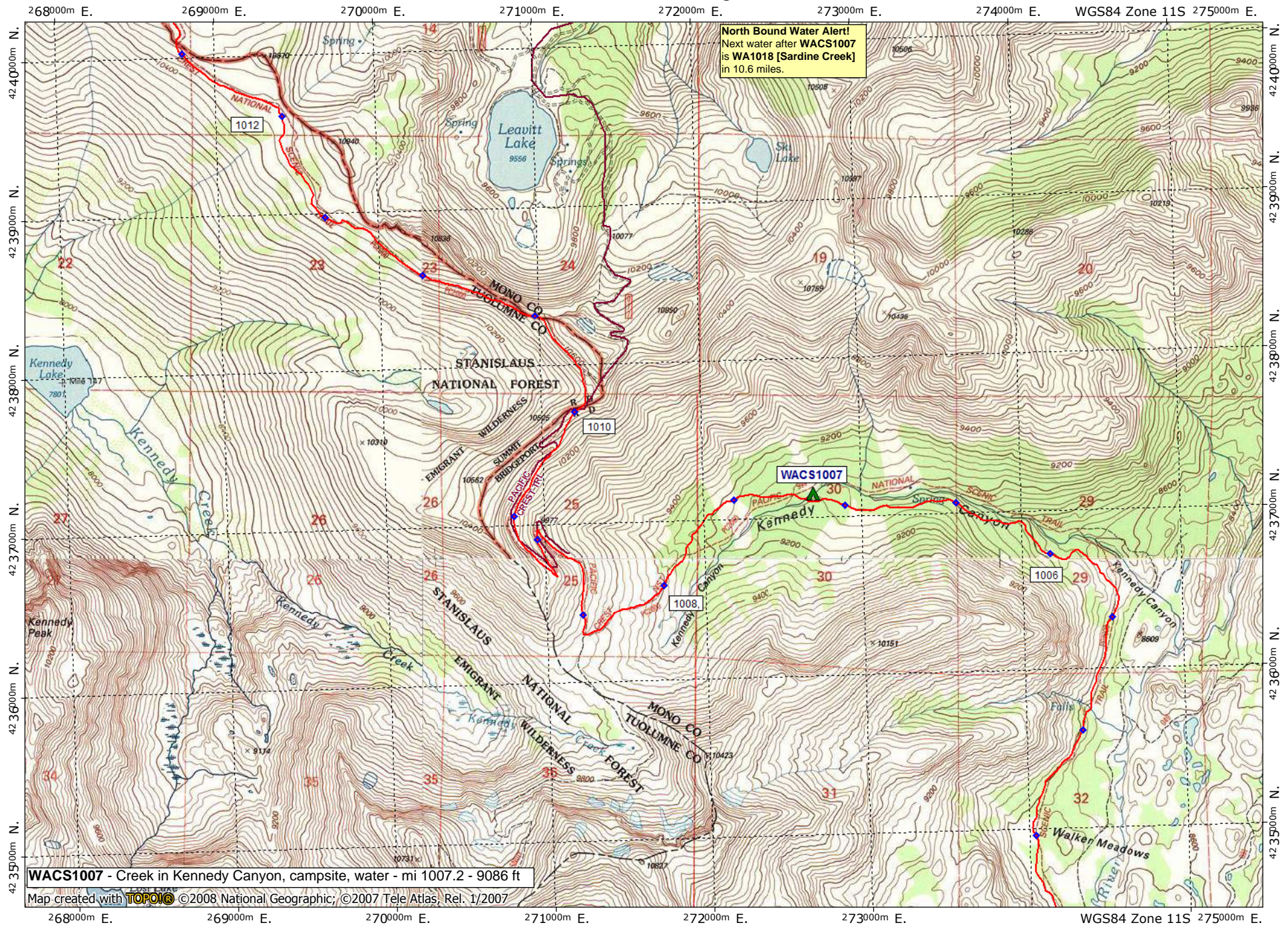


contour interval 40 feet
 1:31,680 1" = 1/2 mile
 Copyright 2011 Halfmile Media
 www.pctmap.net



11/11/10

California Section I - Page 9

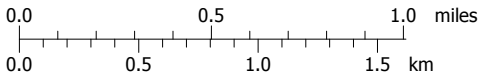


WACS1007 - Creek in Kennedy Canyon, campsite, water - mi 1007.2 - 9086 ft

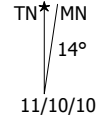
Map created with **TOPOM** ©2008 National Geographic; ©2007 Tele Atlas; Rel. 1/2007



Support PCTA.org
Leave No Trace



contour interval 40 & 80 feet
1:31,680 1" = 1/2 mile
Copyright 2011 Halfmile Media
www.pctmap.net



Northern Kennedy Meadows is 9.1 miles W on Hwy 108, then 1 mile S on Kennedy Meadows Rd

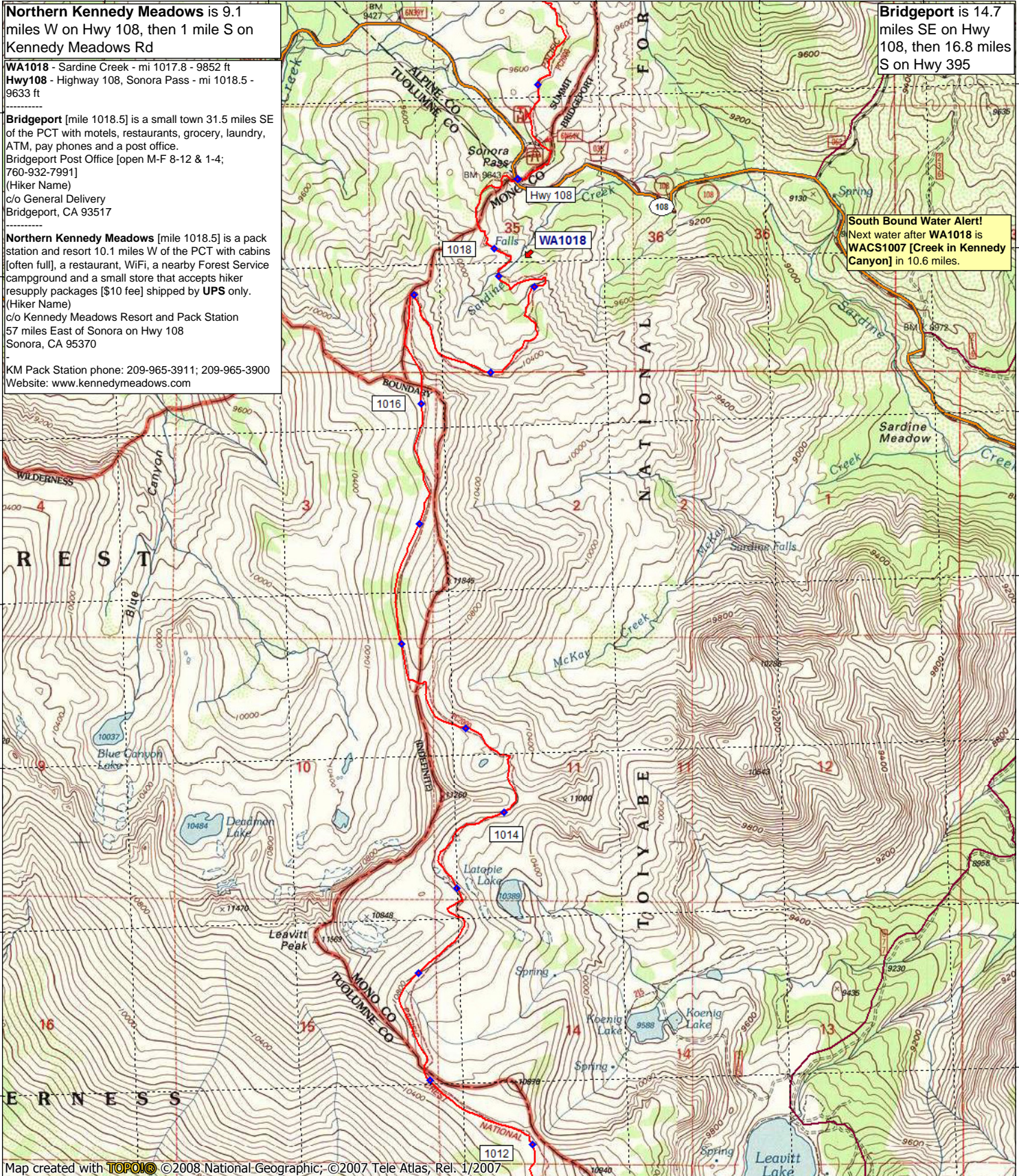
WA1018 - Sardine Creek - mi 1017.8 - 9852 ft
Hwy108 - Highway 108, Sonora Pass - mi 1018.5 - 9633 ft

Bridgeport [mile 1018.5] is a small town 31.5 miles SE of the PCT with motels, restaurants, grocery, laundry, ATM, pay phones and a post office.
 Bridgeport Post Office [open M-F 8-12 & 1-4; 760-932-7991]
 (Hiker Name)
 c/o General Delivery
 Bridgeport, CA 93517

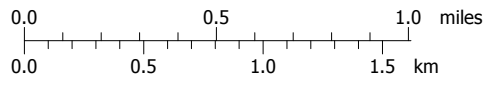
Northern Kennedy Meadows [mile 1018.5] is a pack station and resort 10.1 miles W of the PCT with cabins [often full], a restaurant, WiFi, a nearby Forest Service campground and a small store that accepts hiker resupply packages [\$10 fee] shipped by **UPS** only.
 (Hiker Name)
 c/o Kennedy Meadows Resort and Pack Station
 57 miles East of Sonora on Hwy 108
 Sonora, CA 95370
 KM Pack Station phone: 209-965-3911; 209-965-3900
 Website: www.kennedymeadows.com

Bridgeport is 14.7 miles SE on Hwy 108, then 16.8 miles S on Hwy 395

South Bound Water Alert!
 Next water after **WA1018** is **WACS1007** [Creek in Kennedy Canyon] in 10.6 miles.



Support PCTA.org
 Leave No Trace



contour interval 40 & 80 feet
 1:31,680 1" = 1/2 mile
 Copyright 2011 Halfmile Media
www.pctmap.net

