



# California Section I - Page 2

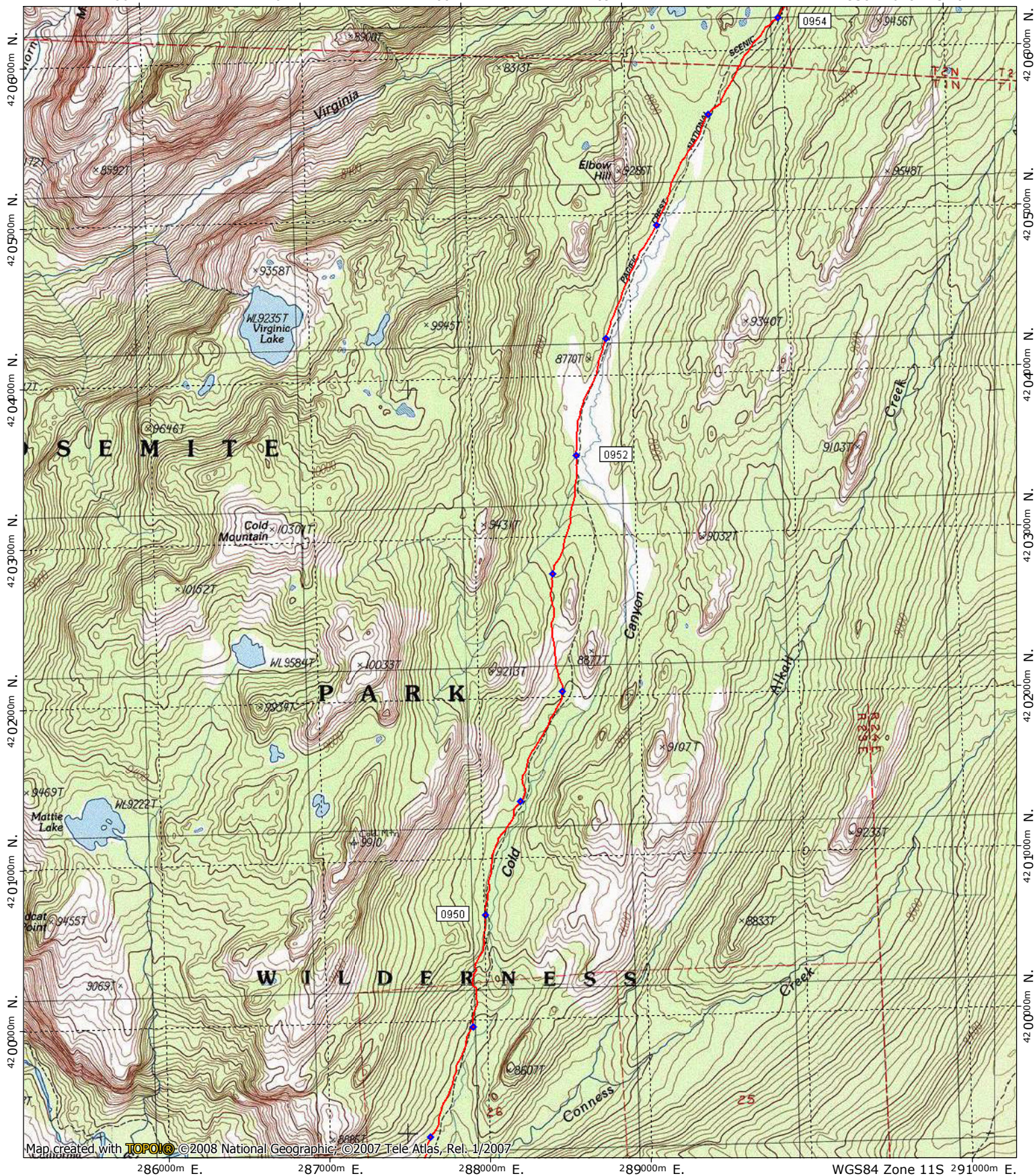
286000m E.

287000m E.

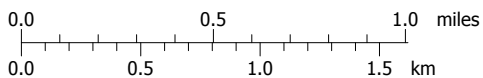
288000m E.

289000m E.

WGS84 Zone 11S 291000m E.



Support PCTA.org  
Leave No Trace

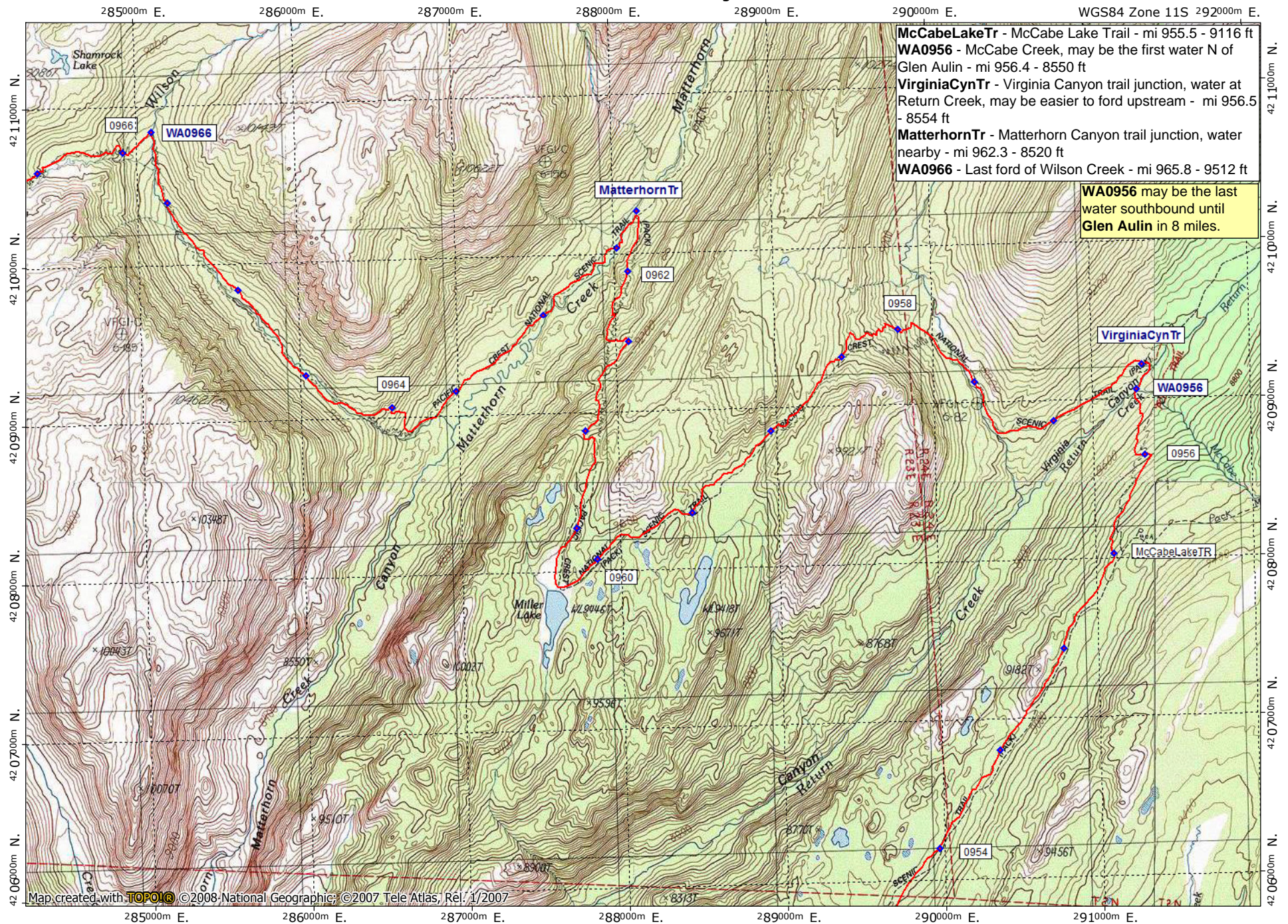


contour interval 40 feet  
1:31,680 1" = 1/2 mile  
Copyright 2011 Halfmile Media  
www.pctmap.net

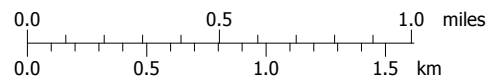
TN MN  
14°  
12/11/09



# California Section I - Page 3



Support [PCTA.org](http://PCTA.org)  
 Leave No Trace

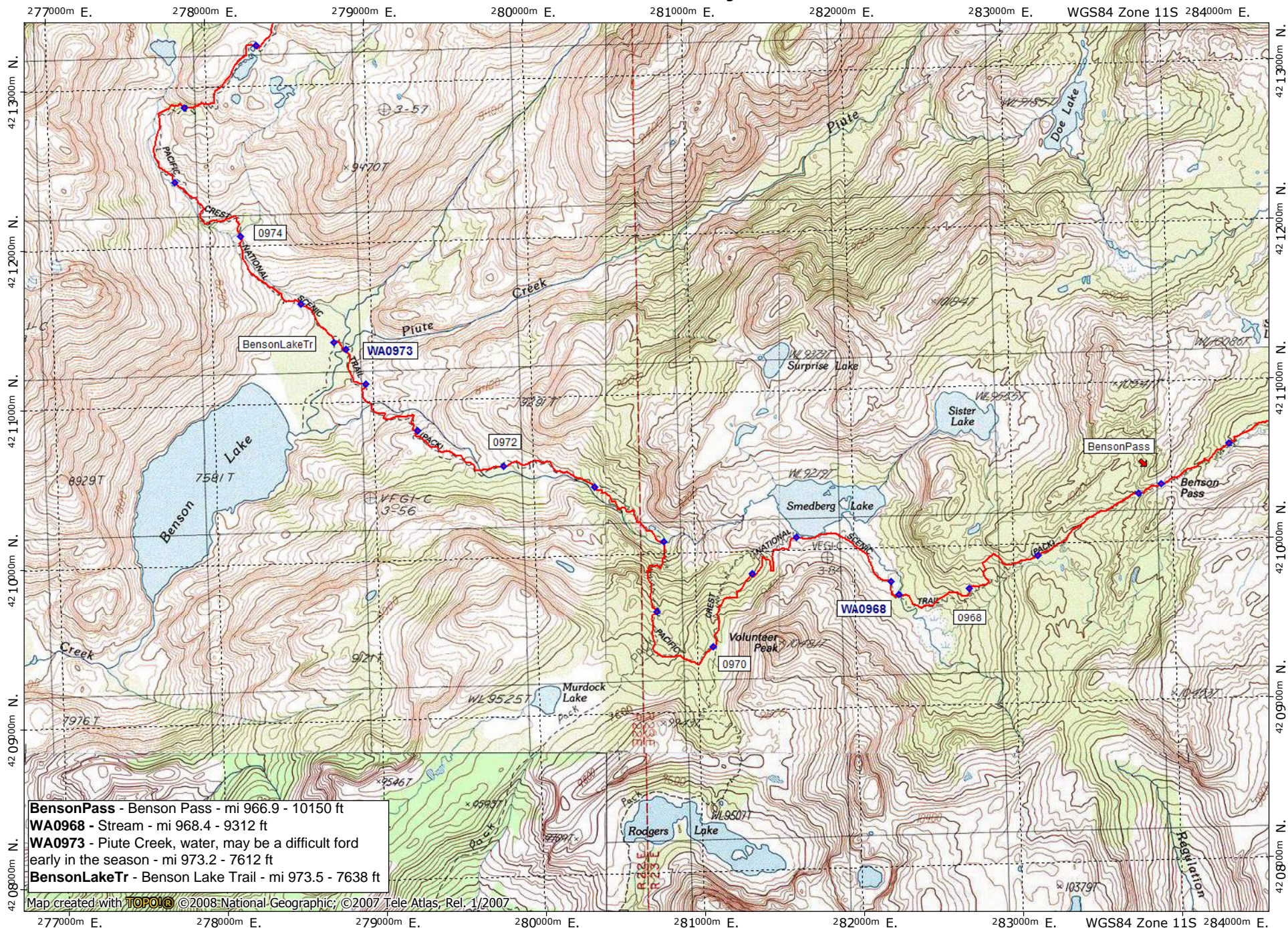


contour interval 40 feet  
 1:31,680 1" = 1/2 mile  
 Copyright 2011 Halfmile Media  
[www.pctmap.net](http://www.pctmap.net)

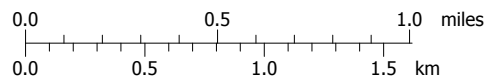
4/12

TN\* MN  
 14°  
 11/11/10





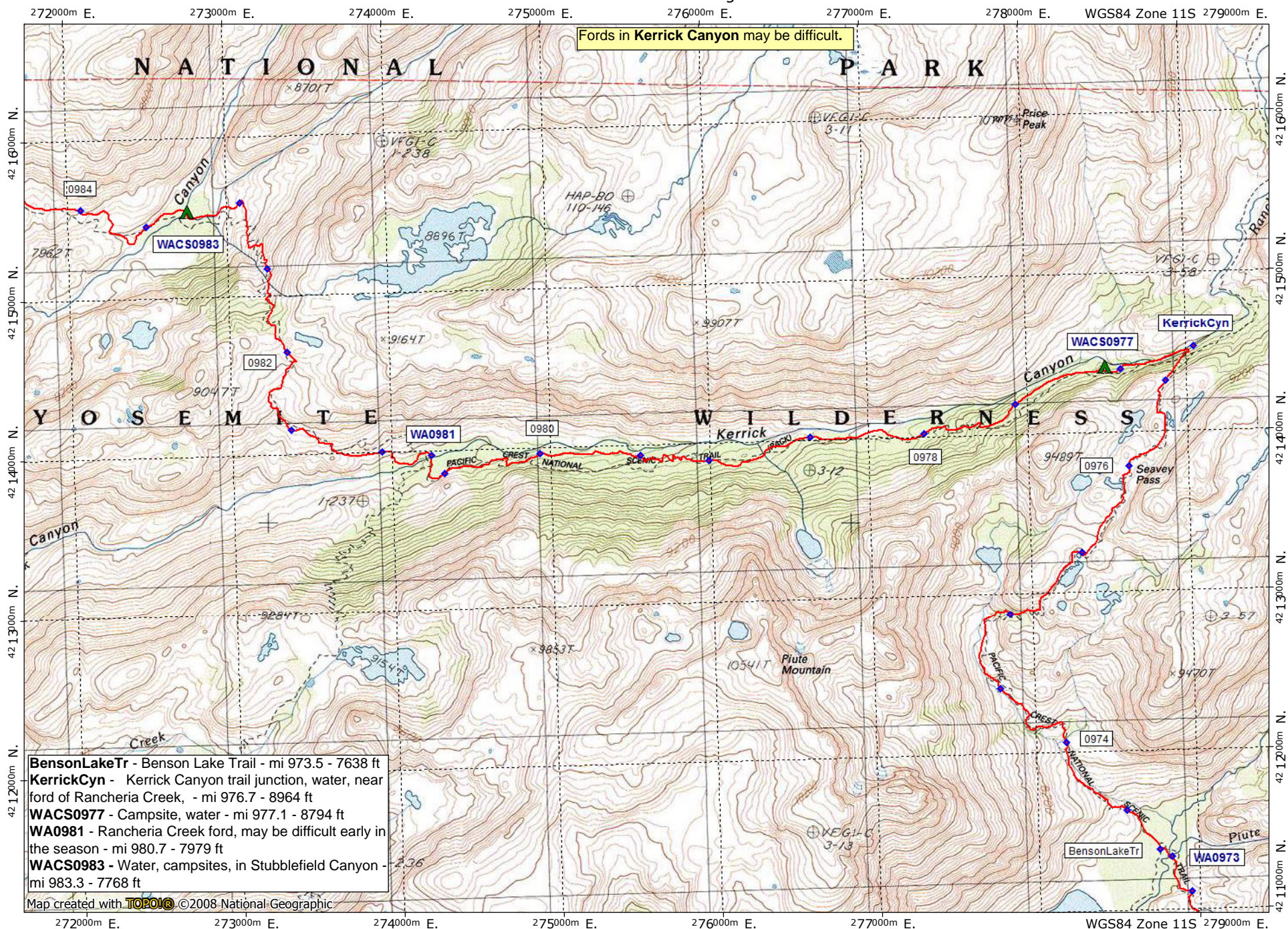
Support PCTA.org  
Leave No Trace



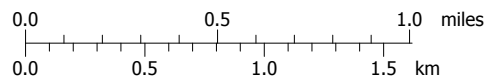
contour interval 40 feet  
1:31,680 1" = 1/2 mile  
Copyright 2011 Halfmile Media  
www.pctmap.net

TN MN  
14°  
11/14/10





Support PCTA.org  
Leave No Trace



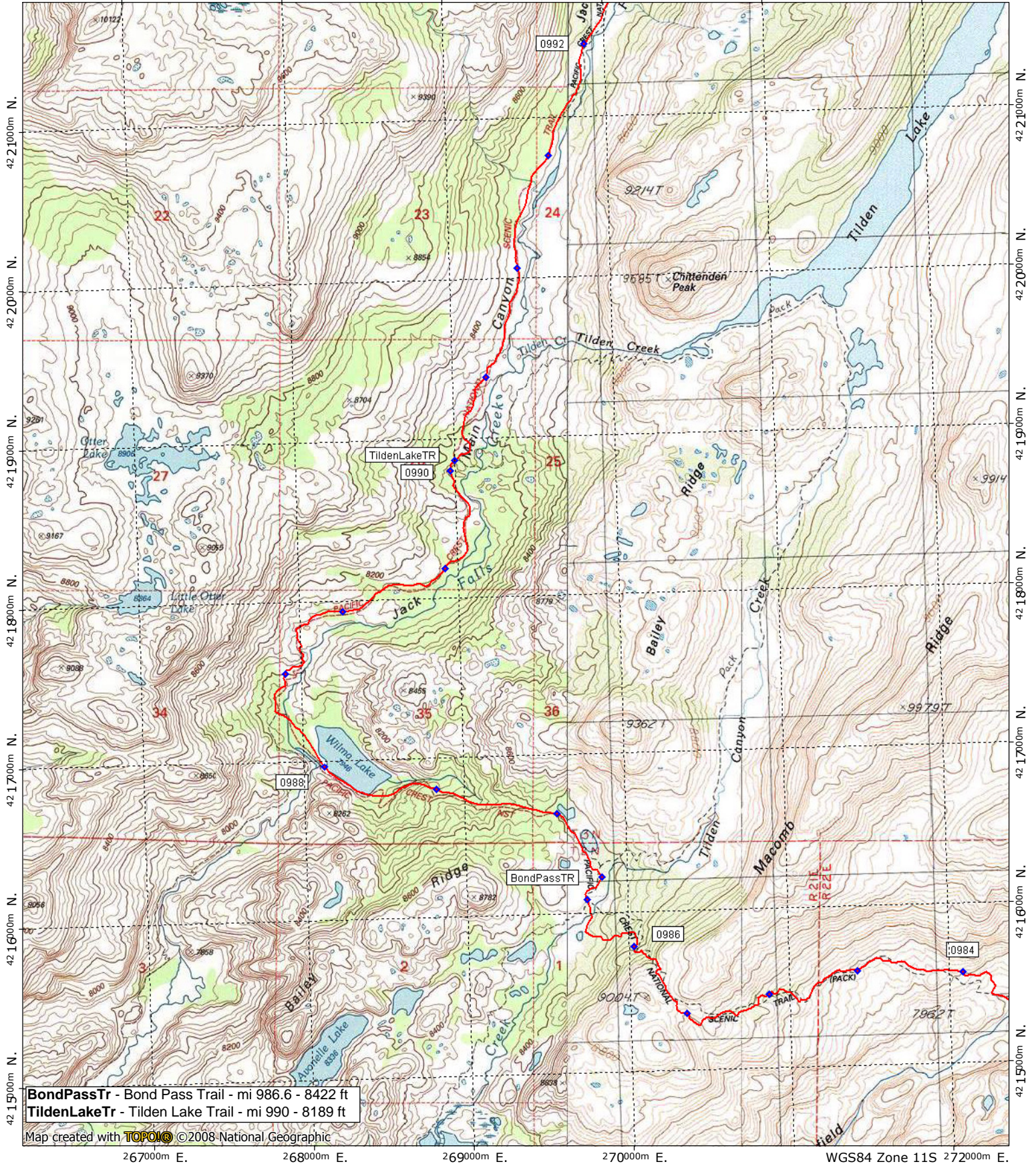
contour interval 40 feet  
1:31,680 1" = 1/2 mile  
Copyright 2011 Halfmile Media  
www.pctmap.net

TN MN  
14°  
11/14/10

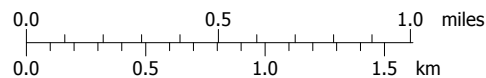


# California Section I - Page 6

267000m E. 268000m E. 269000m E. 270000m E. 271000m E. WGS84 Zone 11S 272000m E.



Support PCTA.org  
Leave No Trace

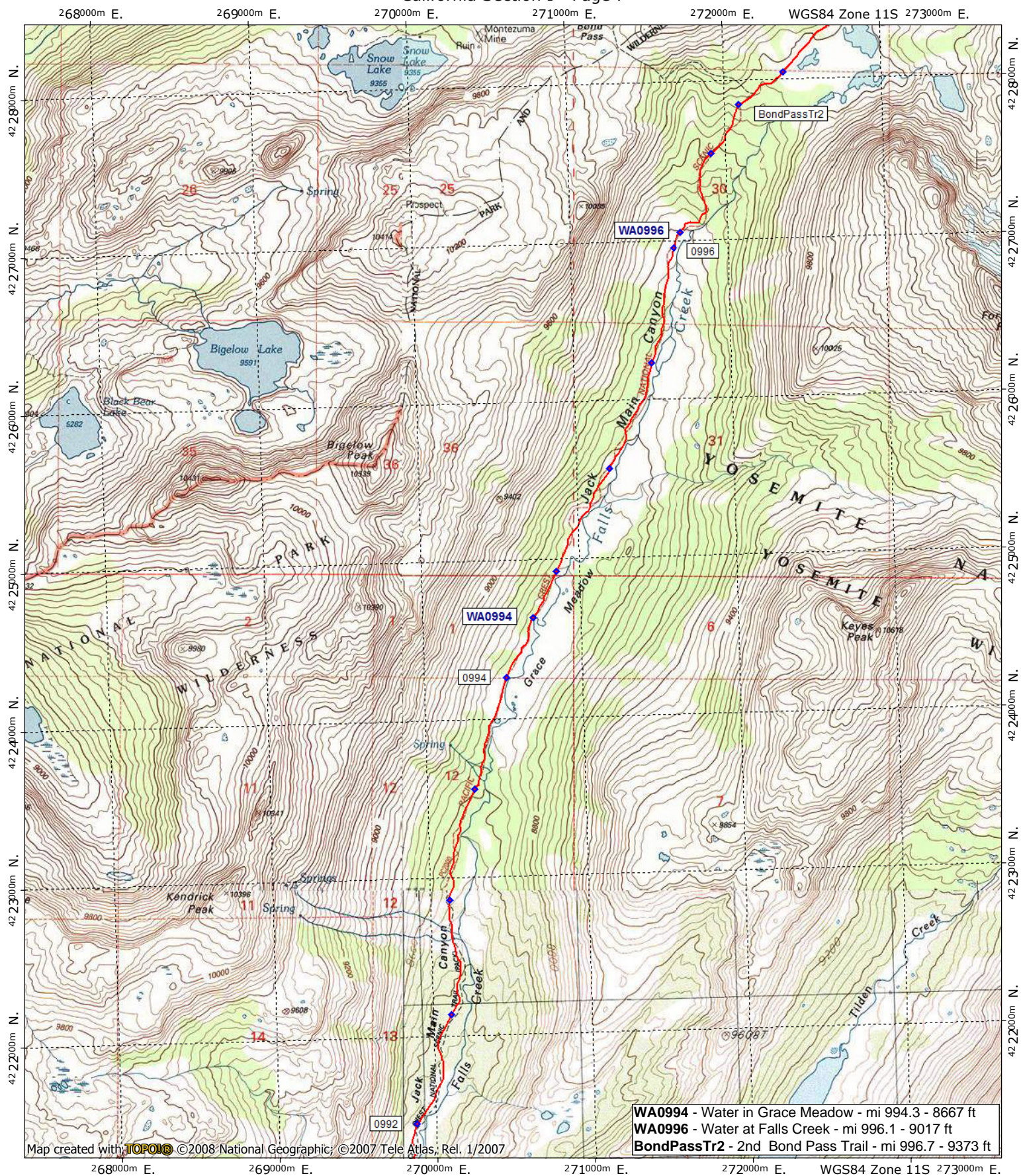


contour interval 40 feet  
 1:31,680 1" = 1/2 mile  
 Copyright 2011 Halfmile Media  
 www.pctmap.net

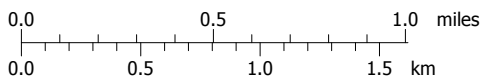
TN MN  
 14°  
 12/11/09



# California Section I - Page 7



Support PCTA.org  
Leave No Trace

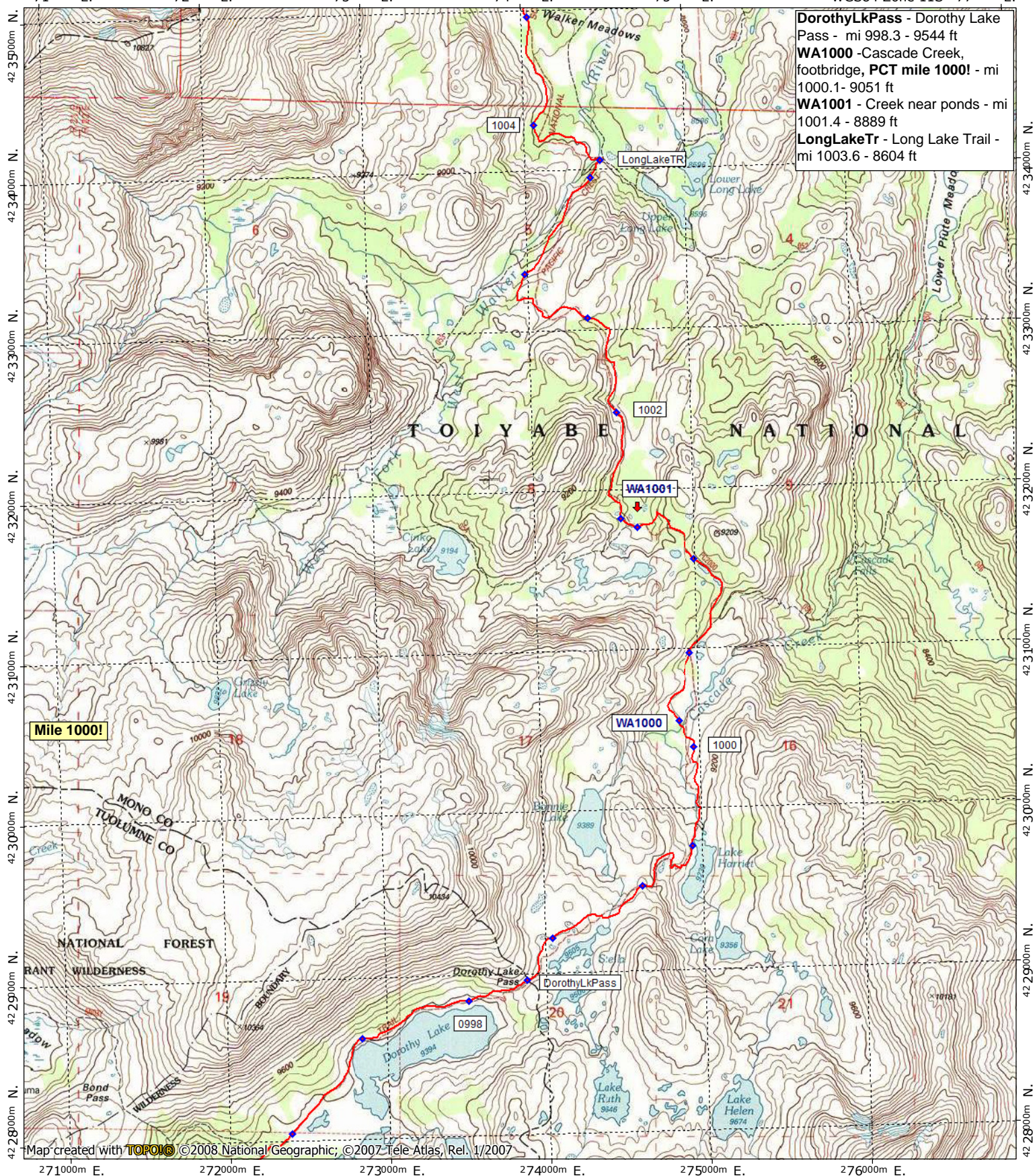


contour interval 40 feet  
 1:31,680 1" = 1/2 mile  
 Copyright 2011 Halfmile Media  
 www.pctmap.net

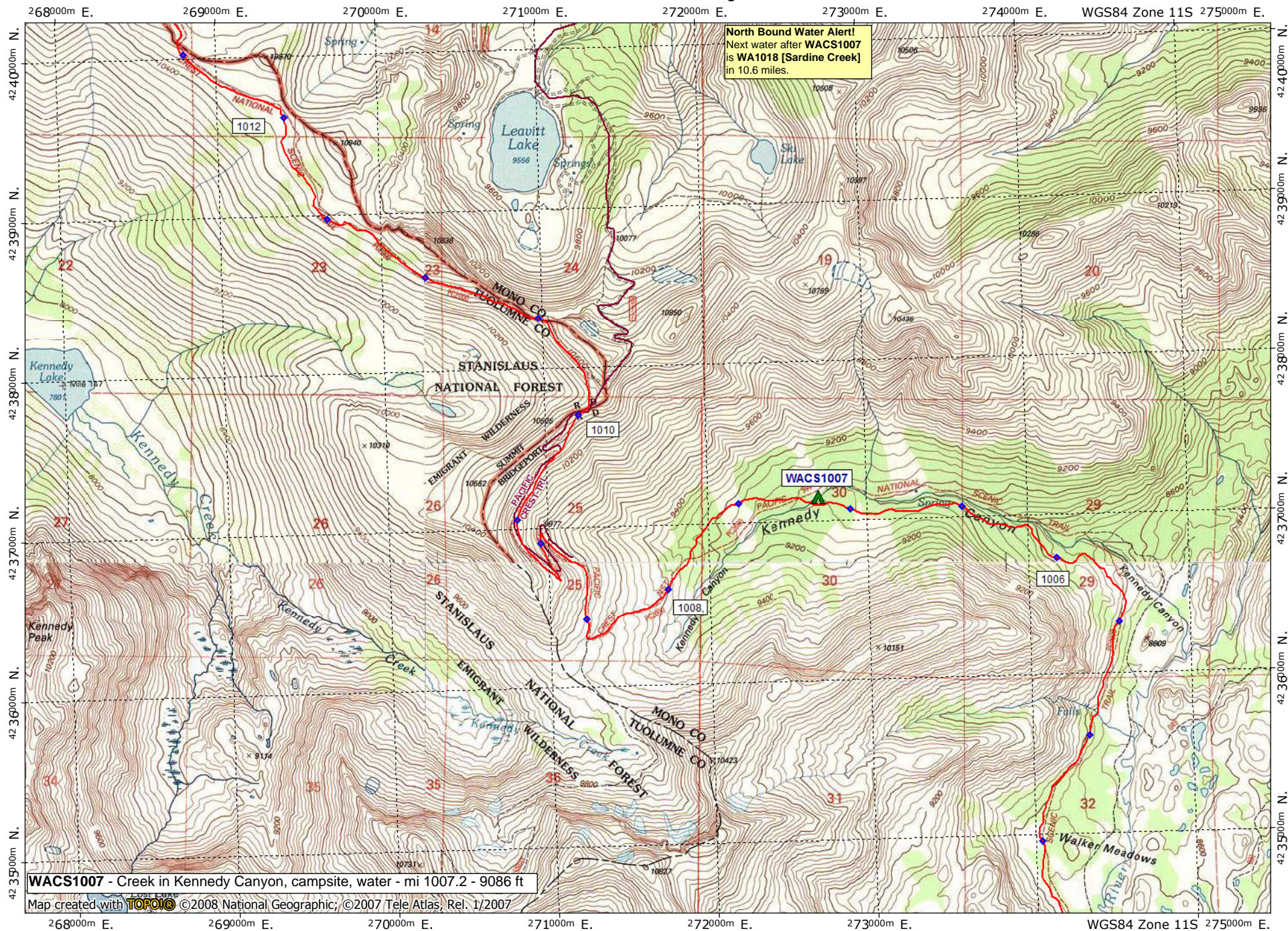
TN\* MN  
 14°  
 11/16/10



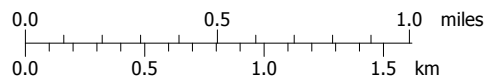
271000m E. 272000m E. 273000m E. 274000m E. 275000m E. WGS84 Zone 11S 277000m E.

Support PCTA.org  
Leave No Trace0.0 0.5 1.0 miles  
0.0 0.5 1.0 1.5 kmcontour interval 40 feet  
1:31,680 1" = 1/2 mile  
Copyright 2011 Halfmile Media  
www.pctmap.netTN\* MN  
14°  
11/11/10





Support PCTA.org  
Leave No Trace



contour interval 40 & 80 feet  
1:31,680 1" = 1/2 mile  
Copyright 2011 Halfmile Media  
www.pctmap.net

TN\* MN  
14°  
11/10/10



# California Section I - Page 10

267000m E. 268000m E. 269000m E. 270000m E. 271000m E. WGS84 Zone 11S 272000m E.

**Northern Kennedy Meadows** is 9.1 miles W on Hwy 108, then 1 mile S on Kennedy Meadows Rd

**WA1018** - Sardine Creek - mi 1017.8 - 9852 ft  
**Hwy108** - Highway 108, Sonora Pass - mi 1018.5 - 9633 ft

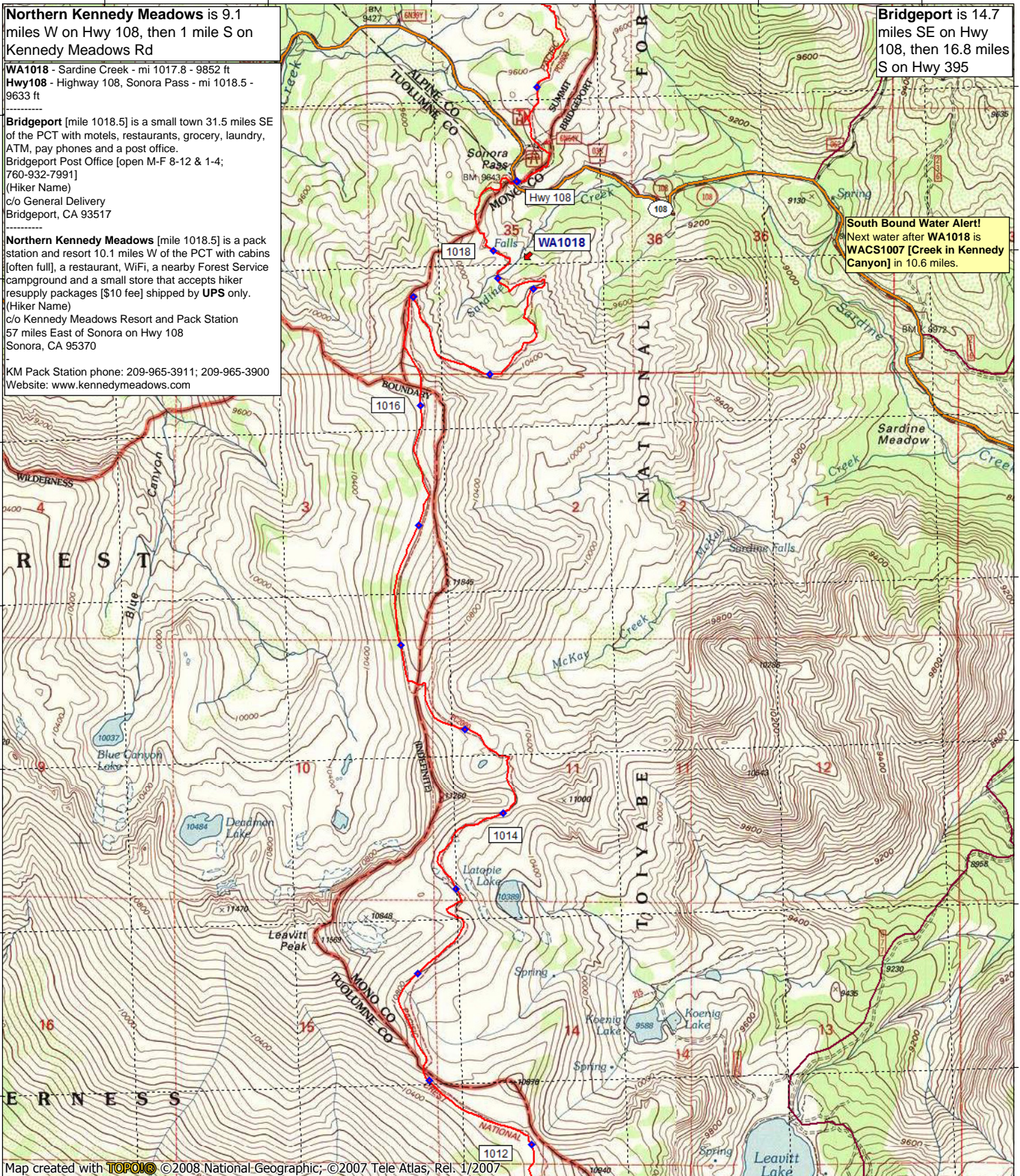
**Bridgeport** [mile 1018.5] is a small town 31.5 miles SE of the PCT with motels, restaurants, grocery, laundry, ATM, pay phones and a post office.  
Bridgeport Post Office [open M-F 8-12 & 1-4; 760-932-7991]  
(Hiker Name)  
c/o General Delivery  
Bridgeport, CA 93517

**Northern Kennedy Meadows** [mile 1018.5] is a pack station and resort 10.1 miles W of the PCT with cabins [often full], a restaurant, WiFi, a nearby Forest Service campground and a small store that accepts hiker resupply packages [\$10 fee] shipped by **UPS** only.  
(Hiker Name)  
c/o Kennedy Meadows Resort and Pack Station  
57 miles East of Sonora on Hwy 108  
Sonora, CA 95370

KM Pack Station phone: 209-965-3911; 209-965-3900  
Website: [www.kennedymeadows.com](http://www.kennedymeadows.com)

**Bridgeport** is 14.7 miles SE on Hwy 108, then 16.8 miles S on Hwy 395

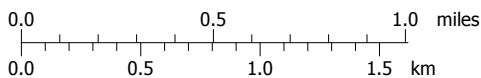
**South Bound Water Alert!**  
Next water after **WA1018** is **WACS1007** [Creek in Kennedy Canyon] in 10.6 miles.



Map created with **TOPOLIC** ©2008 National Geographic; ©2007 Tele Atlas, Rel. 1/2007



Support PCTA.org  
Leave No Trace



contour interval 40 & 80 feet  
1:31,680 1" = 1/2 mile  
Copyright 2011 Halfmile Media  
[www.pctmap.net](http://www.pctmap.net)

TN\* MN  
14°  
11/10/10



